



## Defect Listing

Pipe Segment Refere... <b>E9-3_E9-2</b>	City <b>Oliver Springs</b>	Street <b>Gail Ln</b>	Material <b>PolyVinyl Chloride</b>	Location C... <b>Light High...</b>	Sewer Use <b>Sanitary</b>
Upstream MH <b>E9-3</b>	Total Length <b>247.5</b>	Year Laid	Shape <b>Circular</b>	Location Details <b>Apartment Complex</b>	
DS Manhole <b>E9-2</b>	Length surveyed <b>247.5</b>	Year Renewed	Height <b>8</b>	Width <b>8</b>	Pipe Joint... <b>13</b>

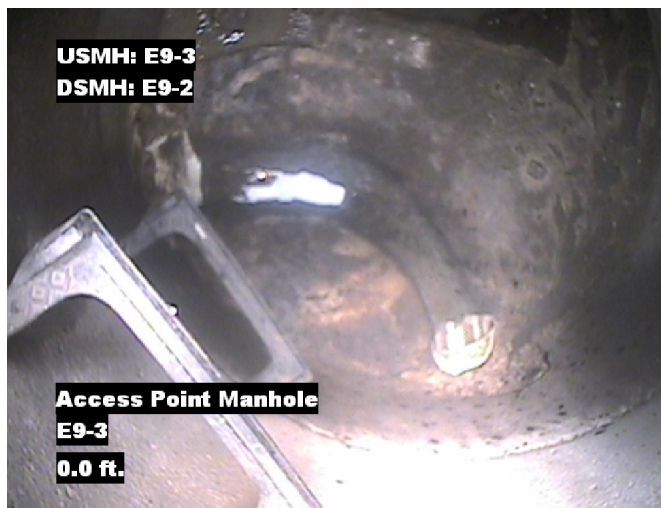
SPR <b>N/A</b>	MPR <b>14</b>	PO Number <b>4397-03</b>	Customer <b>GRW</b>
SPRI <b>N/A</b>	MPRI <b>3.5</b>	Work Order <b>4397-02</b>	Purpose <b>Pre-Rehabilitation Survey</b>
QSR <b>N/A</b>	QMR <b>4321</b>		
OPR <b>14</b>	Surveyed By <b>Barry Rogers</b>	Direction <b>Downstream</b>	Date <b>20150616</b>
OPRI <b>3.5</b>	Certificate Number <b>U-1012-16405</b>	Pre-Cleaning <b>Jetting</b>	Time <b>12:08</b>
	Date Cleaned <b>20150616</b>	End Time <b>12:26</b>	Weather <b>Very Dry</b>
			Media label
			Additional Info

Distance	Condition	Cont. Dfct.	Values			Joint	Clock Position		Grade
			1st	2nd	%		At/From	To	
0.0 ft.	Access Point Manhole				0	<input type="checkbox"/>			
Remarks: E9-3									
0.0 ft.	Water Level				5	<input type="checkbox"/>			
35.0 ft.	Tap Factory Made		6		0	<input type="checkbox"/>	3		
115.7 ft.	Tap Factory Made		6		0	<input checked="" type="checkbox"/>	9		
120.8 ft.	Tap Factory Made		6		0	<input type="checkbox"/>	3		
120.8 ft.	Tap Factory Made Capped		6		0	<input type="checkbox"/>	9		
218.9 ft.	Water Level Sag				15	<input type="checkbox"/>			2
230.6 ft.	Camera Underwater	S01			0	<input type="checkbox"/>			4
245.0 ft.	Water Level				10	<input type="checkbox"/>			
246.6 ft.	Camera Underwater	F01			0	<input type="checkbox"/>			4
247.5 ft.	Access Point Manhole				0	<input type="checkbox"/>			
Remarks: E9-2									

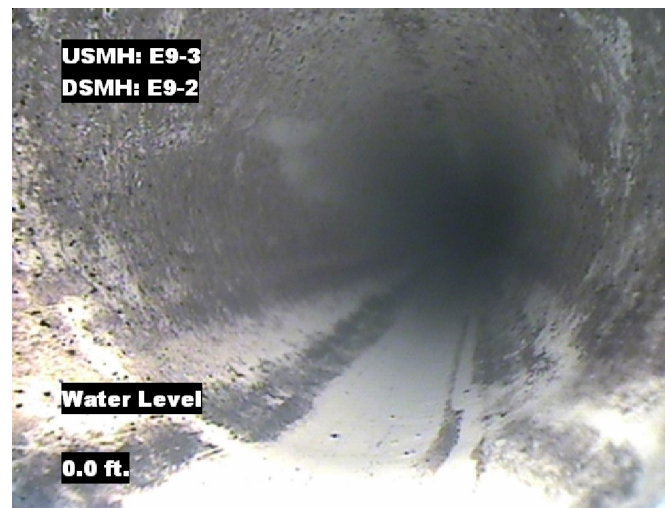


## Image Report 4/Page

Pipe Segment Refere... <b>E9-3_E9-2</b>	<b>City</b> <b>Oliver Springs</b>	<b>Street</b> <b>Gail Ln</b>	<b>Material</b> <b>PolyVinyl Chloride</b>		<b>Location C...</b> <b>Light High...</b>	<b>Sewer Use</b> <b>Sanitary</b>
<b>Upstream MH</b> <b>E9-3</b>	Total Length <b>247.5</b>	Year Laid	<b>Shape</b> <b>Circular</b>		Location Details <b>Apartment Complex</b>	
<b>DS Manhole</b> <b>E9-2</b>	<b>Length surveyed</b> <b>247.5</b>	Year Renewed	<b>Height</b> <b>8</b>	Width <b>8</b>	Pipe Joint... <b>13</b>	



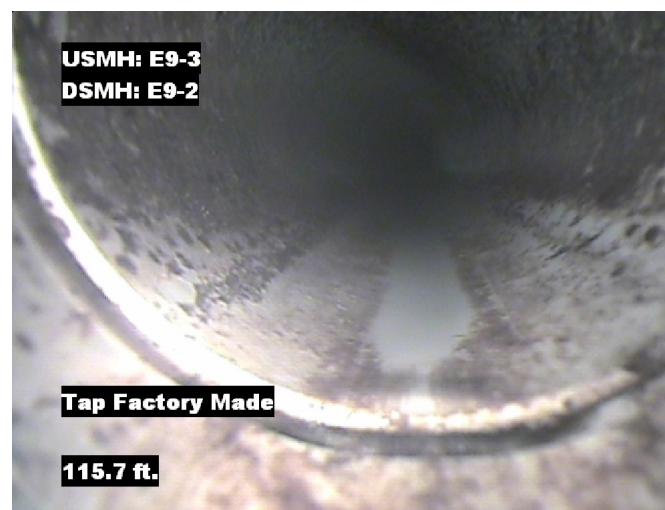
Distance: 0.0 ft. Grade: 0  
Condition: Access Point Manhole  
Remarks: E9-3



Distance: 0.0 ft. Grade: 0  
Condition: Water Level  
Remarks: N/A



Distance: 35.0 ft. Grade: 0  
Condition: Tap Factory Made  
Remarks: N/A

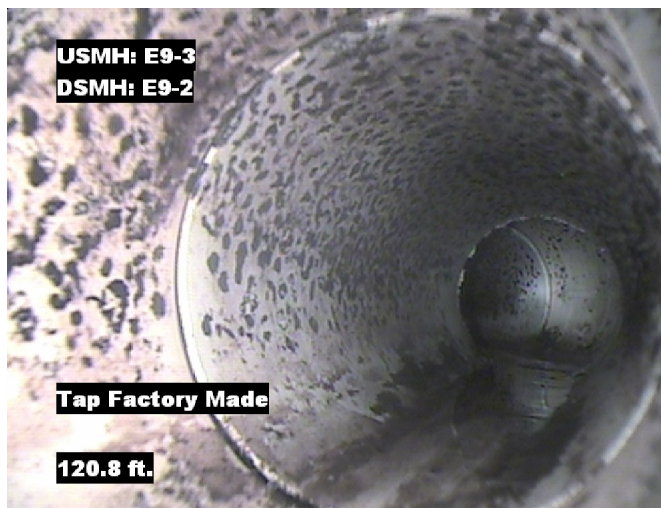


Distance: 115.7 ft. Grade: 0  
Condition: Tap Factory Made  
Remarks: N/A

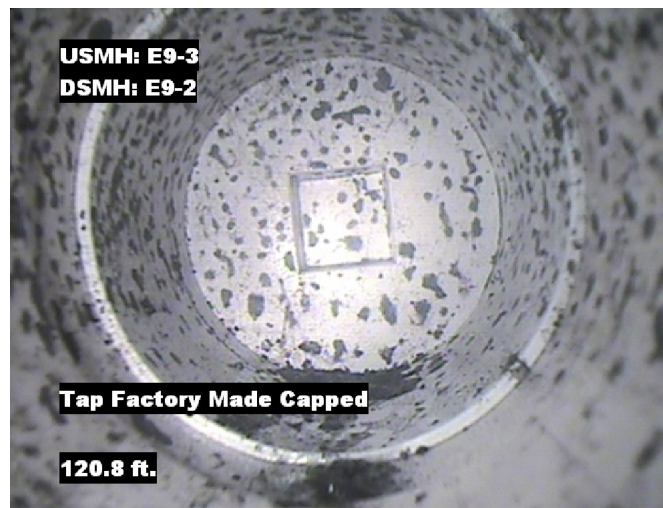


## Image Report 4/Page

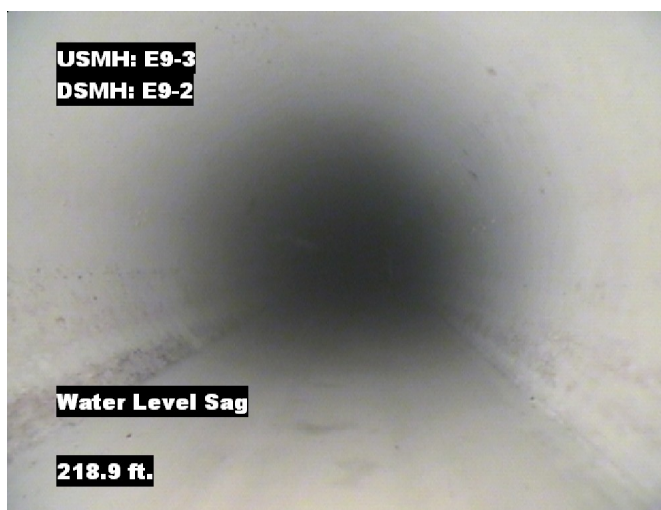
Pipe Segment Refere... <b>E9-3_E9-2</b>	<b>City</b> <b>Oliver Springs</b>	<b>Street</b> <b>Gail Ln</b>	<b>Material</b> <b>PolyVinyl Chloride</b>		<b>Location C...</b> <b>Light High...</b>	<b>Sewer Use</b> <b>Sanitary</b>
<b>Upstream MH</b> <b>E9-3</b>	Total Length <b>247.5</b>	Year Laid	<b>Shape</b> <b>Circular</b>		Location Details <b>Apartment Complex</b>	
<b>DS Manhole</b> <b>E9-2</b>	<b>Length surveyed</b> <b>247.5</b>	Year Renewed	<b>Height</b> <b>8</b>	Width <b>8</b>	Pipe Joint... <b>13</b>	



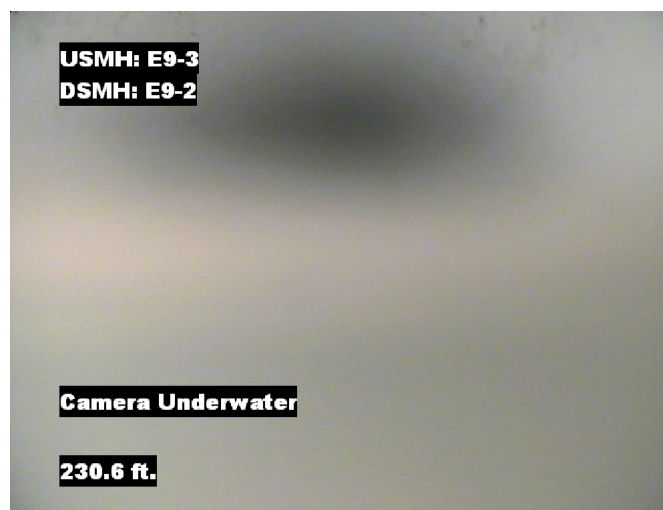
Distance: 120.8 ft. Grade: 0  
Condition: Tap Factory Made  
Remarks: N/A



Distance: 120.8 ft. Grade: 0  
Condition: Tap Factory Made Capped  
Remarks: N/A



Distance: 218.9 ft. Grade: 2  
Condition: Water Level Sag  
Remarks: N/A



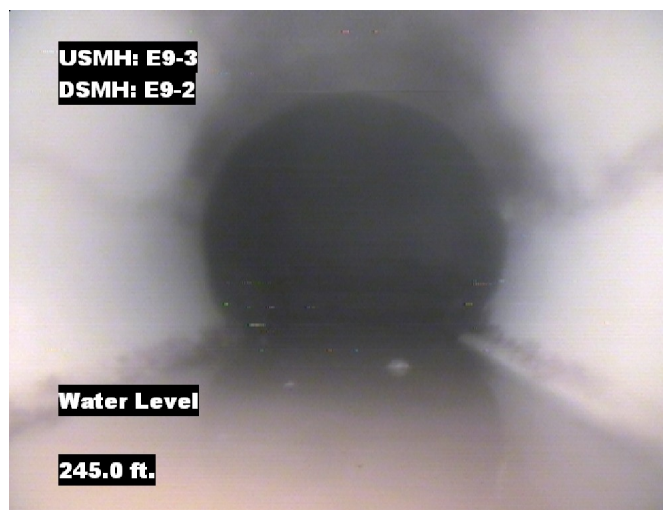
Distance: 230.6 ft. Grade: 4  
Condition: Camera Underwater  
Remarks: N/A



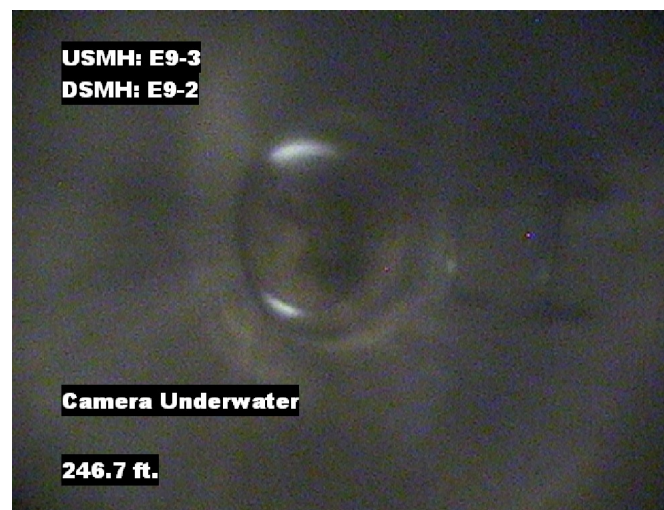


## Image Report 4/Page

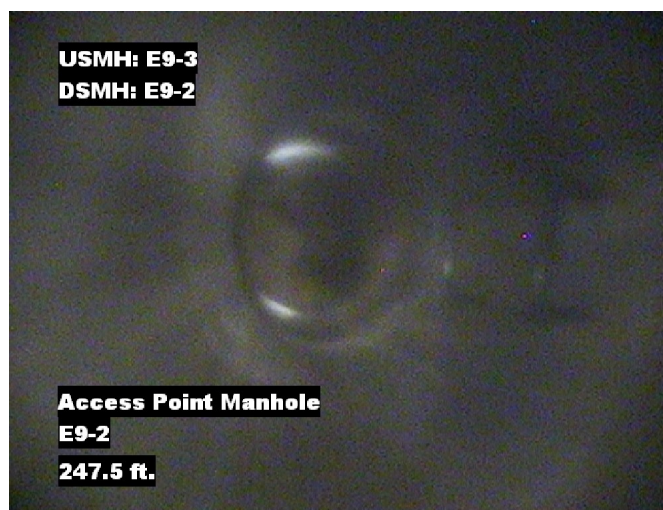
Pipe Segment Refere...	City	Street	Material	Location C...	Sewer Use
E9-3_E9-2	Oliver Springs	Gail Ln	PolyVinyl Chloride	Light High...	Sanitary
Upstream MH	Total Length	Year Laid	Shape	Location Details	
E9-3	247.5		Circular	Apartment Complex	
DS Manhole	Length surveyed	Year Renewed	Height	Width	Pipe Joint...
E9-2	247.5		8	8	13



Distance: 245.0 ft. Grade: 0  
Condition: Water Level  
Remarks: N/A



Distance: 246.6 ft. Grade: 4  
Condition: Camera Underwater  
Remarks: N/A



Distance: 247.5 ft. Grade: 0  
Condition: Access Point Manhole  
Remarks: E9-2



## PACP Conditions

Pipe Segment Refere... <b>E9-3_E9-2</b>	City <b>Oliver Springs</b>	Street <b>Gail Ln</b>	Material <b>PolyVinyl Chloride</b>	Location C... <b>Light High...</b>	Sewer Use <b>Sanitary</b>
Upstream MH <b>E9-3</b>	Total Length <b>247.5</b>	Year Laid	Shape <b>Circular</b>	Location Details <b>Apartment Complex</b>	
DS Manhole <b>E9-2</b>	Length surveyed <b>247.5</b>	Year Renewed	Height <b>8</b>	Width <b>8</b>	Pipe Joint... <b>13</b>
SPR <b>N/A</b>	MPR <b>14</b>	PO Number <b>4397-03</b>		Customer <b>GRW</b>	
SPRI <b>N/A</b>	MPRI <b>3.5</b>	Work Order <b>4397-02</b>		Purpose <b>Pre-Rehabilitation Survey</b>	
QSR <b>N/A</b>	QMR <b>4321</b>				
OPR <b>14</b>	Surveyed By <b>Barry Rogers</b>	Direction <b>Downstream</b>	Date <b>20150616</b>	Media label	
OPRI <b>3.5</b>	Certificate Number <b>U-1012-16405</b>	Pre-Cleaning <b>Jetting</b>	Time <b>12:08</b>	Weather <b>Very Dry</b>	
Date Cleaned <b>20150616</b>			End Time <b>12:26</b>	Additional Info	

Normal Defects			Structural Ratings			O & M Ratings			Combined Ratings		
			Grade Rating	No. Occur.	Rating	Grade Rating	No. Occur.	Rating	Grade Rating	No. Occur.	Rating
Continuous Defects			1	0	0	1	0	0	1	0	0
			2	0	0	2	1	2	2	1	2
			3	0	0	3	0	0	3	0	0
			4	0	0	4	0	0	4	0	0
			5	0	0	5	0	0	5	0	0
Code	ID	Length	0	0	0	4	3	12	4	3	12
MCU	F01	16.0									
									</		