



## Defect Listing

Pipe Segment Refere... <b>E9-1_E6-3</b>	City <b>Oliver Springs</b>	Street <b>Gail Ln</b>	Material <b>PolyVinyl Chloride</b>	Location C... <b>Light High...</b>	Sewer Use <b>Sanitary</b>
Upstream MH <b>E9-1</b>	Total Length <b>299.8</b>	Year Laid	Shape <b>Circular</b>	Location Details <b>Street</b>	
DS Manhole <b>E6-3</b>	Length surveyed <b>299.8</b>	Year Renewed	Height <b>8</b>	Width <b>8</b>	Pipe Joint... <b>13</b>

SPR <b>3</b>	MPR <b>4</b>	PO Number <b>4397-03</b>	Customer <b>GRW</b>
SPRI <b>3</b>	MPRI <b>2</b>	Work Order <b>4397-02</b>	Purpose <b>Pre-Rehabilitation Survey</b>
QSR <b>3100</b>	QMR <b>2200</b>		
OPR <b>7</b>	Surveyed By <b>Barry Rogers</b>	Direction <b>Downstream</b>	Date <b>20150616</b>
OPRI <b>2.3</b>	Certificate Number <b>U-1012-16405</b>	Pre-Cleaning <b>No Pre-Cleaning</b>	Time <b>14:26</b>
	Date Cleaned	End Time <b>14:45</b>	Weather <b>Very Dry</b>
			Media label
			Additional Info

Distance	Condition	Cont. Dfct.	Values			Joint	Clock Position		Grade
			1st	2nd	%		At/From	To	
0.0 ft.	Access Point Manhole				0	<input type="checkbox"/>			
<b>Remarks:</b> E9-1									
0.0 ft.	Water Level				5	<input type="checkbox"/>			
101.5 ft.	Water Level Sag	S01			15	<input type="checkbox"/>			2
105.8 ft.	Water Level Sag	F01			15	<input type="checkbox"/>			2
264.2 ft.	Hole		3	3	0	<input type="checkbox"/>	12		3
296.3 ft.	Water Level Sag				20	<input type="checkbox"/>			2
299.8 ft.	Survey Abandoned				0	<input type="checkbox"/>			
<b>Remarks:</b> Unable to Proceed Because of Debris. Unable to clean because of Down Stream MH access point									

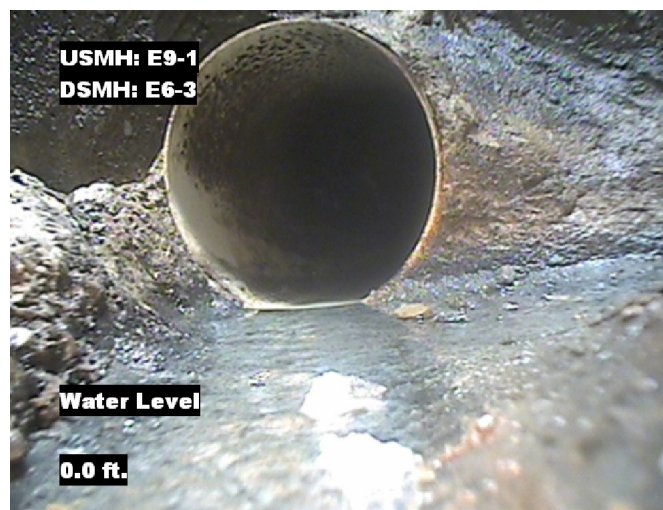


## Image Report 4/Page

Pipe Segment Refere... <b>E9-1_E6-3</b>	City <b>Oliver Springs</b>	Street <b>Gail Ln</b>	Material <b>PolyVinyl Chloride</b>		Location C... <b>Light High...</b>	Sewer Use <b>Sanitary</b>
Upstream MH <b>E9-1</b>	Total Length <b>299.8</b>	Year Laid	Shape <b>Circular</b>		Location Details <b>Street</b>	
DS Manhole <b>E6-3</b>	Length surveyed <b>299.8</b>	Year Renewed	Height <b>8</b>	Width <b>8</b>	Pipe Joint... <b>13</b>	



Distance: 0.0 ft. Grade: 0  
Condition: Access Point Manhole  
Remarks: E9-1



Distance: 0.0 ft. Grade: 0  
Condition: Water Level  
Remarks: N/A



Distance: 101.5 ft. Grade: 2  
Condition: Water Level Sag  
Remarks: N/A

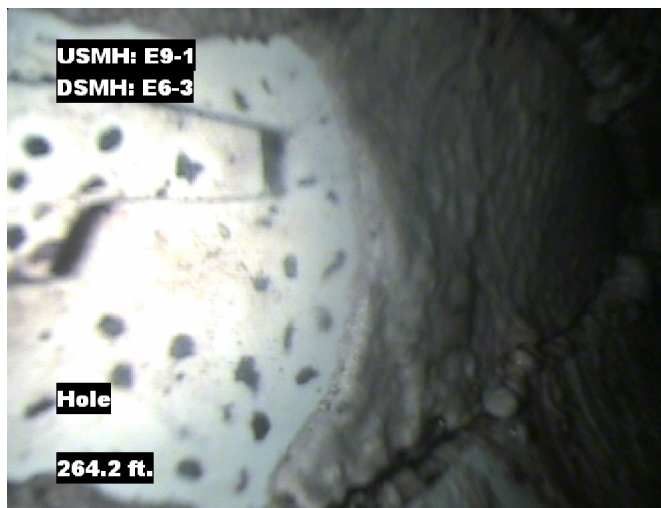


Distance: 105.8 ft. Grade: 2  
Condition: Water Level Sag  
Remarks: N/A



## Image Report 4/Page

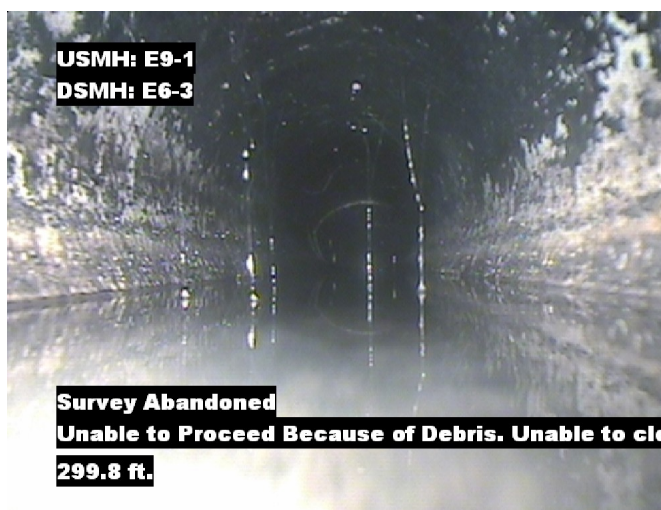
Pipe Segment Refere...	City	Street	Material	Location C...	Sewer Use
E9-1_E6-3	Oliver Springs	Gail Ln	PolyVinyl Chloride	Light High...	Sanitary
Upstream MH	Total Length	Year Laid	Shape	Location Details	
E9-1	299.8		Circular	Street	
DS Manhole	Length surveyed	Year Renewed	Height	Width	Pipe Joint...
E6-3	299.8		8	8	13



Distance: 264.2 ft. Grade: 3  
Condition: Hole  
Remarks: N/A



Distance: 296.3 ft. Grade: 2  
Condition: Water Level Sag  
Remarks: N/A



Distance: 299.8 ft. Grade: 0  
Condition: Survey Abandoned  
Remarks: Unable to Proceed Because of Debris.  
Unable to clean because of Down Stream



## PACP Conditions

Pipe Segment Refere... E9-1_E6-3	City Oliver Springs	Street Gail Ln	Material PolyVinyl Chloride		Location C... Light High...	Sewer Use Sanitary
Upstream MH E9-1	Total Length 299.8	Year Laid	Shape Circular		Location Details Street	
DS Manhole E6-3	Length surveyed 299.8	Year Renewed	Height 8	Width 8	Pipe Joint...	
SPR 3	MPR 4	PO Number 4397-03		Customer GRW		
SPRI 3	MPRI 2	Work Order		Purpose		
QSR 3100	QMR 2200	4397-02		Pre-Rehabilitation Survey		
OPR 7	Surveyed By Barry_Rogers	Direction Downstream	Date 20150616		Media label	
OPRI 2.3	Certificate Number U-1012-16405	Pre-Cleaning No Pre-Cleaning	Time 14:26		Weather Very Dry	
Date Cleaned			End Time 14:45		Additional Info	

Normal Defects			Structural Ratings			O & M Ratings			Combined Ratings		
			Grade Rating	No. Occur.	Rating	Grade Rating	No. Occur.	Rating	Grade Rating	No. Occur.	Rating
Continuous Defects			1	0	0	1	0	0	1	0	0
			2	0	0	2	1	2	2	1	2
			3	1	3	3	0	0	3	1	3
			4	0	0	4	0	0	4	0	0
			5	0	0	5	0	0	5	0	0
Code	ID	Length	0	0	0	2	1	2	2	1	2
MWLS	F01	4.3									
			Subtotals	1		Subtotals	2		Subtotals	3	
SUMMARY			Pipe Rating	3		Pipe Rating	4		Overall Pipe Rating	7	
			Structural Index	3.0		O&M Index	2.0		Overall Index	2.3	
			Str. Quick Rating	3100		O&M Quick Rating	2200		Ovrl. Quick Rating	3122	