



## Defect Listing

Pipe Segment Refere... <b>E7-6_E6-5</b>	City <b>Oliver Springs</b>	Street <b>Parking Lot</b>	Material <b>PolyVinyl Chloride</b>	Location C... <b>Parking Lo...</b>	Sewer Use <b>Sanitary</b>
Upstream MH <b>E7-6</b>	Total Length <b>311.1</b>	Year Laid	Shape <b>Circular</b>	Location Details <b>Off Hwy 61</b>	
DS Manhole <b>E6-5</b>	Length surveyed <b>311.1</b>	Year Renewed	Height <b>8</b>	Width <b>8</b>	Pipe Joint... <b>13</b>

SPR <b>3</b>	MPR <b>10</b>	PO Number <b>4397-03</b>	Customer <b>GRW</b>
SPRI <b>3</b>	MPRI <b>2.5</b>	Work Order <b>4397-02</b>	Purpose <b>Pre-Rehabilitation Survey</b>
QSR <b>3100</b>	QMR <b>4123</b>		
OPR <b>13</b>	Surveyed By <b>Barry Rogers</b>	Direction <b>Downstream</b>	Date <b>20150615</b>
OPRI <b>2.6</b>	Certificate Number <b>U-1012-16405</b>	Pre-Cleaning <b>No Pre-Cleaning</b>	Time <b>14:12</b>
	Date Cleaned	End Time <b>14:37</b>	Weather <b>Very Dry</b>
			Media label
			Additional Info

Distance	Condition	Cont. Dfct.	Values			Joint	Clock Position		Grade
			1st	2nd	%		At/From	To	
0.0 ft.	Access Point Manhole				0	<input type="checkbox"/>			
Remarks: E7-6									
0.0 ft.	Water Level				5	<input type="checkbox"/>			
118.6 ft.	Intruding Sealing Other				10	<input type="checkbox"/>	6	6	2
260.3 ft.	Hole				0	<input type="checkbox"/>	9		3
269.3 ft.	Water Level Sag				20	<input type="checkbox"/>			2
300.9 ft.	Water Level Sag				15	<input type="checkbox"/>			2
303.1 ft.	Camera Underwater				0	<input type="checkbox"/>			4
311.1 ft.	Access Point Manhole				0	<input type="checkbox"/>			
Remarks: E6-5									



## Image Report 4/Page

Pipe Segment Refere...	City	Street	Material	Location C...	Sewer Use
E7-6_E6-5	Oliver Springs	Parking Lot	PolyVinyl Chloride	Parking Lo...	Sanitary
Upstream MH	Total Length	Year Laid	Shape	Location Details	
E7-6	311.1		Circular	Off Hwy 61	
DS Manhole	Length surveyed	Year Renewed	Height	Width	Pipe Joint...
E6-5	311.1		8	8	13



Distance: 0.0 ft. Grade: 0  
Condition: Access Point Manhole  
Remarks: E7-6



Distance: 0.0 ft. Grade: 0  
Condition: Water Level  
Remarks: N/A



Distance: 118.6 ft. Grade: 2  
Condition: Intruding Sealing Other  
Remarks: N/A

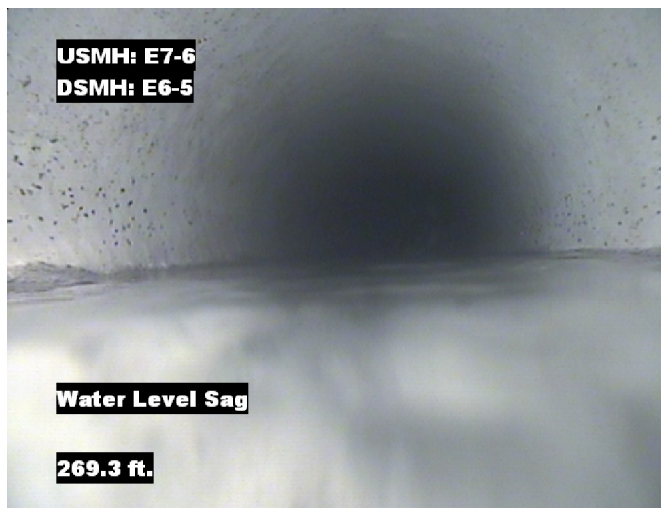


Distance: 260.3 ft. Grade: 3  
Condition: Hole  
Remarks: N/A



## Image Report 4/Page

Pipe Segment Refere...	City	Street	Material	Location C...	Sewer Use
E7-6_E6-5	Oliver Springs	Parking Lot	PolyVinyl Chloride	Parking Lo...	Sanitary
Upstream MH	Total Length	Year Laid	Shape	Location Details	
E7-6	311.1		Circular	Off Hwy 61	
DS Manhole	Length surveyed	Year Renewed	Height	Width	Pipe Joint...
E6-5	311.1		8	8	13



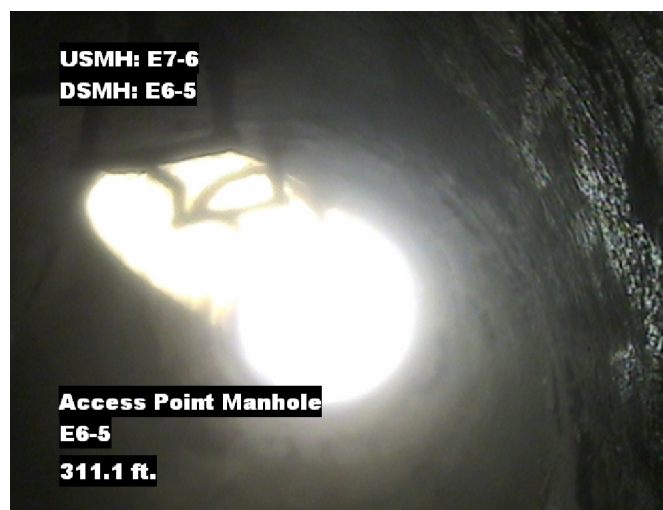
Distance: 269.3 ft. Grade: 2  
Condition: Water Level Sag  
Remarks: N/A



Distance: 300.9 ft. Grade: 2  
Condition: Water Level Sag  
Remarks: N/A



Distance: 303.1 ft. Grade: 4  
Condition: Camera Underwater  
Remarks: N/A



Distance: 311.1 ft. Grade: 0  
Condition: Access Point Manhole  
Remarks: E6-5



Pipe Segment Refere... E7-6_E6-5	City Oliver Springs	Street Parking Lot	Material PolyVinyl Chloride		Location C... Parking Lo...	Sewer Use Sanitary
Upstream MH E7-6	Total Length 311.1	Year Laid	Shape Circular		Location Details Off Hwy 61	
DS Manhole E6-5	Length surveyed 311.1	Year Renewed	Height 8	Width 8	Pipe Joint... 13	
SPR 3	MPR 10	PO Number 4397-03		Customer GRW		
SPRI 3	MPRI 2.5	Work Order 4397-02		Purpose Pre-Rehabilitation Survey		
QSR 3100	QMR 4123					
OPR 13	Surveyed By Barry_Rogers	Direction Downstream	Date 20150615		Media label	
OPRI 2.6	Certificate Number U-1012-16405	Pre-Cleaning No Pre-Cleaning	Time 14:12		Weather Very Dry	
Date Cleaned			End Time 14:37		Additional Info	

[illegible]