



## Defect Listing

Pipe Segment Refere... <b>E7-5_E7-6</b>	City <b>Oliver Springs</b>	Street <b>Parking Lot</b>	Material <b>PolyVinyl Chloride</b>	Location C... <b>Parking Lo...</b>	Sewer Use <b>Sanitary</b>
Upstream MH <b>E7-5</b>	Total Length <b>152.4</b>	Year Laid	Shape <b>Circular</b>	Location Details <b>Off Highway 61</b>	
DS Manhole <b>E7-6</b>	Length surveyed <b>152.4</b>	Year Renewed	Height <b>8</b>	Width <b>8</b>	Pipe Joint... <b>13</b>

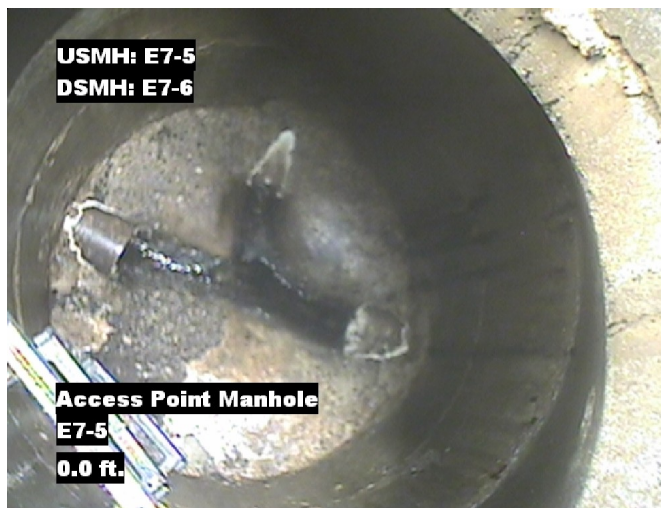
SPR <b>N/A</b>	MPR <b>N/A</b>	PO Number <b>4397-03</b>		Customer <b>GRW</b>	
SPRI <b>N/A</b>	MPRI <b>N/A</b>	Work Order <b>4397-02</b>		Purpose <b>Pre-Rehabilitation Survey</b>	
QSR <b>N/A</b>	QMR <b>N/A</b>				
OPR <b>N/A</b>	Surveyed By <b>Barry Rogers</b>	Direction <b>Downstream</b>	Date <b>20150615</b>	Media label	
OPRI <b>N/A</b>	Certificate Number <b>U-1012-16405</b>	Pre-Cleaning <b>Jetting</b>	Time <b>13:24</b>	Weather <b>Very Dry</b>	
Date Cleaned <b>20150615</b>			End Time <b>13:34</b>	Additional Info	

Distance	Condition	Cont. Dfct.	Values			Joint	Clock Position		Grade
			1st	2nd	%		At/From	To	
0.0 ft.	Access Point Manhole				0	<input type="checkbox"/>			
Remarks: E7-5									
0.0 ft.	Water Level				5	<input type="checkbox"/>			
151.2 ft.	Water Level				5	<input type="checkbox"/>			
152.4 ft.	Access Point Manhole				0	<input type="checkbox"/>			
Remarks: E7-6									



## Image Report 4/Page

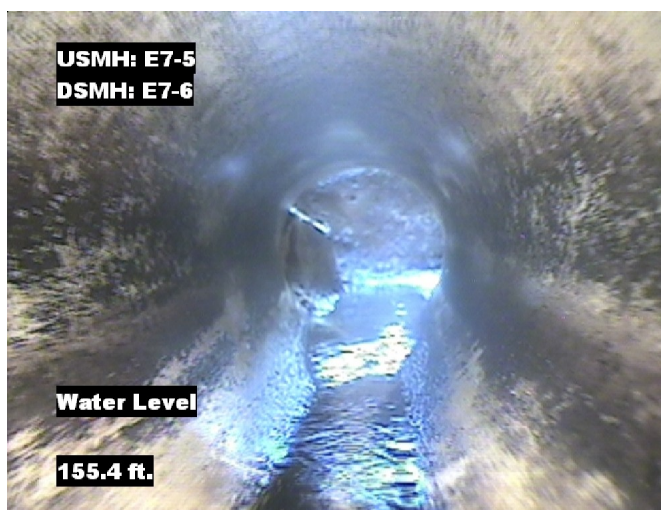
Pipe Segment Refere... <b>E7-5_E7-6</b>	City <b>Oliver Springs</b>	Street <b>Parking Lot</b>	Material <b>PolyVinyl Chloride</b>		Location C... <b>Parking Lo...</b>	Sewer Use <b>Sanitary</b>
Upstream MH <b>E7-5</b>	Total Length <b>152.4</b>	Year Laid	Shape <b>Circular</b>		Location Details <b>Off Highway 61</b>	
DS Manhole <b>E7-6</b>	Length surveyed <b>152.4</b>	Year Renewed	Height <b>8</b>	Width <b>8</b>	Pipe Joint...	
					<b>13</b>	



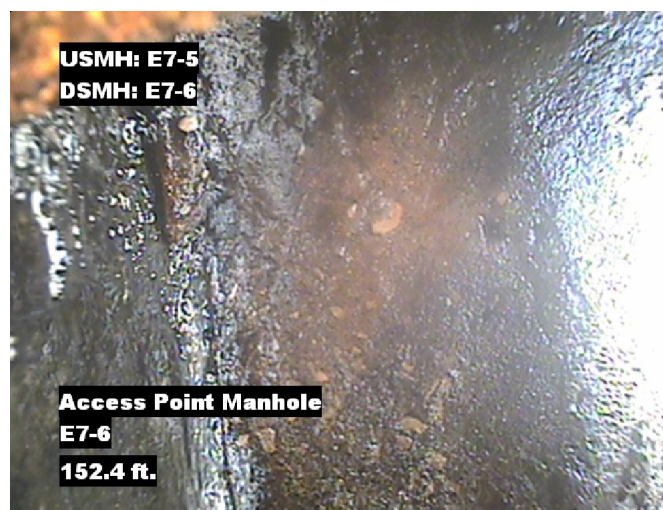
Distance: 0.0 ft. Grade: 0  
Condition: Access Point Manhole  
Remarks: E7-5



Distance: 0.0 ft. Grade: 0  
Condition: Water Level  
Remarks: N/A



Distance: 151.2 ft. Grade: 0  
Condition: Water Level  
Remarks: N/A



Distance: 152.4 ft. Grade: 0  
Condition: Access Point Manhole  
Remarks: E7-6



Pipe Segment Refere... E7-5_E7-6	City Oliver Springs	Street Parking Lot	Material PolyVinyl Chloride		Location C... Parking Lo...	Sewer Use Sanitary
Upstream MH E7-5	Total Length 152.4	Year Laid	Shape Circular		Location Details Off Highway 61	
DS Manhole E7-6	Length surveyed 152.4	Year Renewed	Height 8	Width 8	Pipe Joint...	
SPR N/A	MPR N/A	PO Number 4397-03			Customer GRW	
SPRI N/A	MPRI N/A	Work Order 4397-02			Purpose	
QSR N/A	QMR N/A				Pre-Rehabilitation Survey	
OPR N/A	Surveyed By Barry_Rogers	Direction Downstream	Date 20150615		Media label	
OPRI N/A	Certificate Number U-1012-16405	Pre-Cleaning Jetting	Time 13:24		Weather Very Dry	
Date Cleaned 20150615			End Time 13:34		Additional Info	

			Structural Ratings			O & M Ratings			Combined Ratings																				
			Grade Rating	No. Occur.	Rating	Grade Rating	No. Occur.	Rating	Grade Rating	No. Occur.	Rating																		
Normal Defects																													
<div>Continuous Defects</div> <table><tr><th>Code</th><th>ID</th><th>Length</th></tr><tr><td></td><td></td><td></td></tr><tr><td colspan="3"></td></tr><tr><td colspan="3"></td></tr><tr><td colspan="3"></td></tr><tr><td colspan="3"></td></tr></table>			Code	ID	Length																1	0	0	1	0	0	1	0	0
			Code	ID	Length																								
2	0	0	2	0	0	2	0	0	0																				
3	0	0	3	0	0	3	0	0	0																				
4	0	0	4	0	0	4	0	0	0																				
5	0	0	5	0	0	5	0	0	0																				
Subtotals			0			Subtotals	0		Subtotals	0																			
SUMMARY			Pipe Rating	0		Pipe Rating	0		Overall Pipe Rating	0																			
			Structural Index	0		O&M Index	0		Overall Index	0																			
			Str. Quick Rating	0000		O&M Quick Rating	0000		Ovrl. Quick Rating	0000																			