



Defect Listing

| | | | | | |
|--|--------------------------------|------------------------------|---------------------------------------|---------------------------------------|------------------------------|
| Pipe Segment Refere... E6-7_E6-6 | City Oliver Springs | Street Parking Lot | Material PolyVinyl Chloride | Location C... Parking Lo... | Sewer Use Sanitary |
| Upstream MH E6-7 | Total Length 99.9 | Year Laid | Shape Circular | Location Details Of HWy 62 | |
| DS Manhole E6-6 | Length surveyed 99.9 | Year Renewed | Height 8 | Width 8 | Pipe Joint... 13 |

| | | | | | |
|---------------------------------|---|--------------------------------|--------------------------|---|--|
| SPR N/A | MPR N/A | PO Number 4397-03 | | Customer GRW | |
| SPRI N/A | MPRI N/A | Work Order 4397-02 | | Purpose Pre-Rehabilitation Survey | |
| QSR N/A | QMR N/A | | | | |
| OPR N/A | Surveyed By Barry Rogers | Direction Downstream | Date 20150615 | Media label | |
| OPRI N/A | Certificate Number U-1012-16405 | Pre-Cleaning Jetting | Time 10:27 | Weather Very Dry | |
| Date Cleaned 20150615 | | | End Time 10:32 | Additional Info | |

| Distance | Condition | Cont. Dfct. | Values | | | Joint | Clock Position | | Grade |
|-------------------|-------------------------|-------------|--------|-----|---|-------------------------------------|----------------|----|-------|
| | | | 1st | 2nd | % | | At/From | To | |
| 0.0 ft. | Access Point Manhole | | | | 0 | <input type="checkbox"/> | | | |
| Remarks: E6-7 | | | | | | | | | |
| 0.0 ft. | Water Level | | | | 5 | <input type="checkbox"/> | | | |
| 10.3 ft. | Tap Factory Made Active | | 8 | | 0 | <input checked="" type="checkbox"/> | 12 | | |
| Remarks: Car Wash | | | | | | | | | |
| 97.2 ft. | Water Level | | | | 5 | <input type="checkbox"/> | | | |
| 99.9 ft. | Access Point Manhole | | | | 0 | <input type="checkbox"/> | | | |
| Remarks: E6-6 | | | | | | | | | |

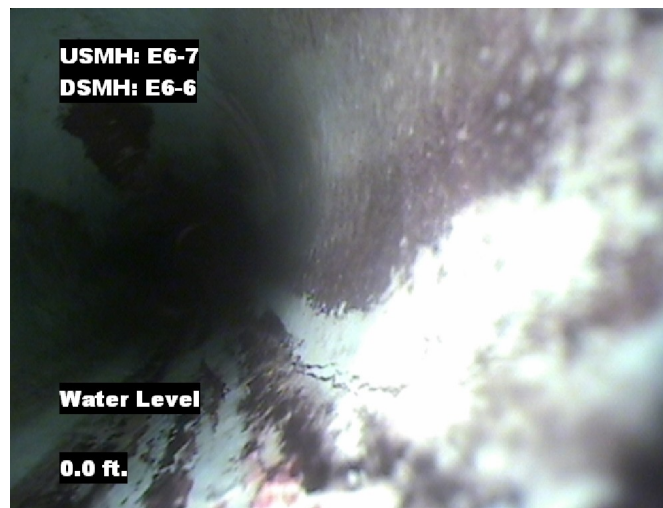


Image Report 4/Page

| Pipe Segment Refere... | City | Street | Material | Location C... | Sewer Use |
|------------------------|-----------------|--------------|--------------------|------------------|---------------|
| E6-7_E6-6 | Oliver Springs | Parking Lot | PolyVinyl Chloride | Parking Lo... | Sanitary |
| Upstream MH | Total Length | Year Laid | Shape | Location Details | |
| E6-7 | 99.9 | | Circular | Of HWy 62 | |
| DS Manhole | Length surveyed | Year Renewed | Height | Width | Pipe Joint... |
| E6-6 | 99.9 | | 8 | 8 | 13 |



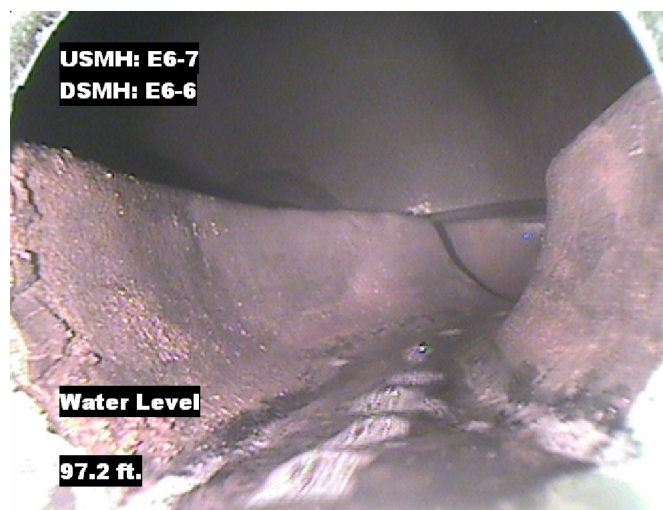
Distance: 0.0 ft. Grade: 0
Condition: Access Point Manhole
Remarks: E6-7



Distance: 0.0 ft. Grade: 0
Condition: Water Level
Remarks: N/A



Distance: 10.3 ft. Grade: 0
Condition: Tap Factory Made Active
Remarks: Car Wash

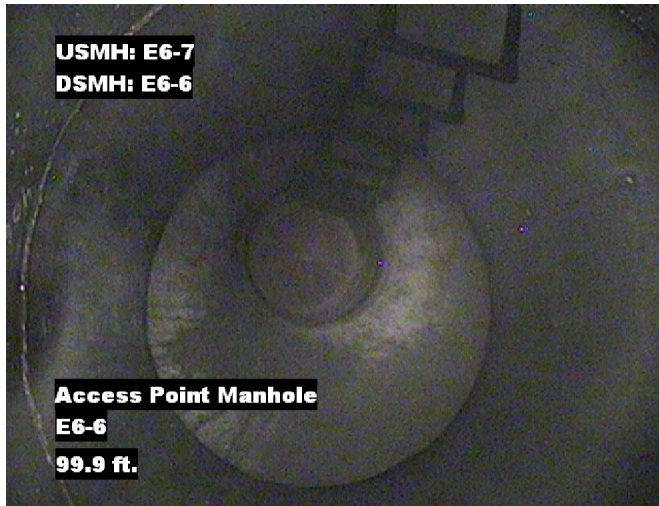


Distance: 97.2 ft. Grade: 0
Condition: Water Level
Remarks: N/A

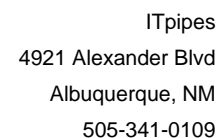


Image Report 4/Page

| | | | | | | |
|--|---------------------------------------|-------------------------------------|--|-------------------|--|-------------------------------------|
| Pipe Segment Refere... E6-7_E6-6 | City Oliver Springs | Street Parking Lot | Material PolyVinyl Chloride | | Location C... Parking Lo... | Sewer Use Sanitary |
| Upstream MH E6-7 | Total Length 99.9 | Year Laid | Shape Circular | | Location Details Of HWy 62 | |
| DS Manhole E6-6 | Length surveyed 99.9 | Year Renewed | Height 8 | Width 8 | Pipe Joint... 13 | |



Distance: 99.9 ft. Grade: 0
Condition: Access Point Manhole
Remarks: E6-6



| | | | | | | |
|-------------------------------------|------------------------------------|-------------------------|--------------------------------|---------------------------|--------------------------------|-----------------------|
| Pipe Segment Refere... E6-7_E6-6 | City Oliver Springs | Street Parking Lot | Material PolyVinyl Chloride | | Location C... Parking Lo... | Sewer Use Sanitary |
| Upstream MH E6-7 | Total Length 99.9 | Year Laid | Shape Circular | | Location Details Of HWy 62 | |
| DS Manhole E6-6 | Length surveyed 99.9 | Year Renewed | Height 8 | Width 8 | Pipe Joint... 13 | |
| SPR N/A | MPR N/A | PO Number 4397-03 | | Customer GRW | | |
| SPRI N/A | MPRI N/A | Work Order 4397-02 | | Purpose | | |
| QSR N/A | QMR N/A | | | Pre-Rehabilitation Survey | | |
| OPR N/A | Surveyed By Barry_Rogers | Direction Downstream | Date 20150615 | | Media label | |
| OPRI N/A | Certificate Number U-1012-16405 | Pre-Cleaning Jetting | Time 10:27 | | Weather Very Dry | |
| Date Cleaned 20150615 | | | End Time 10:32 | | Additional Info | |

Page #: 4