



## Defect Listing

Pipe Segment Refere... <b>E6-5_E6-4</b>	City <b>Oliver Springs</b>	Street <b>Hwy61&amp;62</b>	Material <b>PolyVinyl Chloride</b>	Location C... <b>Main Highw...</b>	Sewer Use <b>Sanitary</b>
Upstream MH <b>E6-5</b>	Total Length <b>120.4</b>	Year Laid	Shape <b>Circular</b>	Location Details <b>Runs under Hwy</b>	
DS Manhole <b>E6-4</b>	Length surveyed <b>120.4</b>	Year Renewed	Height <b>8</b>	Width <b>8</b>	Pipe Joint... <b>13</b>

SPR <b>12</b>	MPR <b>6</b>	PO Number <b>4397-03</b>	Customer <b>GRW</b>
SPRI <b>3</b>	MPRI <b>2</b>	Work Order <b>4397-02</b>	Purpose <b>Pre-Rehabilitation Survey</b>
QSR <b>3400</b>	QMR <b>2300</b>		
OPR <b>18</b>	Surveyed By <b>Barry Rogers</b>	Direction <b>Downstream</b>	Date <b>20150616</b>
OPRI <b>2.6</b>	Certificate Number <b>U-1012-16405</b>	Pre-Cleaning <b>Jetting</b>	Time <b>08:57</b>
	Date Cleaned <b>20150616</b>	End Time <b>09:03</b>	Weather <b>Very Dry</b>
			Media label
			Additional Info

Distance	Condition	Cont. Dfct.	Values			Joint	Clock Position		Grade
			1st	2nd	%		At/From	To	
0.0 ft.	Access Point Manhole				0	<input type="checkbox"/>			
Remarks: E6-5									
0.0 ft.	Water Level				5	<input type="checkbox"/>			
0.4 ft.	Lining Failure Defective End					<input type="checkbox"/>	3	12	3
4.7 ft.	Water Level Sag	S01			10	<input type="checkbox"/>			2
18.3 ft.	Water Level Sag	F01			10	<input type="checkbox"/>			2
50.5 ft.	Lining Failure Wrinkled					<input type="checkbox"/>	8		3
70.5 ft.	Lining Failure Wrinkled					<input type="checkbox"/>	8		3
90.7 ft.	Lining Failure Wrinkled					<input type="checkbox"/>	8	10	3
119.2 ft.	Water Level				10	<input type="checkbox"/>			
120.4 ft.	Access Point Manhole				0	<input type="checkbox"/>			
Remarks: E6-4									



## Image Report 4/Page

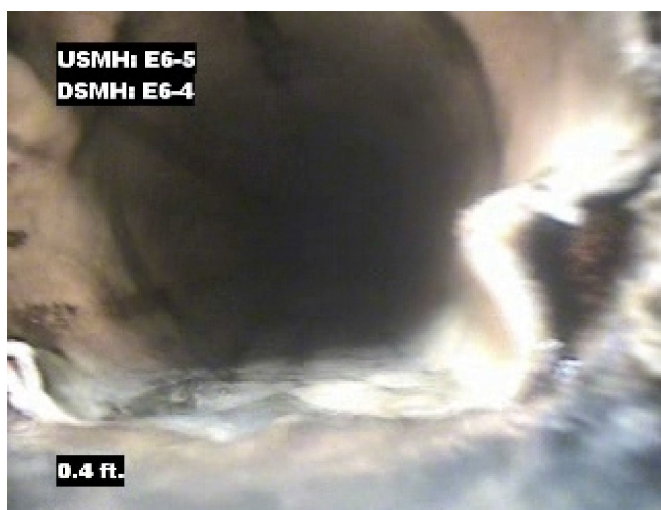
Pipe Segment Refere... <b>E6-5_E6-4</b>	<b>City</b> <b>Oliver Springs</b>	<b>Street</b> <b>Hwy61&amp;62</b>	<b>Material</b> <b>PolyVinyl Chloride</b>		<b>Location C...</b> <b>Main Highw...</b>	<b>Sewer Use</b> <b>Sanitary</b>
<b>Upstream MH</b> <b>E6-5</b>	Total Length <b>120.4</b>	Year Laid	<b>Shape</b> <b>Circular</b>		Location Details <b>Runs under Hwy</b>	
<b>DS Manhole</b> <b>E6-4</b>	<b>Length surveyed</b> <b>120.4</b>	Year Renewed	<b>Height</b> <b>8</b>	Width <b>8</b>	Pipe Joint...	



Distance: 0.0 ft. Grade: 0  
Condition: Access Point Manhole  
Remarks: E6-5



Distance: 0.0 ft. Grade: 0  
Condition: Water Level  
Remarks: N/A



Distance: 0.4 ft. Grade: 3  
Condition: Lining Failure Defective End  
Remarks: N/A

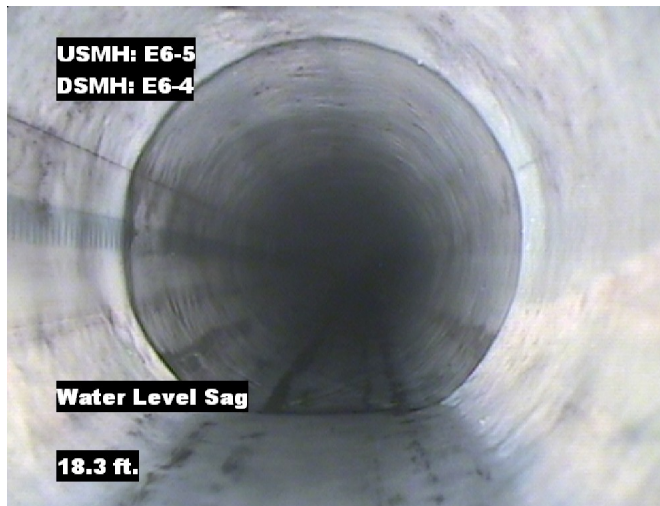


Distance: 4.7 ft. Grade: 2  
Condition: Water Level Sag  
Remarks: N/A



## Image Report 4/Page

Pipe Segment Refere...	City	Street	Material	Location C...	Sewer Use
E6-5_E6-4	Oliver Springs	Hwy61&62	PolyVinyl Chloride	Main Highw...	Sanitary
Upstream MH	Total Length	Year Laid	Shape	Location Details	
E6-5	120.4		Circular	Runs under Hwy	
DS Manhole	Length surveyed	Year Renewed	Height	Width	Pipe Joint...
E6-4	120.4		8	8	13



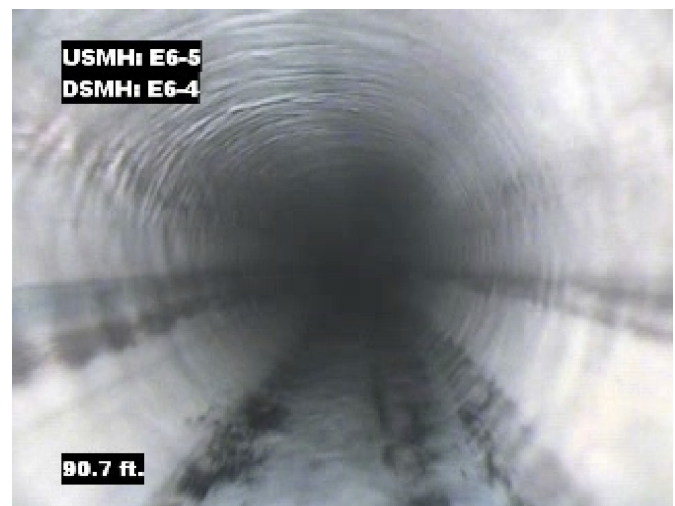
Distance: 18.3 ft. Grade: 2  
Condition: Water Level Sag  
Remarks: N/A



Distance: 50.5 ft. Grade: 3  
Condition: Lining Failure Wrinkled  
Remarks: N/A



Distance: 70.5 ft. Grade: 3  
Condition: Lining Failure Wrinkled  
Remarks: N/A



Distance: 90.7 ft. Grade: 3  
Condition: Lining Failure Wrinkled  
Remarks: N/A





## Image Report 4/Page

Pipe Segment Refere...	City	Street	Material	Location C...	Sewer Use
E6-5_E6-4	Oliver Springs	Hwy61&62	PolyVinyl Chloride	Main Highw...	Sanitary
Upstream MH	Total Length	Year Laid	Shape	Location Details	
E6-5	120.4		Circular	Runs under Hwy	
DS Manhole	Length surveyed	Year Renewed	Height	Width	Pipe Joint...
E6-4	120.4		8	8	13



Distance: 119.2 ft. Grade: 0  
Condition: Water Level  
Remarks: N/A



Distance: 120.4 ft. Grade: 0  
Condition: Access Point Manhole  
Remarks: E6-4



## PACP Conditions

Pipe Segment Refere... <b>E6-5_E6-4</b>	City <b>Oliver Springs</b>	Street <b>Hwy61&amp;62</b>	Material <b>PolyVinyl Chloride</b>	Location C... <b>Main Highw...</b>	Sewer Use <b>Sanitary</b>
Upstream MH <b>E6-5</b>	Total Length <b>120.4</b>	Year Laid	Shape <b>Circular</b>	Location Details <b>Runs under Hwy</b>	
DS Manhole <b>E6-4</b>	Length surveyed <b>120.4</b>	Year Renewed	Height <b>8</b>	Width <b>8</b>	Pipe Joint... <b>13</b>
SPR <b>12</b>	MPR <b>6</b>	PO Number <b>4397-03</b>		Customer <b>GRW</b>	
SPRI <b>3</b>	MPRI <b>2</b>	Work Order <b>4397-02</b>		Purpose <b>Pre-Rehabilitation Survey</b>	
QSR <b>3400</b>	QMR <b>2300</b>	Direction <b>Downstream</b>		Date <b>20150616</b>	Media label
OPR <b>18</b>	Surveyed By <b>Barry Rogers</b>	Pre-Cleaning <b>Jetting</b>		Time <b>08:57</b>	Weather <b>Very Dry</b>
OPRI <b>2.6</b>	Certificate Number <b>U-1012-16405</b>	Date Cleaned <b>20150616</b>		End Time <b>09:03</b>	Additional Info

Normal Defects			Structural Ratings			O & M Ratings			Combined Ratings		
			Grade Rating	No. Occur.	Rating	Grade Rating	No. Occur.	Rating	Grade Rating	No. Occur.	Rating
Continuous Defects			1	0	0	1	0	0	1	0	0
			2	0	0	2	0	0	2	0	0
			3	4	12	3	0	0	3	4	12
			4	0	0	4	0	0	4	0	0
			5	0	0	5	0	0	5	0	0
Code	ID	Length	0	0	0	2	3	6	2	3	6
MWLS	F01	13.6									
			Subtotals	4		Subtotals	3		Subtotals	7	
SUMMARY			Pipe Rating		12	Pipe Rating		6	Overall Pipe Rating		18
			Structural Index		3.0	O&M Index		2.0	Overall Index		2.6
			Str. Quick Rating		3400	O&M Quick Rating		2300	Ovrl. Quick Rating		3423