



## Defect Listing

Pipe Segment Refere... <b>E4-6_E4-5</b>	City <b>Oliver Springs</b>	Street <b>Midway</b>	Material <b>Concrete Pipe (non-...</b>	Location C... <b>Light High...</b>	Sewer Use <b>Sanitary</b>
Upstream MH <b>E4-6</b>	Total Length <b>393.4</b>	Year Laid	Shape <b>Circular</b>	Location Details <b>Street</b>	
DS Manhole <b>E4-5</b>	Length surveyed <b>393.4</b>	Year Renewed	Height <b>8</b>	Width <b>8</b>	Pipe Joint... <b>4</b>

SPR <b>N/A</b>	MPR <b>N/A</b>	PO Number <b>4397-03</b>		Customer <b>GRW</b>	
SPRI <b>N/A</b>	MPRI <b>N/A</b>	Work Order <b>4397-02</b>		Purpose <b>Pre-Rehabilitation Survey</b>	
QSR <b>N/A</b>	QMR <b>N/A</b>				
OPR <b>N/A</b>	Surveyed By <b>Barry Rogers</b>	Direction <b>Downstream</b>	Date <b>20150612</b>	Media label	
OPRI <b>N/A</b>	Certificate Number <b>U-1012-16405</b>	Pre-Cleaning <b>Jetting</b>	Time <b>14:06</b>	Weather <b>Dry</b>	
Date Cleaned <b>20150612</b>			End Time <b>14:27</b>	Additional Info	

Distance	Condition	Cont. Dfct.	Values			Joint	Clock Position		Grade
			1st	2nd	%		At/From	To	
0.0 ft.	Access Point Manhole				0	<input type="checkbox"/>			
Remarks: E4-6									
0.0 ft.	Water Level				5	<input type="checkbox"/>			
24.1 ft.	Tap Factory Made Active		6		0	<input type="checkbox"/>	9		
66.6 ft.	Tap Factory Made		6		0	<input type="checkbox"/>	3		
123.0 ft.	Tap Factory Made		6		0	<input type="checkbox"/>	12		
129.5 ft.	Tap Factory Made		6		0	<input type="checkbox"/>	3		
134.3 ft.	Tap Break-In		6		0	<input type="checkbox"/>	9		
166.7 ft.	Tap Break-In		6		0	<input type="checkbox"/>	2		
262.4 ft.	Tap Factory Made		6		0	<input type="checkbox"/>	3		
265.8 ft.	Tap Factory Made		6		0	<input type="checkbox"/>	9		
359.5 ft.	Tap Factory Made		6		0	<input type="checkbox"/>	3		
391.0 ft.	Water Level				5	<input type="checkbox"/>			
393.4 ft.	Access Point Manhole				0	<input type="checkbox"/>			
Remarks: E4-5									

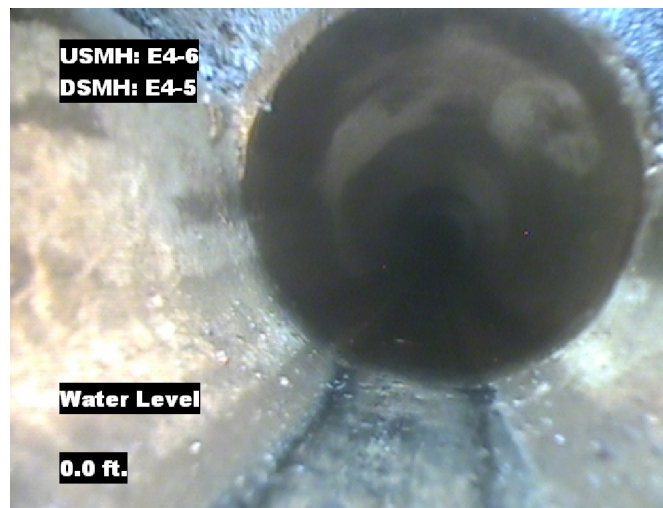


## Image Report 4/Page

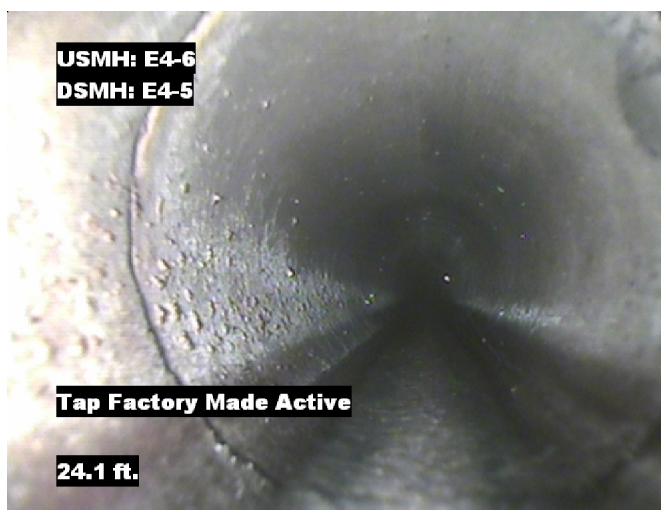
Pipe Segment Refere... <b>E4-6_E4-5</b>	<b>City</b> <b>Oliver Springs</b>	<b>Street</b> <b>Midway</b>	<b>Material</b> <b>Concrete Pipe (non-...</b>		<b>Location C...</b> <b>Light High...</b>	<b>Sewer Use</b> <b>Sanitary</b>
<b>Upstream MH</b> <b>E4-6</b>	Total Length <b>393.4</b>	Year Laid	<b>Shape</b> <b>Circular</b>		Location Details <b>Street</b>	
<b>DS Manhole</b> <b>E4-5</b>	<b>Length surveyed</b> <b>393.4</b>	Year Renewed	<b>Height</b> <b>8</b>	Width <b>8</b>	Pipe Joint... <b>4</b>	



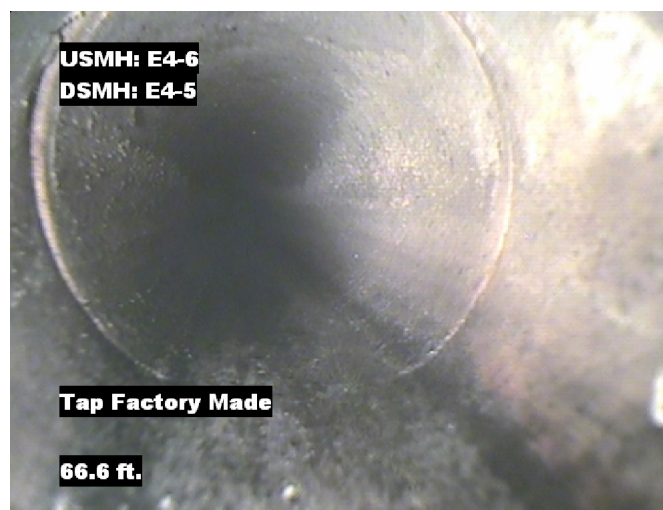
Distance: 0.0 ft. Grade: 0  
Condition: Access Point Manhole  
Remarks: E4-6



Distance: 0.0 ft. Grade: 0  
Condition: Water Level  
Remarks: N/A



Distance: 24.1 ft. Grade: 0  
Condition: Tap Factory Made Active  
Remarks: N/A

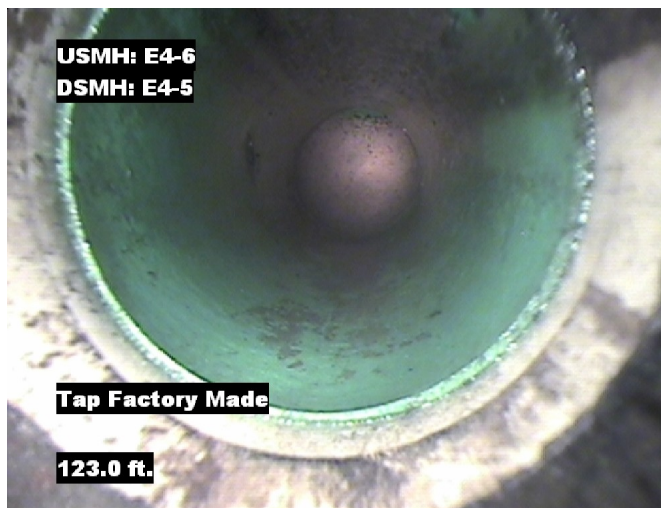


Distance: 66.6 ft. Grade: 0  
Condition: Tap Factory Made  
Remarks: N/A

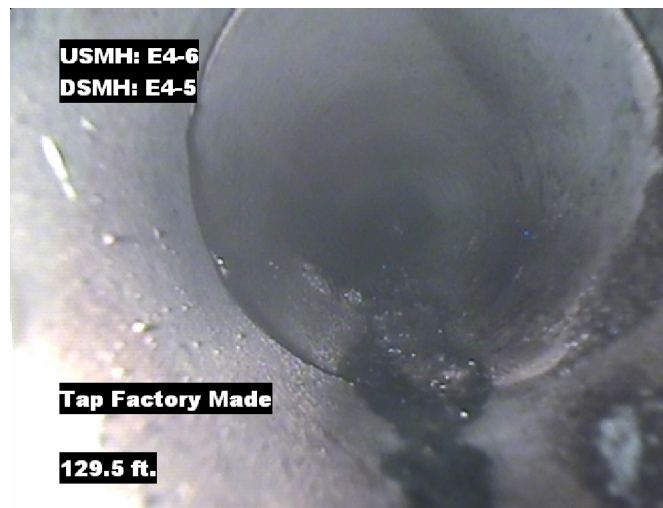


## Image Report 4/Page

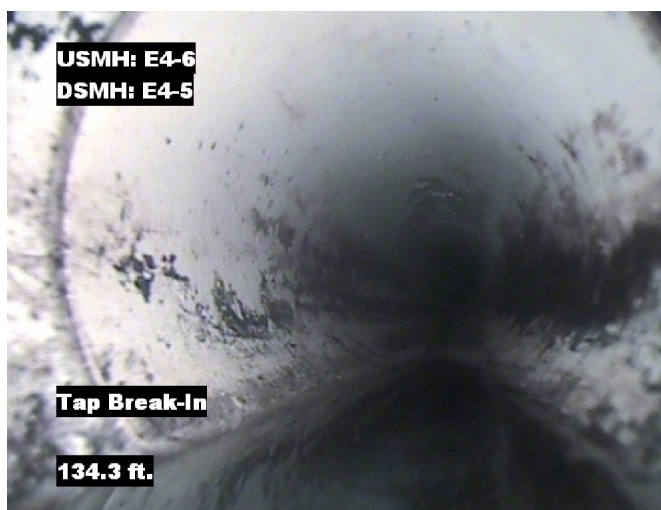
Pipe Segment Refere...	City	Street	Material	Location C...	Sewer Use
E4-6_E4-5	Oliver Springs	Midway	Concrete Pipe (non-...	Light High...	Sanitary
Upstream MH	Total Length	Year Laid	Shape	Location Details	
E4-6	393.4		Circular	Street	
DS Manhole	Length surveyed	Year Renewed	Height	Width	Pipe Joint...
E4-5	393.4		8	8	4



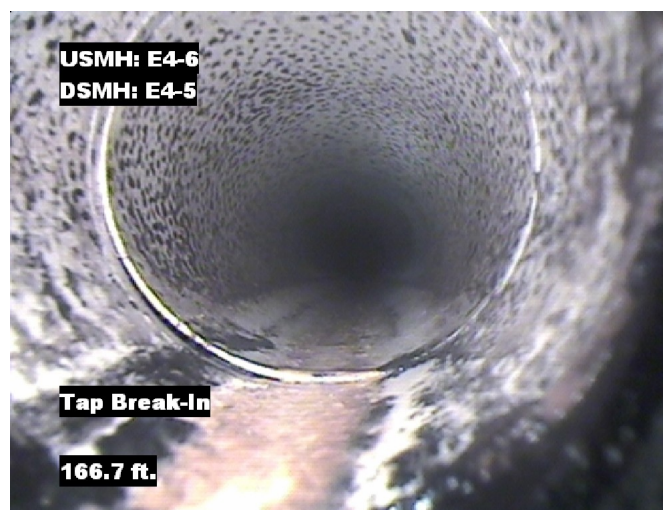
Distance: 123.0 ft. Grade: 0  
Condition: Tap Factory Made  
Remarks: N/A



Distance: 129.5 ft. Grade: 0  
Condition: Tap Factory Made  
Remarks: N/A



Distance: 134.3 ft. Grade: 0  
Condition: Tap Break-In  
Remarks: N/A



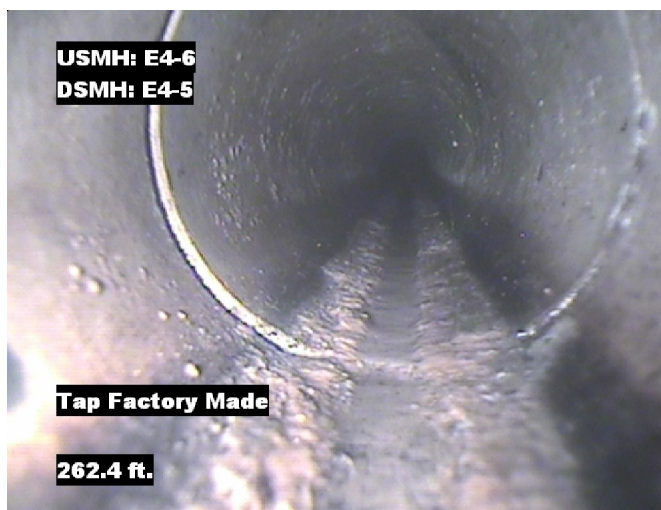
Distance: 166.7 ft. Grade: 0  
Condition: Tap Break-In  
Remarks: N/A



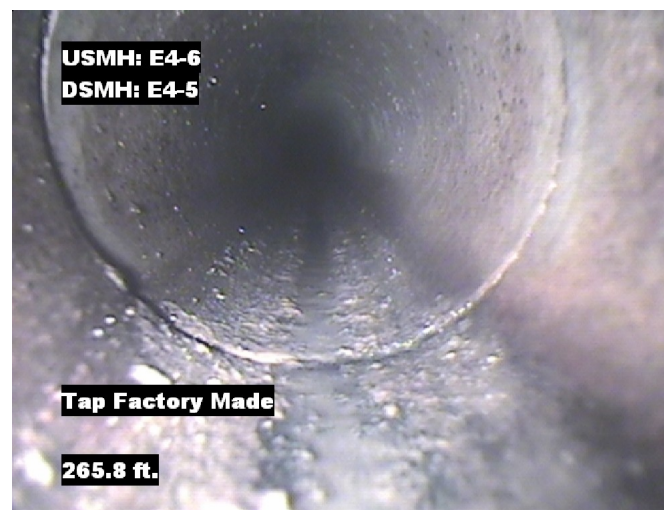


## Image Report 4/Page

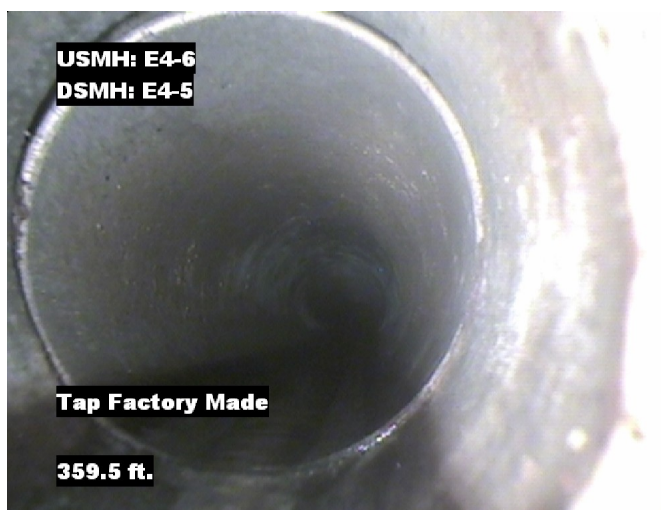
Pipe Segment Refere...	City	Street	Material	Location C...	Sewer Use
E4-6_E4-5	Oliver Springs	Midway	Concrete Pipe (non-...	Light High...	Sanitary
Upstream MH	Total Length	Year Laid	Shape	Location Details	
E4-6	393.4		Circular	Street	
DS Manhole	Length surveyed	Year Renewed	Height	Width	Pipe Joint...
E4-5	393.4		8	8	4



Distance: 262.4 ft. Grade: 0  
Condition: Tap Factory Made  
Remarks: N/A



Distance: 265.8 ft. Grade: 0  
Condition: Tap Factory Made  
Remarks: N/A



Distance: 359.5 ft. Grade: 0  
Condition: Tap Factory Made  
Remarks: N/A



Distance: 391.0 ft. Grade: 0  
Condition: Water Level  
Remarks: N/A



## Image Report 4/Page

Pipe Segment Refere...	City	Street	Material	Location C...	Sewer Use
E4-6_E4-5	Oliver Springs	Midway	Concrete Pipe (non-...	Light High...	Sanitary
Upstream MH	Total Length	Year Laid	Shape	Location Details	
E4-6	393.4		Circular	Street	
DS Manhole	Length surveyed	Year Renewed	Height	Width	Pipe Joint...
E4-5	393.4		8	8	4



Distance: 393.4 ft. Grade: 0  
Condition: Access Point Manhole  
Remarks: E4-5



## PACP Conditions

Pipe Segment Refere... <b>E4-6_E4-5</b>	City <b>Oliver Springs</b>	Street <b>Midway</b>	Material <b>Concrete Pipe (non-...</b>	Location C... <b>Light High...</b>	Sewer Use <b>Sanitary</b>
Upstream MH <b>E4-6</b>	Total Length <b>393.4</b>	Year Laid	Shape <b>Circular</b>	Location Details <b>Street</b>	
DS Manhole <b>E4-5</b>	Length surveyed <b>393.4</b>	Year Renewed	Height <b>8</b>	Width <b>8</b>	Pipe Joint... <b>4</b>
SPR <b>N/A</b>	MPR <b>N/A</b>	PO Number <b>4397-03</b>		Customer <b>GRW</b>	
SPRI <b>N/A</b>	MPRI <b>N/A</b>	Work Order <b>4397-02</b>		Purpose <b>Pre-Rehabilitation Survey</b>	
QSR <b>N/A</b>	QMR <b>N/A</b>	Direction <b>Downstream</b>		Date <b>20150612</b>	
OPR <b>N/A</b>	Surveyed By <b>Barry Rogers</b>	Pre-Cleaning <b>Jetting</b>		Media label	
OPRI <b>N/A</b>	Certificate Number <b>U-1012-16405</b>	Time <b>14:06</b>		Weather <b>Dry</b>	
Date Cleaned <b>20150612</b>			End Time <b>14:27</b>		Additional Info

			Structural Ratings			O & M Ratings			Combined Ratings		
			Grade Rating	No. Occur.	Rating	Grade Rating	No. Occur.	Rating	Grade Rating	No. Occur.	Rating
Normal Defects											
Continuous Defects			1	0	0	1	0	0	1	0	0
			2	0	0	2	0	0	2	0	0
			3	0	0	3	0	0	3	0	0
			4	0	0	4	0	0	4	0	0
			5	0	0	5	0	0	5	0	0
Code	ID	Length									