



## Defect Listing

Pipe Segment Refere...	City	Street	Material	Location C...	Sewer Use
<b>E3-1_E3-2</b>	<b>Oliver Springs</b>	<b>Hwy 62</b>	<b>PolyVinyl Chloride</b>	<b>Easement/R...</b>	<b>Sanitary</b>
Upstream MH	Total Length	Year Laid	Shape	Location Details	
<b>E3-1</b>	<b>305.8</b>		<b>Circular</b>	<b>Side of Hwy</b>	
DS Manhole	Length surveyed	Year Renewed	Height	Width	Pipe Joint...
<b>E3-2</b>	<b>305.8</b>		<b>8</b>	<b>8</b>	<b>13</b>

SPR	<b>N/A</b>	MPR	<b>8</b>	PO Number	Customer
SPRI	<b>N/A</b>	MPRI	<b>2.7</b>	<b>4397-03</b>	<b>GRW</b>
QSR	<b>N/A</b>	QMR	<b>4122</b>	Work Order	Purpose
			<b>4397-02</b>	<b>Pre-Rehabilitation Survey</b>	
OPR	Surveyed By	Direction	Date	Media label	
<b>8</b>	<b>Barry Rogers</b>	<b>Downstream</b>	<b>20150619</b>		
OPRI	Certificate Number	Pre-Cleaning	Time	Weather	
<b>2.7</b>	<b>U-1012-16405</b>	<b>Jetting</b>	<b>15:30</b>	<b>Damp</b>	
Date Cleaned			End Time	Additional Info	
<b>20150619</b>			<b>15:41</b>		

Distance	Condition	Cont. Dfct.	Values			Joint	Clock Position		Grade
			1st	2nd	%		At/From	To	
0.0 ft.	Access Point Manhole				0	<input type="checkbox"/>			
Remarks: E3-1									
0.0 ft.	Water Level				10	<input type="checkbox"/>			
50.7 ft.	Infiltration Runner				0	<input type="checkbox"/>	12		4
111.9 ft.	Tap Factory Made Active		6		0	<input type="checkbox"/>	9		
171.6 ft.	Water Level Sag	S01			15	<input type="checkbox"/>			2
178.7 ft.	Water Level Sag	F01			15	<input type="checkbox"/>			2
289.8 ft.	Water Level Sag				10	<input type="checkbox"/>			2
301.8 ft.	Water Level				5	<input type="checkbox"/>			
305.8 ft.	Access Point Manhole				0	<input type="checkbox"/>			
Remarks: E3-2									

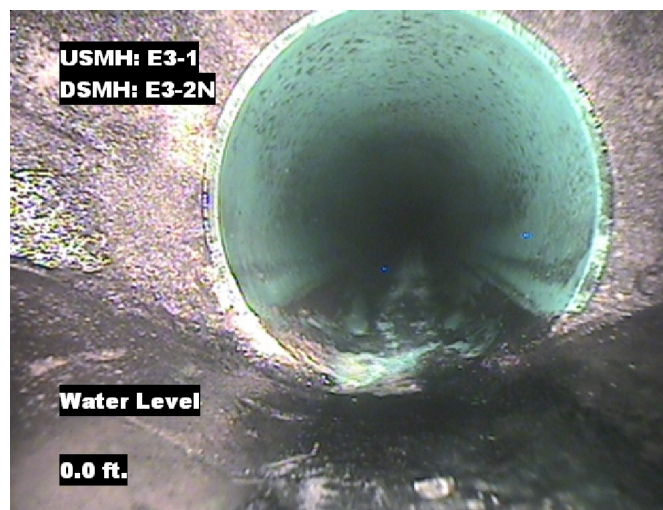


## Image Report 4/Page

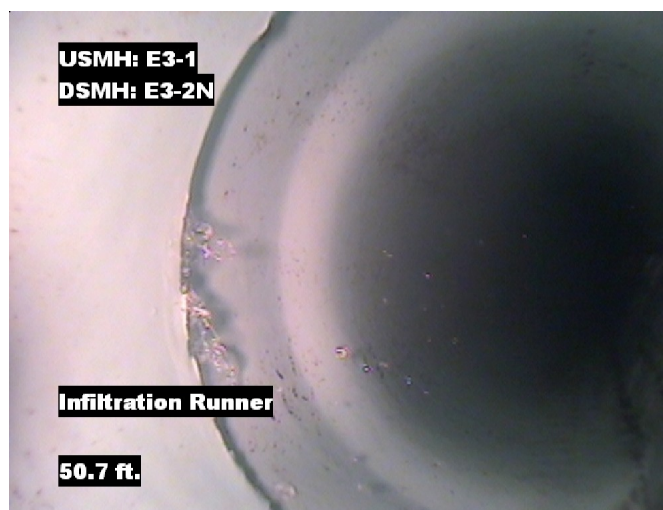
Pipe Segment Refere...	City	Street	Material	Location C...	Sewer Use
E3-1_E3-2	Oliver Springs	Hwy 62	PolyVinyl Chloride	Easement/R...	Sanitary
Upstream MH	Total Length	Year Laid	Shape	Location Details	
E3-1	305.8		Circular	Side of Hwy	
DS Manhole	Length surveyed	Year Renewed	Height	Width	Pipe Joint...
E3-2	305.8		8	8	13



Distance: 0.0 ft. Grade: 0  
Condition: Access Point Manhole  
Remarks: E3-1



Distance: 0.0 ft. Grade: 0  
Condition: Water Level  
Remarks: N/A



Distance: 50.7 ft. Grade: 4  
Condition: Infiltration Runner  
Remarks: N/A

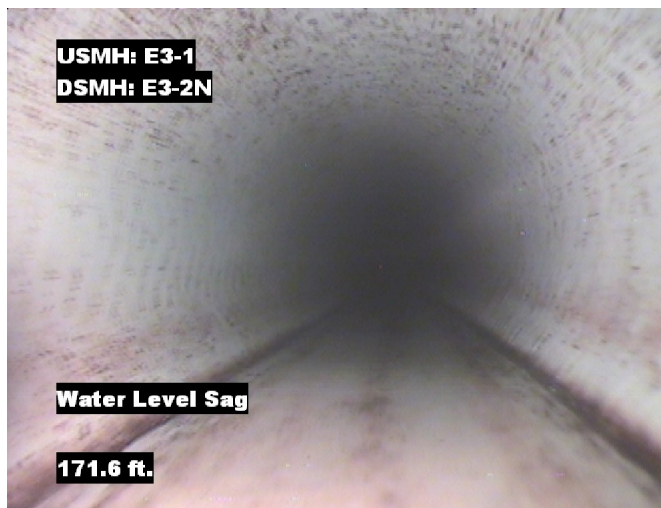


Distance: 111.9 ft. Grade: 0  
Condition: Tap Factory Made Active  
Remarks: N/A



## Image Report 4/Page

Pipe Segment Refere... <b>E3-1_E3-2</b>	<b>City</b> <b>Oliver Springs</b>	<b>Street</b> <b>Hwy 62</b>	<b>Material</b> <b>PolyVinyl Chloride</b>		<b>Location C...</b> <b>Easement/R...</b>	<b>Sewer Use</b> <b>Sanitary</b>
<b>Upstream MH</b> <b>E3-1</b>	Total Length <b>305.8</b>	Year Laid	<b>Shape</b> <b>Circular</b>		Location Details <b>Side of Hwy</b>	
<b>DS Manhole</b> <b>E3-2</b>	<b>Length surveyed</b> <b>305.8</b>	Year Renewed	<b>Height</b> <b>8</b>	Width <b>8</b>	Pipe Joint... <b>13</b>	



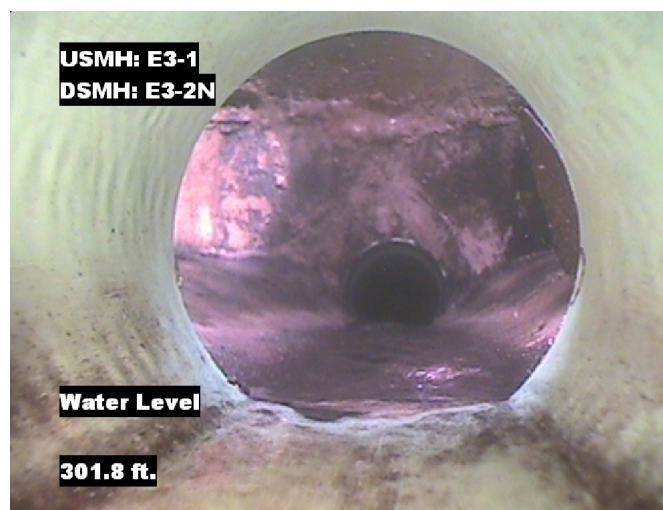
Distance: 171.6 ft. Grade: 2  
Condition: Water Level Sag  
Remarks: N/A



Distance: 178.7 ft. Grade: 2  
Condition: Water Level Sag  
Remarks: N/A



Distance: 289.8 ft. Grade: 2  
Condition: Water Level Sag  
Remarks: N/A



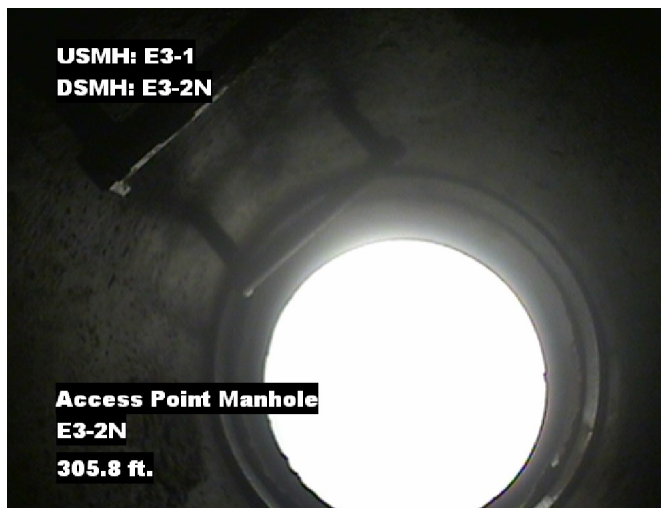
Distance: 301.8 ft. Grade: 0  
Condition: Water Level  
Remarks: N/A





## Image Report 4/Page

Pipe Segment Refere...	City	Street	Material	Location C...	Sewer Use
<b>E3-1_E3-2</b>	<b>Oliver Springs</b>	<b>Hwy 62</b>	<b>PolyVinyl Chloride</b>	<b>Easement/R...</b>	<b>Sanitary</b>
Upstream MH	Total Length	Year Laid	Shape	Location Details	
<b>E3-1</b>	<b>305.8</b>		<b>Circular</b>	<b>Side of Hwy</b>	
DS Manhole	Length surveyed	Year Renewed	Height	Width	Pipe Joint...
<b>E3-2</b>	<b>305.8</b>		<b>8</b>	<b>8</b>	<b>13</b>



Distance: 305.8 ft. Grade: 0  
Condition: Access Point Manhole  
Remarks: E3-2



## PACP Conditions

Pipe Segment Refere... <b>E3-1_E3-2</b>	City <b>Oliver Springs</b>	Street <b>Hwy 62</b>	Material <b>PolyVinyl Chloride</b>	Location C... <b>Easement/R...</b>	Sewer Use <b>Sanitary</b>
Upstream MH <b>E3-1</b>	Total Length <b>305.8</b>	Year Laid	Shape <b>Circular</b>	Location Details <b>Side of Hwy</b>	
DS Manhole <b>E3-2</b>	Length surveyed <b>305.8</b>	Year Renewed	Height <b>8</b>	Width <b>8</b>	Pipe Joint... <b>13</b>
SPR <b>N/A</b>	MPR <b>8</b>	PO Number <b>4397-03</b>		Customer <b>GRW</b>	
SPRI <b>N/A</b>	MPRI <b>2.7</b>	Work Order <b>4397-02</b>		Purpose <b>Pre-Rehabilitation Survey</b>	
QSR <b>N/A</b>	QMR <b>4122</b>				
OPR <b>8</b>	Surveyed By <b>Barry Rogers</b>	Direction <b>Downstream</b>	Date <b>20150619</b>	Media label	
OPRI <b>2.7</b>	Certificate Number <b>U-1012-16405</b>	Pre-Cleaning <b>Jetting</b>	Time <b>15:30</b>	Weather <b>Damp</b>	
Date Cleaned <b>20150619</b>			End Time <b>15:41</b>	Additional Info	

Normal Defects			Structural Ratings			O & M Ratings			Combined Ratings		
			Grade Rating	No. Occur.	Rating	Grade Rating	No. Occur.	Rating	Grade Rating	No. Occur.	Rating
Continuous Defects			1	0	0	1	0	0	1	0	0
			2	0	0	2	1	2	2	1	2
			3	0	0	3	0	0	3	0	0
			4	0	0	4	1	4	4	1	4
			5	0	0	5	0	0	5	0	0
Code	ID	Length	0	0	0	2	1	2	2	1	2
MWLS	F01	7.1									
			Subtotals	0		Subtotals	3		Subtotals	3	
SUMMARY			Pipe Rating	0		Pipe Rating	8		Overall Pipe Rating	8	
			Structural Index	0		O&M Index	2.7		Overall Index	2.7	
			Str. Quick Rating	0000		O&M Quick Rating	4122		Ovrl. Quick Rating	4122	