



Defect Listing

Pipe Segment Refere... E2-5_E2-4	City Oliver Springs	Street hwy 62	Material PolyVinyl Chloride	Location C... Yard	Sewer Use Sanitary
Upstream MH E2-5	Total Length 289.2	Year Laid	Shape Circular	Location Details usmh located by dri...	
DS Manhole E2-4	Length surveyed 289.2	Year Renewed	Height 8	Width 8	Pipe Joint... 13

SPR N/A	MPR 13	PO Number 4397-03	Customer GRW
SPRI N/A	MPRI 1.9	Work Order 4397-02	Purpose Pre-Rehabilitation Survey
QSR N/A	QMR 2611		
OPR 13	Surveyed By David_brown	Direction Downstream	Date 20150620
OPRI 1.9	Certificate Number U-607-5202	Pre-Cleaning Heavy Cleaning	Time 10:27
	Date Cleaned 20150620	End Time 10:45	Weather Damp
			Media label
			Additional Info

Distance	Condition	Cont. Dfct.	Values			Joint	Clock Position		Grade
			1st	2nd	%		At/From	To	
0.0 ft.	Access Point Manhole				0	<input type="checkbox"/>			
Remarks: E2-5									
0.0 ft.	Water Level				5	<input type="checkbox"/>			
54.4 ft.	Water Level Sag				10	<input type="checkbox"/>			2
55.8 ft.	Water Level Sag	S01			15	<input type="checkbox"/>			2
60.3 ft.	Water Level Sag	F01			15	<input type="checkbox"/>			2
61.5 ft.	Water Level Sag				5	<input type="checkbox"/>			2
124.4 ft.	Water Level Sag	S02			15	<input type="checkbox"/>			2
128.6 ft.	Water Level Sag	F02			15	<input type="checkbox"/>			2
130.0 ft.	Water Level				5	<input type="checkbox"/>			
200.3 ft.	Roots Tap Lateral				15	<input type="checkbox"/>	1	2	2
200.3 ft.	Roots Fine Connection				0	<input type="checkbox"/>	3		1
200.3 ft.	Tap Factory Made Defective		6		0	<input type="checkbox"/>	2		2
Remarks: ANNULAR SPACE									
289.2 ft.	Water Level				10	<input type="checkbox"/>			
289.2 ft.	Access Point Manhole				0	<input type="checkbox"/>			
Remarks: E2-4									

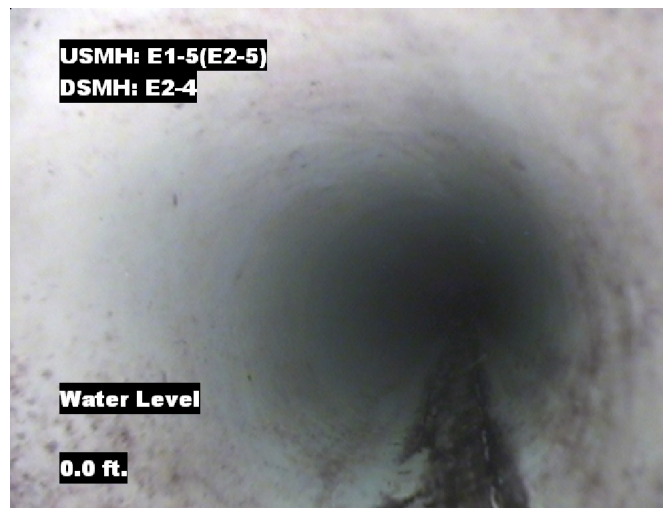


Image Report 4/Page

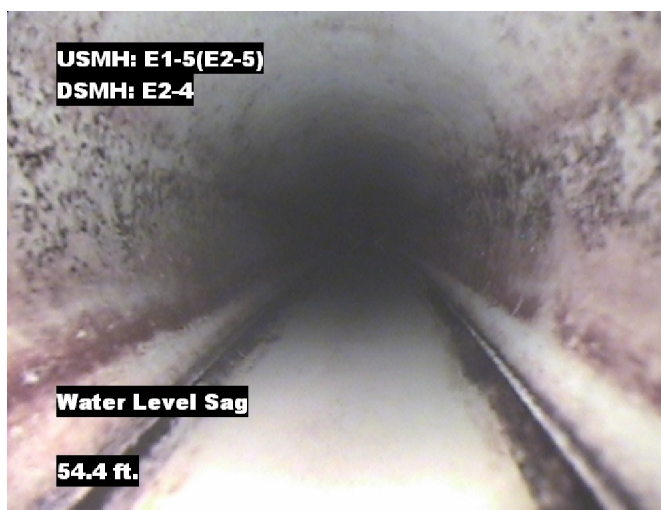
Pipe Segment Refere... E2-5_E2-4	City Oliver Springs	Street hwy 62	Material PolyVinyl Chloride		Location C... Yard	Sewer Use Sanitary
Upstream MH E2-5	Total Length 289.2	Year Laid	Shape Circular		Location Details usmh located by dri...	
DS Manhole E2-4	Length surveyed 289.2	Year Renewed	Height 8	Width 8	Pipe Joint...	



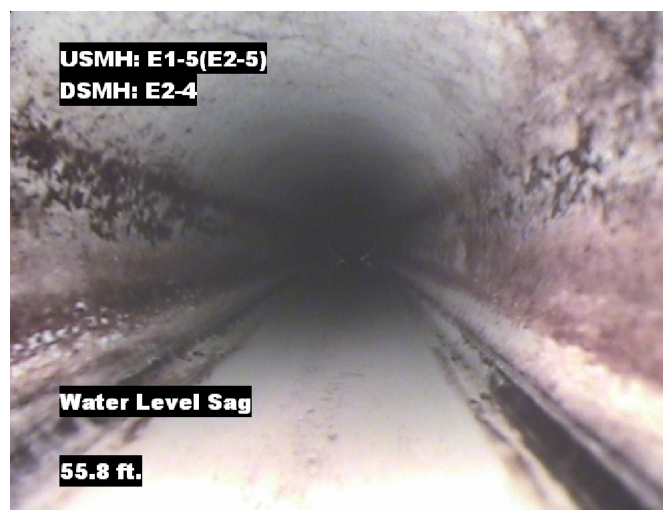
Distance: 0.0 ft. Grade: 0
Condition: Access Point Manhole
Remarks: E2-5



Distance: 0.0 ft. Grade: 0
Condition: Water Level
Remarks: N/A



Distance: 54.4 ft. Grade: 2
Condition: Water Level Sag
Remarks: N/A

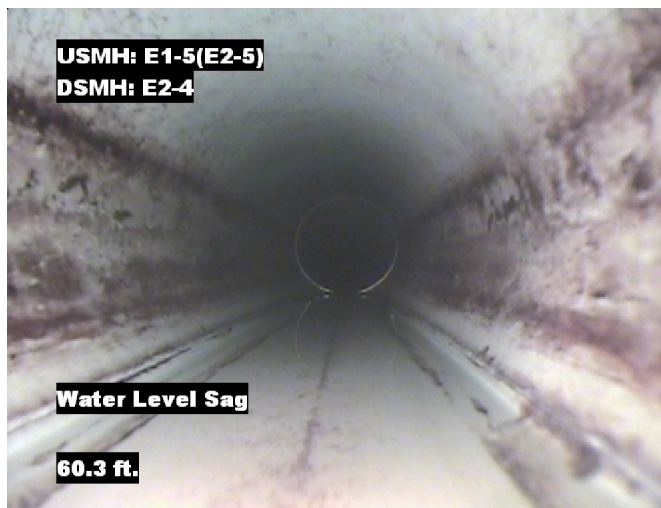


Distance: 55.8 ft. Grade: 2
Condition: Water Level Sag
Remarks: N/A

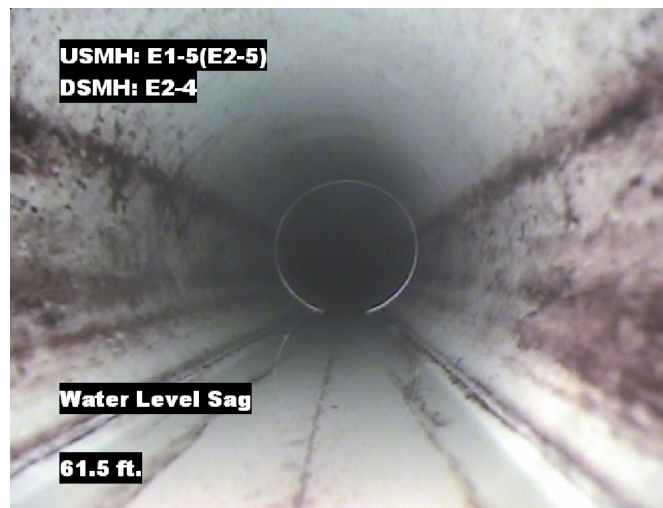


Image Report 4/Page

Pipe Segment Refere... E2-5_E2-4	City Oliver Springs	Street hwy 62	Material PolyVinyl Chloride		Location C... Yard	Sewer Use Sanitary
Upstream MH E2-5	Total Length 289.2	Year Laid	Shape Circular		Location Details usmh located by dri...	
DS Manhole E2-4	Length surveyed 289.2	Year Renewed	Height 8	Width 8	Pipe Joint...	13



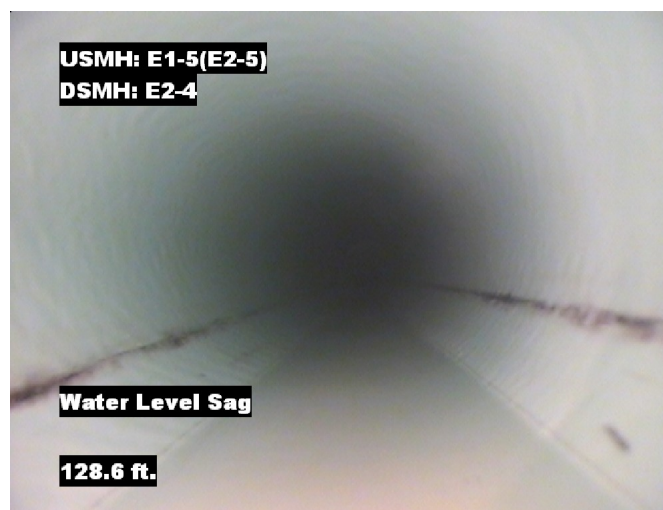
Distance: 60.3 ft. Grade: 2
Condition: Water Level Sag
Remarks: N/A



Distance: 61.5 ft. Grade: 2
Condition: Water Level Sag
Remarks: N/A



Distance: 124.4 ft. Grade: 2
Condition: Water Level Sag
Remarks: N/A

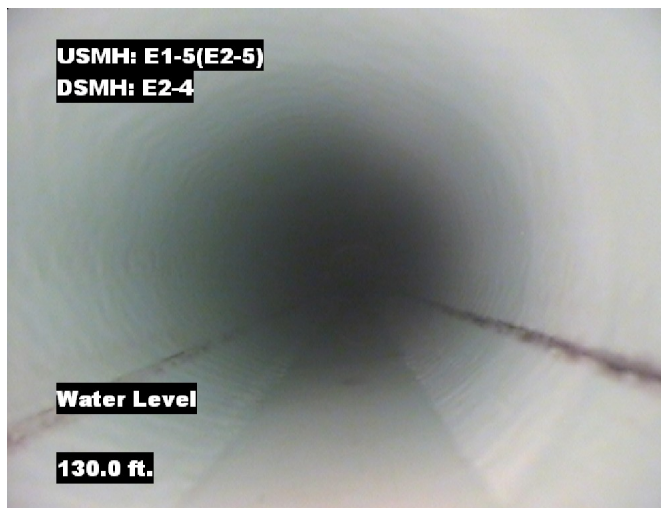


Distance: 128.6 ft. Grade: 2
Condition: Water Level Sag
Remarks: N/A

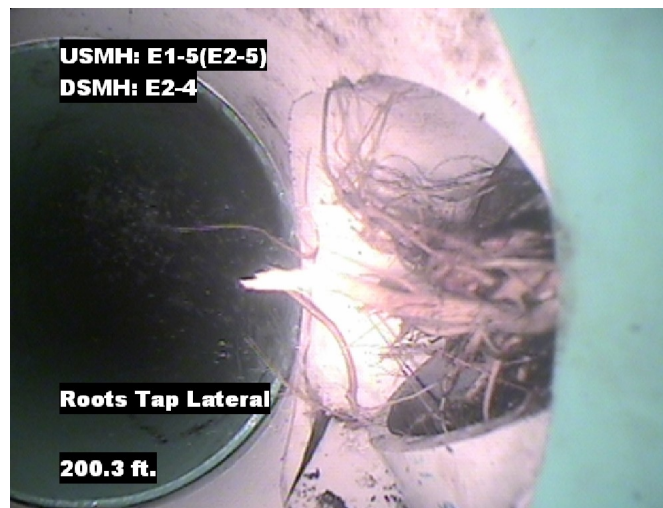


Image Report 4/Page

Pipe Segment Refere... E2-5_E2-4	City Oliver Springs	Street hwy 62	Material PolyVinyl Chloride		Location C... Yard	Sewer Use Sanitary
Upstream MH E2-5	Total Length 289.2	Year Laid	Shape Circular		Location Details usmh located by dri...	
DS Manhole E2-4	Length surveyed 289.2	Year Renewed	Height 8	Width 8	Pipe Joint... 13	



Distance: 130.0 ft. Grade: 0
Condition: Water Level
Remarks: N/A



Distance: 200.3 ft. Grade: 2
Condition: Roots Tap Lateral
Remarks: N/A



Distance: 200.3 ft. Grade: 1
Condition: Roots Fine Connection
Remarks: N/A

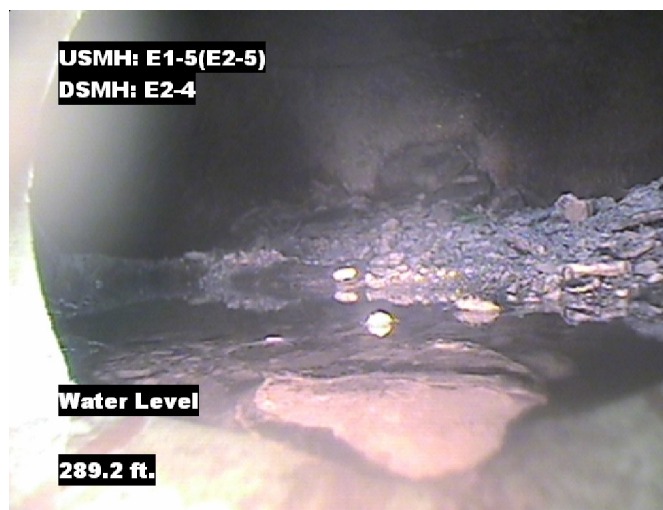


Distance: 200.3 ft. Grade: 2
Condition: Tap Factory Made Defective
Remarks: ANNULAR SPACE

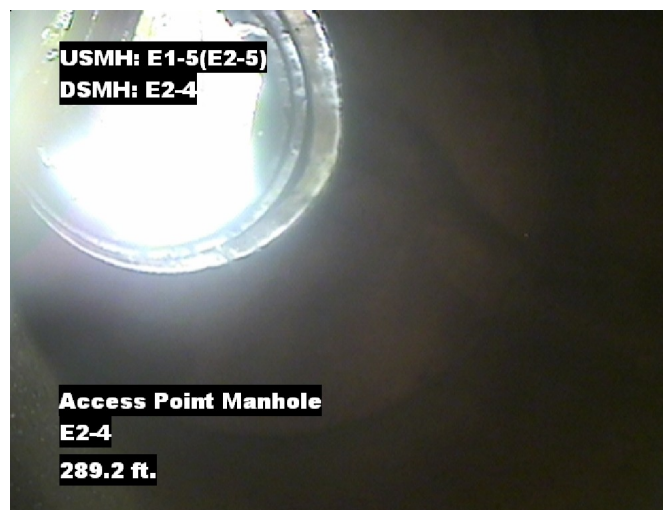


Image Report 4/Page

Pipe Segment Refere... E2-5_E2-4	City Oliver Springs	Street hwy 62	Material PolyVinyl Chloride		Location C... Yard	Sewer Use Sanitary
Upstream MH E2-5	Total Length 289.2	Year Laid	Shape Circular		Location Details usmh located by dri...	
DS Manhole E2-4	Length surveyed 289.2	Year Renewed	Height 8	Width 8	Pipe Joint...	13



Distance: 289.2 ft. Grade: 0
Condition: Water Level
Remarks: N/A



Distance: 289.2 ft. Grade: 0
Condition: Access Point Manhole
Remarks: E2-4



Pipe Segment Refere... E2-5_E2-4	City Oliver Springs	Street hwy 62	Material PolyVinyl Chloride		Location C... Yard	Sewer Use Sanitary
Upstream MH E2-5	Total Length 289.2	Year Laid	Shape Circular		Location Details usmh located by dri...	
DS Manhole E2-4	Length surveyed 289.2	Year Renewed	Height 8	Width 8	Pipe Joint... 13	
SPR N/A	MPR 13	PO Number 4397-03		Customer GRW		
SPRI N/A	MPRI 1.9	Work Order 4397-02		Purpose		
QSR N/A	QMR 2611			Pre-Rehabilitation Survey		
OPR 13	Surveyed By David_brown	Direction Downstream	Date 20150620		Media label	
OPRI 1.9	Certificate Number U-607-5202	Pre-Cleaning Heavy Cleaning	Time 10:27		Weather Damp	
Date Cleaned 20150620		End Time 10:45		Additional Info		

[illegible]