



## Defect Listing

Pipe Segment Refere... <b>E2-4_E2-3</b>	City <b>Oliver Springs</b>	Street <b>HWY 62</b>	Material <b>Other</b>	Location C... <b>Main Highw...</b>	Sewer Use <b>Sanitary</b>
Upstream MH <b>E2-4</b>	Total Length <b>174.3</b>	Year Laid	Shape <b>Circular</b>	Location Details <b>usmh Located in woo...</b>	
DS Manhole <b>E2-3</b>	Length surveyed <b>174.3</b>	Year Renewed	Height <b>8</b>	Width <b>8</b>	Pipe Joint... <b>N/A</b>

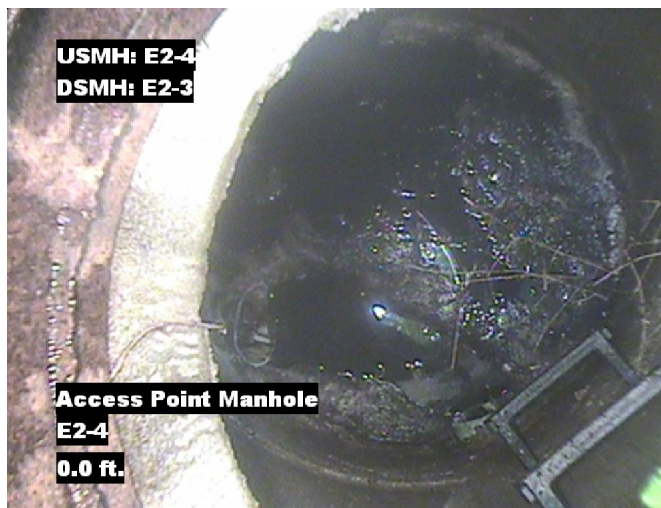
SPR <b>3</b>	MPR <b>6</b>	PO Number <b>4397-03</b>	Customer <b>GRW</b>
SPRI <b>3</b>	MPRI <b>2</b>	Work Order <b>4397-02</b>	Purpose <b>Pre-Rehabilitation Survey</b>
QSR <b>3100</b>	QMR <b>2300</b>		
OPR <b>9</b>	Surveyed By <b>David_brown</b>	Direction <b>Downstream</b>	Date <b>20150620</b>
OPRI <b>2.3</b>	Certificate Number <b>U-607-5202</b>	Pre-Cleaning <b>Jetting</b>	Time <b>08:52</b>
	Date Cleaned <b>20150620</b>	End Time <b>09:05</b>	Weather <b>Damp</b>
			Media label
			Additional Info

Distance	Condition	Cont. Dfct.	Values			Joint	Clock Position		Grade
			1st	2nd	%		At/From	To	
0.0 ft.	Access Point Manhole				0	<input type="checkbox"/>			
Remarks: E2-4									
0.0 ft.	Water Level				5	<input type="checkbox"/>			
1.0 ft.	Lining Failure Wrinkled	S01			0	<input type="checkbox"/>	8		3
5.0 ft.	Lining Failure Wrinkled	F01			0	<input type="checkbox"/>	8		3
148.1 ft.	Water Level Sag	S02			15	<input type="checkbox"/>			2
150.9 ft.	Water Level Sag				15	<input type="checkbox"/>			2
152.2 ft.	Water Level Sag	F02			15	<input type="checkbox"/>			2
152.2 ft.	Water Level Sag				5	<input type="checkbox"/>			2
173.1 ft.	Water Level				5	<input type="checkbox"/>			
174.3 ft.	Access Point Manhole				0	<input type="checkbox"/>			
Remarks: E2-3									

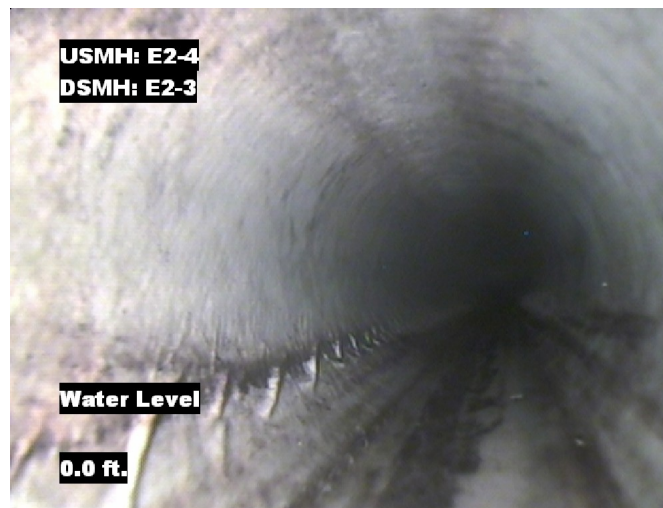


## Image Report 4/Page

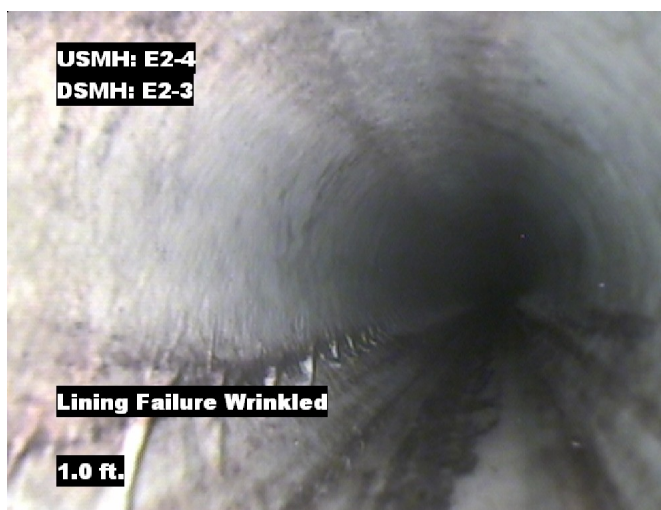
Pipe Segment Refere... <b>E2-4_E2-3</b>	<b>City</b> <b>Oliver Springs</b>	<b>Street</b> <b>HWY 62</b>	<b>Material</b> <b>Other</b>		<b>Location C...</b> <b>Main Highw...</b>	<b>Sewer Use</b> <b>Sanitary</b>
<b>Upstream MH</b> <b>E2-4</b>	Total Length <b>174.3</b>	Year Laid	<b>Shape</b> <b>Circular</b>		Location Details <b>usmh Located in woo...</b>	
<b>DS Manhole</b> <b>E2-3</b>	<b>Length surveyed</b> <b>174.3</b>	Year Renewed	<b>Height</b> <b>8</b>	Width <b>8</b>	Pipe Joint...	



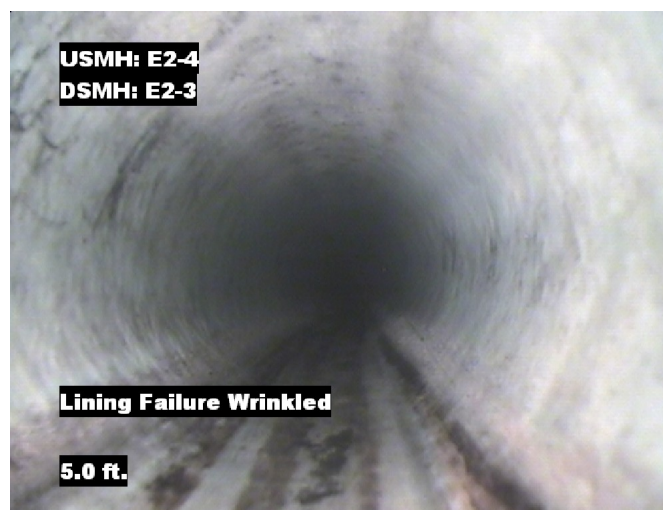
Distance: 0.0 ft. Grade: 0  
Condition: Access Point Manhole  
Remarks: E2-4



Distance: 0.0 ft. Grade: 0  
Condition: Water Level  
Remarks: N/A



Distance: 1.0 ft. Grade: 3  
Condition: Lining Failure Wrinkled  
Remarks: N/A

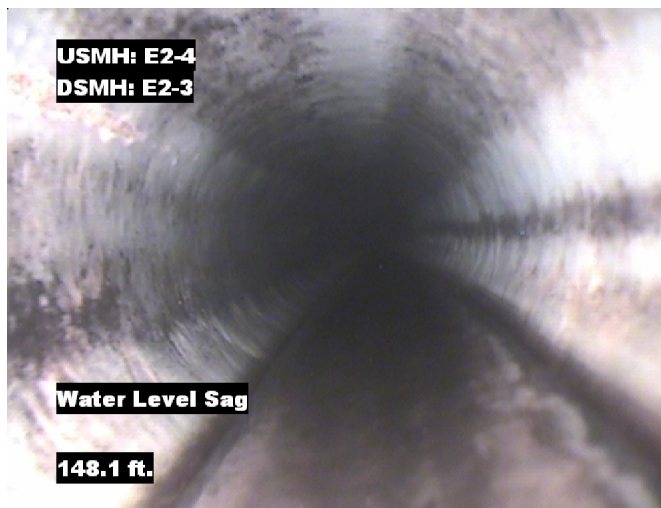


Distance: 5.0 ft. Grade: 3  
Condition: Lining Failure Wrinkled  
Remarks: N/A

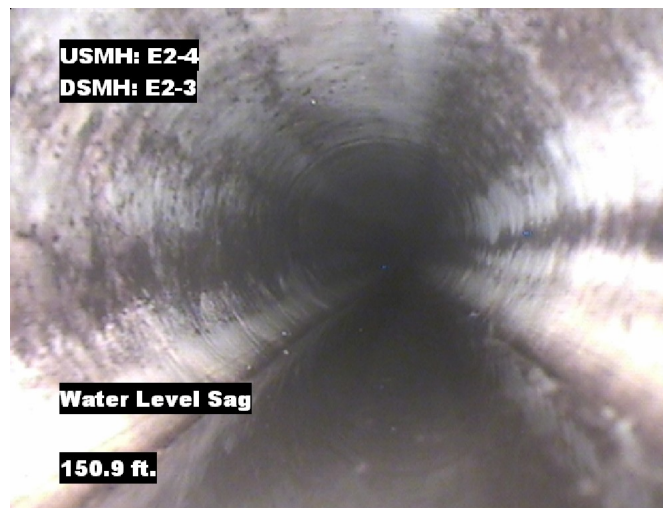


## Image Report 4/Page

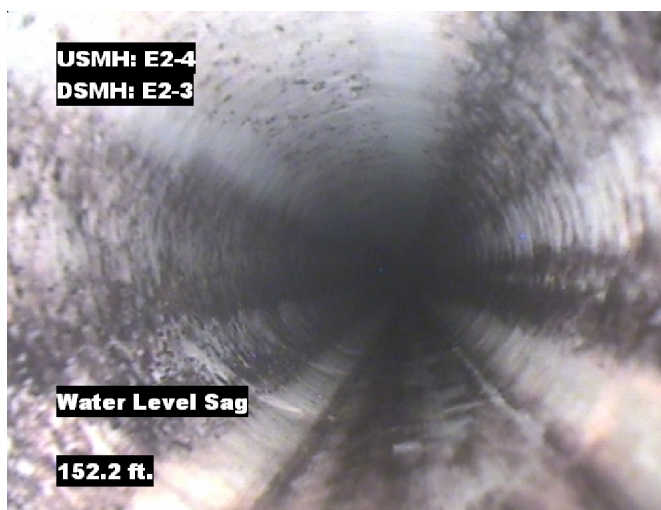
Pipe Segment Refere... <b>E2-4_E2-3</b>	City <b>Oliver Springs</b>	Street <b>HWY 62</b>	Material <b>Other</b>	Location C... <b>Main Highw...</b>	Sewer Use <b>Sanitary</b>
Upstream MH <b>E2-4</b>	Total Length <b>174.3</b>	Year Laid	Shape <b>Circular</b>	Location Details <b>usmh Located in woo...</b>	
DS Manhole <b>E2-3</b>	Length surveyed <b>174.3</b>	Year Renewed	Height <b>8</b>	Width <b>8</b>	Pipe Joint... <b>N/A</b>



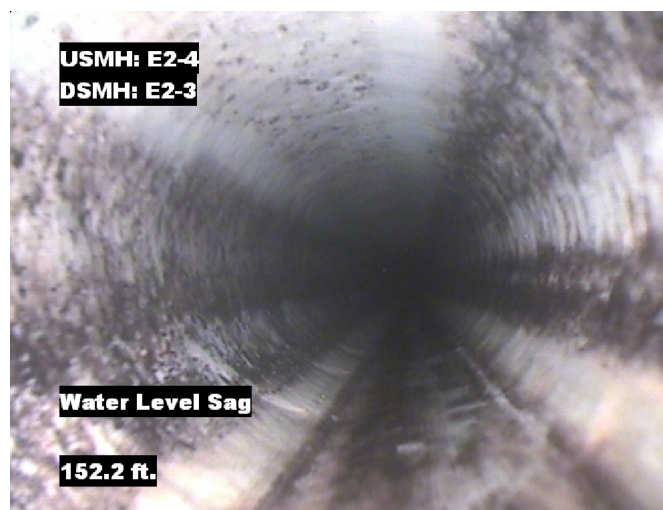
Distance: 148.1 ft. Grade: 2  
Condition: Water Level Sag  
Remarks: N/A



Distance: 150.9 ft. Grade: 2  
Condition: Water Level Sag  
Remarks: N/A



Distance: 152.2 ft. Grade: 2  
Condition: Water Level Sag  
Remarks: N/A



Distance: 152.2 ft. Grade: 2  
Condition: Water Level Sag  
Remarks: N/A





## Image Report 4/Page

Pipe Segment Refere... <b>E2-4_E2-3</b>	City <b>Oliver Springs</b>	Street <b>HWY 62</b>	Material <b>Other</b>	Location C... <b>Main Highw...</b>	Sewer Use <b>Sanitary</b>
Upstream MH <b>E2-4</b>	Total Length <b>174.3</b>	Year Laid	Shape <b>Circular</b>	Location Details <b>usmh Located in woo...</b>	
DS Manhole <b>E2-3</b>	Length surveyed <b>174.3</b>	Year Renewed	Height <b>8</b>	Width <b>8</b>	Pipe Joint... <b>N/A</b>



Distance: 173.1 ft.      Grade: 0  
Condition: Water Level  
Remarks: N/A



Distance: 174.3 ft.      Grade: 0  
Condition: Access Point Manhole  
Remarks: E2-3



## PACP Conditions

Pipe Segment Refere... <b>E2-4_E2-3</b>	City <b>Oliver Springs</b>	Street <b>HWY 62</b>	Material <b>Other</b>	Location C... <b>Main Highw...</b>	Sewer Use <b>Sanitary</b>
Upstream MH <b>E2-4</b>	Total Length <b>174.3</b>	Year Laid	Shape <b>Circular</b>	Location Details <b>usmh Located in woo...</b>	
DS Manhole <b>E2-3</b>	Length surveyed <b>174.3</b>	Year Renewed	Height <b>8</b>	Width <b>8</b>	Pipe Joint... <b>N/A</b>
SPR <b>3</b>	MPR <b>6</b>	PO Number <b>4397-03</b>		Customer <b>GRW</b>	
SPRI <b>3</b>	MPRI <b>2</b>	Work Order <b>4397-02</b>		Purpose <b>Pre-Rehabilitation Survey</b>	
QSR <b>3100</b>	QMR <b>2300</b>	Direction <b>Downstream</b>		Date <b>20150620</b>	Media label
OPR <b>9</b>	Surveyed By <b>David_brown</b>	Pre-Cleaning <b>Jetting</b>		Time <b>08:52</b>	Weather <b>Damp</b>
OPRI <b>2.3</b>	Certificate Number <b>U-607-5202</b>	Date Cleaned <b>20150620</b>		End Time <b>09:05</b>	Additional Info

Normal Defects			Structural Ratings			O & M Ratings			Combined Ratings		
			Grade Rating	No. Occur.	Rating	Grade Rating	No. Occur.	Rating	Grade Rating	No. Occur.	Rating
Continuous Defects			1	0	0	1	0	0	1	0	0
			2	0	0	2	2	4	2	2	4
			3	0	0	3	0	0	3	0	0
			4	0	0	4	0	0	4	0	0
			5	0	0	5	0	0	5	0	0
Code	ID	Length	3	1	3	0	0	0	3	1	3
LFW	F01	4.0									
MWLS	F02	4.1	0	0	0	2	1	2	2	1	2