



Defect Listing

Pipe Segment Refere... E18-1_E18-2	City Oliver Springs	Street 716 Sleepy Hollow	Material Concrete Pipe (non-...	Location C... Light High...	Sewer Use Sanitary
Upstream MH E18-1	Total Length 165.2	Year Laid	Shape Circular	Location Details Road	
DS Manhole E18-2	Length surveyed 165.2	Year Renewed	Height 8	Width 8	Pipe Joint... 4

SPR 1	MPR N/A	PO Number 4397-03	Customer GRW
SPRI 1	MPRI N/A	Work Order 4397-02	Purpose Pre-Rehabilitation Survey
QSR 1100	QMR N/A		
OPR 1	Surveyed By Barry Rogers	Direction Downstream	Date 20150608
OPRI 1	Certificate Number U-1012-16405	Pre-Cleaning Jetting	Time 10:50
	Date Cleaned 20150608	End Time 11:02	Weather Dry
			Media label
			Additional Info

Distance	Condition	Cont. Dfct.	Values			Joint	Clock Position		Grade
			1st	2nd	%		At/From	To	
0.0 ft.	Access Point Manhole				0	<input type="checkbox"/>			
Remarks: E18-1									
0.0 ft.	Water Level				0	<input type="checkbox"/>			
19.9 ft.	Joint Separated Medium				0	<input type="checkbox"/>			1
47.5 ft.	Tap Factory Made		6		0	<input type="checkbox"/>	2		
51.2 ft.	Tap Break-In		6		0	<input type="checkbox"/>	10		
119.5 ft.	Tap Break-In		6		0	<input type="checkbox"/>	2		
136.6 ft.	Tap Break-In		6		0	<input type="checkbox"/>	10		
164.1 ft.	Water Level				5	<input type="checkbox"/>			
165.2 ft.	Access Point Manhole				0	<input type="checkbox"/>			
Remarks: E18-2									



Image Report 4/Page

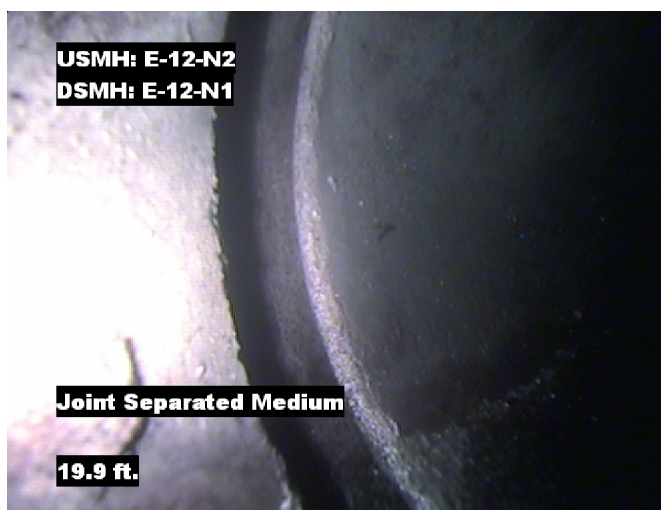
Pipe Segment Refere...	City	Street	Material	Location C...	Sewer Use
E18-1_E18-2	Oliver Springs	716 Sleepy Hollow	Concrete Pipe (non-...	Light High...	Sanitary
Upstream MH	Total Length	Year Laid	Shape	Location Details	
E18-1	165.2		Circular	Road	
DS Manhole	Length surveyed	Year Renewed	Height	Width	Pipe Joint...
E18-2	165.2		8	8	4



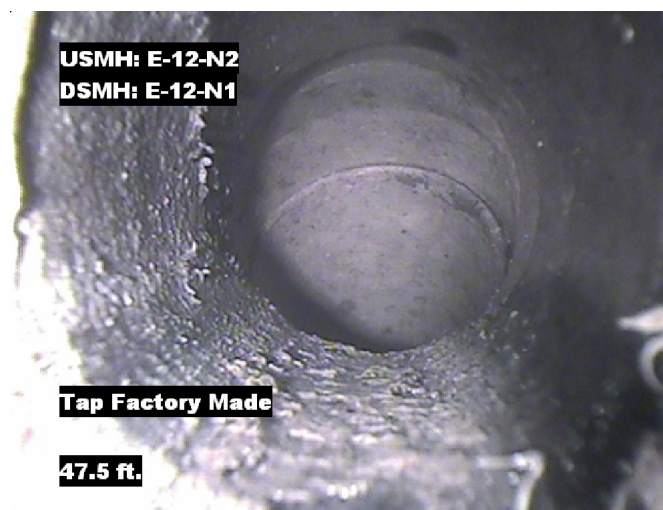
Distance: 0.0 ft. Grade: 0
Condition: Access Point Manhole
Remarks: E18-1



Distance: 0.0 ft. Grade: 0
Condition: Water Level
Remarks: N/A



Distance: 19.9 ft. Grade: 1
Condition: Joint Separated Medium
Remarks: N/A

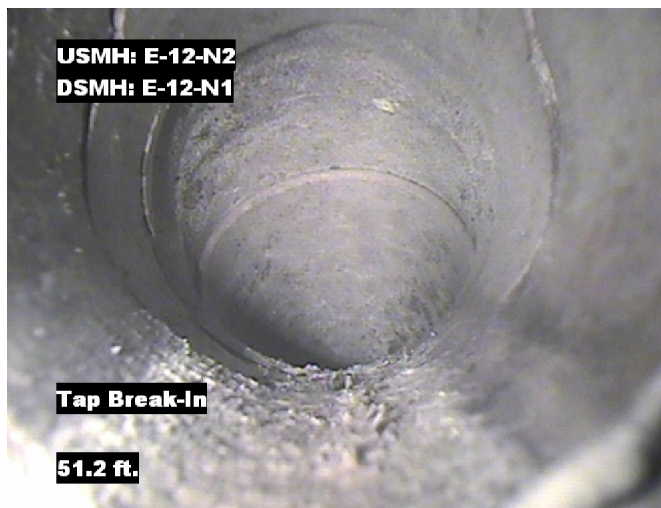


Distance: 47.5 ft. Grade: 0
Condition: Tap Factory Made
Remarks: N/A

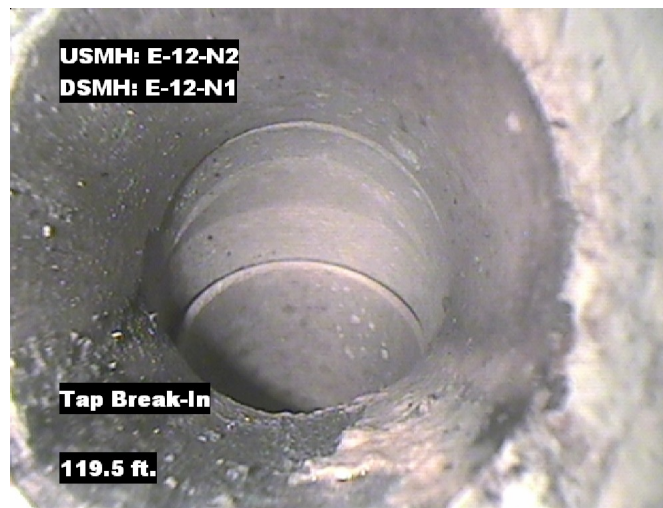


Image Report 4/Page

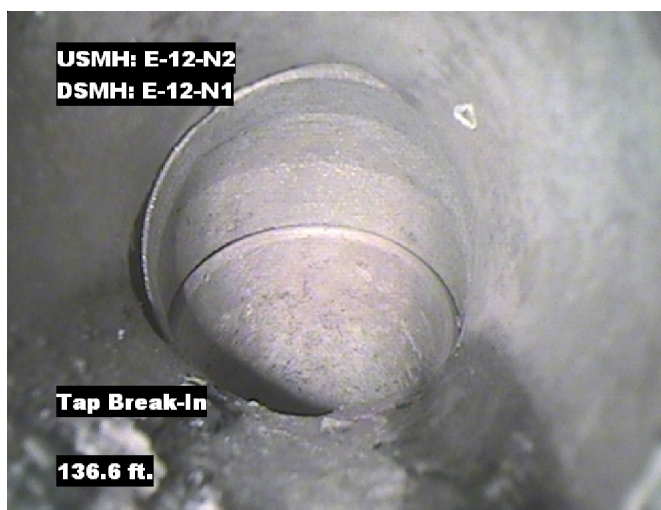
Pipe Segment Refere... E18-1_E18-2	City Oliver Springs	Street 716 Sleepy Hollow	Material Concrete Pipe (non-...		Location C... Light High...	Sewer Use Sanitary
Upstream MH E18-1	Total Length 165.2	Year Laid	Shape Circular		Location Details Road	
DS Manhole E18-2	Length surveyed 165.2	Year Renewed	Height 8	Width 8	Pipe Joint... 4	



Distance: 51.2 ft. Grade: 0
Condition: Tap Break-In
Remarks: N/A



Distance: 119.5 ft. Grade: 0
Condition: Tap Break-In
Remarks: N/A



Distance: 136.6 ft. Grade: 0
Condition: Tap Break-In
Remarks: N/A

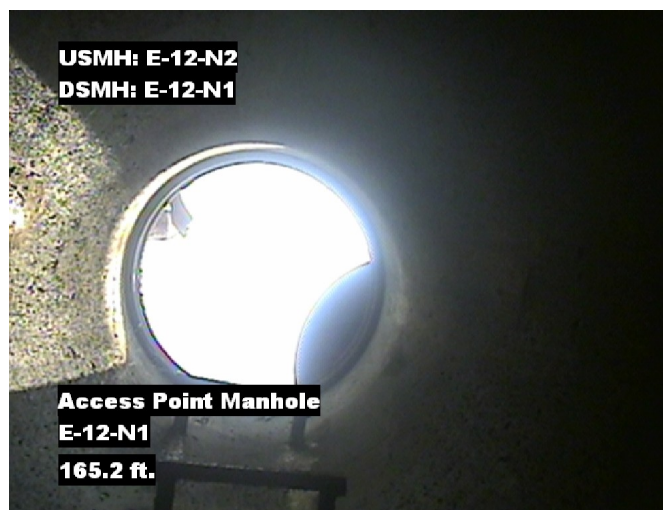


Distance: 164.1 ft. Grade: 0
Condition: Water Level
Remarks: N/A



Image Report 4/Page

Pipe Segment Refere... E18-1_E18-2	City Oliver Springs	Street 716 Sleepy Hollow	Material Concrete Pipe (non-...		Location C... Light High...	Sewer Use Sanitary
Upstream MH E18-1	Total Length 165.2	Year Laid	Shape Circular		Location Details Road	
DS Manhole E18-2	Length surveyed 165.2	Year Renewed	Height 8	Width 8	Pipe Joint... 4	



Distance: 165.2 ft. Grade: 0
Condition: Access Point Manhole
Remarks: E18-2



Pipe Segment Refere... E18-1_E18-2	City Oliver Springs	Street 716 Sleepy Hollow	Material Concrete Pipe (non-...		Location C... Light High...	Sewer Use Sanitary
Upstream MH E18-1	Total Length 165.2	Year Laid	Shape Circular		Location Details Road	
DS Manhole E18-2	Length surveyed 165.2	Year Renewed	Height 8	Width 8	Pipe Joint... 4	
SPR 1	MPR N/A	PO Number 4397-03		Customer GRW		
SPRI 1	MPRI N/A	Work Order 4397-02		Purpose Pre-Rehabilitation Survey		
QSR 1100	QMR N/A					
OPR 1	Surveyed By Barry_Rogers	Direction Downstream	Date 20150608		Media label	
OPRI 1	Certificate Number U-1012-16405	Pre-Cleaning Jetting	Time 10:50		Weather Dry	
Date Cleaned 20150608			End Time 11:02		Additional Info	

Page #: 5