



Defect Listing

Pipe Segment Refere... E13-8_E13-7	City Oliver Springs	Street Ray Drive	Material Concrete Pipe (non-...	Location C... Light High...	Sewer Use Sanitary
Upstream MH E13-8	Total Length 200.6	Year Laid	Shape Circular	Location Details Street	
DS Manhole E13-7	Length surveyed 200.6	Year Renewed	Height 8	Width 8	Pipe Joint... 4

SPR N/A	MPR N/A	PO Number 4397-03	Customer GRW
SPRI N/A	MPRI N/A	Work Order 4397-02	Purpose Pre-Rehabilitation Survey
QSR N/A	QMR N/A		
OPR N/A	Surveyed By Barry Rogers	Direction Downstream	Date 20150609
OPRI N/A	Certificate Number U-1012-16405	Pre-Cleaning Jetting	Time 07:23
	Date Cleaned 20150609	End Time 07:36	Weather Saturated
			Media label
			Additional Info

Distance	Condition	Cont. Dfct.	Values			Joint	Clock Position		Grade
			1st	2nd	%		At/From	To	
0.0 ft.	Access Point Manhole				0	<input type="checkbox"/>			
Remarks: E13-8									
0.0 ft.	Water Level				15	<input type="checkbox"/>			
28.7 ft.	Tap Factory Made		6		0	<input type="checkbox"/>	3		
110.2 ft.	Tap Factory Made		6		0	<input type="checkbox"/>	3		
113.3 ft.	Tap Factory Made		6		0	<input type="checkbox"/>	9		
198.4 ft.	Water Level				5	<input type="checkbox"/>			
200.6 ft.	Access Point Manhole				0	<input type="checkbox"/>			
Remarks: E13-7									

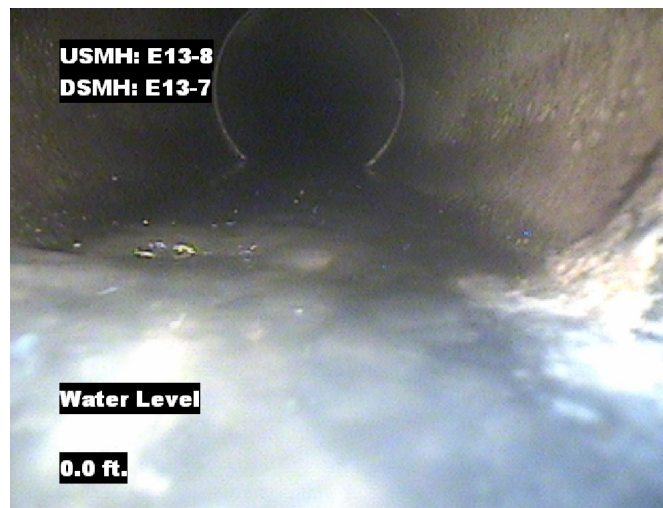


Image Report 4/Page

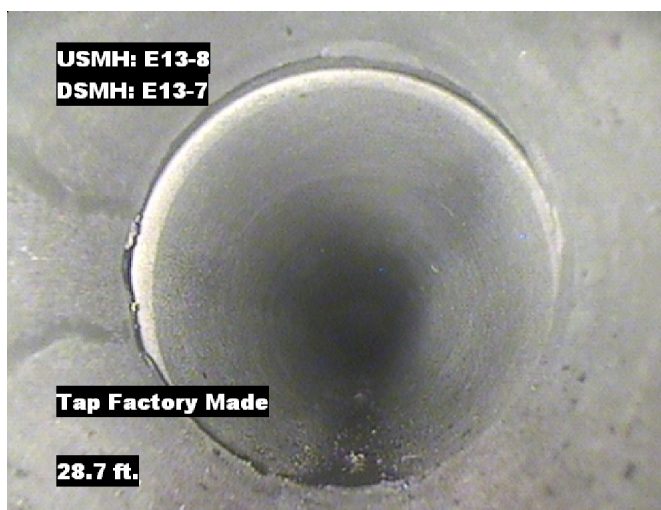
Pipe Segment Refere...	City	Street	Material	Location C...	Sewer Use
E13-8_E13-7	Oliver Springs	Ray Drive	Concrete Pipe (non-...	Light High...	Sanitary
Upstream MH	Total Length	Year Laid	Shape	Location Details	
E13-8	200.6		Circular	Street	
DS Manhole	Length surveyed	Year Renewed	Height	Width	Pipe Joint...
E13-7	200.6		8	8	4



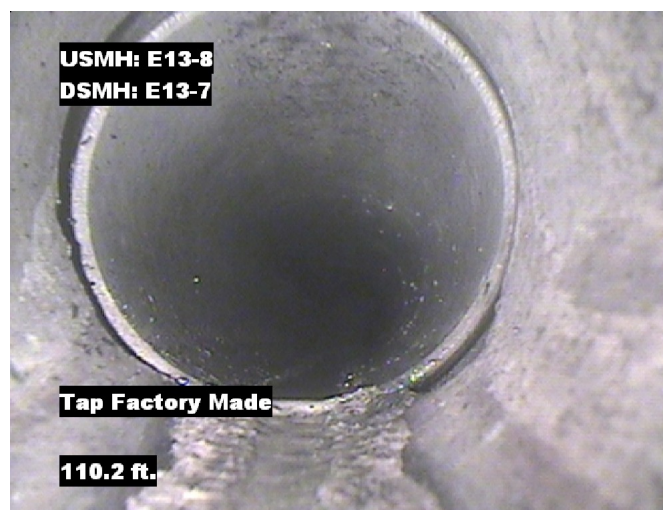
Distance: 0.0 ft. Grade: 0
Condition: Access Point Manhole
Remarks: E13-8



Distance: 0.0 ft. Grade: 0
Condition: Water Level
Remarks: N/A



Distance: 28.7 ft. Grade: 0
Condition: Tap Factory Made
Remarks: N/A

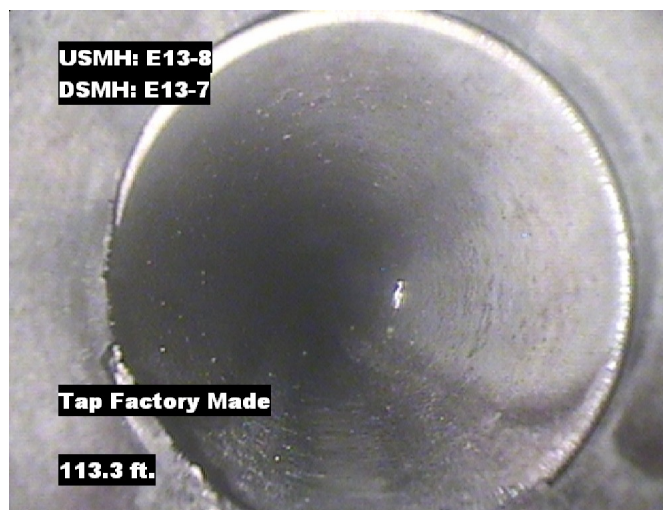


Distance: 110.2 ft. Grade: 0
Condition: Tap Factory Made
Remarks: N/A



Image Report 4/Page

Pipe Segment Refere...	City	Street	Material	Location C...	Sewer Use
E13-8_E13-7	Oliver Springs	Ray Drive	Concrete Pipe (non-...	Light High...	Sanitary
Upstream MH	Total Length	Year Laid	Shape	Location Details	
E13-8	200.6		Circular	Street	
DS Manhole	Length surveyed	Year Renewed	Height	Width	Pipe Joint...
E13-7	200.6		8	8	4



Distance: 113.3 ft. Grade: 0
Condition: Tap Factory Made
Remarks: N/A



Distance: 198.4 ft. Grade: 0
Condition: Water Level
Remarks: N/A



Distance: 200.6 ft. Grade: 0
Condition: Access Point Manhole
Remarks: E13-7



PACP Conditions

Pipe Segment Refere... E13-8_E13-7	City Oliver Springs	Street Ray Drive	Material Concrete Pipe (non-...		Location C... Light High...	Sewer Use Sanitary
Upstream MH E13-8	Total Length 200.6	Year Laid	Shape Circular		Location Details Street	
DS Manhole E13-7	Length surveyed 200.6	Year Renewed	Height 8	Width 8	Pipe Joint... 4	
SPR N/A	MPR N/A	PO Number 4397-03		Customer GRW		
SPRI N/A	MPRI N/A	Work Order 4397-02		Purpose Pre-Rehabilitation Survey		
QSR N/A	QMR N/A					
OPR N/A	Surveyed By Barry_Rogers	Direction Downstream	Date 20150609		Media label	
OPRI N/A	Certificate Number U-1012-16405	Pre-Cleaning Jetting	Time 07:23		Weather Saturated	
Date Cleaned 20150609			End Time 07:36		Additional Info	

			Structural Ratings			O & M Ratings			Combined Ratings		
			Grade Rating	No. Occur.	Rating	Grade Rating	No. Occur.	Rating	Grade Rating	No. Occur.	Rating
Normal Defects											
			1	0	0	1	0	0	1	0	0
			2	0	0	2	0	0	2	0	0
			3	0	0	3	0	0	3	0	0
			4	0	0	4	0	0	4	0	0
			5	0	0	5	0	0	5	0	0
Continuous Defects											
Code	ID	Length									