



Defect Listing

Pipe Segment Refere... E13-3_E13-2	City Oliver Springs	Street Oak Circle	Material Concrete Pipe (non-...	Location C... Light High...	Sewer Use Sanitary
Upstream MH E13-3	Total Length 229.8	Year Laid	Shape Circular	Location Details Street	
DS Manhole E13-2	Length surveyed 229.8	Year Renewed	Height 8	Width 8	Pipe Joint... 4

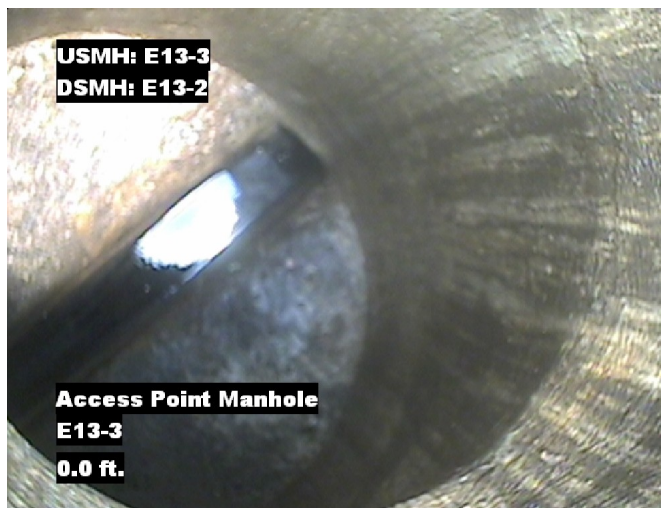
SPR 2	MPR 4	PO Number 4397-03		Customer GRW	
SPRI 2	MPRI 2	Work Order 4397-02		Purpose Pre-Rehabilitation Survey	
QSR 2100	QMR 2200				
OPR 6	Surveyed By Barry Rogers	Direction Downstream	Date 20150609	Media label	
OPRI 2	Certificate Number U-1012-16405	Pre-Cleaning Jetting	Time 12:59	Weather Dry	
Date Cleaned 20150609			End Time 13:18	Additional Info	

Distance	Condition	Cont. Dfct.	Values			Joint	Clock Position		Grade
			1st	2nd	%		At/From	To	
0.0 ft.	Access Point Manhole				0	<input type="checkbox"/>			
Remarks: E13-3									
0.0 ft.	Water Level				5	<input type="checkbox"/>			
8.2 ft.	Tap Break-In		6		0	<input type="checkbox"/>	3		
18.4 ft.	Tap Break-In		6		0	<input type="checkbox"/>	9		
26.5 ft.	Tap Factory Made		6		0	<input type="checkbox"/>	3		
49.4 ft.	Tap Factory Made		6		0	<input type="checkbox"/>	3		
152.8 ft.	Tap Factory Made		6		0	<input type="checkbox"/>	9		
202.3 ft.	Water Level Sag	S01			20	<input type="checkbox"/>			2
210.1 ft.	Water Level Sag	F01			20	<input type="checkbox"/>			2
216.0 ft.	Tap Factory Made		6		0	<input type="checkbox"/>	9		
227.6 ft.	Joint Separated Large		6	3	0	<input type="checkbox"/>			2
229.8 ft.	Water Level				5	<input type="checkbox"/>			
229.8 ft.	Access Point Manhole				0	<input type="checkbox"/>			
Remarks: E13-2									

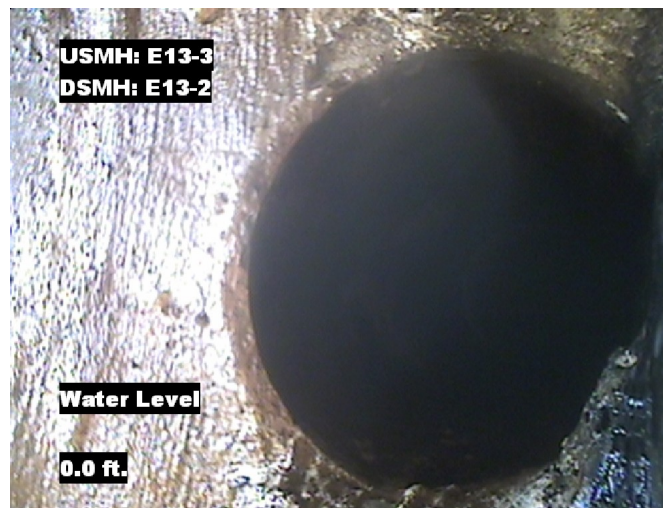


Image Report 4/Page

Pipe Segment Refere...	City	Street	Material	Location C...	Sewer Use
E13-3_E13-2	Oliver Springs	Oak Circle	Concrete Pipe (non-...	Light High...	Sanitary
Upstream MH	Total Length	Year Laid	Shape	Location Details	
E13-3	229.8		Circular	Street	
DS Manhole	Length surveyed	Year Renewed	Height	Width	Pipe Joint...
E13-2	229.8		8	8	4



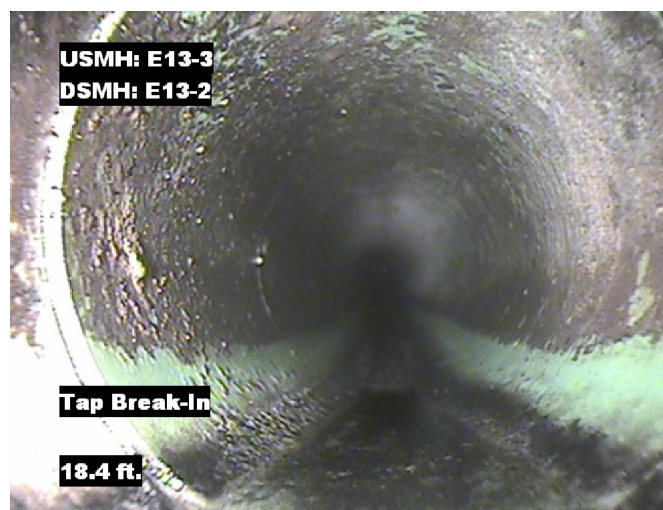
Distance: 0.0 ft. Grade: 0
Condition: Access Point Manhole
Remarks: E13-3



Distance: 0.0 ft. Grade: 0
Condition: Water Level
Remarks: N/A



Distance: 8.2 ft. Grade: 0
Condition: Tap Break-In
Remarks: N/A

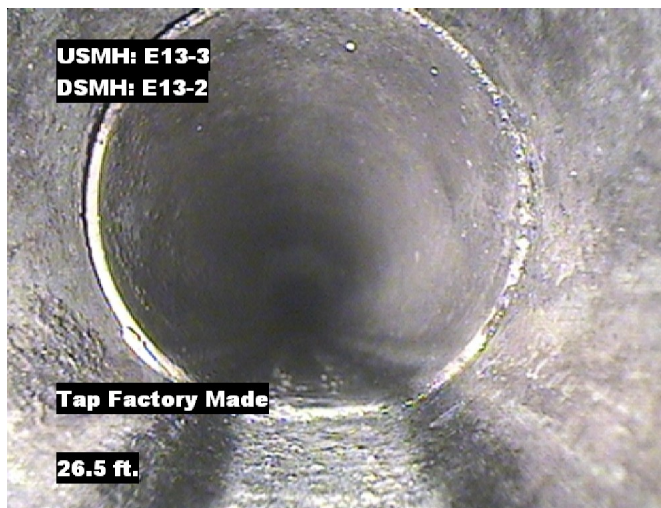


Distance: 18.4 ft. Grade: 0
Condition: Tap Break-In
Remarks: N/A

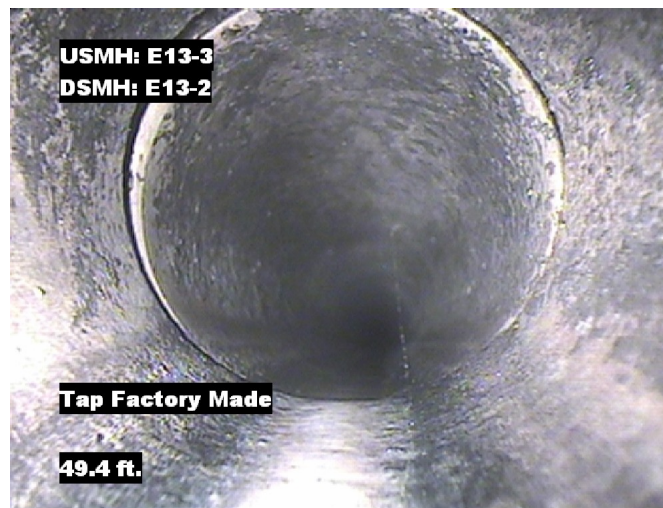


Image Report 4/Page

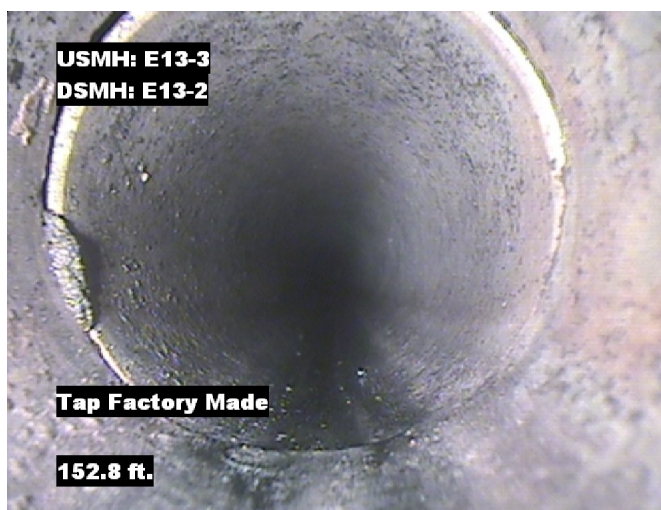
Pipe Segment Refere...	City	Street	Material	Location C...	Sewer Use
E13-3_E13-2	Oliver Springs	Oak Circle	Concrete Pipe (non-...	Light High...	Sanitary
Upstream MH	Total Length	Year Laid	Shape	Location Details	
E13-3	229.8		Circular	Street	
DS Manhole	Length surveyed	Year Renewed	Height	Width	Pipe Joint...
E13-2	229.8		8	8	4



Distance: 26.5 ft. Grade: 0
Condition: Tap Factory Made
Remarks: N/A



Distance: 49.4 ft. Grade: 0
Condition: Tap Factory Made
Remarks: N/A



Distance: 152.8 ft. Grade: 0
Condition: Tap Factory Made
Remarks: N/A



Distance: 202.3 ft. Grade: 2
Condition: Water Level Sag
Remarks: N/A

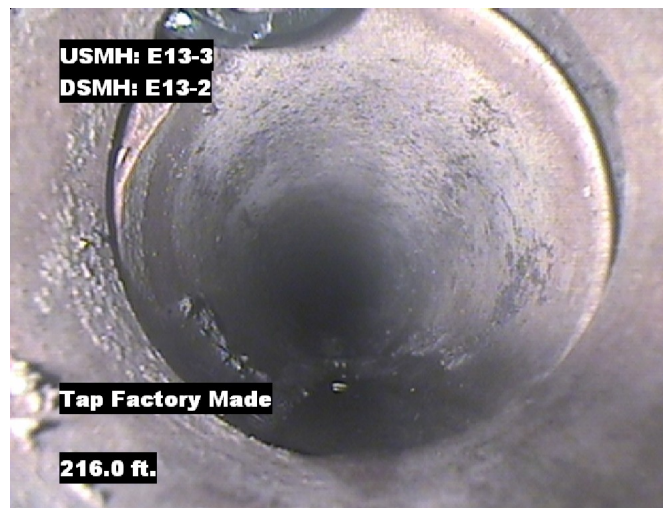


Image Report 4/Page

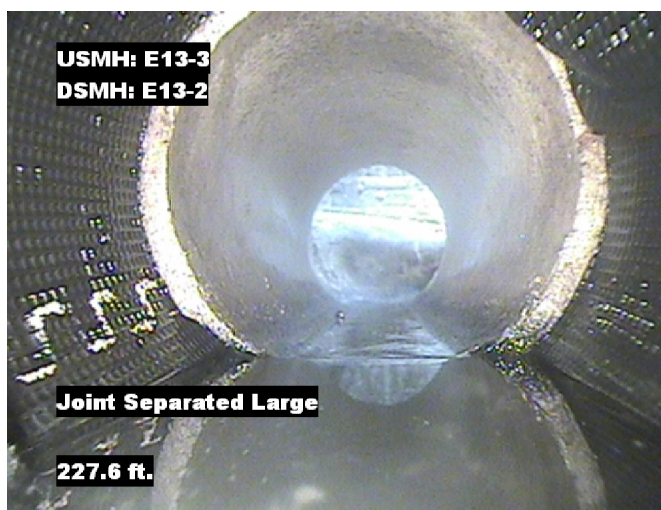
Pipe Segment Refere...	City	Street	Material	Location C...	Sewer Use
E13-3_E13-2	Oliver Springs	Oak Circle	Concrete Pipe (non-...	Light High...	Sanitary
Upstream MH	Total Length	Year Laid	Shape	Location Details	
E13-3	229.8		Circular	Street	
DS Manhole	Length surveyed	Year Renewed	Height	Width	Pipe Joint...
E13-2	229.8		8	8	4



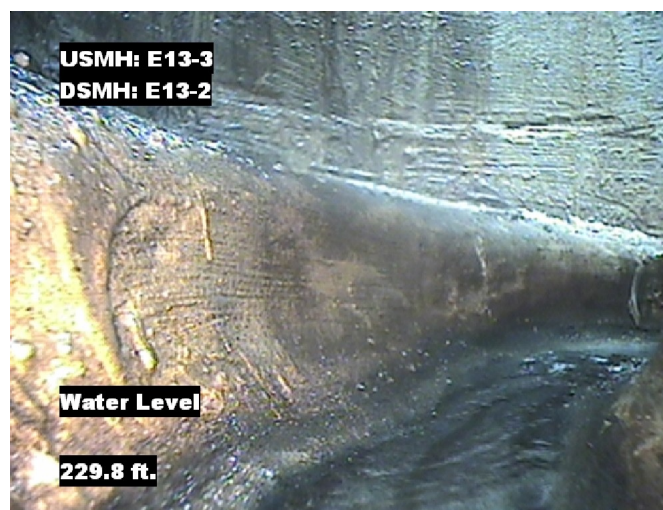
Distance: 210.1 ft. Grade: 2
Condition: Water Level Sag
Remarks: N/A



Distance: 216.0 ft. Grade: 0
Condition: Tap Factory Made
Remarks: N/A



Distance: 227.6 ft. Grade: 2
Condition: Joint Separated Large
Remarks: N/A

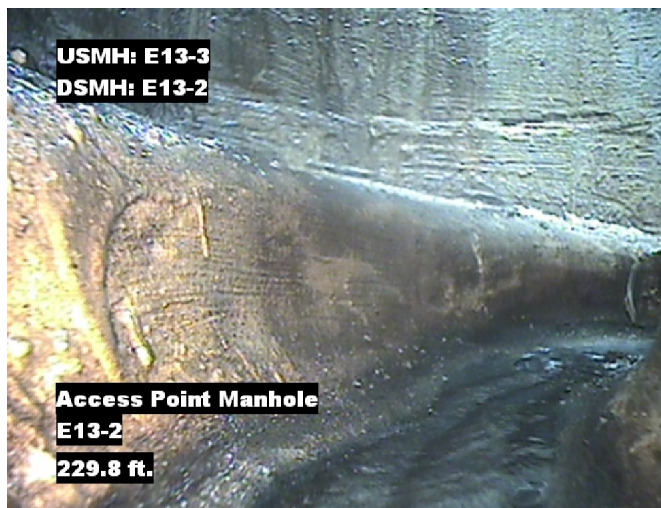


Distance: 229.8 ft. Grade: 0
Condition: Water Level
Remarks: N/A



Image Report 4/Page

Pipe Segment Refere... E13-3_E13-2	City Oliver Springs	Street Oak Circle	Material Concrete Pipe (non-...		Location C... Light High...	Sewer Use Sanitary
Upstream MH E13-3	Total Length 229.8	Year Laid	Shape Circular		Location Details Street	
DS Manhole E13-2	Length surveyed 229.8	Year Renewed	Height 8	Width 8	Pipe Joint... 4	



Distance: 229.8 ft. Grade: 0
Condition: Access Point Manhole
Remarks: E13-2



PACP Conditions

Pipe Segment Refere... E13-3_E13-2	City Oliver Springs	Street Oak Circle	Material Concrete Pipe (non-...	Location C... Light High...	Sewer Use Sanitary
Upstream MH E13-3	Total Length 229.8	Year Laid	Shape Circular	Location Details Street	
DS Manhole E13-2	Length surveyed 229.8	Year Renewed	Height 8	Width 8	Pipe Joint... 4
SPR 2	MPR 4	PO Number 4397-03		Customer GRW	
SPRI 2	MPRI 2	Work Order 4397-02		Purpose Pre-Rehabilitation Survey	
QSR 2100	QMR 2200	Direction Downstream		Date 20150609	Media label
OPR 6	Surveyed By Barry Rogers	Pre-Cleaning Jetting		Time 12:59	Weather Dry
OPRI 2	Certificate Number U-1012-16405	Date Cleaned 20150609		End Time 13:18	Additional Info

Normal Defects			Structural Ratings			O & M Ratings			Combined Ratings		
			Grade Rating	No. Occur.	Rating	Grade Rating	No. Occur.	Rating	Grade Rating	No. Occur.	Rating
Continuous Defects			1	0	0	1	0	0	1	0	0
			2	1	2	2	0	0	2	1	2
			3	0	0	3	0	0	3	0	0
			4	0	0	4	0	0	4	0	0
			5	0	0	5	0	0	5	0	0
Code	ID	Length	0	0	0	2	2	4	2	2	4
MWLS	F01	7.8									
</											