



Defect Listing

Pipe Segment Refere... E10-2_E10-1	City Oliver Springs	Street Sturbridge Dr	Material PolyVinyl Chloride		Location C... Light High...	Sewer Use Sanitary
Upstream MH E10-2	Total Length 97.1	Year Laid	Shape Circular		Location Details New Subdivision	
DS Manhole E10-1	Length surveyed 97.1	Year Renewed	Height 8	Width 8	Pipe Joint... 13	

SPR N/A	MPR N/A	PO Number 4397-03		Customer GRW	
SPRI N/A	MPRI N/A	Work Order 4397-02		Purpose Pre-Rehabilitation Survey	
QSR N/A	QMR N/A				
OPR N/A	Surveyed By Barry Rogers	Direction Downstream	Date 20150617		Media label
OPRI N/A	Certificate Number U-1012-16405	Pre-Cleaning Jetting	Time 10:50		Weather Very Dry
Date Cleaned 20150617			End Time 10:57		Additional Info

Distance	Condition	Cont. Dfct.	Values			Joint	Clock Position		Grade
			1st	2nd	%		At/From	To	
0.0 ft.	Access Point Manhole				0	<input type="checkbox"/>			
Remarks: E10-2									
0.0 ft.	Water Level				0	<input type="checkbox"/>			
6.0 ft.	Tap Factory Made		6		0	<input type="checkbox"/>	9		
40.2 ft.	Tap Factory Made		6		0	<input type="checkbox"/>	9		
71.5 ft.	Tap Factory Made		6		0	<input type="checkbox"/>	9		
95.6 ft.	Water Level				0	<input type="checkbox"/>			
97.1 ft.	Access Point Manhole				0	<input type="checkbox"/>			
Remarks: E10-1									

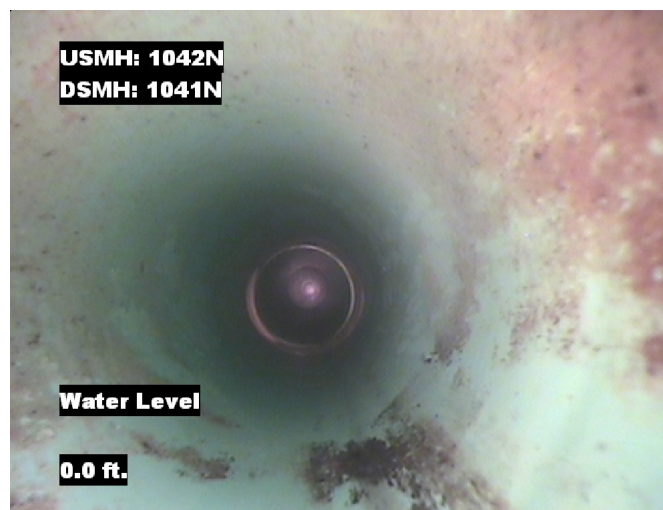


Image Report 4/Page

Pipe Segment Refere...	City	Street	Material	Location C...	Sewer Use
E10-2_E10-1	Oliver Springs	Sturbridge Dr	PolyVinyl Chloride	Light High...	Sanitary
Upstream MH	Total Length	Year Laid	Shape	Location Details	
E10-2	97.1		Circular	New Subdivision	
DS Manhole	Length surveyed	Year Renewed	Height	Width	Pipe Joint...
E10-1	97.1		8	8	13



Distance: 0.0 ft. Grade: 0
Condition: Access Point Manhole
Remarks: E10-2



Distance: 0.0 ft. Grade: 0
Condition: Water Level
Remarks: N/A



Distance: 6.0 ft. Grade: 0
Condition: Tap Factory Made
Remarks: N/A

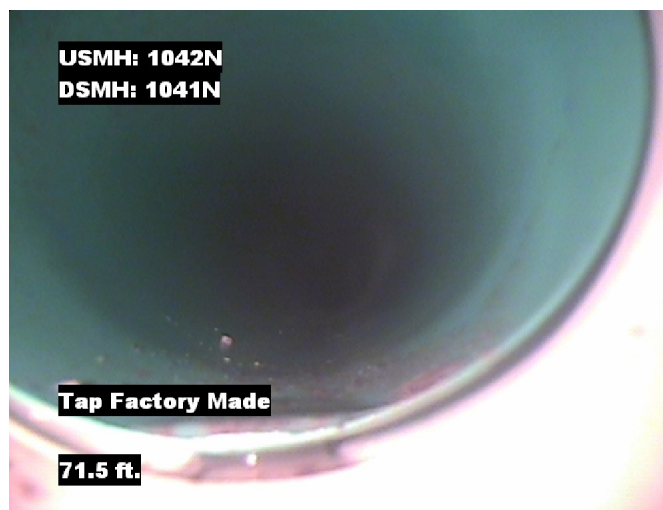


Distance: 40.2 ft. Grade: 0
Condition: Tap Factory Made
Remarks: N/A

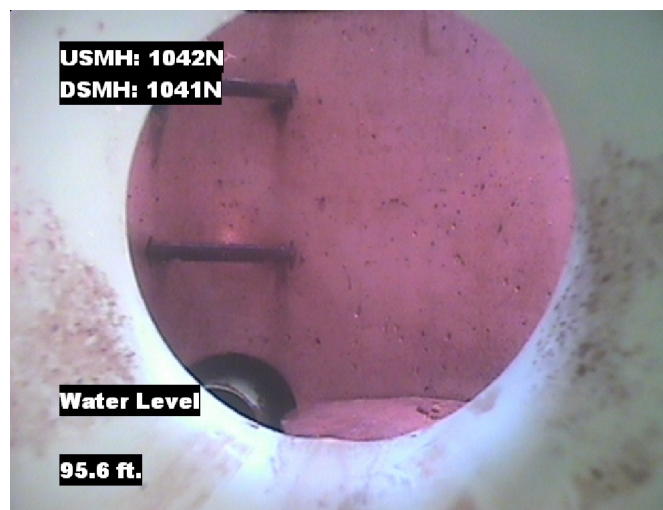


Image Report 4/Page

Pipe Segment Refere... E10-2_E10-1	City Oliver Springs	Street Sturbridge Dr	Material PolyVinyl Chloride		Location C... Light High...	Sewer Use Sanitary
Upstream MH E10-2	Total Length 97.1	Year Laid	Shape Circular		Location Details New Subdivision	
DS Manhole E10-1	Length surveyed 97.1	Year Renewed	Height 8	Width 8	Pipe Joint... 13	



Distance: 71.5 ft. Grade: 0
Condition: Tap Factory Made
Remarks: N/A



Distance: 95.6 ft. Grade: 0
Condition: Water Level
Remarks: N/A



Distance: 97.1 ft. Grade: 0
Condition: Access Point Manhole
Remarks: E10-1



Pipe Segment Refere... E10-2_E10-1	City Oliver Springs	Street Sturbridge Dr	Material PolyVinyl Chloride		Location C... Light High...	Sewer Use Sanitary
Upstream MH E10-2	Total Length 97.1	Year Laid	Shape Circular		Location Details New Subdivision	
DS Manhole E10-1	Length surveyed 97.1	Year Renewed	Height 8	Width 8	Pipe Joint... 13	
SPR N/A	MPR N/A	PO Number 4397-03			Customer GRW	
SPRI N/A	MPRI N/A	Work Order 4397-02			Purpose	
QSR N/A	QMR N/A				Pre-Rehabilitation Survey	
OPR N/A	Surveyed By Barry_Rogers	Direction Downstream	Date 20150617		Media label	
OPRI N/A	Certificate Number U-1012-16405	Pre-Cleaning Jetting	Time 10:50		Weather Very Dry	
Date Cleaned 20150617			End Time 10:57		Additional Info	

Page #: 4