



Defect Listing

Pipe Segment Refere... E1-6EOL_E1-6	City Oliver Springs	Street HWY 62	Material PolyVinyl Chloride	Location C... Yard	Sewer Use Sanitary
Upstream MH E1-6EOL	Total Length 404.2	Year Laid	Shape Circular	Location Details	
DS Manhole E1-6	Length surveyed 404.2	Year Renewed	Height 8	Width 8	Pipe Joint... 13

SPR N/A	MPR 25	PO Number 4397-03	Customer GRW
SPRI N/A	MPRI 2.1	Work Order 4397-02	Purpose Pre-Rehabilitation Survey
QSR N/A	QMR 312A		
OPR 25	Surveyed By David_brown	Direction Upstream	Date 20150620
OPRI 2.1	Certificate Number U-607-5202	Pre-Cleaning Jetting	Time 13:30
	Date Cleaned 20150620	End Time 13:55	Weather Saturated
		Additional Info UNMAPPED LINE/ line...	

Distance	Condition	Cont. Dfct.	Values			Joint	Clock Position		Grade
			1st	2nd	%		At/From	To	
0.0 ft.	Access Point Manhole				0	<input type="checkbox"/>			
Remarks: E1-6									
0.0 ft.	Water Level				5	<input type="checkbox"/>			
275.4 ft.	Water Level Sag				20	<input type="checkbox"/>			2
279.1 ft.	Water Level Sag				10	<input type="checkbox"/>			2
314.9 ft.	Tap Factory Made Capped		6		0	<input checked="" type="checkbox"/>	3		
323.5 ft.	Water Level Sag	S01			20	<input type="checkbox"/>			2
350.5 ft.	Water Level Sag	F01			20	<input type="checkbox"/>			2
354.5 ft.	Water Level Sag				5	<input type="checkbox"/>			2
373.2 ft.	Water Level Sag	S02			25	<input type="checkbox"/>			2
375.7 ft.	Water Level Sag				40	<input type="checkbox"/>			3
381.1 ft.	Water Level Sag	F02			25	<input type="checkbox"/>			2
388.5 ft.	Water Level Sag				10	<input type="checkbox"/>			2
404.2 ft.	Survey Abandoned				0	<input type="checkbox"/>			
Remarks: Unmapped line camera can not continue upstream									



Image Report 4/Page

Pipe Segment Refere... E1-6EOL_E1-6	City Oliver Springs	Street HWY 62	Material PolyVinyl Chloride		Location C... Yard	Sewer Use Sanitary
Upstream MH E1-6EOL	Total Length 404.2	Year Laid	Shape Circular		Location Details	
DS Manhole E1-6	Length surveyed 404.2	Year Renewed	Height 8	Width 8	Pipe Joint...	



Distance: 0.0 ft. Grade: 0
Condition: Access Point Manhole
Remarks: E1-6



Distance: 0.0 ft. Grade: 0
Condition: Water Level
Remarks: N/A



Distance: 275.4 ft. Grade: 2
Condition: Water Level Sag
Remarks: N/A



Distance: 279.1 ft. Grade: 2
Condition: Water Level Sag
Remarks: N/A



Image Report 4/Page

Pipe Segment Refere...	City	Street	Material	Location C...	Sewer Use
E1-6EOL_E1-6	Oliver Springs	HWY 62	PolyVinyl Chloride	Yard	Sanitary
Upstream MH	Total Length	Year Laid	Shape	Location Details	
E1-6EOL	404.2		Circular		
DS Manhole	Length surveyed	Year Renewed	Height	Width	Pipe Joint...
E1-6	404.2		8	8	13



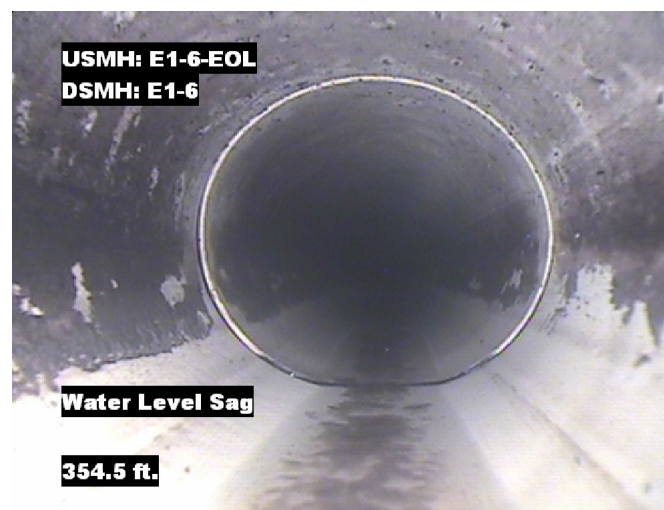
Distance: 314.9 ft. Grade: 0
Condition: Tap Factory Made Capped
Remarks: N/A



Distance: 323.5 ft. Grade: 2
Condition: Water Level Sag
Remarks: N/A



Distance: 350.5 ft. Grade: 2
Condition: Water Level Sag
Remarks: N/A



Distance: 354.5 ft. Grade: 2
Condition: Water Level Sag
Remarks: N/A



Image Report 4/Page

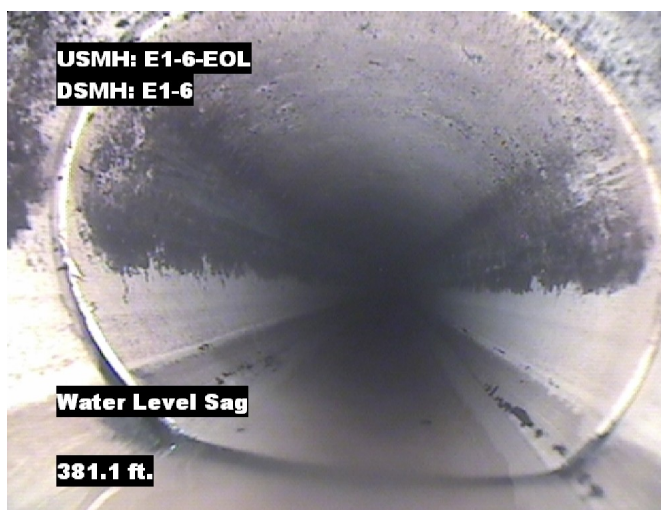
Pipe Segment Refere...	City	Street	Material	Location C...	Sewer Use
E1-6EOL_E1-6	Oliver Springs	HWY 62	PolyVinyl Chloride	Yard	Sanitary
Upstream MH E1-6EOL	Total Length 404.2	Year Laid	Shape Circular	Location Details	
DS Manhole E1-6	Length surveyed 404.2	Year Renewed	Height 8	Width 8	Pipe Joint... 13



Distance: 373.2 ft. Grade: 2
Condition: Water Level Sag
Remarks: N/A



Distance: 375.7 ft. Grade: 3
Condition: Water Level Sag
Remarks: N/A



Distance: 381.1 ft. Grade: 2
Condition: Water Level Sag
Remarks: N/A

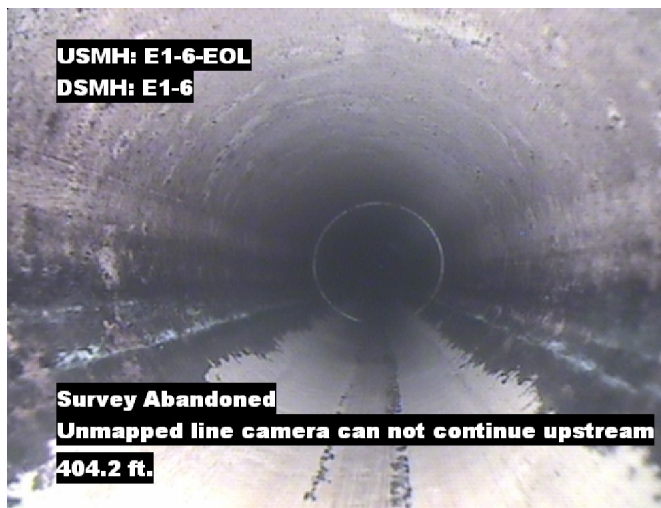


Distance: 388.5 ft. Grade: 2
Condition: Water Level Sag
Remarks: N/A



Image Report 4/Page

Pipe Segment Refere...	City	Street	Material	Location C...	Sewer Use
E1-6EOL_E1-6	Oliver Springs	HWY 62	PolyVinyl Chloride	Yard	Sanitary
Upstream MH E1-6EOL	Total Length 404.2	Year Laid	Shape Circular	Location Details	
DS Manhole E1-6	Length surveyed 404.2	Year Renewed	Height 8	Width 8	Pipe Joint... 13



Distance: 404.2 ft. Grade: 0
Condition: Survey Abandoned
Remarks: Unmapped line camera can not continue upstream



PACP Conditions

Pipe Segment Refere... E1-6EOL_E1-6	City Oliver Springs	Street HWY 62	Material PolyVinyl Chloride	Location C... Yard	Sewer Use Sanitary
Upstream MH E1-6EOL	Total Length 404.2	Year Laid	Shape Circular	Location Details	
DS Manhole E1-6	Length surveyed 404.2	Year Renewed	Height 8	Width 8	Pipe Joint... 13
SPR N/A	MPR 25	PO Number 4397-03		Customer GRW	
SPRI N/A	MPRI 2.1	Work Order 4397-02		Purpose Pre-Rehabilitation Survey	
QSR N/A	QMR 312A	Direction Upstream		Date 20150620	
OPR 25	Surveyed By David_brown	Pre-Cleaning Jetting		Media label	
OPRI 2.1	Certificate Number U-607-5202	Time 13:30		Weather Saturated	
Date Cleaned 20150620			End Time 13:55		Additional Info UNMAPPED LINE/ line...

Normal Defects			Structural Ratings			O & M Ratings			Combined Ratings		
			Grade Rating	No. Occur.	Rating	Grade Rating	No. Occur.	Rating	Grade Rating	No. Occur.	Rating
Continuous Defects			1	0	0	1	0	0	1	0	0
			2	0	0	2	4	8	2	4	8
			3	0	0	3	1	3	3	1	3
			4	0	0	4	0	0	4	0	0
			5	0	0	5	0	0	5	0	0
Code	ID	Length	0	0	0	2	5	10	2	5	10
MWLS	F01	27.0									
MWLS	F02	7.9									
			0	0	0	2	2	4	2	2	4