



Defect Listing

Pipe Segment Refere... E1-6_E1-5	City Oliver Springs	Street Hwy 62	Material PolyVinyl Chloride	Location C... Yard	Sewer Use Sanitary
Upstream MH E1-6	Total Length 354.9	Year Laid	Shape Circular	Location Details usmh located in hea...	
DS Manhole E1-5	Length surveyed 354.9	Year Renewed	Height 8	Width 8	Pipe Joint... 13

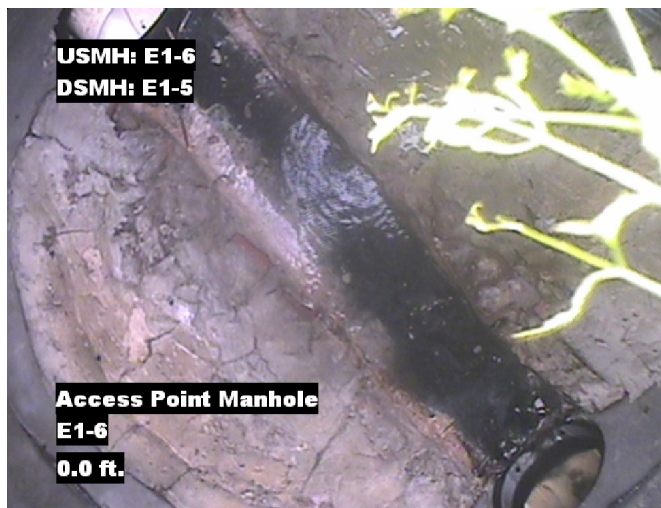
SPR N/A	MPR 31	PO Number 4397-03		Customer GRW	
SPRI N/A	MPRI 2.2	Work Order 4397-02		Purpose Pre-Rehabilitation Survey	
QSR N/A	QMR 4131				
OPR 31	Surveyed By David_brown	Direction Downstream	Date 20150620	Media label	
OPRI 2.2	Certificate Number U-607-5202	Pre-Cleaning Jetting	Time 12:56	Weather Saturated	
Date Cleaned 20150620			End Time 13:04	Additional Info map was off observa...	

Distance	Condition	Cont. Dfct.	Values			Joint	Clock Position		Grade
			1st	2nd	%		At/From	To	
0.0 ft.	Access Point Manhole				0	<input type="checkbox"/>			
Remarks: E1-6									
0.0 ft.	Water Level				30	<input type="checkbox"/>			
2.0 ft.	Water Level Sag				45	<input type="checkbox"/>			3
6.1 ft.	Water Level Sag				25	<input type="checkbox"/>			2
9.9 ft.	Water Level Sag				5	<input type="checkbox"/>			2
22.1 ft.	Water Level				15	<input type="checkbox"/>			
31.1 ft.	Water Level				5	<input type="checkbox"/>			
54.3 ft.	Water Level Sag	S01			15	<input type="checkbox"/>			2
59.0 ft.	Water Level Sag	F01			15	<input type="checkbox"/>			2
62.1 ft.	Water Level Sag				5	<input type="checkbox"/>			2
86.9 ft.	Water Level Sag	S02			15	<input type="checkbox"/>			2
96.6 ft.	Water Level Sag	F02			15	<input type="checkbox"/>			2
98.0 ft.	Water Level Sag				5	<input type="checkbox"/>			2
149.5 ft.	Tap Factory Made Capped		6		0	<input checked="" type="checkbox"/>	9		
151.3 ft.	Tap Factory Made Active		6		0	<input type="checkbox"/>	9		
155.0 ft.	Infiltration Runner				0	<input checked="" type="checkbox"/>	4	5	4
187.3 ft.	Water Level Sag	S03			15	<input type="checkbox"/>			2
193.9 ft.	Water Level Sag	F03			15	<input type="checkbox"/>			2
194.6 ft.	Water Level Sag				5	<input type="checkbox"/>			2
200.3 ft.	Water Level Sag	S04			15	<input type="checkbox"/>			2
204.0 ft.	Water Level Sag				30	<input type="checkbox"/>			2
207.5 ft.	General Observation				0	<input type="checkbox"/>			
Remarks: Line has been cleaned again									
207.9 ft.	Water Level Sag	F04			15	<input type="checkbox"/>			2
270.7 ft.	Tap Break-In		6		0	<input type="checkbox"/>	9		
353.9 ft.	Water Level				5	<input type="checkbox"/>			
354.9 ft.	Access Point Manhole				0	<input type="checkbox"/>			
Remarks: e1-5									

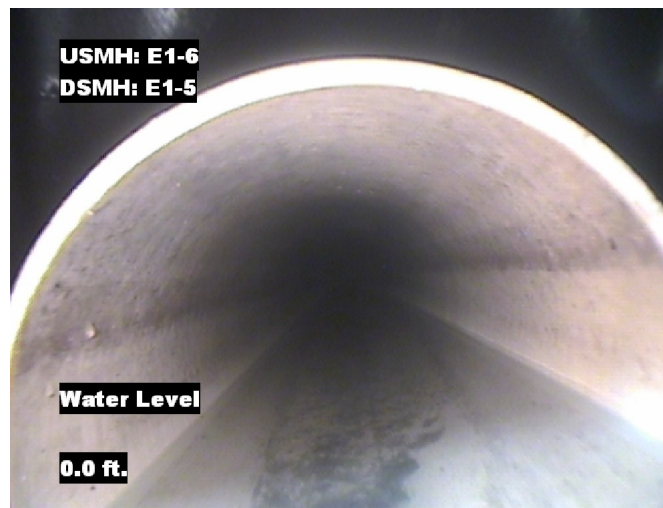


Image Report 4/Page

Pipe Segment Refere... E1-6_E1-5	City Oliver Springs	Street Hwy 62	Material PolyVinyl Chloride		Location C... Yard	Sewer Use Sanitary
Upstream MH E1-6	Total Length 354.9	Year Laid	Shape Circular		Location Details usmh located in hea...	
DS Manhole E1-5	Length surveyed 354.9	Year Renewed	Height 8	Width 8	Pipe Joint...	



Distance: 0.0 ft. Grade: 0
Condition: Access Point Manhole
Remarks: E1-6



Distance: 0.0 ft. Grade: 0
Condition: Water Level
Remarks: N/A



Distance: 2.0 ft. Grade: 3
Condition: Water Level Sag
Remarks: N/A



Distance: 6.1 ft. Grade: 2
Condition: Water Level Sag
Remarks: N/A



Image Report 4/Page

Pipe Segment Refere... E1-6_E1-5	City Oliver Springs	Street Hwy 62	Material PolyVinyl Chloride		Location C... Yard	Sewer Use Sanitary
Upstream MH E1-6	Total Length 354.9	Year Laid	Shape Circular		Location Details usmh located in hea...	
DS Manhole E1-5	Length surveyed 354.9	Year Renewed	Height 8	Width 8	Pipe Joint...	13



Distance: 9.9 ft. Grade: 2
Condition: Water Level Sag
Remarks: N/A



Distance: 22.1 ft. Grade: 0
Condition: Water Level
Remarks: N/A



Distance: 31.1 ft. Grade: 0
Condition: Water Level
Remarks: N/A

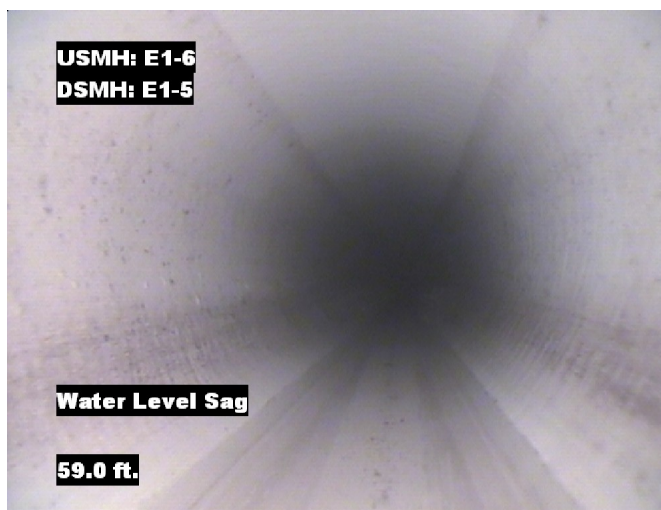


Distance: 54.3 ft. Grade: 2
Condition: Water Level Sag
Remarks: N/A

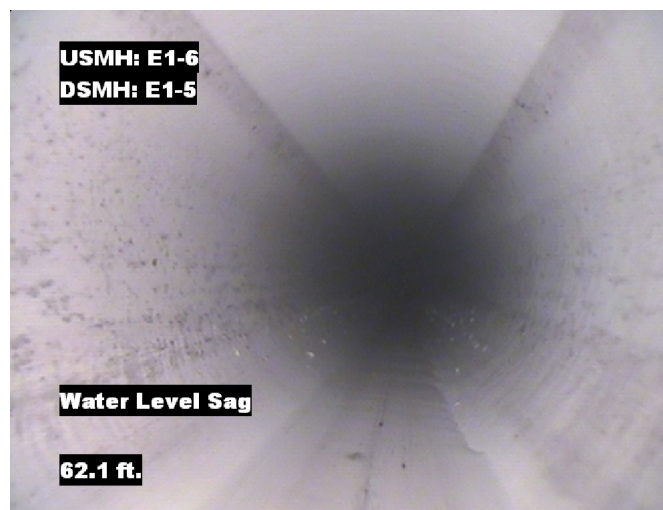


Image Report 4/Page

Pipe Segment Refere... E1-6_E1-5	City Oliver Springs	Street Hwy 62	Material PolyVinyl Chloride		Location C... Yard	Sewer Use Sanitary
Upstream MH E1-6	Total Length 354.9	Year Laid	Shape Circular		Location Details usmh located in hea...	
DS Manhole E1-5	Length surveyed 354.9	Year Renewed	Height 8	Width 8	Pipe Joint... 13	



Distance: 59.0 ft. Grade: 2
Condition: Water Level Sag
Remarks: N/A



Distance: 62.1 ft. Grade: 2
Condition: Water Level Sag
Remarks: N/A



Distance: 86.9 ft. Grade: 2
Condition: Water Level Sag
Remarks: N/A

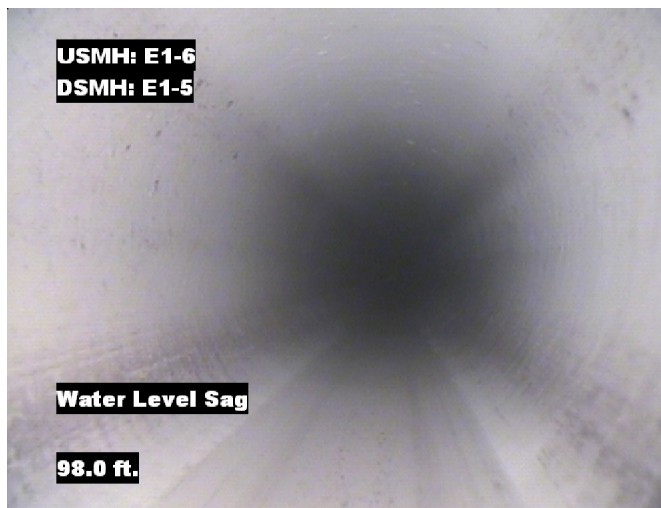


Distance: 96.6 ft. Grade: 2
Condition: Water Level Sag
Remarks: N/A

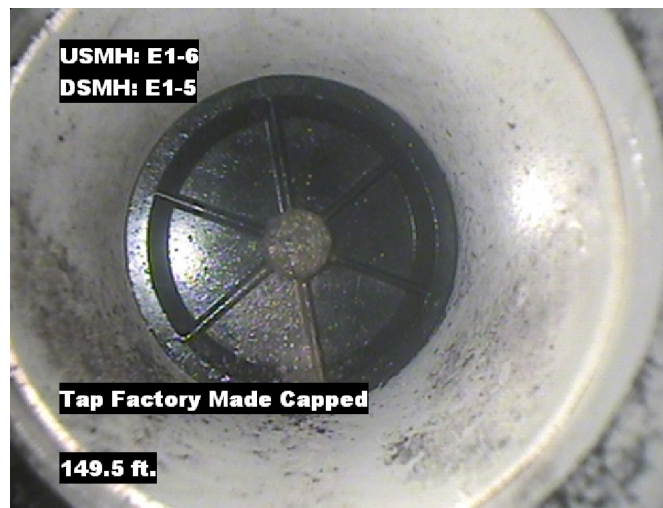


Image Report 4/Page

Pipe Segment Refere...	City	Street	Material	Location C...	Sewer Use
E1-6_E1-5	Oliver Springs	Hwy 62	PolyVinyl Chloride	Yard	Sanitary
Upstream MH	Total Length	Year Laid	Shape	Location Details	
E1-6	354.9		Circular	usmh located in hea...	
DS Manhole	Length surveyed	Year Renewed	Height	Width	Pipe Joint...
E1-5	354.9		8	8	13



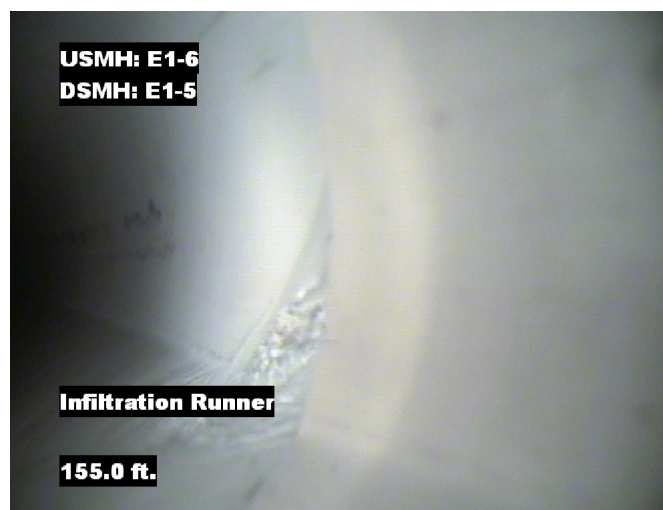
Distance: 98.0 ft. Grade: 2
Condition: Water Level Sag
Remarks: N/A



Distance: 149.5 ft. Grade: 0
Condition: Tap Factory Made Capped
Remarks: N/A



Distance: 151.3 ft. Grade: 0
Condition: Tap Factory Made Active
Remarks: N/A



Distance: 155.0 ft. Grade: 4
Condition: Infiltration Runner
Remarks: N/A



Image Report 4/Page

Pipe Segment Refere...	City	Street	Material	Location C...	Sewer Use
E1-6_E1-5	Oliver Springs	Hwy 62	PolyVinyl Chloride	Yard	Sanitary
Upstream MH	Total Length	Year Laid	Shape	Location Details	
E1-6	354.9		Circular	usmh located in hea...	
DS Manhole	Length surveyed	Year Renewed	Height	Width	Pipe Joint...
E1-5	354.9		8	8	13



Distance: 187.3 ft. Grade: 2
Condition: Water Level Sag
Remarks: N/A



Distance: 193.9 ft. Grade: 2
Condition: Water Level Sag
Remarks: N/A



Distance: 194.6 ft. Grade: 2
Condition: Water Level Sag
Remarks: N/A



Distance: 200.3 ft. Grade: 2
Condition: Water Level Sag
Remarks: N/A



Image Report 4/Page

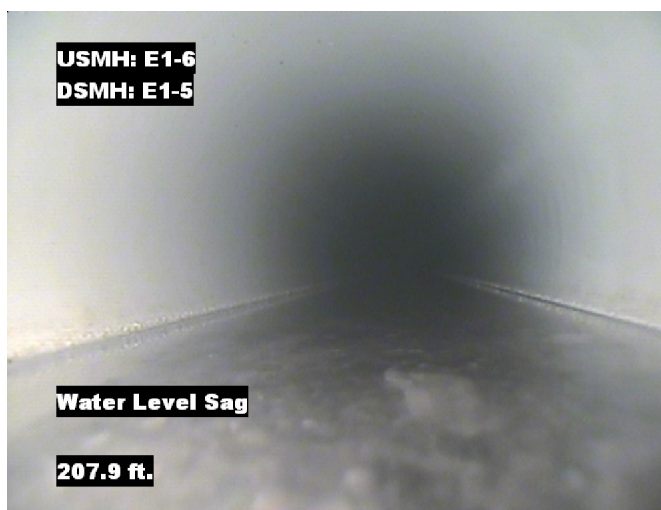
Pipe Segment Refere... E1-6_E1-5	City Oliver Springs	Street Hwy 62	Material PolyVinyl Chloride		Location C... Yard	Sewer Use Sanitary
Upstream MH E1-6	Total Length 354.9	Year Laid	Shape Circular		Location Details usmh located in hea...	
DS Manhole E1-5	Length surveyed 354.9	Year Renewed	Height 8	Width 8	Pipe Joint... 13	



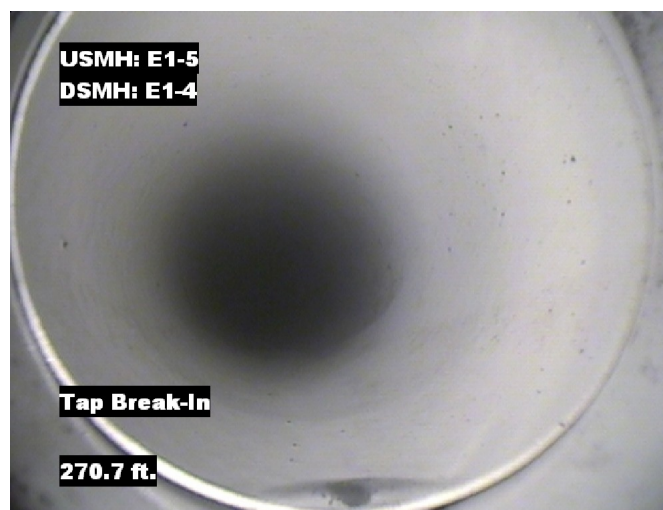
Distance: 204.0 ft. Grade: 2
Condition: Water Level Sag
Remarks: N/A



Distance: 207.5 ft. Grade: 0
Condition: General Observation
Remarks: Line has been cleaned again



Distance: 207.9 ft. Grade: 2
Condition: Water Level Sag
Remarks: N/A

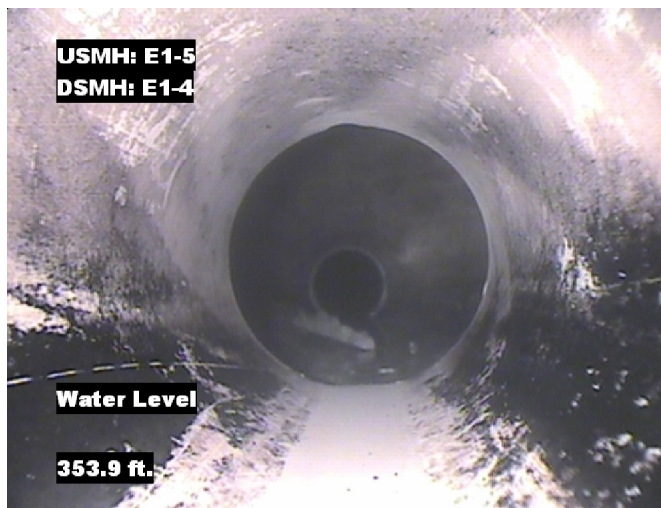


Distance: 270.7 ft. Grade: 0
Condition: Tap Break-In
Remarks: N/A



Image Report 4/Page

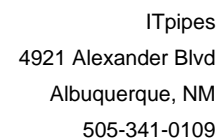
Pipe Segment Refere... E1-6_E1-5	City Oliver Springs	Street Hwy 62	Material PolyVinyl Chloride		Location C... Yard	Sewer Use Sanitary
Upstream MH E1-6	Total Length 354.9	Year Laid	Shape Circular		Location Details usmh located in hea...	
DS Manhole E1-5	Length surveyed 354.9	Year Renewed	Height 8	Width 8	Pipe Joint... 13	



Distance: 353.9 ft. Grade: 0
Condition: Water Level
Remarks: N/A



Distance: 354.9 ft. Grade: 0
Condition: Access Point Manhole
Remarks: e1-5



PACP Conditions

Pipe Segment Refere... E1-6_E1-5	City Oliver Springs	Street Hwy 62	Material PolyVinyl Chloride		Location C... Yard	Sewer Use Sanitary
Upstream MH E1-6	Total Length 354.9	Year Laid	Shape Circular		Location Details usmh located in hea...	
DS Manhole E1-5	Length surveyed 354.9	Year Renewed	Height 8	Width 8	Pipe Joint... 13	
SPR N/A	MPR 31	PO Number 4397-03		Customer GRW		
SPRI N/A	MPRI 2.2	Work Order 4397-02		Purpose Pre-Rehabilitation Survey		
QSR N/A	QMR 4131					
OPR 31	Surveyed By David_brown	Direction Downstream	Date 20150620		Media label	
OPRI 2.2	Certificate Number U-607-5202	Pre-Cleaning Jetting	Time 12:56		Weather Saturated	
Date Cleaned 20150620			End Time 13:04		Additional Info map was off observa...	

Normal Defects			Structural Ratings			O & M Ratings			Combined Ratings										
			Grade Rating	No. Occur.	Rating	Grade Rating	No. Occur.	Rating	Grade Rating	No. Occur.	Rating								
			1	0	0	1	0	0	1	0	0								
			2	0	0	2	6	12	2	6	12								
			3	0	0	3	1	3	3	1	3								
			4	0	0	4	1	4	4	1	4								
			5	0	0	5	0	0	5	0	0								
Continuous Defects																			
Code	ID	Length																	
MWLS	F01	4.7									0	0	0	2	1	2	2	1	2
MWLS	F02	9.7									0	0	0	2	2	4	2	2	4
MWLS	F03	6.6									0	0	0	2	1	2	2	1	2
MWLS	F04	7.6									0	0	0	2	2	4	2	2	4
			Subtotals	0		Subtotals	14		Subtotals	14									
SUMMARY			Pipe Rating		0	Pipe Rating		31	Overall Pipe Rating		31								
			Structural Index		0	O&M Index		2.2	Overall Index		2.2								
			Str. Quick Rating		0000	O&M Quick Rating		4131	Ovrl. Quick Rating		4131								