



Defect Listing

Pipe Segment Refere... E1-5_E1-4	City Oliver Springs	Street Hwy 62	Material PolyVinyl Chloride	Location C... Yard	Sewer Use Sanitary
Upstream MH E1-5	Total Length 239.4	Year Laid	Shape Circular	Location Details usmh located in par...	
DS Manhole E1-4	Length surveyed 239.4	Year Renewed	Height 8	Width 8	Pipe Joint... 13

SPR N/A	MPR 10	PO Number 4397-03	Customer GRW
SPRI N/A	MPRI 2	Work Order 4397-02	Purpose Pre-Rehabilitation Survey
QSR N/A	QMR 2500		
OPR 10	Surveyed By David_brown	Direction Downstream	Date 20150620
OPRI 2	Certificate Number U-607-5202	Pre-Cleaning Jetting	Time 14:22
	Date Cleaned 20150620	End Time 14:35	Weather Saturated
			Media label
			Additional Info

Distance	Condition	Cont. Dfct.	Values			Joint	Clock Position		Grade
			1st	2nd	%		At/From	To	
0.0 ft.	Access Point Manhole				0	<input type="checkbox"/>			
Remarks: E1-5									
0.0 ft.	Water Level				5	<input type="checkbox"/>			
54.9 ft.	Water Level Sag	S01			15	<input type="checkbox"/>			2
61.7 ft.	Water Level Sag	F01			15	<input type="checkbox"/>			2
61.7 ft.	Water Level Sag				5	<input type="checkbox"/>			2
80.3 ft.	Water Level Sag				15	<input type="checkbox"/>			2
82.8 ft.	Water Level Sag	S02			25	<input type="checkbox"/>			2
88.6 ft.	Water Level Sag	F02			25	<input type="checkbox"/>			2
90.2 ft.	Water Level Sag				5	<input type="checkbox"/>			2
237.5 ft.	Water Level				10	<input type="checkbox"/>			
239.4 ft.	Access Point Manhole				0	<input type="checkbox"/>			
Remarks: E1-4									

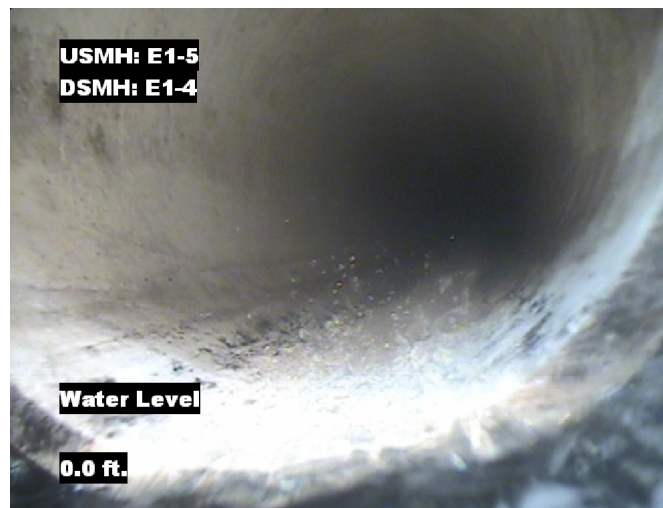


Image Report 4/Page

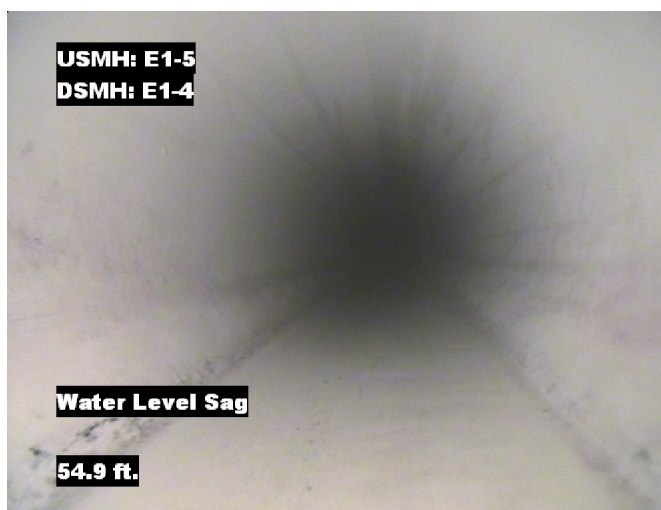
Pipe Segment Refere... E1-5_E1-4	City Oliver Springs	Street Hwy 62	Material PolyVinyl Chloride		Location C... Yard	Sewer Use Sanitary
Upstream MH E1-5	Total Length 239.4	Year Laid	Shape Circular		Location Details usmh located in par...	
DS Manhole E1-4	Length surveyed 239.4	Year Renewed	Height 8	Width 8	Pipe Joint...	13



Distance: 0.0 ft. Grade: 0
Condition: Access Point Manhole
Remarks: E1-5



Distance: 0.0 ft. Grade: 0
Condition: Water Level
Remarks: N/A



Distance: 54.9 ft. Grade: 2
Condition: Water Level Sag
Remarks: N/A

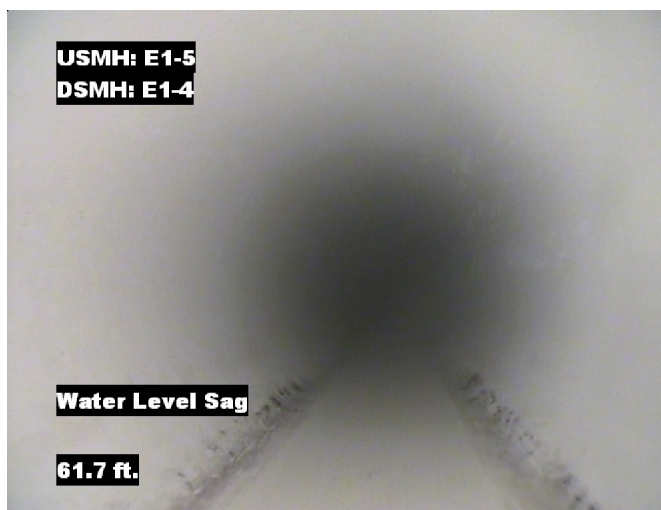


Distance: 61.7 ft. Grade: 2
Condition: Water Level Sag
Remarks: N/A



Image Report 4/Page

Pipe Segment Refere... E1-5_E1-4	City Oliver Springs	Street Hwy 62	Material PolyVinyl Chloride		Location C... Yard	Sewer Use Sanitary
Upstream MH E1-5	Total Length 239.4	Year Laid	Shape Circular		Location Details usmh located in par...	
DS Manhole E1-4	Length surveyed 239.4	Year Renewed	Height 8	Width 8	Pipe Joint... 13	



Distance: 61.7 ft. Grade: 2
Condition: Water Level Sag
Remarks: N/A



Distance: 80.3 ft. Grade: 2
Condition: Water Level Sag
Remarks: N/A



Distance: 82.8 ft. Grade: 2
Condition: Water Level Sag
Remarks: N/A



Distance: 88.6 ft. Grade: 2
Condition: Water Level Sag
Remarks: N/A



Image Report 4/Page

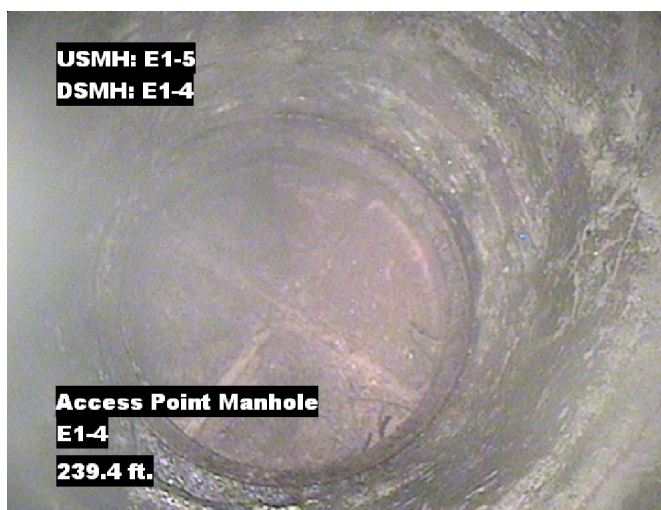
Pipe Segment Refere...	City	Street	Material	Location C...	Sewer Use
E1-5_E1-4	Oliver Springs	Hwy 62	PolyVinyl Chloride	Yard	Sanitary
Upstream MH	Total Length	Year Laid	Shape	Location Details	
E1-5	239.4		Circular	usmh located in par...	
DS Manhole	Length surveyed	Year Renewed	Height	Width	Pipe Joint...
E1-4	239.4		8	8	13



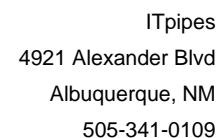
Distance: 90.2 ft. Grade: 2
Condition: Water Level Sag
Remarks: N/A



Distance: 237.5 ft. Grade: 0
Condition: Water Level
Remarks: N/A



Distance: 239.4 ft. Grade: 0
Condition: Access Point Manhole
Remarks: E1-4



PACP Conditions

Pipe Segment Refere... E1-5_E1-4	City Oliver Springs	Street Hwy 62	Material PolyVinyl Chloride		Location C... Yard	Sewer Use Sanitary
Upstream MH E1-5	Total Length 239.4	Year Laid	Shape Circular		Location Details usmh located in par...	
DS Manhole E1-4	Length surveyed 239.4	Year Renewed	Height 8	Width 8	Pipe Joint... 13	
SPR N/A	MPR 10	PO Number 4397-03		Customer GRW		
SPRI N/A	MPRI 2	Work Order 4397-02		Purpose		
QSR N/A	QMR 2500			Pre-Rehabilitation Survey		
OPR 10	Surveyed By David_brown	Direction Downstream	Date 20150620		Media label	
OPRI 2	Certificate Number U-607-5202	Pre-Cleaning Jetting	Time 14:22		Weather Saturated	
Date Cleaned 20150620			End Time 14:35		Additional Info	

Normal Defects			Structural Ratings			O & M Ratings			Combined Ratings		
			Grade Rating	No. Occur.	Rating	Grade Rating	No. Occur.	Rating	Grade Rating	No. Occur.	Rating
Continuous Defects			1	0	0	1	0	0	1	0	0
			2	0	0	2	3	6	2	3	6
			3	0	0	3	0	0	3	0	0
			4	0	0	4	0	0	4	0	0
			5	0	0	5	0	0	5	0	0
Code	ID	Length	0	0	0	2	1	2	2	1	2
MWLS	F01	6.8									
MWLS	F02	5.8									
			0	0	0	2	1	2	2	1	2
			0	0	0	2	1	2	2	1	2
			0	0	0	2	1	2	2	1	2
			0	0	0	2	1	2	2	1	2
			0	0	0	2	1	2	2	1	2
			0	0	0	2	1	2	2	1	2
			0	0	0	2	1	2	2	1	2
			0	0	0	2	1	2	2	1	2
			0	0	0	2	1	2	2	1	2
			0	0	0	2	1	2	2	1	2
			0	0	0	2	1	2	2	1	2
			0	0	0	2	1	2	2	1	2
			0	0	0	2	1	2	2	1	2
			0	0	0	2	1	2	2	1	2
			0	0	0	2	1	2	2	1	2
			0	0	0	2	1	2	2	1	2
			0	0	0	2	1	2	2	1	2
			0	0	0	2	1	2	2	1	2
			0	0	0	2	1	2	2	1	2
			0	0	0	2	1	2	2	1	2
			0	0	0	2	1	2	2	1	2
			0	0	0	2	1	2	2	1	2
			0	0	0	2	1	2	2	1	2
			0	0	0	2	1	2	2	1	2
			0	0	0	2	1	2	2	1	2
			0	0	0	2	1	2	2	1	2
			0	0	0	2	1	2	2	1	2
			0	0	0	2	1	2	2	1	2
			0	0	0	2	1	2	2	1	2
			0	0	0	2	1	2	2	1	2
			0	0	0	2	1	2	2	1	2
			0	0	0	2	1	2	2	1	2
			0	0	0	2	1	2	2	1	2
			0	0	0	2	1	2	2	1	2
			0	0	0	2	1	2	2	1	2
			0	0	0	2	1	2	2	1	2
			0	0	0	2	1	2	2	1	2
			0	0	0	2	1	2	2	1	2
			0	0	0	2	1	2	2	1	2
			0	0	0	2	1	2	2	1	2
			0	0	0	2	1	2	2	1	2
			0	0	0	2	1	2	2	1	2
			0	0	0	2	1	2	2	1	2
			0	0	0	2	1	2	2	1	2
			0	0	0	2	1	2	2	1	2
			0	0	0	2	1	2	2	1	2
			0	0	0	2	1	2	2	1	2
			0	0	0	2	1	2	2	1	2
			0	0	0	2	1	2	2	1	2
			0	0	0	2	1	2	2	1	2
			0	0	0	2	1	2	2	1	2
			0	0	0	2	1	2	2	1	2
			0	0	0	2	1	2	2	1	2
			0	0	0	2	1	2	2	1	2
			0	0	0	2	1	2	2	1	2
			0	0	0	2	1	2	2	1	2
			0	0	0	2	1	2	2	1	2
			0	0	0	2	1	2	2	1	2
			0	0	0	2	1	2	2	1	2
			0	0	0	2	1	2	2	1	2
			0	0	0	2	1	2	2	1	2
			0	0	0	2	1	2	2	1	2
			0	0	0	2	1	2	2	1	2
			0	0	0	2	1	2	2	1	2
			0	0	0	2	1	2	2	1	2
			0	0	0	2	1	2	2	1	2
			0	0	0	2	1	2	2	1	2
			0	0	0	2	1	2	2	1	2
			0	0	0	2	1	2	2	1	2
			0	0	0	2	1	2	2	1	2
			0	0	0	2	1	2	2	1	2
			0	0	0	2	1	2	2	1	2
			0	0	0	2	1	2	2	1	2
			0	0	0	2	1	2	2	1	2
			0	0	0	2	1	2	2	1	2
			0	0	0	2	1	2	2	1	2
			0	0	0	2	1	2	2	1	2
			0	0	0	2	1	2	2	1	2
			0	0	0	2	1	2	2	1	2
			0	0	0	2	1	2	2	1	2
			0	0	0	2	1	2	2	1	2
			0	0	0	2	1	2	2	1	2
			0	0	0	2	1	2	2	1	2
			0	0	0	2	1	2	2	1	2
			0	0	0	2	1	2	2	1	2
			0	0	0	2	1	2	2	1	2
			0	0	0	2	1	2	2	1	2
			0	0	0	2	1	2	2	1	2
			0	0	0	2	1	2	2	1	2
			0	0	0	2	1	2	2	1	2
			0	0	0	2	1	2	2	1	2
			0	0	0	2	1	2	2	1	2
			0	0	0	2	1	2	2	1	2
			0	0	0	2	1	2	2	1	2
			0	0	0	2	1	2	2	1	2
			0	0	0	2	1	2	2	1	2
			0	0	0	2	1	2	2	1	2
			0	0	0	2	1	2	2	1	2
			0	0	0	2	1	2	2	1	2
			0	0	0	2	1	2	2	1	2
			0	0	0	2	1	2	2	1	2
			0	0	0	2	1	2	2	1	2
			0	0	0	2	1	2	2	1	2
			0	0	0	2	1	2			