



## Defect Listing

Pipe Segment Refere... <b>E1-3_E1-2</b>	City <b>Oliver Springs</b>	Street <b>Hwy62</b>	Material <b>PolyVinyl Chloride</b>	Location C... <b>Main Highw...</b>	Sewer Use <b>Sanitary</b>
Upstream MH <b>E1-3</b>	Total Length <b>140.1</b>	Year Laid	Shape <b>Circular</b>	Location Details <b>Side of Hwy</b>	
DS Manhole <b>E1-2</b>	Length surveyed <b>140.1</b>	Year Renewed	Height <b>8</b>	Width <b>8</b>	Pipe Joint... <b>13</b>

SPR <b>N/A</b>	MPR <b>N/A</b>	PO Number <b>4397-03</b>		Customer <b>GRW</b>	
SPRI <b>N/A</b>	MPRI <b>N/A</b>	Work Order <b>4397-02</b>		Purpose <b>Pre-Rehabilitation Survey</b>	
QSR <b>N/A</b>	QMR <b>N/A</b>				
OPR <b>N/A</b>	Surveyed By <b>Barry Rogers</b>	Direction <b>Upstream</b>	Date <b>20150622</b>	Media label	
OPRI <b>N/A</b>	Certificate Number <b>U-1012-16405</b>	Pre-Cleaning <b>Jetting</b>	Time <b>08:36</b>	Weather <b>Damp</b>	
Date Cleaned <b>20150622</b>			End Time <b>08:42</b>	Additional Info	

Distance	Condition	Cont. Dfct.	Values			Joint	Clock Position		Grade
			1st	2nd	%		At/From	To	
0.0 ft.	Access Point Manhole				0	<input type="checkbox"/>			
Remarks: E1-2									
0.0 ft.	Water Level				5	<input type="checkbox"/>			
137.7 ft.	Water Level				5	<input type="checkbox"/>			
140.1 ft.	Access Point Manhole				0	<input type="checkbox"/>			
Remarks: E1-3									

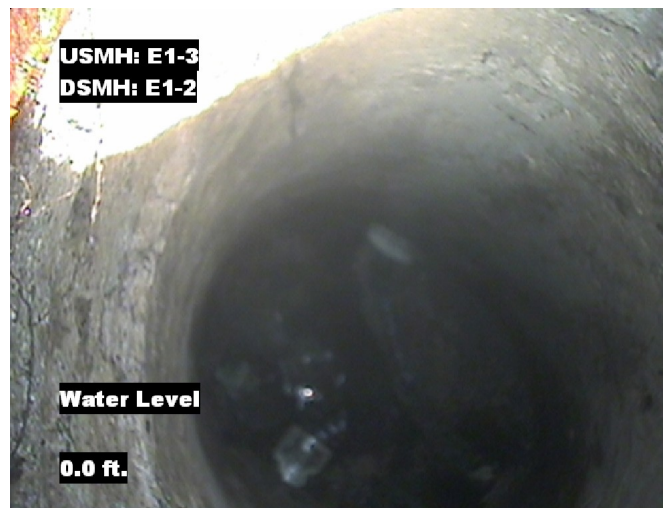


## Image Report 4/Page

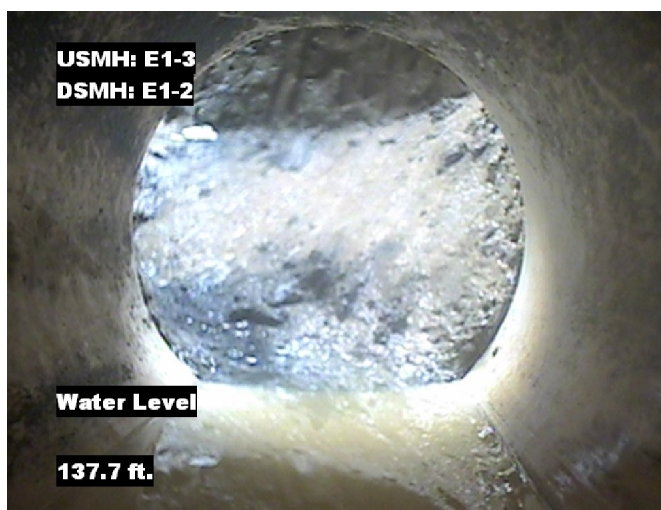
Pipe Segment Refere...	City	Street	Material	Location C...	Sewer Use
E1-3_E1-2	Oliver Springs	Hwy62	PolyVinyl Chloride	Main Highw...	Sanitary
Upstream MH	Total Length	Year Laid	Shape	Location Details	
E1-3	140.1		Circular	Side of Hwy	
DS Manhole	Length surveyed	Year Renewed	Height	Width	Pipe Joint...
E1-2	140.1		8	8	13



Distance: 0.0 ft. Grade: 0  
Condition: Access Point Manhole  
Remarks: E1-2



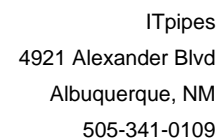
Distance: 0.0 ft. Grade: 0  
Condition: Water Level  
Remarks: N/A



Distance: 137.7 ft. Grade: 0  
Condition: Water Level  
Remarks: N/A



Distance: 140.1 ft. Grade: 0  
Condition: Access Point Manhole  
Remarks: E1-3



Pipe Segment Refere... E1-3_E1-2	City Oliver Springs	Street Hwy62	Material PolyVinyl Chloride		Location C... Main Highw...	Sewer Use Sanitary
Upstream MH E1-3	Total Length 140.1	Year Laid	Shape Circular		Location Details Side of Hwy	
DS Manhole E1-2	Length surveyed 140.1	Year Renewed	Height 8	Width 8	Pipe Joint... 13	
SPR N/A	MPR N/A	PO Number 4397-03			Customer GRW	
SPRI N/A	MPRI N/A	Work Order 4397-02			Purpose	
QSR N/A	QMR N/A	Pre-Rehabilitation Survey				
OPR N/A	Surveyed By Barry_Rogers	Direction Upstream	Date 20150622		Media label	
OPRI N/A	Certificate Number U-1012-16405	Pre-Cleaning Jetting	Time 08:36		Weather Damp	
Date Cleaned 20150622			End Time 08:42		Additional Info	

Page #: 3