



## Defect Listing

Pipe Segment Refere... <b>E1-2_E-1</b>	City <b>Oliver Springs</b>	Street <b>Hwy62</b>	Material <b>PolyVinyl Chloride</b>	Location C... <b>Easement/R...</b>	Sewer Use <b>Sanitary</b>
Upstream MH <b>E1-2</b>	Total Length <b>299</b>	Year Laid	Shape <b>Circular</b>	Location Details <b>Side of Hwy</b>	
DS Manhole <b>E-1</b>	Length surveyed <b>299</b>	Year Renewed	Height <b>8</b>	Width <b>8</b>	Pipe Joint... <b>13</b>

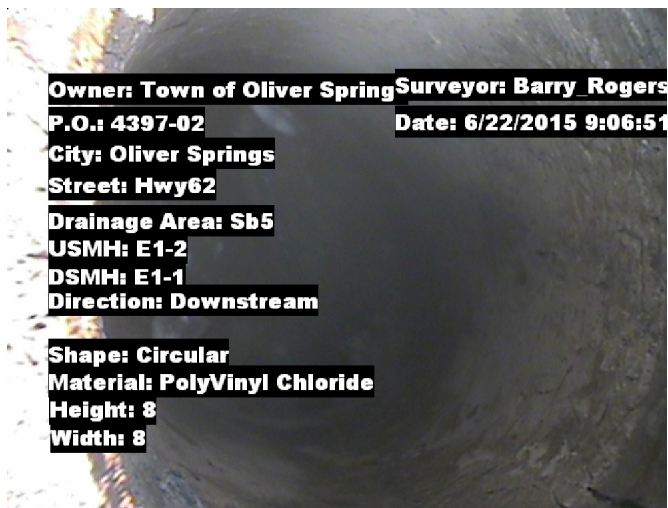
SPR <b>N/A</b>	MPR <b>N/A</b>	PO Number <b>4397-03</b>		Customer <b>GRW</b>	
SPRI <b>N/A</b>	MPRI <b>N/A</b>	Work Order <b>4397-02</b>		Purpose <b>Pre-Rehabilitation Survey</b>	
QSR <b>N/A</b>	QMR <b>N/A</b>				
OPR <b>N/A</b>	Surveyed By <b>Barry Rogers</b>	Direction <b>Downstream</b>	Date <b>20150622</b>	Media label	
OPRI <b>N/A</b>	Certificate Number <b>U-1012-16405</b>	Pre-Cleaning <b>Jetting</b>	Time <b>09:14</b>	Weather <b>Damp</b>	
Date Cleaned <b>20150622</b>			End Time <b>09:25</b>	Additional Info <b>Mh E1-1 does not ex...</b>	

Distance	Condition	Cont. Dfct.	Values			Joint	Clock Position		Grade
			1st	2nd	%		At/From	To	
0.0 ft.	Access Point Manhole				0	<input type="checkbox"/>			
<b>Remarks:</b> E1-2									
0.0 ft.	Water Level				5	<input type="checkbox"/>			
280.6 ft.	Tap Factory Made		6		0	<input checked="" type="checkbox"/>	3		
299.0 ft.	Survey Abandoned				0	<input type="checkbox"/>			
<b>Remarks:</b> Elbow in Pipe unable to crawl on.									

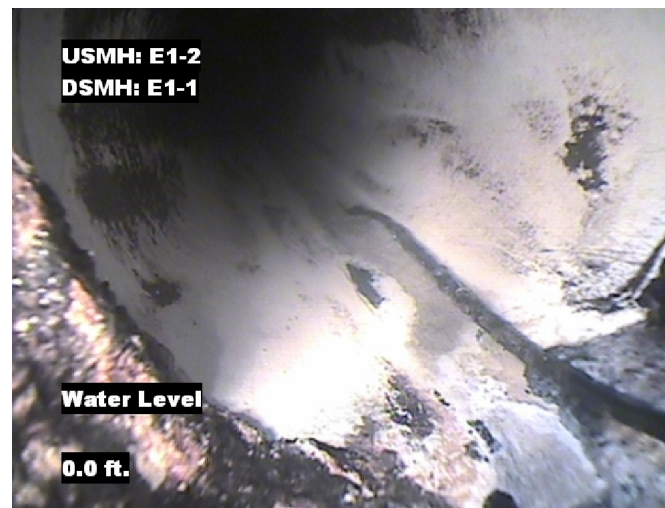


## Image Report 4/Page

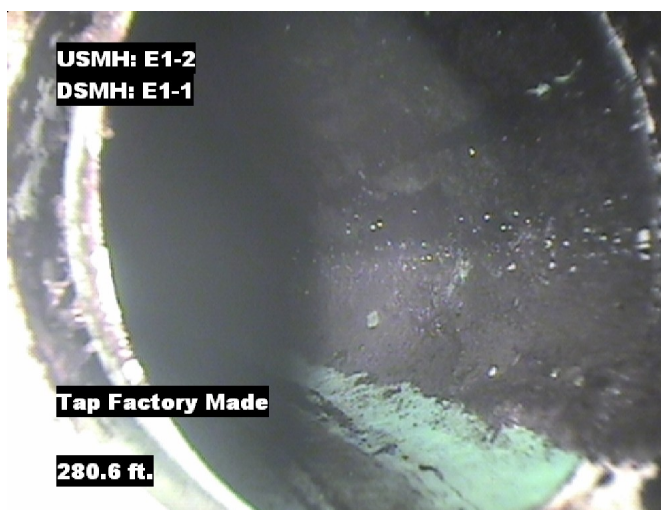
Pipe Segment Refere... <b>E1-2_E-1</b>	<b>City</b> <b>Oliver Springs</b>	<b>Street</b> <b>Hwy62</b>	<b>Material</b> <b>PolyVinyl Chloride</b>		<b>Location C...</b> <b>Easement/R...</b>	<b>Sewer Use</b> <b>Sanitary</b>
<b>Upstream MH</b> <b>E1-2</b>	Total Length <b>299</b>	Year Laid	<b>Shape</b> <b>Circular</b>		Location Details <b>Side of Hwy</b>	
<b>DS Manhole</b> <b>E-1</b>	<b>Length surveyed</b> <b>299</b>	Year Renewed	<b>Height</b> <b>8</b>	Width <b>8</b>	Pipe Joint... <b>13</b>	



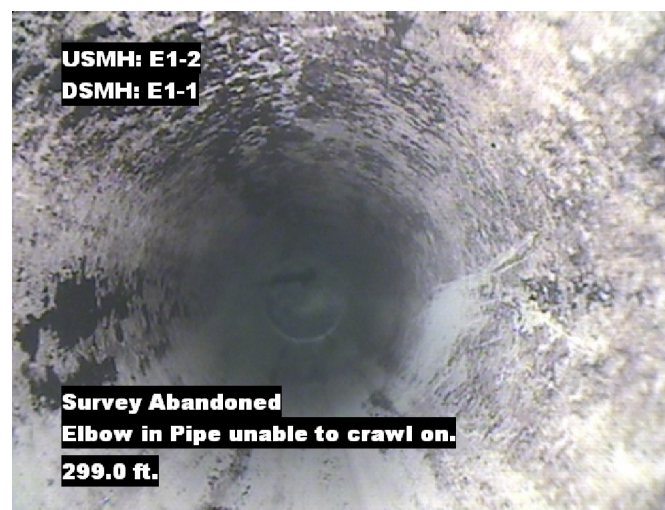
Distance: 0.0 ft. Grade: 0  
Condition: Access Point Manhole  
Remarks: E1-2



Distance: 0.0 ft. Grade: 0  
Condition: Water Level  
Remarks: N/A



Distance: 280.6 ft. Grade: 0  
Condition: Tap Factory Made  
Remarks: N/A



Distance: 299.0 ft. Grade: 0  
Condition: Survey Abandoned  
Remarks: Elbow in Pipe unable to crawl on.



Pipe Segment Refere... <b>E1-2_E-1</b>	City <b>Oliver Springs</b>	Street <b>Hwy62</b>	Material <b>PolyVinyl Chloride</b>		Location C... <b>Easement/R...</b>	Sewer Use <b>Sanitary</b>
Upstream MH <b>E1-2</b>	Total Length <b>299</b>	Year Laid	Shape <b>Circular</b>		Location Details <b>Side of Hwy</b>	
DS Manhole <b>E-1</b>	Length surveyed <b>299</b>	Year Renewed	Height <b>8</b>	Width <b>8</b>	Pipe Joint... <b>13</b>	
SPR <b>N/A</b>	MPR <b>N/A</b>	PO Number <b>4397-03</b>			Customer <b>GRW</b>	
SPRI <b>N/A</b>	MPRI <b>N/A</b>	Work Order <b>4397-02</b>			Purpose	
QSR <b>N/A</b>	QMR <b>N/A</b>				Pre-Rehabilitation Survey	
OPR <b>N/A</b>	Surveyed By <b>Barry_Rogers</b>	Direction <b>Downstream</b>	Date <b>20150622</b>		Media label	
OPRI <b>N/A</b>	Certificate Number <b>U-1012-16405</b>	Pre-Cleaning <b>Jetting</b>	Time <b>09:14</b>		Weather <b>Damp</b>	
Date Cleaned <b>20150622</b>			End Time <b>09:25</b>		Additional Info <b>Mh E1-1 does not ex...</b>	

			Structural Ratings			O & M Ratings			Combined Ratings		
			Grade Rating	No. Occur.	Rating	Grade Rating	No. Occur.	Rating	Grade Rating	No. Occur.	Rating
Normal Defects											
<div>Continuous Defects</div>			1	0	0	1	0	0	1	0	0
			2	0	0	2	0	0	2	0	0
			3	0	0	3	0	0	3	0	0
			4	0	0	4	0	0	4	0	0
			5	0	0	5	0	0	5	0	0
Code	ID	Length									
			Subtotals	0		Subtotals	0		Subtotals	0	
SUMMARY			Pipe Rating	0		Pipe Rating	0		Overall Pipe Rating	0	
			Structural Index	0		O&M Index	0		Overall Index	0	
			Str. Quick Rating	0000		O&M Quick Rating	0000		Ovrl. Quick Rating	0000	