



## Defect Listing

Pipe Segment Refere... <b>E-14_E-13</b>	City <b>Oliver Springs</b>	Street <b>Cedar Ln</b>	Material <b>PolyVinyl Chloride</b>	Location C... <b>Yard</b>	Sewer Use <b>Sanitary</b>
Upstream MH <b>E-14</b>	Total Length <b>244.5</b>	Year Laid	Shape <b>Circular</b>	Location Details <b>Side of Rd</b>	
DS Manhole <b>E-13</b>	Length surveyed <b>244.5</b>	Year Renewed	Height <b>8</b>	Width <b>8</b>	Pipe Joint... <b>13</b>

SPR <b>N/A</b>	MPR <b>14</b>	PO Number <b>4397-03</b>	Customer <b>GRW</b>
SPRI <b>N/A</b>	MPRI <b>2.8</b>	Work Order <b>4397-02</b>	Purpose <b>Pre-Rehabilitation Survey</b>
QSR <b>N/A</b>	QMR <b>4223</b>		
OPR <b>14</b>	Surveyed By <b>Barry Rogers</b>	Direction <b>Downstream</b>	Date <b>20150605</b>
OPRI <b>2.8</b>	Certificate Number <b>U-1012-16405</b>	Pre-Cleaning <b>Jetting</b>	Time <b>15:18</b>
	Date Cleaned <b>20150605</b>	End Time <b>15:34</b>	Weather <b>Dry</b>
			Media label
			Additional Info

Distance	Condition	Cont. Dfct.	Values			Joint	Clock Position		Grade
			1st	2nd	%		At/From	To	
0.0 ft.	Access Point Manhole				0	<input type="checkbox"/>			
Remarks: E-14									
0.0 ft.	Water Level				5	<input type="checkbox"/>			
26.9 ft.	Water Level Sag				15	<input type="checkbox"/>			2
36.1 ft.	Camera Underwater				0	<input type="checkbox"/>			4
41.4 ft.	Water Level Sag				60	<input type="checkbox"/>			4
52.4 ft.	Water Level				5	<input type="checkbox"/>			
55.4 ft.	Tap Factory Made		6		0	<input checked="" type="checkbox"/>	9		
120.1 ft.	Tap Factory Made		6		0	<input checked="" type="checkbox"/>	3		
120.1 ft.	Water Level Sag				25	<input type="checkbox"/>			2
123.1 ft.	Tap Factory Made		6		0	<input checked="" type="checkbox"/>	9		
123.1 ft.	Water Level				5	<input type="checkbox"/>			
164.9 ft.	Water Level				15	<input type="checkbox"/>			
208.8 ft.	Water Level Sag				15	<input type="checkbox"/>			2
220.7 ft.	Tap Factory Made		6		0	<input type="checkbox"/>	3		
243.4 ft.	Water Level				5	<input type="checkbox"/>			
244.5 ft.	Access Point Manhole				0	<input type="checkbox"/>			
Remarks: E-13									



## Image Report 4/Page

Pipe Segment Refere... <b>E-14_E-13</b>	<b>City</b> <b>Oliver Springs</b>	<b>Street</b> <b>Cedar Ln</b>	<b>Material</b> <b>PolyVinyl Chloride</b>		<b>Location C...</b> <b>Yard</b>	<b>Sewer Use</b> <b>Sanitary</b>
<b>Upstream MH</b> <b>E-14</b>	Total Length <b>244.5</b>	Year Laid	<b>Shape</b> <b>Circular</b>		Location Details <b>Side of Rd</b>	
<b>DS Manhole</b> <b>E-13</b>	<b>Length surveyed</b> <b>244.5</b>	Year Renewed	<b>Height</b> <b>8</b>	Width <b>8</b>	Pipe Joint... <b>13</b>	



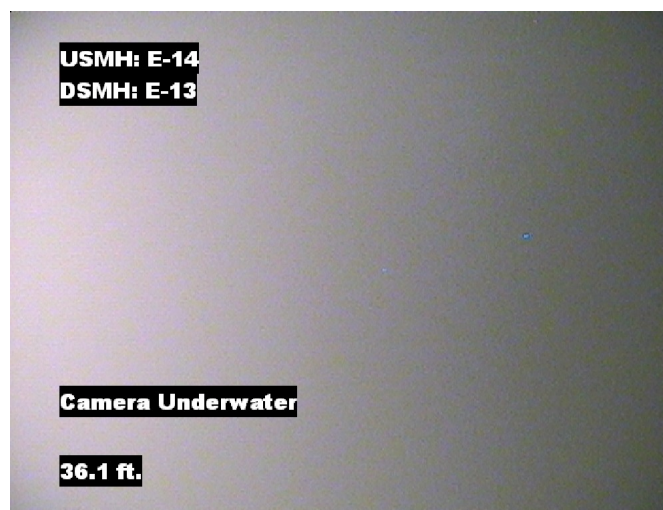
Distance: 0.0 ft. Grade: 0  
Condition: Access Point Manhole  
Remarks: E-14



Distance: 0.0 ft. Grade: 0  
Condition: Water Level  
Remarks: N/A



Distance: 26.9 ft. Grade: 2  
Condition: Water Level Sag  
Remarks: N/A

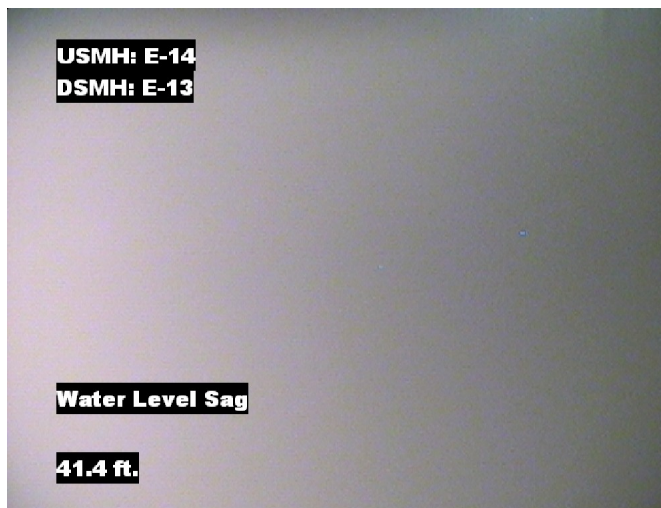


Distance: 36.1 ft. Grade: 4  
Condition: Camera Underwater  
Remarks: N/A

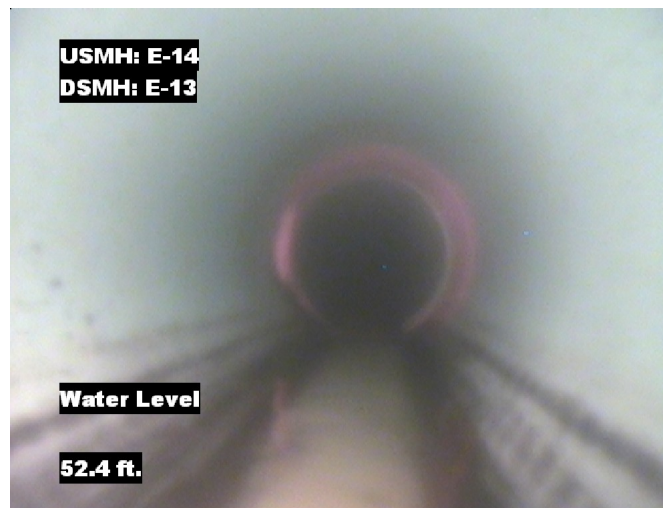


## Image Report 4/Page

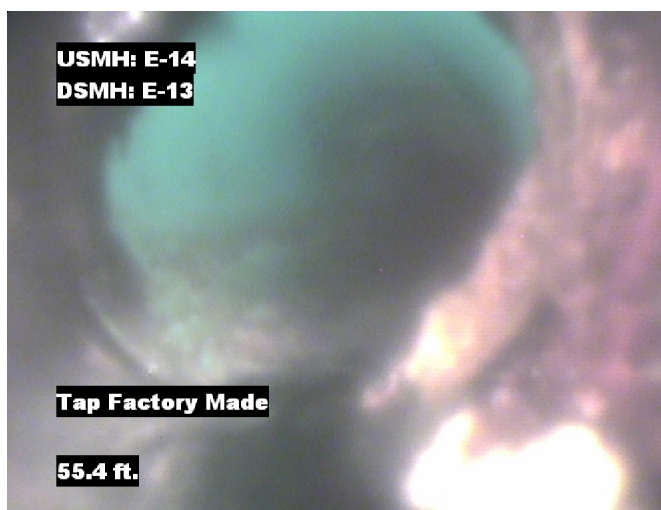
Pipe Segment Refere...	City	Street	Material	Location C...	Sewer Use
<b>E-14_E-13</b>	<b>Oliver Springs</b>	<b>Cedar Ln</b>	<b>PolyVinyl Chloride</b>	<b>Yard</b>	<b>Sanitary</b>
<b>Upstream MH</b>	Total Length	Year Laid	<b>Shape</b>	Location Details	
<b>E-14</b>	<b>244.5</b>		<b>Circular</b>	<b>Side of Rd</b>	
<b>DS Manhole</b>	<b>Length surveyed</b>	Year Renewed	<b>Height</b>	Width	Pipe Joint...
<b>E-13</b>	<b>244.5</b>		<b>8</b>	<b>8</b>	<b>13</b>



Distance: 41.4 ft. Grade: 4  
Condition: Water Level Sag  
Remarks: N/A



Distance: 52.4 ft. Grade: 0  
Condition: Water Level  
Remarks: N/A



Distance: 55.4 ft. Grade: 0  
Condition: Tap Factory Made  
Remarks: N/A



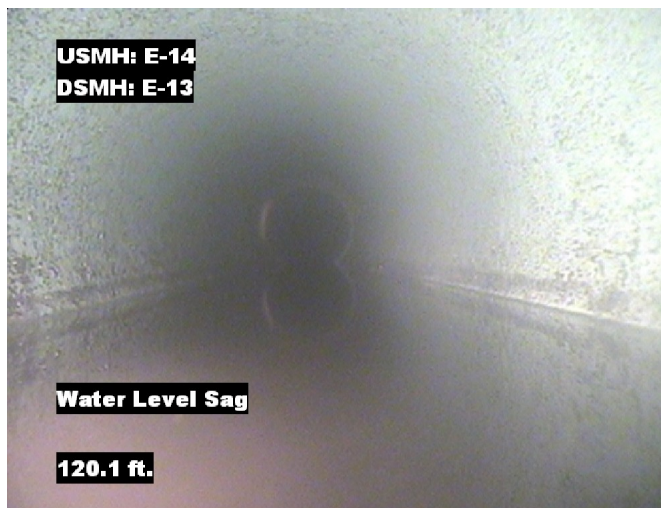
Distance: 120.1 ft. Grade: 0  
Condition: Tap Factory Made  
Remarks: N/A





## Image Report 4/Page

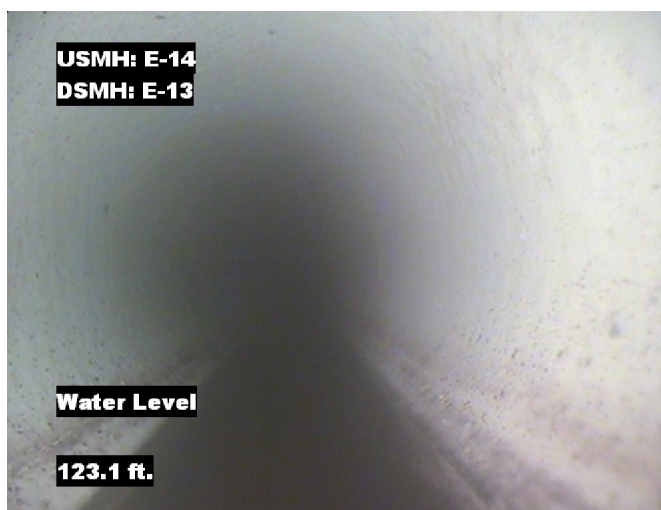
Pipe Segment Refere...	City	Street	Material	Location C...	Sewer Use
E-14_E-13	Oliver Springs	Cedar Ln	PolyVinyl Chloride	Yard	Sanitary
Upstream MH	Total Length	Year Laid	Shape	Location Details	
E-14	244.5		Circular	Side of Rd	
DS Manhole	Length surveyed	Year Renewed	Height	Width	Pipe Joint...
E-13	244.5		8	8	13



Distance: 120.1 ft. Grade: 2  
Condition: Water Level Sag  
Remarks: N/A



Distance: 123.1 ft. Grade: 0  
Condition: Tap Factory Made  
Remarks: N/A



Distance: 123.1 ft. Grade: 0  
Condition: Water Level  
Remarks: N/A



Distance: 164.9 ft. Grade: 0  
Condition: Water Level  
Remarks: N/A

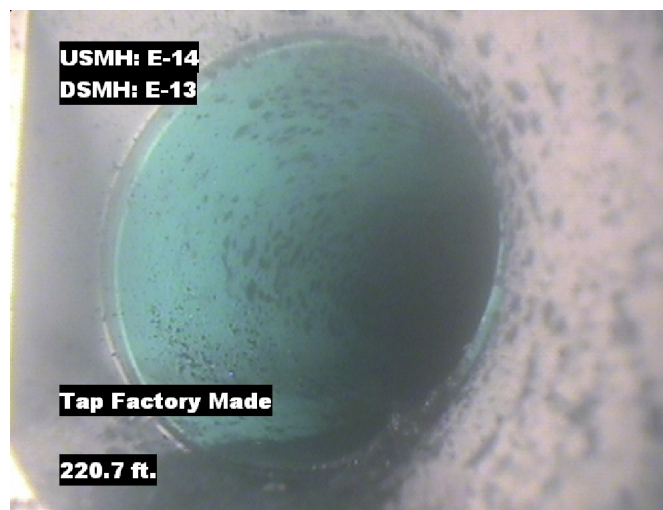


## Image Report 4/Page

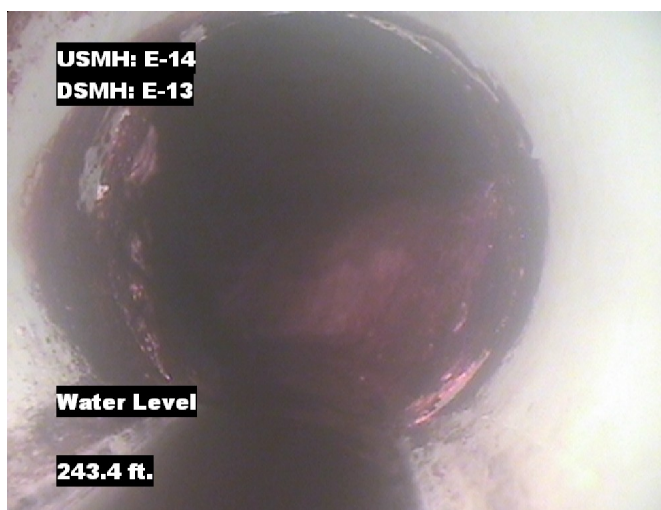
Pipe Segment Refere...	City	Street	Material	Location C...	Sewer Use
E-14_E-13	Oliver Springs	Cedar Ln	PolyVinyl Chloride	Yard	Sanitary
Upstream MH	Total Length	Year Laid	Shape	Location Details	
E-14	244.5		Circular	Side of Rd	
DS Manhole	Length surveyed	Year Renewed	Height	Width	Pipe Joint...
E-13	244.5		8	8	13



Distance: 208.8 ft. Grade: 2  
Condition: Water Level Sag  
Remarks: N/A



Distance: 220.7 ft. Grade: 0  
Condition: Tap Factory Made  
Remarks: N/A



Distance: 243.4 ft. Grade: 0  
Condition: Water Level  
Remarks: N/A



Distance: 244.5 ft. Grade: 0  
Condition: Access Point Manhole  
Remarks: E-13



## PACP Conditions

Pipe Segment Refere... <b>E-14_E-13</b>	City <b>Oliver Springs</b>	Street <b>Cedar Ln</b>	Material <b>PolyVinyl Chloride</b>	Location C... <b>Yard</b>	Sewer Use <b>Sanitary</b>
Upstream MH <b>E-14</b>	Total Length <b>244.5</b>	Year Laid	Shape <b>Circular</b>	Location Details <b>Side of Rd</b>	
DS Manhole <b>E-13</b>	Length surveyed <b>244.5</b>	Year Renewed	Height <b>8</b>	Width <b>8</b>	Pipe Joint... <b>13</b>
SPR <b>N/A</b>	MPR <b>14</b>	PO Number <b>4397-03</b>		Customer <b>GRW</b>	
SPRI <b>N/A</b>	MPRI <b>2.8</b>	Work Order <b>4397-02</b>		Purpose <b>Pre-Rehabilitation Survey</b>	
QSR <b>N/A</b>	QMR <b>4223</b>				
OPR <b>14</b>	Surveyed By <b>Barry Rogers</b>	Direction <b>Downstream</b>	Date <b>20150605</b>	Media label	
OPRI <b>2.8</b>	Certificate Number <b>U-1012-16405</b>	Pre-Cleaning <b>Jetting</b>	Time <b>15:18</b>	Weather <b>Dry</b>	
Date Cleaned <b>20150605</b>			End Time <b>15:34</b>	Additional Info	

			Structural Ratings			O & M Ratings			Combined Ratings		
			Grade Rating	No. Occur.	Rating	Grade Rating	No. Occur.	Rating	Grade Rating	No. Occur.	Rating
Normal Defects											
Continuous Defects			1	0	0	1	0	0	1	0	0
			2	0	0	2	3	6	2	3	6
			3	0	0	3	0	0	3	0	0
			4	0	0	4	2	8	4	2	8
			5	0	0	5	0	0	5	0	0
Code	ID	Length									