



## Defect Listing

Pipe Segment Refere...	City	Street	Material	Location C...	Sewer Use
<b>D8-2_D8-1</b>	<b>Oliver Springs</b>	<b>Highway#61&amp; #62</b>	<b>Concrete Pipe (non-...</b>	<b>Main Highw...</b>	<b>Sanitary</b>
Upstream MH	Total Length	Year Laid	Shape	Location Details	
<b>D8-2</b>	<b>338.7</b>		<b>Circular</b>		
DS Manhole	Length surveyed	Year Renewed	Height	Width	Pipe Joint...
<b>D8-1</b>	<b>338.7</b>		<b>8</b>	<b>8</b>	<b>4</b>

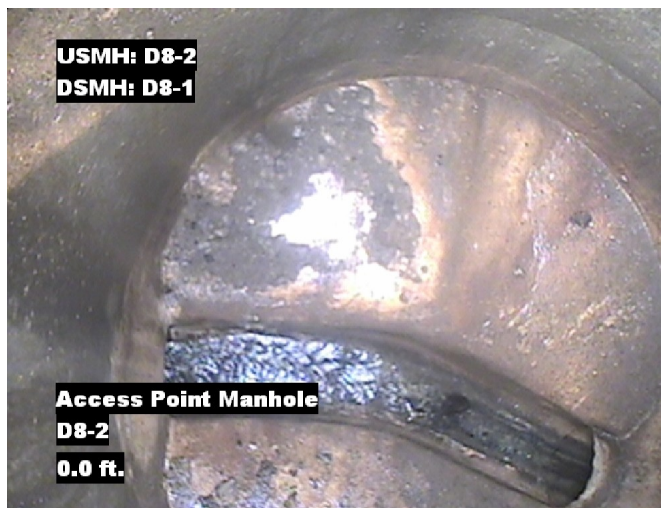
SPR	N/A	MPR	20	PO Number	Customer
SPRI	N/A	MPRI	2.9	<b>4397-03</b>	<b>GRW</b>
QSR	N/A	QMR	5141	Work Order	Purpose
				<b>4397-02</b>	<b>Pre-Rehabilitation Survey</b>
OPR	Surveyed By	Direction	Date	Media label	
<b>20</b>	<b>Barry Rogers</b>	<b>Downstream</b>	<b>20150706</b>		
OPRI	Certificate Number	Pre-Cleaning	Time	Weather	
<b>2.9</b>	<b>U-1012-16405</b>	<b>Jetting</b>	<b>08:15</b>	<b>Dry</b>	
Date Cleaned			End Time	Additional Info	
<b>20150706</b>			<b>08:37</b>		

Distance	Condition	Cont. Dfct.	Values			Joint	Clock Position		Grade
			1st	2nd	%		At/From	To	
0.0 ft.	Access Point Manhole				0	<input type="checkbox"/>			
Remarks: D8-2									
0.0 ft.	Water Level				10	<input type="checkbox"/>			
32.1 ft.	Infiltration Dripper					<input type="checkbox"/>	7	8	3
83.6 ft.	Water Level Sag				10	<input type="checkbox"/>			2
204.9 ft.	Water Level Sag				30	<input type="checkbox"/>			2
242.5 ft.	Water Level Sag				30	<input type="checkbox"/>			2
255.7 ft.	Tap Factory Made		6		0	<input type="checkbox"/>	9		
284.8 ft.	Water Level Sag				20	<input type="checkbox"/>			2
288.7 ft.	Infiltration Gusher				0	<input checked="" type="checkbox"/>	3	9	5
296.7 ft.	Camera Underwater				0	<input type="checkbox"/>			4
338.5 ft.	Water Level				100	<input type="checkbox"/>			
338.7 ft.	Access Point Manhole				0	<input type="checkbox"/>			
Remarks: D8-1									

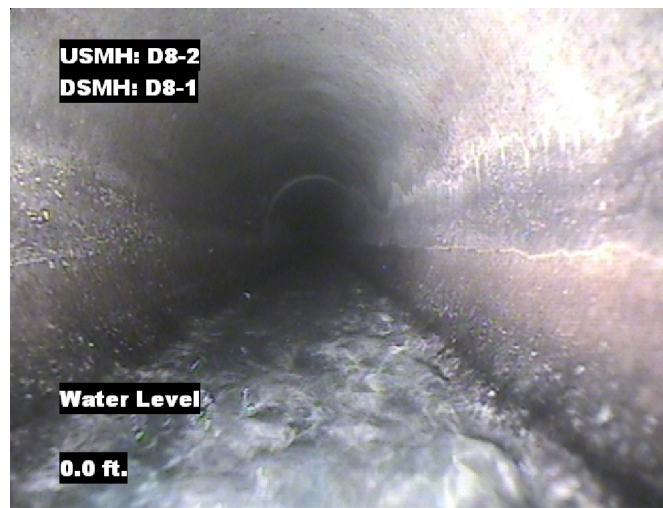


## Image Report 4/Page

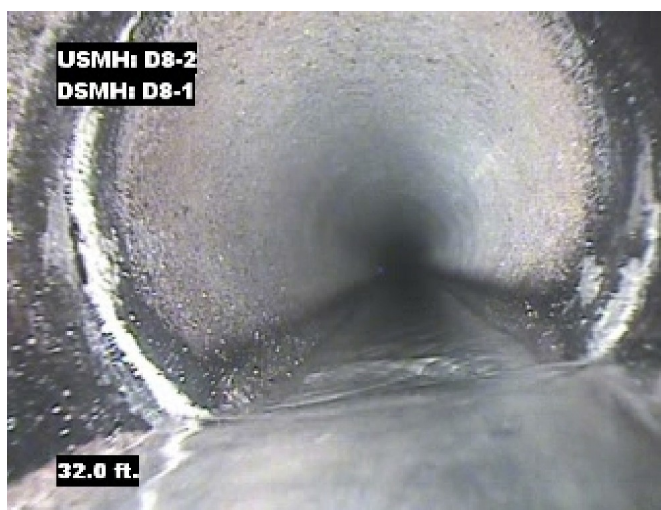
Pipe Segment Refere...	City	Street	Material	Location C...	Sewer Use
D8-2 D8-1	Oliver Springs	Highway#61 & #62	Concrete Pipe (non-...	Main Highw...	Sanitary
Upstream MH	Total Length	Year Laid	Shape	Location Details	
D8-2	338.7		Circular		
DS Manhole	Length surveyed	Year Renewed	Height	Width	Pipe Joint...
D8-1	338.7		8	8	4



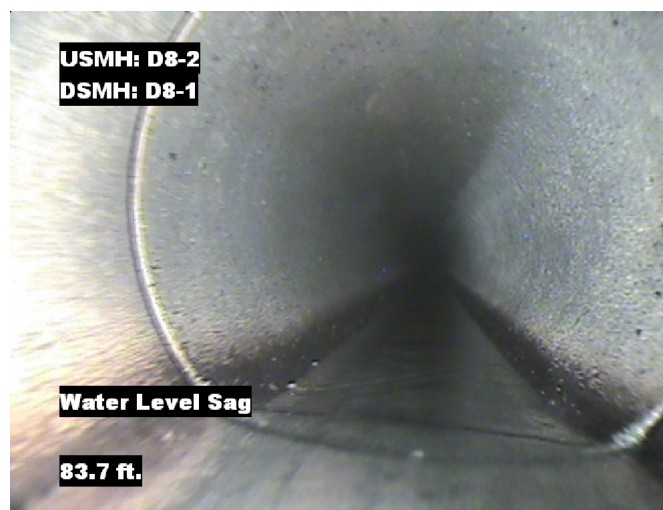
Distance: 0.0 ft. Grade: 0  
Condition: Access Point Manhole  
Remarks: D8-2



Distance: 0.0 ft. Grade: 0  
Condition: Water Level  
Remarks: N/A



Distance: 32.1 ft. Grade: 3  
Condition: Infiltration Dripper  
Remarks: N/A



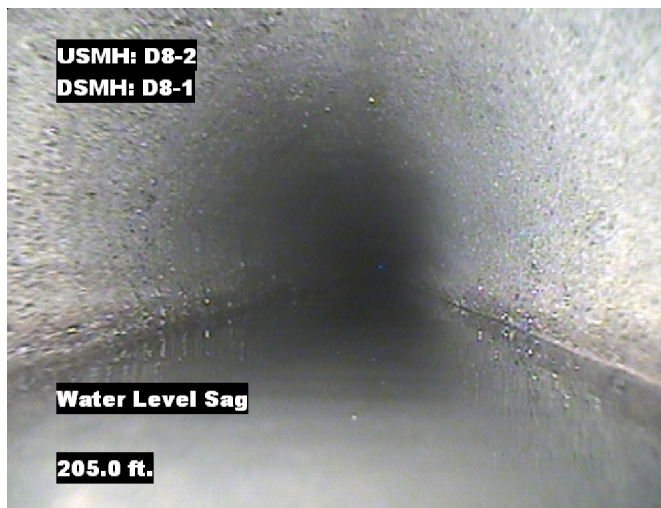
Distance: 83.6 ft. Grade: 2  
Condition: Water Level Sag  
Remarks: N/A





## Image Report 4/Page

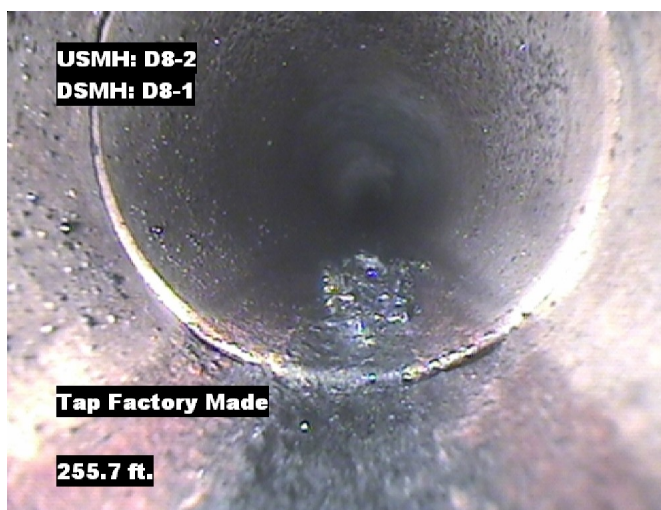
Pipe Segment Refere...	City	Street	Material	Location C...	Sewer Use
D8-2_D8-1	Oliver Springs	Highway#61 & #62	Concrete Pipe (non-...	Main Highw...	Sanitary
Upstream MH	Total Length	Year Laid	Shape	Location Details	
D8-2	338.7		Circular		
DS Manhole	Length surveyed	Year Renewed	Height	Width	Pipe Joint...
D8-1	338.7		8	8	4



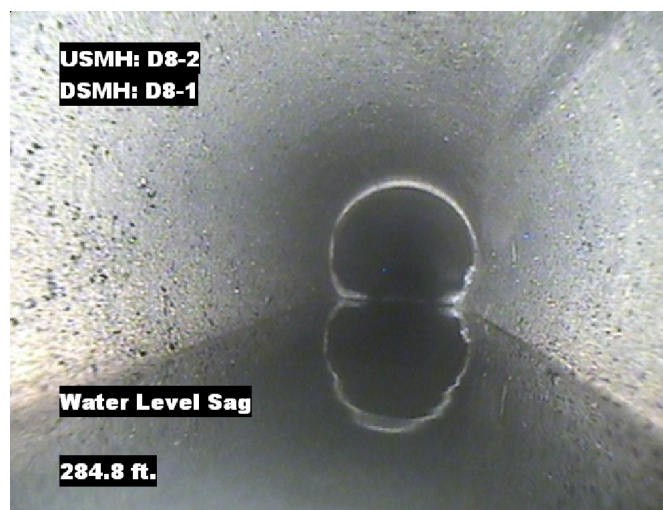
Distance: 204.9 ft. Grade: 2  
Condition: Water Level Sag  
Remarks: N/A



Distance: 242.5 ft. Grade: 2  
Condition: Water Level Sag  
Remarks: N/A



Distance: 255.7 ft. Grade: 0  
Condition: Tap Factory Made  
Remarks: N/A



Distance: 284.8 ft. Grade: 2  
Condition: Water Level Sag  
Remarks: N/A

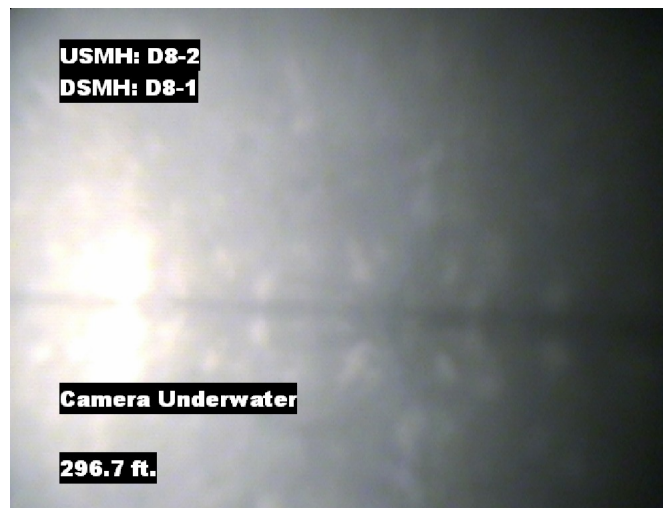


## Image Report 4/Page

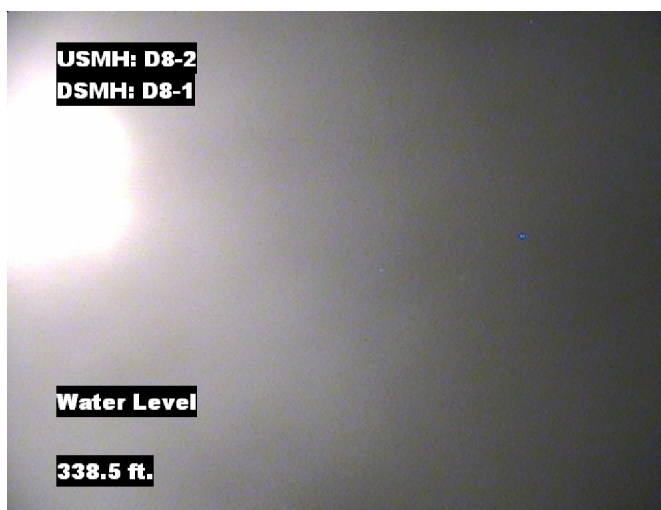
Pipe Segment Refere...	City	Street	Material	Location C...	Sewer Use
D8-2_D8-1	Oliver Springs	Highway#61 & #62	Concrete Pipe (non-...	Main Highw...	Sanitary
Upstream MH	Total Length	Year Laid	Shape	Location Details	
D8-2	338.7		Circular		
DS Manhole	Length surveyed	Year Renewed	Height	Width	Pipe Joint...
D8-1	338.7		8	8	4



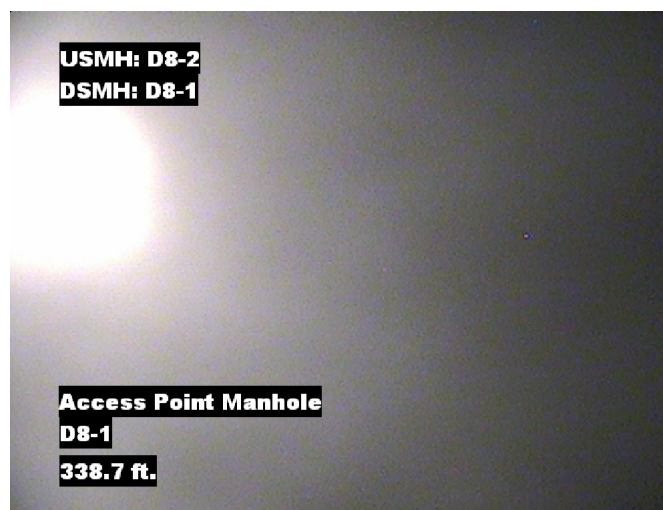
Distance: 288.7 ft. Grade: 5  
Condition: Infiltration Gusher  
Remarks: N/A



Distance: 296.7 ft. Grade: 4  
Condition: Camera Underwater  
Remarks: N/A



Distance: 338.5 ft. Grade: 0  
Condition: Water Level  
Remarks: N/A



Distance: 338.7 ft. Grade: 0  
Condition: Access Point Manhole  
Remarks: D8-1



## PACP Conditions

Pipe Segment Refere... <b>D8-2_D8-1</b>	City <b>Oliver Springs</b>	Street <b>Highway#61&amp; #62</b>	Material <b>Concrete Pipe (non-...</b>	Location C... <b>Main Highw...</b>	Sewer Use <b>Sanitary</b>
Upstream MH <b>D8-2</b>	Total Length <b>338.7</b>	Year Laid	Shape <b>Circular</b>	Location Details	
DS Manhole <b>D8-1</b>	Length surveyed <b>338.7</b>	Year Renewed	Height <b>8</b>	Width <b>8</b>	Pipe Joint... <b>4</b>
SPR <b>N/A</b>	MPR <b>20</b>	PO Number <b>4397-03</b>		Customer <b>GRW</b>	
SPRI <b>N/A</b>	MPRI <b>2.9</b>	Work Order <b>4397-02</b>		Purpose <b>Pre-Rehabilitation Survey</b>	
QSR <b>N/A</b>	QMR <b>5141</b>				
OPR <b>20</b>	Surveyed By <b>Barry Rogers</b>	Direction <b>Downstream</b>	Date <b>20150706</b>	Media label	
OPRI <b>2.9</b>	Certificate Number <b>U-1012-16405</b>	Pre-Cleaning <b>Jetting</b>	Time <b>08:15</b>	Weather <b>Dry</b>	
Date Cleaned <b>20150706</b>			End Time <b>08:37</b>	Additional Info	

Normal Defects			Structural Ratings			O & M Ratings			Combined Ratings		
			Grade Rating	No. Occur.	Rating	Grade Rating	No. Occur.	Rating	Grade Rating	No. Occur.	Rating
Continuous Defects			1	0	0	1	0	0	1	0	0
			2	0	0	2	4	8	2	4	8
			3	0	0	3	1	3	3	1	3
			4	0	0	4	1	4	4	1	4
			5	0	0	5	1	5	5	1	5
Code	ID	Length									