



Defect Listing

Pipe Segment Refere... D3-6_D3-5	City Oliver Springs	Street Easement at Norwood...	Material PolyVinyl Chloride	Location C... Easement/R...	Sewer Use Sanitary
Upstream MH D3-6	Total Length 164.3	Year Laid	Shape Circular	Location Details east side of School	
DS Manhole D3-5	Length surveyed 164.3	Year Renewed	Height 6	Width 6	Pipe Joint... 13

SPR N/A	MPR 31	PO Number 4397-03		Customer GRW	
SPRI N/A	MPRI 3.4	Work Order 4397-02		Purpose Pre-Rehabilitation Survey	
QSR N/A	QMR 4533				
OPR 31	Surveyed By Barry Rogers	Direction Upstream	Date 20150709	Media label	
OPRI 3.4	Certificate Number U-1012-16405	Pre-Cleaning Jetting	Time 14:03	Weather Dry	
Date Cleaned 20150709			End Time 14:13	Additional Info	

Distance	Condition	Cont. Dfct.	Values			Joint	Clock Position		Grade
			1st	2nd	%		At/From	To	
0.0 ft.	Access Point Manhole				0	<input type="checkbox"/>			
Remarks: D3-6									
0.0 ft.	Water Level				5	<input type="checkbox"/>			
31.1 ft.	Water Level Sag				10	<input type="checkbox"/>			2
58.2 ft.	Water Level Sag				40	<input type="checkbox"/>			3
99.6 ft.	Water Level Sag				40	<input type="checkbox"/>			3
117.4 ft.	Water Level Sag				40	<input type="checkbox"/>			3
118.3 ft.	Camera Underwater				0	<input type="checkbox"/>			4
154.6 ft.	Water Level Sag	S01			75	<input type="checkbox"/>			4
154.6 ft.	Camera Underwater	S02			0	<input type="checkbox"/>			4
163.7 ft.	Water Level Sag	F01			75	<input type="checkbox"/>			4
163.7 ft.	Camera Underwater	F02			0	<input type="checkbox"/>			4
163.7 ft.	Water Level				5	<input type="checkbox"/>			
164.3 ft.	Access Point Manhole				0	<input type="checkbox"/>			
Remarks: D3-5									

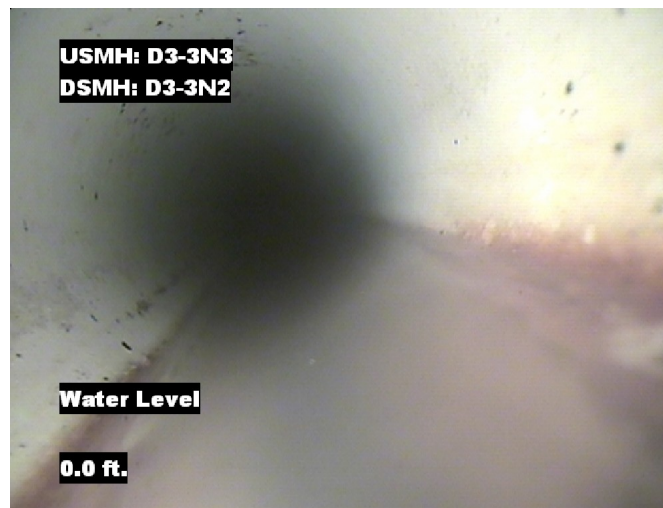


Image Report 4/Page

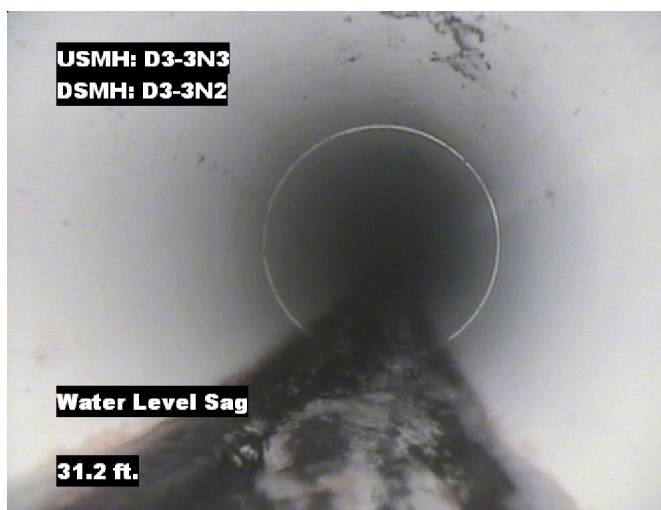
Pipe Segment Refere... D3-6_D3-5	City Oliver Springs	Street Easement at Norwood...	Material PolyVinyl Chloride		Location C... Easement/R...	Sewer Use Sanitary
Upstream MH D3-6	Total Length 164.3	Year Laid	Shape Circular		Location Details east side of School	
DS Manhole D3-5	Length surveyed 164.3	Year Renewed	Height 6	Width 6	Pipe Joint...	



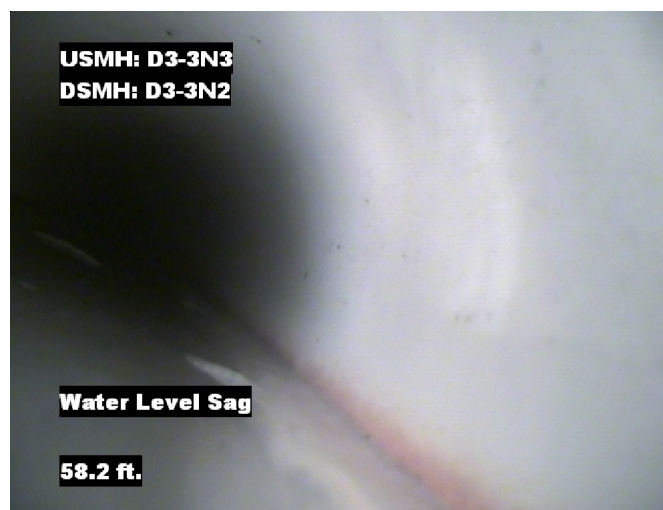
Distance: 0.0 ft. Grade: 0
Condition: Access Point Manhole
Remarks: D3-6



Distance: 0.0 ft. Grade: 0
Condition: Water Level
Remarks: N/A



Distance: 31.1 ft. Grade: 2
Condition: Water Level Sag
Remarks: N/A

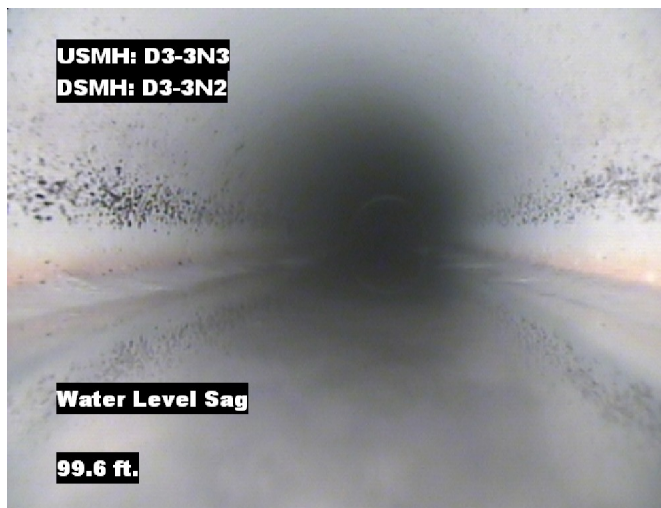


Distance: 58.2 ft. Grade: 3
Condition: Water Level Sag
Remarks: N/A

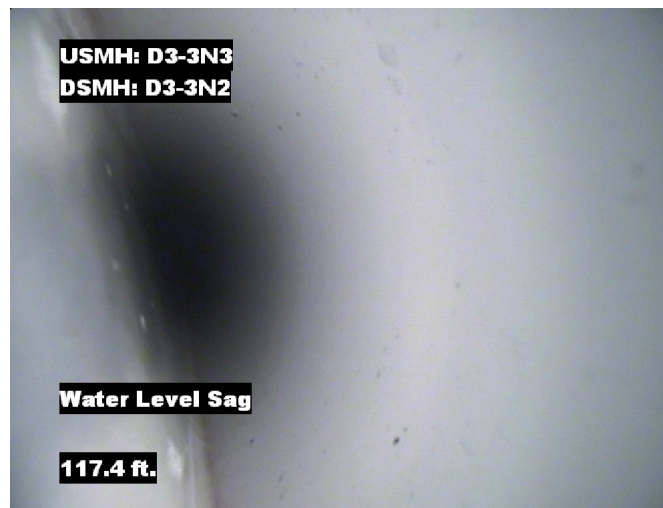


Image Report 4/Page

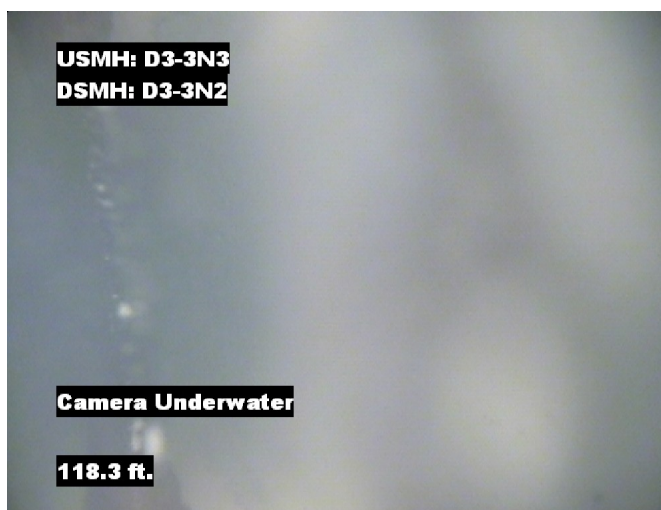
Pipe Segment Refere...	City	Street	Material	Location C...	Sewer Use
D3-6_D3-5	Oliver Springs	Easement at Norwood...	PolyVinyl Chloride	Easement/R...	Sanitary
Upstream MH	Total Length	Year Laid	Shape	Location Details	
D3-6	164.3		Circular	east side of School	
DS Manhole	Length surveyed	Year Renewed	Height	Width	Pipe Joint...
D3-5	164.3		6	6	13



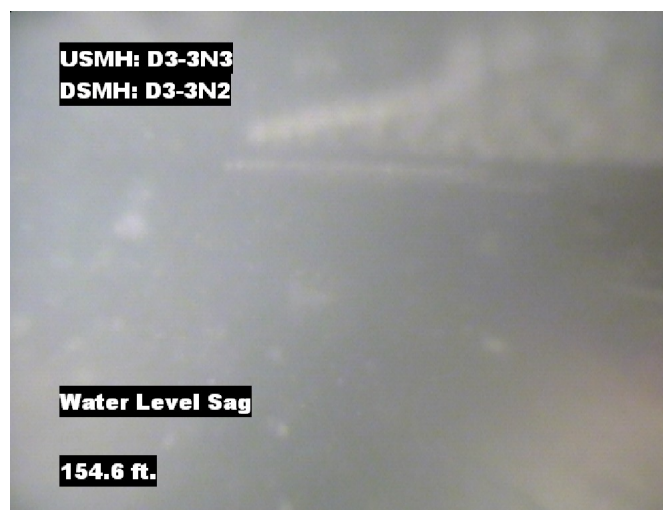
Distance: 99.6 ft. Grade: 3
Condition: Water Level Sag
Remarks: N/A



Distance: 117.4 ft. Grade: 3
Condition: Water Level Sag
Remarks: N/A



Distance: 118.3 ft. Grade: 4
Condition: Camera Underwater
Remarks: N/A

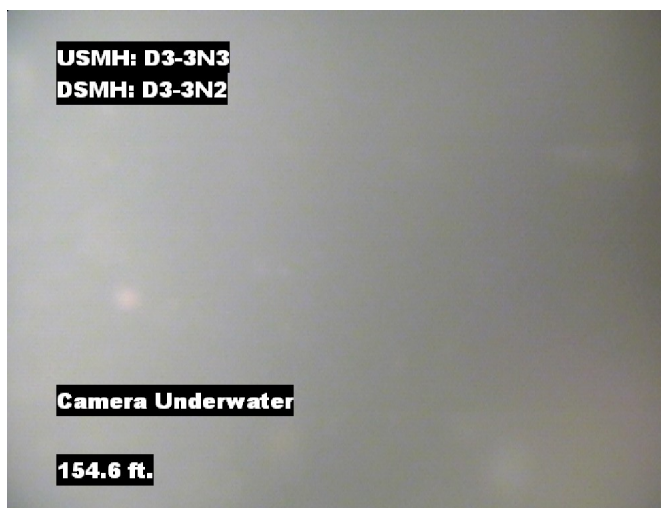


Distance: 154.6 ft. Grade: 4
Condition: Water Level Sag
Remarks: N/A



Image Report 4/Page

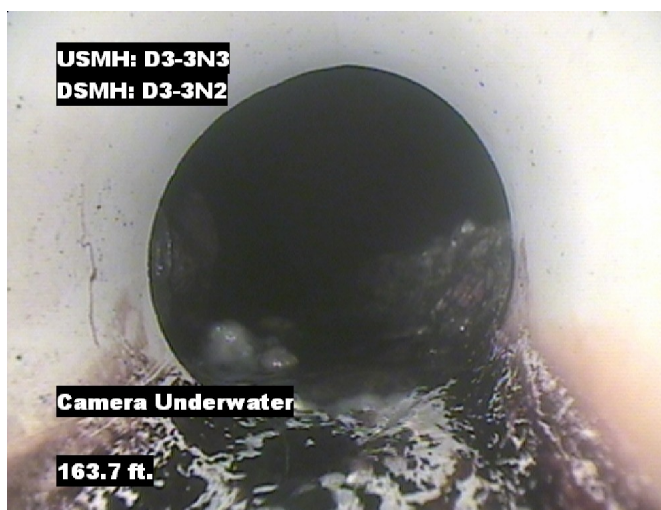
Pipe Segment Refere... D3-6_D3-5	City Oliver Springs	Street Easement at Norwood...	Material PolyVinyl Chloride		Location C... Easement/R...	Sewer Use Sanitary
Upstream MH D3-6	Total Length 164.3	Year Laid	Shape Circular		Location Details east side of School	
DS Manhole D3-5	Length surveyed 164.3	Year Renewed	Height 6	Width 6	Pipe Joint... 13	



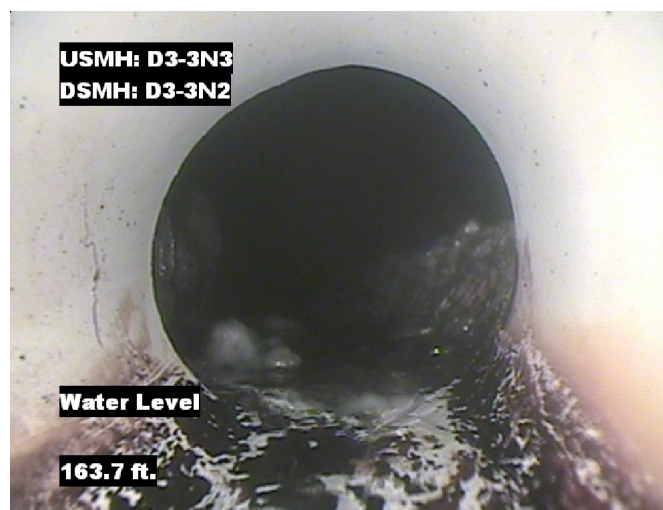
Distance: 154.6 ft. Grade: 4
Condition: Camera Underwater
Remarks: N/A



Distance: 163.7 ft. Grade: 4
Condition: Water Level Sag
Remarks: N/A



Distance: 163.7 ft. Grade: 4
Condition: Camera Underwater
Remarks: N/A

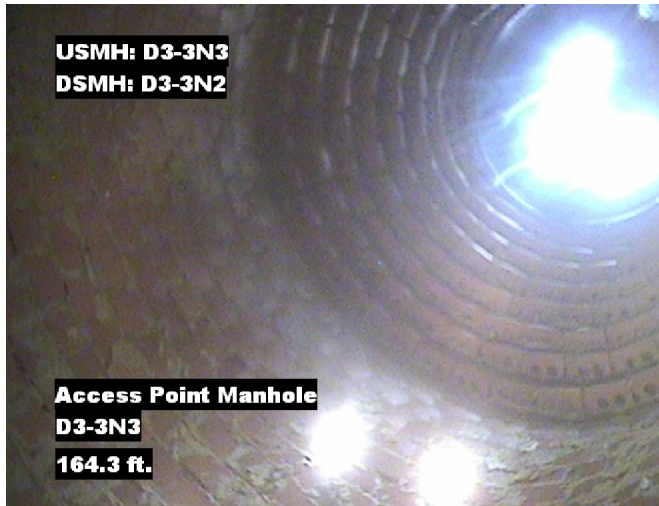


Distance: 163.7 ft. Grade: 0
Condition: Water Level
Remarks: N/A



Image Report 4/Page

Pipe Segment Refere... D3-6_D3-5	City Oliver Springs	Street Easement at Norwood...	Material PolyVinyl Chloride		Location C... Easement/R...	Sewer Use Sanitary
Upstream MH D3-6	Total Length 164.3	Year Laid	Shape Circular		Location Details east side of School	
DS Manhole D3-5	Length surveyed 164.3	Year Renewed	Height 6	Width 6	Pipe Joint... 13	



Distance: 164.3 ft. Grade: 0
Condition: Access Point Manhole
Remarks: D3-5



Pipe Segment Refere... D3-6_D3-5	City Oliver Springs	Street Easement at Norwood...	Material PolyVinyl Chloride		Location C... Easement/R...	Sewer Use Sanitary
Upstream MH D3-6	Total Length 164.3	Year Laid	Shape Circular		Location Details east side of School	
DS Manhole D3-5	Length surveyed 164.3	Year Renewed	Height 6	Width 6	Pipe Joint...	
SPR	N/A	MPR	PO Number 4397-03		Customer GRW	
SPRI	N/A	MPRI	Work Order 4397-02		Purpose Pre-Rehabilitation Survey	
QSR	N/A	QMR				
OPR 31	Surveyed By Barry_Rogers	Direction Upstream	Date 20150709		Media label	
OPRI 3.4	Certificate Number U-1012-16405	Pre-Cleaning Jetting	Time 14:03		Weather Dry	
Date Cleaned 20150709			End Time 14:13		Additional Info	

Page #: 6