



## Defect Listing

Pipe Segment Refere... <b>D21-6A_D21-6</b>	City <b>Oliver Springs</b>	Street <b>Duncan</b>	Material <b>Concrete Pipe (non-...</b>	Location C... <b>Light High...</b>	Sewer Use <b>Sanitary</b>
Upstream MH <b>D21-6A</b>	Total Length <b>201.7</b>	Year Laid	Shape <b>Circular</b>	Location Details <b>107</b>	
DS Manhole <b>D21-6</b>	Length surveyed <b>201.7</b>	Year Renewed	Height <b>8</b>	Width <b>8</b>	Pipe Joint... <b>4</b>

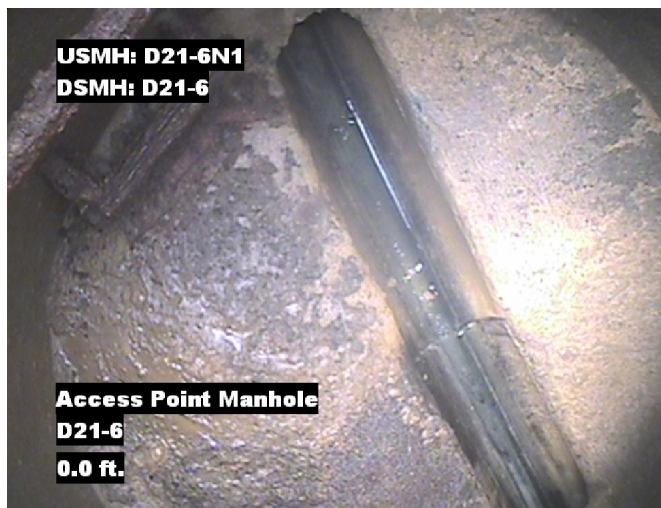
SPR <b>N/A</b>	MPR <b>N/A</b>	PO Number <b>4397-03</b>	Customer <b>GRW</b>
SPRI <b>N/A</b>	MPRI <b>N/A</b>	Work Order <b>4397-02</b>	Purpose <b>Pre-Rehabilitation Survey</b>
QSR <b>N/A</b>	QMR <b>N/A</b>		
OPR <b>N/A</b>	Surveyed By <b>Barry Rogers</b>	Direction <b>Upstream</b>	Date <b>20150624</b>
OPRI <b>N/A</b>	Certificate Number <b>U-1012-16405</b>	Pre-Cleaning <b>No Pre-Cleaning</b>	Time <b>10:07</b>
	Date Cleaned	End Time <b>10:32</b>	Weather <b>Dry</b>
		Additional Info	

Distance	Condition	Cont. Dfct.	Values			Joint	Clock Position		Grade
			1st	2nd	%		At/From	To	
0.0 ft.	Access Point Manhole				0	<input type="checkbox"/>			
Remarks: D21-6									
0.0 ft.	Water Level				5	<input type="checkbox"/>			
33.6 ft.	Tap Factory Made		6		0	<input type="checkbox"/>	3		
77.1 ft.	Tap Factory Made		4		0	<input type="checkbox"/>	9		
110.0 ft.	Tap Factory Made		4		0	<input type="checkbox"/>	3		
201.7 ft.	Survey Abandoned				0	<input type="checkbox"/>			
Remarks: can not pass debris									



## Image Report 4/Page

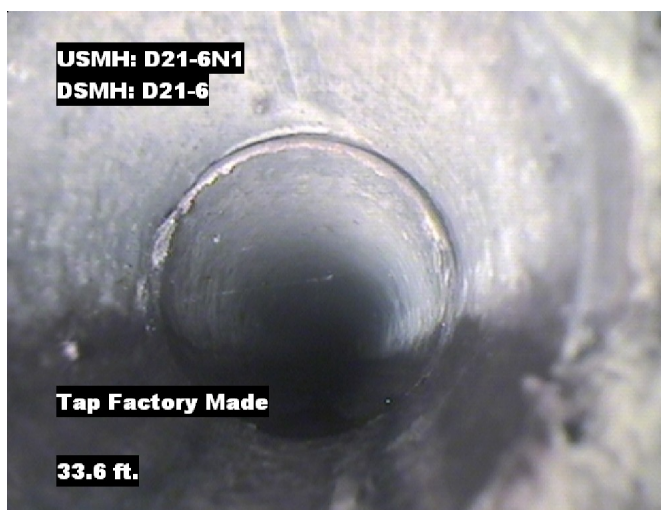
Pipe Segment Refere...	City	Street	Material	Location C...	Sewer Use
D21-6A_D21-6	Oliver Springs	Duncan	Concrete Pipe (non-...	Light High...	Sanitary
Upstream MH D21-6A	Total Length 201.7	Year Laid	Shape Circular	Location Details 107	
DS Manhole D21-6	Length surveyed 201.7	Year Renewed	Height 8	Width 8	Pipe Joint... 4



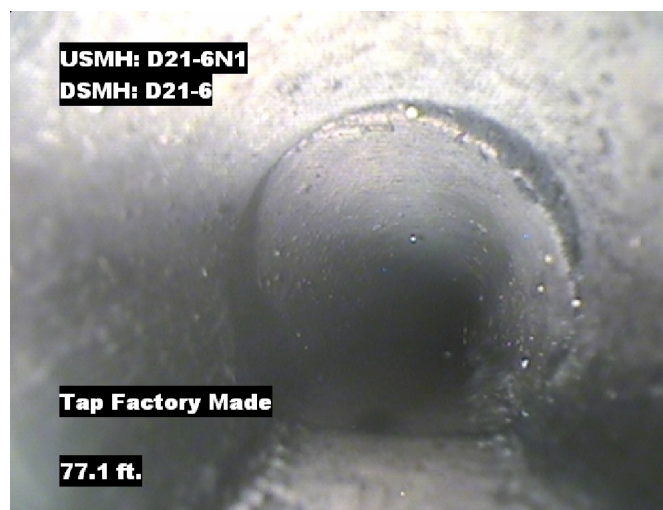
Distance: 0.0 ft. Grade: 0  
Condition: Access Point Manhole  
Remarks: D21-6



Distance: 0.0 ft. Grade: 0  
Condition: Water Level  
Remarks: N/A



Distance: 33.6 ft. Grade: 0  
Condition: Tap Factory Made  
Remarks: N/A

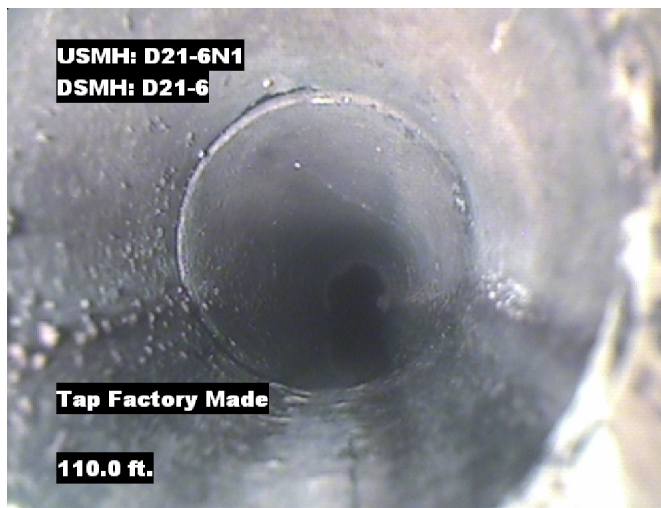


Distance: 77.1 ft. Grade: 0  
Condition: Tap Factory Made  
Remarks: N/A



## Image Report 4/Page

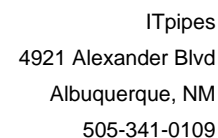
Pipe Segment Refere...	City	Street	Material	Location C...	Sewer Use
D21-6A_D21-6	Oliver Springs	Duncan	Concrete Pipe (non-...	Light High...	Sanitary
Upstream MH	Total Length	Year Laid	Shape	Location Details	
D21-6A	201.7		Circular	107	
DS Manhole	Length surveyed	Year Renewed	Height	Width	Pipe Joint...
D21-6	201.7		8	8	4



Distance: 110.0 ft. Grade: 0  
Condition: Tap Factory Made  
Remarks: N/A



Distance: 201.7 ft. Grade: 0  
Condition: Survey Abandoned  
Remarks: can not pass debris



Pipe Segment Refere... D21-6A_D21-6	City Oliver Springs	Street Duncan	Material Concrete Pipe (non-...		Location C... Light High...	Sewer Use Sanitary	
Upstream MH D21-6A	Total Length 201.7	Year Laid	Shape Circular		Location Details 107		
DS Manhole D21-6	Length surveyed 201.7	Year Renewed	Height 8	Width 8	Pipe Joint...		
SPR	N/A	MPR	N/A	PO Number 4397-03			Customer GRW
SPRI	N/A	MPRI	N/A	Work Order 4397-02			Purpose
QSR	N/A	QMR	N/A	Pre-Rehabilitation Survey			
OPR N/A	Surveyed By Barry_Rogers	Direction Upstream	Date 20150624		Media label		
OPRI N/A	Certificate Number U-1012-16405	Pre-Cleaning No Pre-Cleaning	Time 10:07		Weather Dry		
Date Cleaned			End Time 10:32		Additional Info		

Page #: 4