



## Defect Listing

Pipe Segment Refere... <b>D21-5A_D21-5B</b>	City <b>Oliver Springs</b>	Street <b>Kries Circle</b>	Material <b>Concrete Pipe (non-...</b>	Location C... <b>Light High...</b>	Sewer Use <b>Sanitary</b>
Upstream MH <b>D21-5A</b>	Total Length <b>N/A</b>	Year Laid	Shape <b>Circular</b>	Location Details <b>105 Kries Cir</b>	
DS Manhole <b>D21-5B</b>	Length surveyed <b>N/A</b>	Year Renewed	Height <b>6</b>	Width <b>6</b>	Pipe Joint... <b>4</b>

SPR <b>N/A</b>	MPR <b>N/A</b>	PO Number <b>4397-03</b>		Customer <b>GRW</b>	
SPRI <b>N/A</b>	MPRI <b>N/A</b>	Work Order <b>4397-02</b>		Purpose <b>Pre-Rehabilitation Survey</b>	
QSR <b>N/A</b>	QMR <b>N/A</b>				
OPR <b>N/A</b>	Surveyed By <b>Barry Rogers</b>	Direction <b>Downstream</b>	Date <b>20150624</b>	Media label	
OPRI <b>N/A</b>	Certificate Number <b>U-1012-16405</b>	Pre-Cleaning <b>No Pre-Cleaning</b>	Time <b>08:42</b>	Weather <b>Dry</b>	
Date Cleaned			End Time <b>08:43</b>	Additional Info <b>Cannot access inver...</b>	

Distance	Condition	Cont. Dfct.	Values			Joint	Clock Position		Grade
			1st	2nd	%		At/From	To	
0.0 ft.	Access Point Manhole				0	<input type="checkbox"/>			
Remarks: D21-5A									
0.0 ft.	Water Level				5	<input type="checkbox"/>			
0.0 ft.	Survey Abandoned				0	<input type="checkbox"/>			
Remarks: Cannot Access Pipe									



## Image Report 4/Page

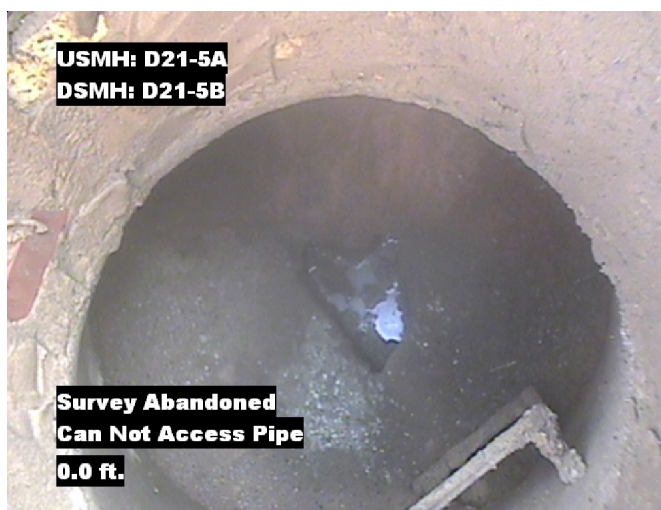
Pipe Segment Refere...	City	Street	Material	Location C...	Sewer Use
D21-5A_D21-5B	Oliver Springs	Kries Circle	Concrete Pipe (non-...	Light High...	Sanitary
Upstream MH	Total Length	Year Laid	Shape	Location Details	
D21-5A	N/A		Circular	105 Kries Cir	
DS Manhole	Length surveyed	Year Renewed	Height	Width	Pipe Joint...
D21-5B	N/A		6	6	4



Distance: 0.0 ft. Grade: 0  
Condition: Access Point Manhole  
Remarks: D21-5A



Distance: 0.0 ft. Grade: 0  
Condition: Water Level  
Remarks: N/A



Distance: 0.0 ft. Grade: 0  
Condition: Survey Abandoned  
Remarks: Cannot Access Pipe



## PACP Conditions

Pipe Segment Refere... <b>D21-5A_D21-5B</b>	City <b>Oliver Springs</b>	Street <b>Kries Circle</b>	Material <b>Concrete Pipe (non-...</b>	Location C... <b>Light High...</b>	Sewer Use <b>Sanitary</b>
Upstream MH <b>D21-5A</b>	Total Length <b>N/A</b>	Year Laid	Shape <b>Circular</b>	Location Details <b>105 Kries Cir</b>	
DS Manhole <b>D21-5B</b>	Length surveyed <b>N/A</b>	Year Renewed	Height <b>6</b>	Width <b>6</b>	Pipe Joint... <b>4</b>
SPR <b>N/A</b>	MPR <b>N/A</b>	PO Number <b>4397-03</b>		Customer <b>GRW</b>	
SPRI <b>N/A</b>	MPRI <b>N/A</b>	Work Order <b>4397-02</b>		Purpose <b>Pre-Rehabilitation Survey</b>	
QSR <b>N/A</b>	QMR <b>N/A</b>	Direction <b>Downstream</b>		Date <b>20150624</b>	
OPR <b>N/A</b>	Surveyed By <b>Barry Rogers</b>	Pre-Cleaning <b>No Pre-Cleaning</b>		Media label	
OPRI <b>N/A</b>	Certificate Number <b>U-1012-16405</b>	Time <b>08:42</b>		Weather <b>Dry</b>	
Date Cleaned			End Time <b>08:43</b>		Additional Info <b>Cannot access inver...</b>

			Structural Ratings			O & M Ratings			Combined Ratings		
			Grade Rating	No. Occur.	Rating	Grade Rating	No. Occur.	Rating	Grade Rating	No. Occur.	Rating
Normal Defects											
Continuous Defects			1	0	0	1	0	0	1	0	0
			2	0	0	2	0	0	2	0	0
			3	0	0	3	0	0	3	0	0
			4	0	0	4	0	0	4	0	0
			5	0	0	5	0	0	5	0	0
Code	ID	Length									