



## Defect Listing

Pipe Segment Refere... <b>D20-4_D20-3</b>	City <b>Oliver Springs</b>	Street <b>Airport RD</b>	Material <b>PolyVinyl Chloride</b>	Location C... <b>Yard</b>	Sewer Use <b>Sanitary</b>
Upstream MH <b>D20-4</b>	Total Length <b>280.7</b>	Year Laid	Shape <b>Circular</b>	Location Details <b>Side of Yard</b>	
DS Manhole <b>D20-3</b>	Length surveyed <b>280.7</b>	Year Renewed	Height <b>8</b>	Width <b>8</b>	Pipe Joint... <b>13</b>

SPR <b>N/A</b>	MPR <b>4</b>	PO Number <b>4397-03</b>		Customer <b>GRW</b>	
SPRI <b>N/A</b>	MPRI <b>2</b>	Work Order <b>4397-02</b>		Purpose <b>Pre-Rehabilitation Survey</b>	
QSR <b>N/A</b>	QMR <b>2200</b>				
OPR <b>4</b>	Surveyed By <b>Barry Rogers</b>	Direction <b>Downstream</b>	Date <b>20150603</b>	Media label	
OPRI <b>2</b>	Certificate Number <b>U-1012-16405</b>	Pre-Cleaning <b>Jetting</b>	Time <b>08:45</b>	Weather <b>Dry</b>	
Date Cleaned <b>20150603</b>			End Time <b>09:04</b>	Additional Info	

Distance	Condition	Cont. Dfct.	Values			Joint	Clock Position		Grade
			1st	2nd	%		At/From	To	
0.0 ft.	Access Point Manhole				0	<input type="checkbox"/>			
Remarks: D20-4									
0.0 ft.	Water Level				5	<input type="checkbox"/>			
46.2 ft.	Water Level Sag				15	<input type="checkbox"/>			2
274.3 ft.	Water Level Sag				15	<input type="checkbox"/>			2
278.3 ft.	Water Level				5	<input type="checkbox"/>			
280.7 ft.	Access Point Manhole				0	<input type="checkbox"/>			
Remarks: D20-3									

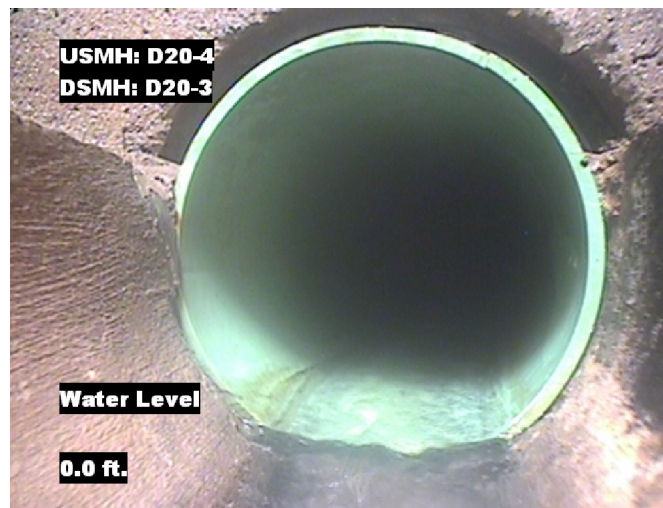


## Image Report 4/Page

Pipe Segment Refere... <b>D20-4_D20-3</b>	<b>City</b> <b>Oliver Springs</b>	<b>Street</b> <b>Airport RD</b>	<b>Material</b> <b>PolyVinyl Chloride</b>		<b>Location C...</b> <b>Yard</b>	<b>Sewer Use</b> <b>Sanitary</b>
<b>Upstream MH</b> <b>D20-4</b>	Total Length <b>280.7</b>	Year Laid	<b>Shape</b> <b>Circular</b>		Location Details <b>Side of Yard</b>	
<b>DS Manhole</b> <b>D20-3</b>	<b>Length surveyed</b> <b>280.7</b>	Year Renewed	<b>Height</b> <b>8</b>	Width <b>8</b>	Pipe Joint... <b>13</b>	



Distance: 0.0 ft. Grade: 0  
Condition: Access Point Manhole  
Remarks: D20-4



Distance: 0.0 ft. Grade: 0  
Condition: Water Level  
Remarks: N/A



Distance: 46.2 ft. Grade: 2  
Condition: Water Level Sag  
Remarks: N/A

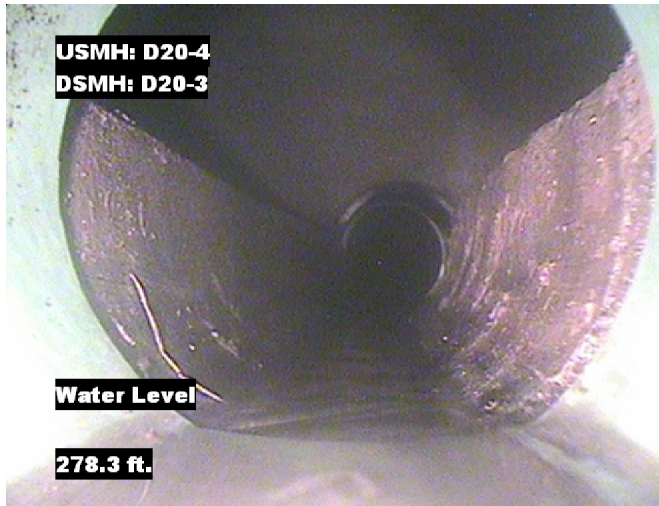


Distance: 274.3 ft. Grade: 2  
Condition: Water Level Sag  
Remarks: N/A



## Image Report 4/Page

Pipe Segment Refere... <b>D20-4_D20-3</b>	<b>City</b> <b>Oliver Springs</b>	<b>Street</b> <b>Airport RD</b>	<b>Material</b> <b>PolyVinyl Chloride</b>		<b>Location C...</b> <b>Yard</b>	<b>Sewer Use</b> <b>Sanitary</b>
<b>Upstream MH</b> <b>D20-4</b>	Total Length <b>280.7</b>	Year Laid	<b>Shape</b> <b>Circular</b>		Location Details <b>Side of Yard</b>	
<b>DS Manhole</b> <b>D20-3</b>	<b>Length surveyed</b> <b>280.7</b>	Year Renewed	<b>Height</b> <b>8</b>	Width <b>8</b>	Pipe Joint... <b>13</b>	



Distance: 278.3 ft.      Grade: 0  
Condition: Water Level  
Remarks: N/A



Distance: 280.7 ft.      Grade: 0  
Condition: Access Point Manhole  
Remarks: D20-3



Pipe Segment Refere... D20-4_D20-3	City Oliver Springs	Street Airport RD	Material PolyVinyl Chloride		Location C... Yard	Sewer Use Sanitary
Upstream MH D20-4	Total Length 280.7	Year Laid	Shape Circular		Location Details Side of Yard	
DS Manhole D20-3	Length surveyed 280.7	Year Renewed	Height 8	Width 8	Pipe Joint... 13	
SPR N/A	MPR 4	PO Number 4397-03		Customer GRW		
SPRI N/A	MPRI 2	Work Order 4397-02		Purpose Pre-Rehabilitation Survey		
QSR N/A	QMR 2200					
OPR 4	Surveyed By Barry_Rogers	Direction Downstream	Date 20150603		Media label	
OPRI 2	Certificate Number U-1012-16405	Pre-Cleaning Jetting	Time 08:45		Weather Dry	
Date Cleaned 20150603			End Time 09:04		Additional Info	

			Structural Ratings			O & M Ratings			Combined Ratings		
			Grade Rating	No. Occur.	Rating	Grade Rating	No. Occur.	Rating	Grade Rating	No. Occur.	Rating
Normal Defects											
<div>Continuous Defects</div> <div><div>CodeIDLength</div><div></div><div></div></div>			1	0	0	1	0	0	1	0	0
			2	0	0	2	2	4	2	2	4
			3	0	0	3	0	0	3	0	0
			4	0	0	4	0	0	4	0	0
			5	0	0	5	0	0	5	0	0
			Subtotals	0		Subtotals	2		Subtotals	2	
SUMMARY			Pipe Rating Structural Index Str. Quick Rating	0 0 0000		Pipe Rating O&M Index O&M Quick Rating	4 2.0 2200		Overall Pipe Rating Overall Index Ovrl. Quick Rating	4 2.0 2200	