



## Defect Listing

Pipe Segment Refere... <b>D20-14_D20-13</b>	City <b>Oliver Springs</b>	Street <b>Airport Rd</b>	Material <b>PolyVinyl Chloride</b>	Location C... <b>Easement/R...</b>	Sewer Use <b>Sanitary</b>
Upstream MH <b>D20-14</b>	Total Length <b>225</b>	Year Laid	Shape <b>Circular</b>	Location Details <b>Side of Road</b>	
DS Manhole <b>D20-13</b>	Length surveyed <b>225</b>	Year Renewed	Height <b>8</b>	Width <b>8</b>	Pipe Joint... <b>13</b>

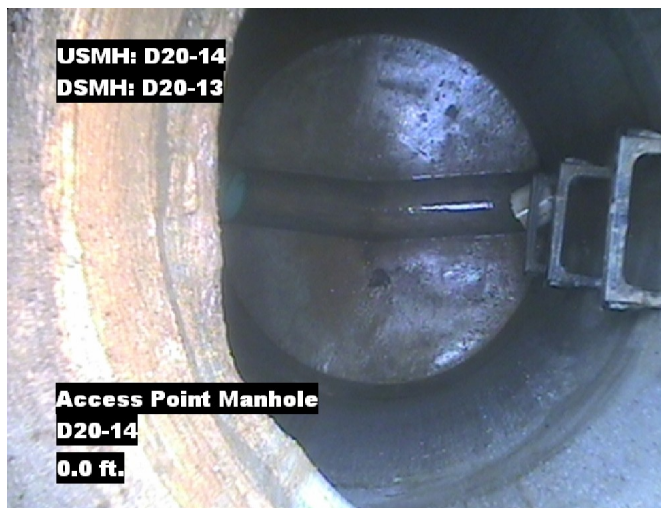
SPR <b>N/A</b>	MPR <b>N/A</b>	PO Number <b>4397-03</b>		Customer <b>GRW</b>	
SPRI <b>N/A</b>	MPRI <b>N/A</b>	Work Order <b>4397-02</b>		Purpose <b>Pre-Rehabilitation Survey</b>	
QSR <b>N/A</b>	QMR <b>N/A</b>				
OPR <b>N/A</b>	Surveyed By <b>Barry Rogers</b>	Direction <b>Downstream</b>	Date <b>20150601</b>	Media label	
OPRI <b>N/A</b>	Certificate Number <b>U-1012-16405</b>	Pre-Cleaning <b>Jetting</b>	Time <b>09:34</b>	Weather <b>Saturated</b>	
Date Cleaned <b>20150601</b>			End Time <b>09:57</b>	Additional Info	

Distance	Condition	Cont. Dfct.	Values			Joint	Clock Position		Grade
			1st	2nd	%		At/From	To	
0.0 ft.	Access Point Manhole				0	<input type="checkbox"/>			
Remarks: D20-14									
0.0 ft.	Water Level				5	<input type="checkbox"/>			
148.3 ft.	Tap Factory Made		6		0	<input checked="" type="checkbox"/>	3		
222.4 ft.	Water Level				5	<input type="checkbox"/>			
225.0 ft.	Access Point Manhole				0	<input type="checkbox"/>			
Remarks: D20-13									

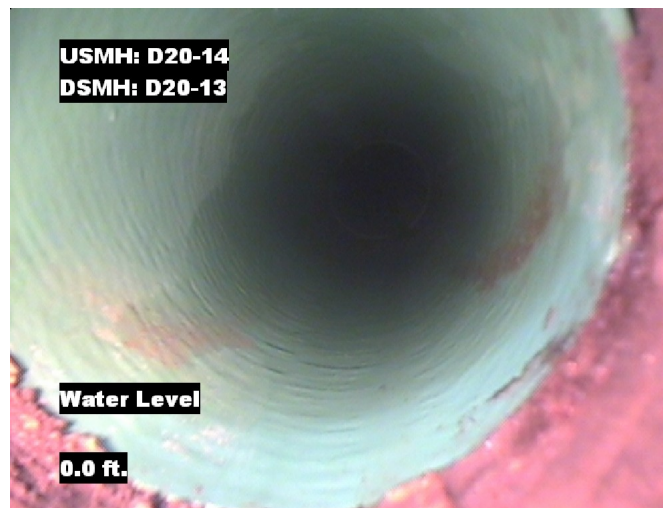


## Image Report 4/Page

Pipe Segment Refere...	City	Street	Material	Location C...	Sewer Use
D20-14_D20-13	Oliver Springs	Airport Rd	PolyVinyl Chloride	Easement/R...	Sanitary
Upstream MH D20-14	Total Length 225	Year Laid	Shape Circular	Location Details Side of Road	
DS Manhole D20-13	Length surveyed 225	Year Renewed	Height 8	Width 8	Pipe Joint... 13



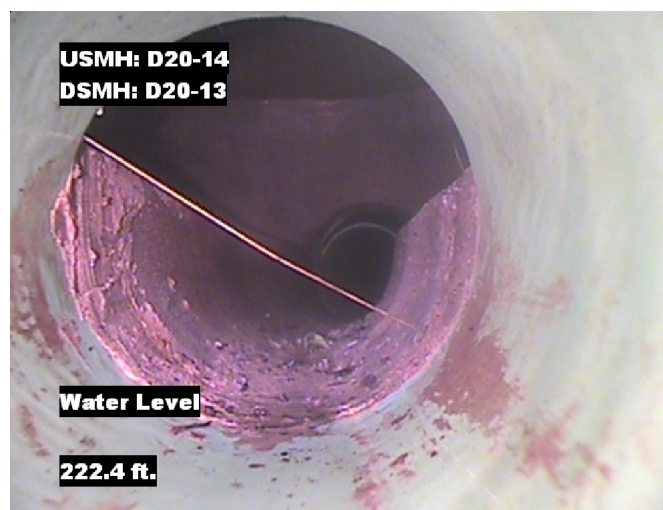
Distance: 0.0 ft. Grade: 0  
Condition: Access Point Manhole  
Remarks: D20-14



Distance: 0.0 ft. Grade: 0  
Condition: Water Level  
Remarks: N/A



Distance: 148.3 ft. Grade: 0  
Condition: Tap Factory Made  
Remarks: N/A

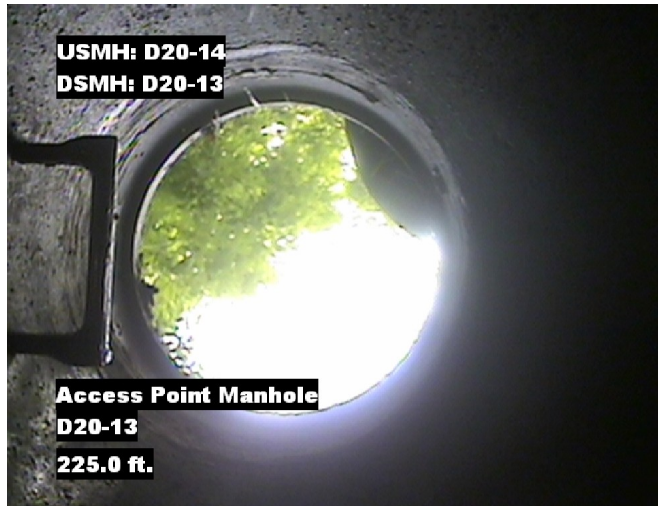


Distance: 222.4 ft. Grade: 0  
Condition: Water Level  
Remarks: N/A



## Image Report 4/Page

Pipe Segment Refere...	City	Street	Material	Location C...	Sewer Use
D20-14_D20-13	Oliver Springs	Airport Rd	PolyVinyl Chloride	Easement/R...	Sanitary
Upstream MH	Total Length	Year Laid	Shape	Location Details	
D20-14	225		Circular	Side of Road	
DS Manhole	Length surveyed	Year Renewed	Height	Width	Pipe Joint...
D20-13	225		8	8	13



Distance: 225.0 ft. Grade: 0  
Condition: Access Point Manhole  
Remarks: D20-13



Pipe Segment Refere... D20-14_D20-13	City Oliver Springs	Street Airport Rd	Material PolyVinyl Chloride		Location C... Easement/R...	Sewer Use Sanitary
Upstream MH D20-14	Total Length 225	Year Laid	Shape Circular		Location Details Side of Road	
DS Manhole D20-13	Length surveyed 225	Year Renewed	Height 8	Width 8	Pipe Joint... 13	
SPR N/A	MPR N/A	PO Number 4397-03		Customer GRW		
SPRI N/A	MPRI N/A	Work Order 4397-02		Purpose		
QSR N/A	QMR N/A			Pre-Rehabilitation Survey		
OPR N/A	Surveyed By Barry_Rogers	Direction Downstream	Date 20150601		Media label	
OPRI N/A	Certificate Number U-1012-16405	Pre-Cleaning Jetting	Time 09:34		Weather Saturated	
Date Cleaned 20150601			End Time 09:57		Additional Info	

Page #: 4