



## Defect Listing

Pipe Segment Refere... <b>D19-10_D19-9</b>	City <b>Oliver Springs</b>	Street <b>Chickapin lane</b>	Material <b>Concrete Pipe (non-...</b>	Location C... <b>Light High...</b>	Sewer Use <b>Sanitary</b>
Upstream MH <b>D19-10</b>	Total Length <b>280.3</b>	Year Laid	Shape <b>Circular</b>	Location Details	
DS Manhole <b>D19-9</b>	Length surveyed <b>280.3</b>	Year Renewed	Height <b>8</b>	Width <b>8</b>	Pipe Joint... <b>4</b>

SPR <b>N/A</b>	MPR <b>2</b>	PO Number <b>4397-03</b>		Customer <b>GRW</b>	
SPRI <b>N/A</b>	MPRI <b>2</b>	Work Order <b>4397-02</b>		Purpose <b>Pre-Rehabilitation Survey</b>	
QSR <b>N/A</b>	QMR <b>2100</b>				
OPR <b>2</b>	Surveyed By <b>Barry Rogers</b>	Direction <b>Downstream</b>	Date <b>20150626</b>	Media label	
OPRI <b>2</b>	Certificate Number <b>U-1012-16405</b>	Pre-Cleaning <b>No Pre-Cleaning</b>	Time <b>13:55</b>	Weather <b>Very Dry</b>	
Date Cleaned			End Time <b>14:20</b>	Additional Info	

Distance	Condition	Cont. Dfct.	Values			Joint	Clock Position		Grade
			1st	2nd	%		At/From	To	
▲ 0.0 ft.	Access Point Manhole				0	<input type="checkbox"/>			
Remarks: D19-10									
▲ 0.0 ft.	Water Level				5	<input type="checkbox"/>			
▲ 74.4 ft.	Tap Break-In		4		0	<input type="checkbox"/>	11	11	
▲ 102.6 ft.	Roots Tap Connection				10	<input type="checkbox"/>	3	3	2
▲ 102.6 ft.	Tap Factory Made		4		0	<input type="checkbox"/>	3	3	
▲ 195.0 ft.	Tap Factory Made		4		0	<input type="checkbox"/>	10	10	
▲ 199.2 ft.	Tap Factory Made		6		0	<input type="checkbox"/>	3	3	
▲ 276.3 ft.	Water Level				5	<input type="checkbox"/>			
▲ 280.3 ft.	Access Point Manhole				0	<input type="checkbox"/>			
Remarks: D19-8(D19-9)									



## Image Report 4/Page

Pipe Segment Refere...	City	Street	Material	Location C...	Sewer Use
D19-10_D19-9	Oliver Springs	Chickapin lane	Concrete Pipe (non-...	Light High...	Sanitary
Upstream MH D19-10	Total Length 280.3	Year Laid	Shape Circular	Location Details	
DS Manhole D19-9	Length surveyed 280.3	Year Renewed	Height 8	Width 8	Pipe Joint... 4



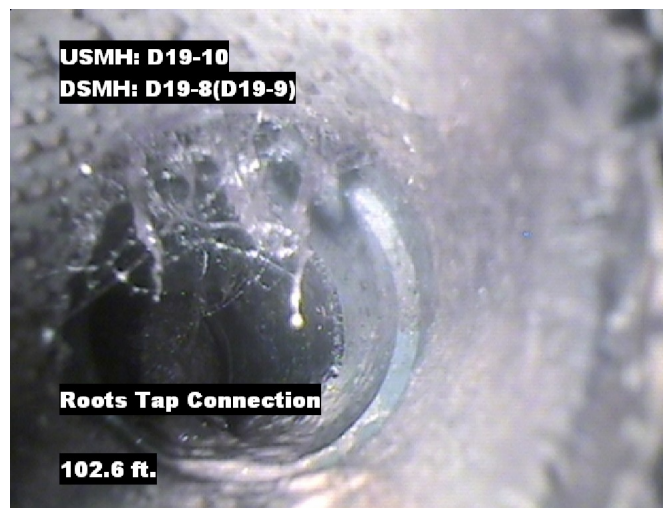
Distance: 0.0 ft. Grade: 0  
Condition: Access Point Manhole  
Remarks: D19-10



Distance: 0.0 ft. Grade: 0  
Condition: Water Level  
Remarks: N/A



Distance: 74.4 ft. Grade: 0  
Condition: Tap Break-In  
Remarks: N/A



Distance: 102.6 ft. Grade: 2  
Condition: Roots Tap Connection  
Remarks: N/A



## Image Report 4/Page

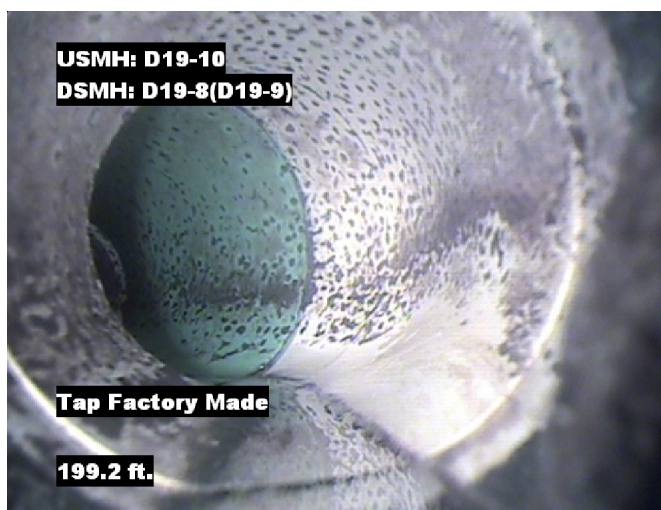
Pipe Segment Refere...	City	Street	Material	Location C...	Sewer Use
D19-10_D19-9	Oliver Springs	Chickapin lane	Concrete Pipe (non-...	Light High...	Sanitary
Upstream MH D19-10	Total Length 280.3	Year Laid	Shape Circular	Location Details	
DS Manhole D19-9	Length surveyed 280.3	Year Renewed	Height 8	Width 8	Pipe Joint... 4



Distance: 102.6 ft. Grade: 0  
Condition: Tap Factory Made  
Remarks: N/A



Distance: 195.0 ft. Grade: 0  
Condition: Tap Factory Made  
Remarks: N/A



Distance: 199.2 ft. Grade: 0  
Condition: Tap Factory Made  
Remarks: N/A



Distance: 276.3 ft. Grade: 0  
Condition: Water Level  
Remarks: N/A





## Image Report 4/Page

Pipe Segment Refere...	City	Street	Material	Location C...	Sewer Use
<b>D19-10_D19-9</b>	<b>Oliver Springs</b>	<b>Chickapin lane</b>	<b>Concrete Pipe (non-...</b>	<b>Light High...</b>	<b>Sanitary</b>
<b>Upstream MH</b> <b>D19-10</b>	Total Length <b>280.3</b>	Year Laid	<b>Shape</b> <b>Circular</b>	Location Details	
<b>DS Manhole</b> <b>D19-9</b>	<b>Length surveyed</b> <b>280.3</b>	Year Renewed	<b>Height</b> <b>8</b>	Width <b>8</b>	Pipe Joint... <b>4</b>



Distance: 280.3 ft.      Grade: 0  
Condition: Access Point Manhole  
Remarks: D19-8(D19-9)



## PACP Conditions

Pipe Segment Refere... <b>D19-10_D19-9</b>	City <b>Oliver Springs</b>	Street <b>Chickapin lane</b>	Material <b>Concrete Pipe (non-...</b>	Location C... <b>Light High...</b>	Sewer Use <b>Sanitary</b>
Upstream MH <b>D19-10</b>	Total Length <b>280.3</b>	Year Laid	Shape <b>Circular</b>	Location Details	
DS Manhole <b>D19-9</b>	Length surveyed <b>280.3</b>	Year Renewed	Height <b>8</b>	Width <b>8</b>	Pipe Joint... <b>4</b>
SPR <b>N/A</b>	MPR <b>2</b>	PO Number <b>4397-03</b>		Customer <b>GRW</b>	
SPRI <b>N/A</b>	MPRI <b>2</b>	Work Order <b>4397-02</b>		Purpose <b>Pre-Rehabilitation Survey</b>	
QSR <b>N/A</b>	QMR <b>2100</b>				
OPR <b>2</b>	Surveyed By <b>Barry Rogers</b>	Direction <b>Downstream</b>	Date <b>20150626</b>	Media label	
OPRI <b>2</b>	Certificate Number <b>U-1012-16405</b>	Pre-Cleaning <b>No Pre-Cleaning</b>	Time <b>13:55</b>	Weather <b>Very Dry</b>	
Date Cleaned			End Time <b>14:20</b>	Additional Info	

Normal Defects			Structural Ratings			O & M Ratings			Combined Ratings		
			Grade Rating	No. Occur.	Rating	Grade Rating	No. Occur.	Rating	Grade Rating	No. Occur.	Rating
			1	0	0	1	0	0	1	0	0
			2	0	0	2	1	2	2	1	2
			3	0	0	3	0	0	3	0	0
			4	0	0	4	0	0	4	0	0
			5	0	0	5	0	0	5	0	0
Continuous Defects											
Code	ID	Length									
			Subtotals	0		Subtotals	1		Subtotals	1	
SUMMARY			Pipe Rating	0		Pipe Rating	2		Overall Pipe Rating	2	
			Structural Index	0		O&M Index	2.0		Overall Index	2.0	
			Str. Quick Rating	0000		O&M Quick Rating	2100		Ovrl. Quick Rating	2100	