



## Defect Listing

Pipe Segment Refere... <b>D11-8_D13-1</b>	City <b>Oliver Springs</b>	Street <b>Norwood Dr</b>	Material <b>Concrete Pipe (non-...</b>	Location C... <b>Light High...</b>	Sewer Use <b>Sanitary</b>
Upstream MH <b>D11-8</b>	Total Length <b>194.3</b>	Year Laid	Shape <b>Circular</b>	Location Details	
DS Manhole <b>D13-1</b>	Length surveyed <b>194.3</b>	Year Renewed	Height <b>8</b>	Width <b>8</b>	Pipe Joint... <b>4</b>

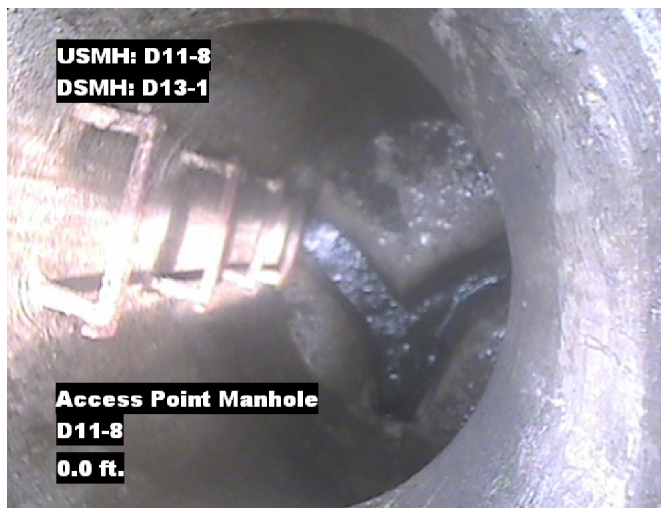
SPR <b>N/A</b>	MPR <b>2</b>	PO Number <b>4397-03</b>	Customer <b>GRW</b>
SPRI <b>N/A</b>	MPRI <b>2</b>	Work Order <b>4397-02</b>	Purpose <b>Pre-Rehabilitation Survey</b>
QSR <b>N/A</b>	QMR <b>2100</b>		
OPR <b>2</b>	Surveyed By <b>Barry Rogers</b>	Direction <b>Downstream</b>	Date <b>20150623</b>
OPRI <b>2</b>	Certificate Number <b>U-1012-16405</b>	Pre-Cleaning <b>Jetting</b>	Time <b>12:15</b>
	Date Cleaned <b>20150623</b>	End Time <b>12:24</b>	Weather <b>Dry</b>
			Additional Info

Distance	Condition	Cont. Dfct.	Values			Joint	Clock Position		Grade
			1st	2nd	%		At/From	To	
0.0 ft.	Access Point Manhole				0	<input type="checkbox"/>			
Remarks: D11-8									
0.0 ft.	Water Level				5	<input type="checkbox"/>			
138.7 ft.	Tap Factory Made		6		0	<input type="checkbox"/>	9		
151.8 ft.	Tap Factory Made		6		0	<input type="checkbox"/>	3		
188.2 ft.	Water Level Sag				15	<input type="checkbox"/>			2
194.3 ft.	Access Point Manhole				0	<input type="checkbox"/>			
Remarks: D13-1									

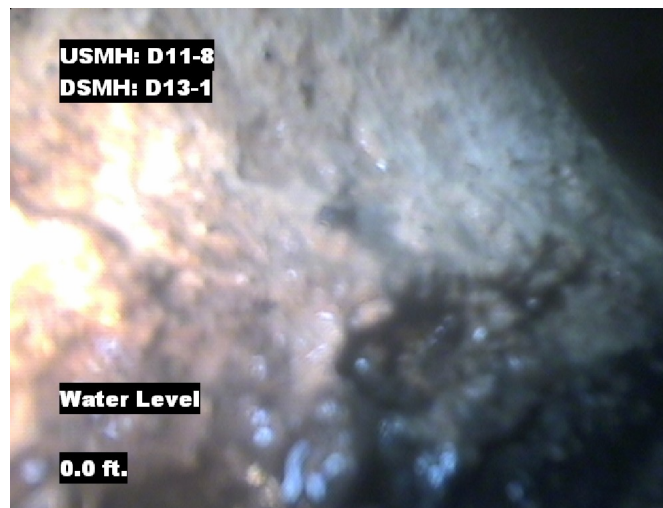


## Image Report 4/Page

Pipe Segment Refere...	City	Street	Material	Location C...	Sewer Use
D11-8_D13-1	Oliver Springs	Norwood Dr	Concrete Pipe (non-...	Light High...	Sanitary
Upstream MH	Total Length	Year Laid	Shape	Location Details	
D11-8	194.3		Circular		
DS Manhole	Length surveyed	Year Renewed	Height	Width	Pipe Joint...
D13-1	194.3		8	8	4



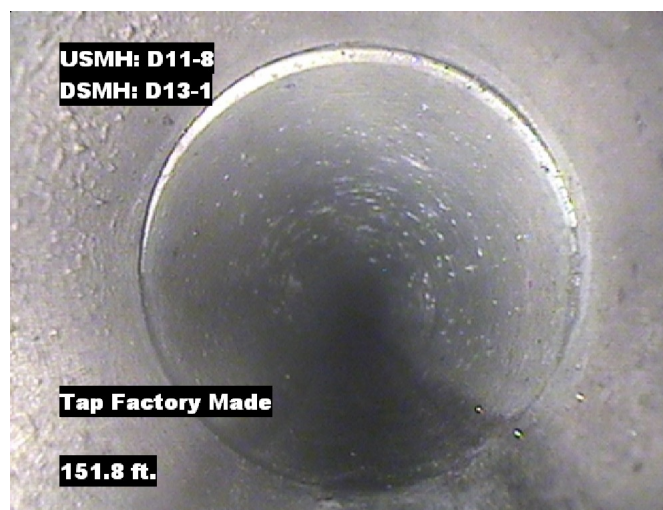
Distance: 0.0 ft. Grade: 0  
Condition: Access Point Manhole  
Remarks: D11-8



Distance: 0.0 ft. Grade: 0  
Condition: Water Level  
Remarks: N/A



Distance: 138.7 ft. Grade: 0  
Condition: Tap Factory Made  
Remarks: N/A



Distance: 151.8 ft. Grade: 0  
Condition: Tap Factory Made  
Remarks: N/A

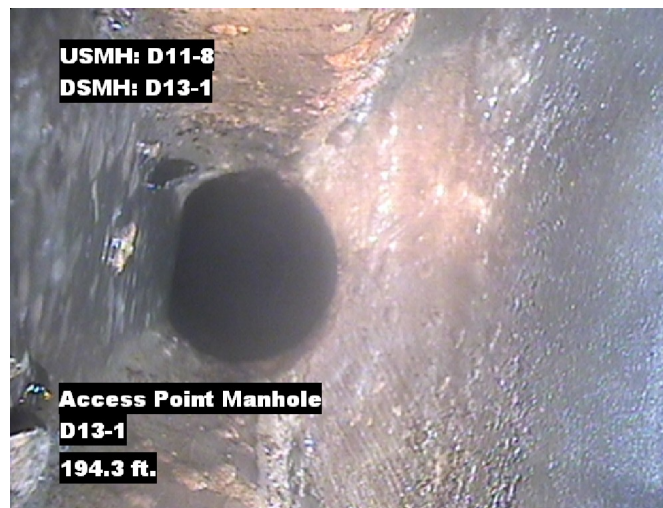


## Image Report 4/Page

Pipe Segment Refere...	City	Street	Material	Location C...	Sewer Use
D11-8_D13-1	Oliver Springs	Norwood Dr	Concrete Pipe (non-...	Light High...	Sanitary
Upstream MH D11-8	Total Length 194.3	Year Laid	Shape Circular	Location Details	
DS Manhole D13-1	Length surveyed 194.3	Year Renewed	Height 8	Width 8	Pipe Joint... 4



Distance: 188.2 ft. Grade: 2  
Condition: Water Level Sag  
Remarks: N/A



Distance: 194.3 ft. Grade: 0  
Condition: Access Point Manhole  
Remarks: D13-1



Pipe Segment Refere... D11-8_D13-1	City Oliver Springs	Street Norwood Dr	Material Concrete Pipe (non-...		Location C... Light High...	Sewer Use Sanitary
Upstream MH D11-8	Total Length 194.3	Year Laid	Shape Circular		Location Details	
DS Manhole D13-1	Length surveyed 194.3	Year Renewed	Height 8	Width 8	Pipe Joint... 4	
SPR N/A	MPR 2	PO Number 4397-03		Customer GRW		
SPRI N/A	MPRI 2	Work Order 4397-02		Purpose		
QSR N/A	QMR 2100			Pre-Rehabilitation Survey		
OPR 2	Surveyed By Barry_Rogers	Direction Downstream	Date 20150623		Media label	
OPRI 2	Certificate Number U-1012-16405	Pre-Cleaning Jetting	Time 12:15		Weather Dry	
Date Cleaned 20150623			End Time 12:24		Additional Info	

[illegible]