



## Defect Listing

Pipe Segment Refere... <b>D11-7_D11-8</b>	City <b>Oliver Springs</b>	Street <b>Norwood Dr</b>	Material <b>Concrete Pipe (non-...</b>	Location C... <b>Light High...</b>	Sewer Use <b>Sanitary</b>
Upstream MH <b>D11-7</b>	Total Length <b>118.2</b>	Year Laid	Shape <b>Circular</b>	Location Details	
DS Manhole <b>D11-8</b>	Length surveyed <b>118.2</b>	Year Renewed	Height <b>8</b>	Width <b>8</b>	Pipe Joint... <b>4</b>

SPR <b>N/A</b>	MPR <b>N/A</b>	PO Number <b>4397-03</b>		Customer <b>GRW</b>	
SPRI <b>N/A</b>	MPRI <b>N/A</b>	Work Order <b>4397-02</b>		Purpose <b>Pre-Rehabilitation Survey</b>	
QSR <b>N/A</b>	QMR <b>N/A</b>				
OPR <b>N/A</b>	Surveyed By <b>Barry Rogers</b>	Direction <b>Upstream</b>	Date <b>20150623</b>	Media label	
OPRI <b>N/A</b>	Certificate Number <b>U-1012-16405</b>	Pre-Cleaning <b>No Pre-Cleaning</b>	Time <b>12:03</b>	Weather <b>Dry</b>	
Date Cleaned			End Time <b>12:09</b>	Additional Info	

Distance	Condition	Cont. Dfct.	Values			Joint	Clock Position		Grade
			1st	2nd	%		At/From	To	
0.0 ft.	Access Point Manhole				0	<input type="checkbox"/>			
Remarks: D11-8									
0.0 ft.	Water Level				0	<input type="checkbox"/>			
60.7 ft.	Tap Factory Made		6		0	<input type="checkbox"/>	3		
118.2 ft.	Water Level				5	<input type="checkbox"/>			
118.2 ft.	Access Point Manhole				0	<input type="checkbox"/>			
Remarks: D11-7									



## Image Report 4/Page

Pipe Segment Refere...	City	Street	Material	Location C...	Sewer Use
D11-7_D11-8	Oliver Springs	Norwood Dr	Concrete Pipe (non-...	Light High...	Sanitary
Upstream MH	Total Length	Year Laid	Shape	Location Details	
D11-7	118.2		Circular		
DS Manhole	Length surveyed	Year Renewed	Height	Width	Pipe Joint...
D11-8	118.2		8	8	4



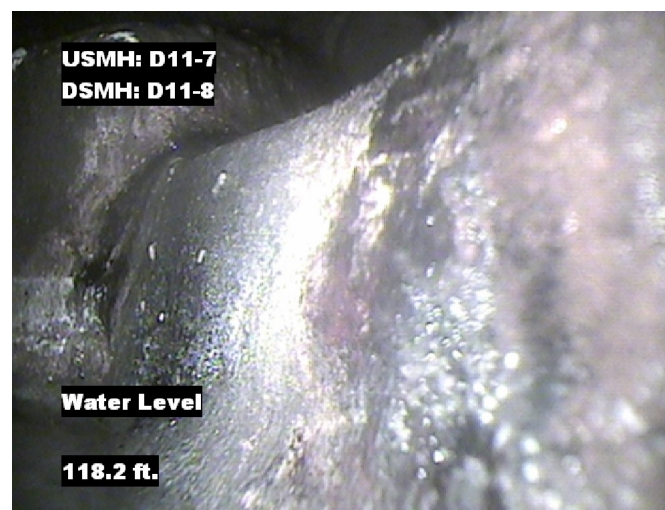
Distance: 0.0 ft. Grade: 0  
Condition: Access Point Manhole  
Remarks: D11-8



Distance: 0.0 ft. Grade: 0  
Condition: Water Level  
Remarks: N/A



Distance: 60.7 ft. Grade: 0  
Condition: Tap Factory Made  
Remarks: N/A



Distance: 118.2 ft. Grade: 0  
Condition: Water Level  
Remarks: N/A



## Image Report 4/Page

Pipe Segment Refere... <b>D11-7_D11-8</b>	<b>City</b> <b>Oliver Springs</b>	<b>Street</b> <b>Norwood Dr</b>	<b>Material</b> <b>Concrete Pipe (non-...</b>		<b>Location C...</b> <b>Light High...</b>	<b>Sewer Use</b> <b>Sanitary</b>
<b>Upstream MH</b> <b>D11-7</b>	Total Length <b>118.2</b>	Year Laid	<b>Shape</b> <b>Circular</b>		Location Details	
<b>DS Manhole</b> <b>D11-8</b>	<b>Length surveyed</b> <b>118.2</b>	Year Renewed	<b>Height</b> <b>8</b>	Width <b>8</b>	Pipe Joint...	<b>4</b>



Distance: 118.2 ft.      Grade: 0  
Condition: Access Point Manhole  
Remarks: D11-7



Pipe Segment Refere... D11-7_D11-8	City Oliver Springs	Street Norwood Dr	Material Concrete Pipe (non-...		Location C... Light High...	Sewer Use Sanitary
Upstream MH D11-7	Total Length 118.2	Year Laid	Shape Circular		Location Details	
DS Manhole D11-8	Length surveyed 118.2	Year Renewed	Height 8	Width 8	Pipe Joint...	
SPR	N/A	MPR	N/A	PO Number		
SPRI	N/A	MPRI	N/A	Customer		
QSR	N/A	QMR	N/A	GRW		
Work Order				Purpose		
4397-02				Pre-Rehabilitation Survey		
OPR	Surveyed By Barry_Rogers	Direction Upstream	Date 20150623		Media label	
OPRI	Certificate Number U-1012-16405	Pre-Cleaning No Pre-Cleaning	Time 12:03		Weather Dry	
Date Cleaned			End Time 12:09		Additional Info	

[illegible]