



## Defect Listing

Pipe Segment Refere... <b>D11-10_D11-9</b>	City <b>Oliver Springs</b>	Street <b>Norwood Dr</b>	Material <b>Concrete Pipe (non-...</b>	Location C... <b>Light High...</b>	Sewer Use <b>Sanitary</b>
Upstream MH <b>D11-10</b>	Total Length <b>330.3</b>	Year Laid	Shape <b>Circular</b>	Location Details	
DS Manhole <b>D11-9</b>	Length surveyed <b>330.3</b>	Year Renewed	Height <b>8</b>	Width <b>8</b>	Pipe Joint... <b>4</b>

SPR <b>2</b>	MPR <b>N/A</b>	PO Number <b>4397-03</b>	Customer <b>GRW</b>
SPRI <b>1</b>	MPRI <b>N/A</b>	Work Order <b>4397-02</b>	Purpose <b>Pre-Rehabilitation Survey</b>
QSR <b>1200</b>	QMR <b>N/A</b>		
OPR <b>2</b>	Surveyed By <b>Barry Rogers</b>	Direction <b>Downstream</b>	Date <b>20150622</b>
OPRI <b>1</b>	Certificate Number <b>U-1012-16405</b>	Pre-Cleaning <b>Jetting</b>	Time <b>15:14</b>
	Date Cleaned <b>20150622</b>	End Time <b>15:25</b>	Weather <b>Very Dry</b>
			Media label
			Additional Info

Distance	Condition	Cont. Dfct.	Values			Joint	Clock Position		Grade
			1st	2nd	%		At/From	To	
0.0 ft.	Access Point Manhole				0	<input type="checkbox"/>			
Remarks: D11-10									
0.0 ft.	Water Level				10	<input type="checkbox"/>			
43.8 ft.	Tap Factory Made		6		0	<input type="checkbox"/>	9		
70.3 ft.	Joint Offset Medium				0	<input type="checkbox"/>			1
72.8 ft.	Joint Offset Medium					<input type="checkbox"/>			1
102.5 ft.	Tap Factory Made		6		0	<input type="checkbox"/>	3		
195.1 ft.	Tap Factory Made		6		0	<input type="checkbox"/>	9		
214.8 ft.	Tap Factory Made		6		0	<input type="checkbox"/>	3		
261.3 ft.	Tap Factory Made		6		0	<input type="checkbox"/>	9		
328.2 ft.	Water Level				5	<input type="checkbox"/>			
330.3 ft.	Access Point Manhole				0	<input type="checkbox"/>			
Remarks: D11-09									



## Image Report 4/Page

Pipe Segment Refere...	City	Street	Material	Location C...	Sewer Use
D11-10_D11-9	Oliver Springs	Norwood Dr	Concrete Pipe (non-...	Light High...	Sanitary
Upstream MH D11-10	Total Length 330.3	Year Laid	Shape Circular	Location Details	
DS Manhole D11-9	Length surveyed 330.3	Year Renewed	Height 8	Width 8	Pipe Joint... 4



Distance: 0.0 ft. Grade: 0  
Condition: Access Point Manhole  
Remarks: D11-10



Distance: 0.0 ft. Grade: 0  
Condition: Water Level  
Remarks: N/A



Distance: 43.8 ft. Grade: 0  
Condition: Tap Factory Made  
Remarks: N/A



Distance: 70.3 ft. Grade: 1  
Condition: Joint Offset Medium  
Remarks: N/A

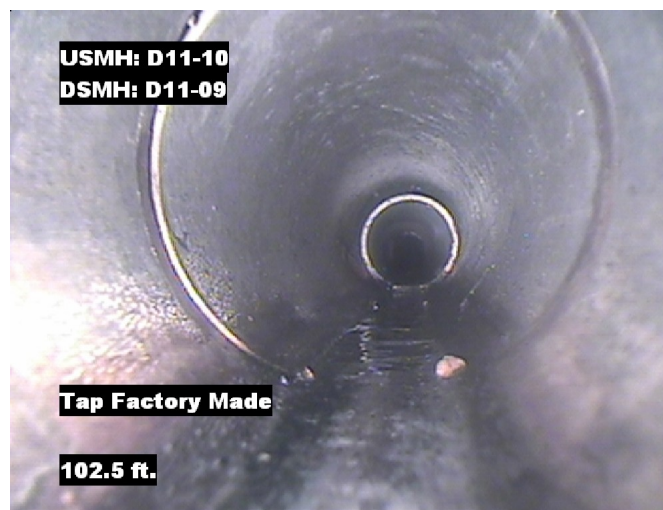


## Image Report 4/Page

Pipe Segment Refere...	City	Street	Material	Location C...	Sewer Use
D11-10_D11-9	Oliver Springs	Norwood Dr	Concrete Pipe (non-...	Light High...	Sanitary
Upstream MH D11-10	Total Length 330.3	Year Laid	Shape Circular	Location Details	
DS Manhole D11-9	Length surveyed 330.3	Year Renewed	Height 8	Width 8	Pipe Joint... 4



Distance: 72.8 ft. Grade: 1  
Condition: Joint Offset Medium  
Remarks: N/A



Distance: 102.5 ft. Grade: 0  
Condition: Tap Factory Made  
Remarks: N/A



Distance: 195.1 ft. Grade: 0  
Condition: Tap Factory Made  
Remarks: N/A



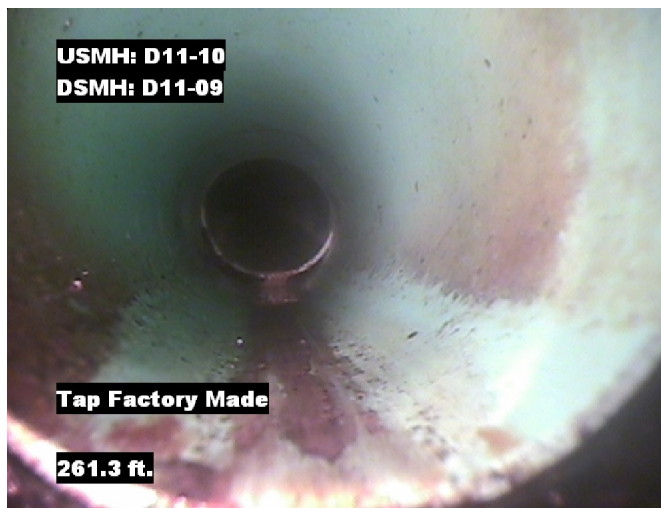
Distance: 214.8 ft. Grade: 0  
Condition: Tap Factory Made  
Remarks: N/A



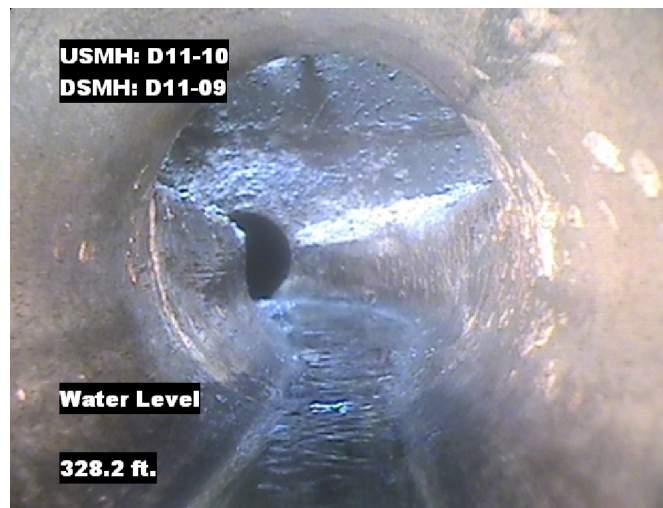


## Image Report 4/Page

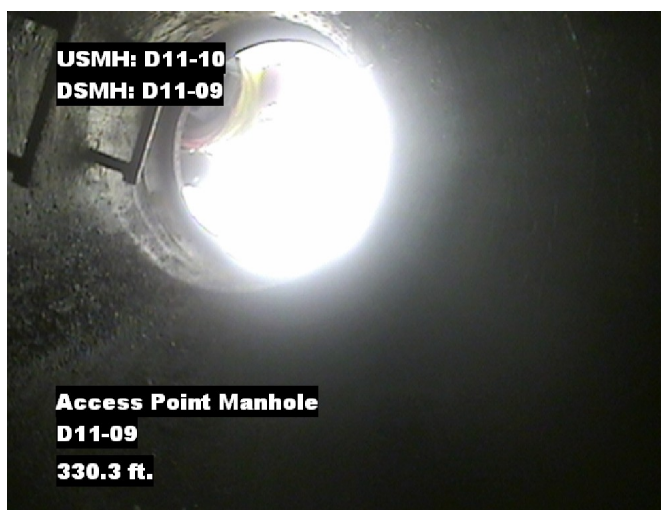
Pipe Segment Refere...	City	Street	Material	Location C...	Sewer Use
D11-10_D11-9	Oliver Springs	Norwood Dr	Concrete Pipe (non-...	Light High...	Sanitary
Upstream MH D11-10	Total Length 330.3	Year Laid	Shape Circular	Location Details	
DS Manhole D11-9	Length surveyed 330.3	Year Renewed	Height 8	Width 8	Pipe Joint... 4



Distance: 261.3 ft. Grade: 0  
Condition: Tap Factory Made  
Remarks: N/A



Distance: 328.2 ft. Grade: 0  
Condition: Water Level  
Remarks: N/A



Distance: 330.3 ft. Grade: 0  
Condition: Access Point Manhole  
Remarks: D11-09



## PACP Conditions

Pipe Segment Refere... <b>D11-10_D11-9</b>	City <b>Oliver Springs</b>	Street <b>Norwood Dr</b>	Material <b>Concrete Pipe (non-...</b>	Location C... <b>Light High...</b>	Sewer Use <b>Sanitary</b>
Upstream MH <b>D11-10</b>	Total Length <b>330.3</b>	Year Laid	Shape <b>Circular</b>	Location Details	
DS Manhole <b>D11-9</b>	Length surveyed <b>330.3</b>	Year Renewed	Height <b>8</b>	Width <b>8</b>	Pipe Joint... <b>4</b>
SPR <b>2</b>	MPR <b>N/A</b>	PO Number <b>4397-03</b>		Customer <b>GRW</b>	
SPRI <b>1</b>	MPRI <b>N/A</b>	Work Order <b>4397-02</b>		Purpose <b>Pre-Rehabilitation Survey</b>	
QSR <b>1200</b>	QMR <b>N/A</b>	Direction <b>Downstream</b>		Date <b>20150622</b>	
OPR <b>2</b>	Surveyed By <b>Barry Rogers</b>	Pre-Cleaning <b>Jetting</b>		Media label	
OPRI <b>1</b>	Certificate Number <b>U-1012-16405</b>	Time <b>15:14</b>		Weather <b>Very Dry</b>	
Date Cleaned <b>20150622</b>			End Time <b>15:25</b>		Additional Info

			Structural Ratings			O & M Ratings			Combined Ratings		
			Grade Rating	No. Occur.	Rating	Grade Rating	No. Occur.	Rating	Grade Rating	No. Occur.	Rating
Normal Defects											
			1	2	2	1	0	0	1	2	2
			2	0	0	2	0	0	2	0	0
			3	0	0	3	0	0	3	0	0
			4	0	0	4	0	0	4	0	0
			5	0	0	5	0	0	5	0	0
Continuous Defects											
Code	ID	Length									
			Subtotals	2		Subtotals	0		Subtotals	2	
SUMMARY			Pipe Rating	2		Pipe Rating	0		Overall Pipe Rating	2	
			Structural Index	1.0		O&M Index	0		Overall Index	1.0	
			Str. Quick Rating	1200		O&M Quick Rating	0000		Ovrl. Quick Rating	1200	