



## Defect Listing

Pipe Segment Refere... <b>D11-1_D-17-1</b>	City <b>Oliver Springs</b>	Street <b>Airport Rd</b>	Material <b>Concrete Pipe (non-...</b>	Location C... <b>Light High...</b>	Sewer Use <b>Sanitary</b>
Upstream MH <b>D11-1</b>	Total Length <b>160.8</b>	Year Laid	Shape <b>Circular</b>	Location Details	
DS Manhole <b>D-17-1</b>	Length surveyed <b>160.8</b>	Year Renewed	Height <b>8</b>	Width <b>8</b>	Pipe Joint... <b>4</b>

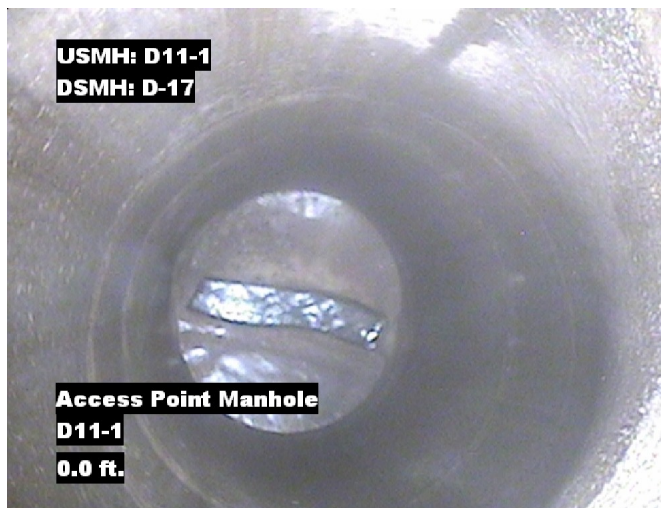
SPR <b>N/A</b>	MPR <b>N/A</b>	PO Number <b>4397-03</b>		Customer <b>GRW</b>	
SPRI <b>N/A</b>	MPRI <b>N/A</b>	Work Order <b>4397-02</b>		Purpose <b>Pre-Rehabilitation Survey</b>	
QSR <b>N/A</b>	QMR <b>N/A</b>				
OPR <b>N/A</b>	Surveyed By <b>Barry Rogers</b>	Direction <b>Downstream</b>	Date <b>20150701</b>	Media label	
OPRI <b>N/A</b>	Certificate Number <b>U-1012-16405</b>	Pre-Cleaning <b>Jetting</b>	Time <b>10:44</b>	Weather <b>Saturated</b>	
Date Cleaned <b>20150701</b>			End Time <b>10:50</b>	Additional Info	

Distance	Condition	Cont. Dfct.	Values			Joint	Clock Position		Grade
			1st	2nd	%		At/From	To	
0.0 ft.	Access Point Manhole				0	<input type="checkbox"/>			
Remarks: D11-1									
0.0 ft.	Water Level				5	<input type="checkbox"/>			
160.5 ft.	Water Level				5	<input type="checkbox"/>			
160.8 ft.	Access Point Manhole				0	<input type="checkbox"/>			
Remarks: D17-1									

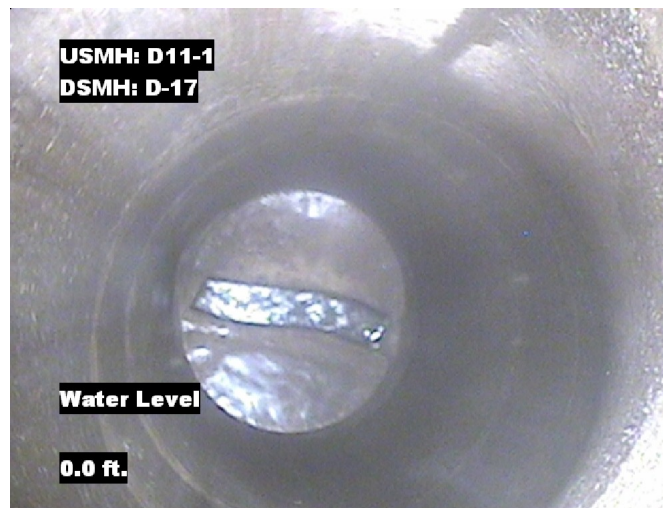


## Image Report 4/Page

Pipe Segment Refere... <b>D11-1_D-17-1</b>	City <b>Oliver Springs</b>	Street <b>Airport Rd</b>	Material <b>Concrete Pipe (non-...</b>		Location C... <b>Light High...</b>	Sewer Use <b>Sanitary</b>
Upstream MH <b>D11-1</b>	Total Length <b>160.8</b>	Year Laid	Shape <b>Circular</b>		Location Details	
DS Manhole <b>D-17-1</b>	Length surveyed <b>160.8</b>	Year Renewed	Height <b>8</b>	Width <b>8</b>	Pipe Joint... <b>4</b>	



Distance: 0.0 ft. Grade: 0  
Condition: Access Point Manhole  
Remarks: D11-1



Distance: 0.0 ft. Grade: 0  
Condition: Water Level  
Remarks: N/A



Distance: 160.5 ft. Grade: 0  
Condition: Water Level  
Remarks: N/A



Distance: 160.8 ft. Grade: 0  
Condition: Access Point Manhole  
Remarks: D17-1



## PACP Conditions

Pipe Segment Refere... <b>D11-1_D-17-1</b>	City <b>Oliver Springs</b>	Street <b>Airport Rd</b>	Material <b>Concrete Pipe (non-...</b>	Location C... <b>Light High...</b>	Sewer Use <b>Sanitary</b>
Upstream MH <b>D11-1</b>	Total Length <b>160.8</b>	Year Laid	Shape <b>Circular</b>	Location Details	
DS Manhole <b>D-17-1</b>	Length surveyed <b>160.8</b>	Year Renewed	Height <b>8</b>	Width <b>8</b>	Pipe Joint... <b>4</b>
SPR <b>N/A</b>	MPR <b>N/A</b>	PO Number <b>4397-03</b>		Customer <b>GRW</b>	
SPRI <b>N/A</b>	MPRI <b>N/A</b>	Work Order <b>4397-02</b>		Purpose <b>Pre-Rehabilitation Survey</b>	
QSR <b>N/A</b>	QMR <b>N/A</b>	Direction <b>Downstream</b>		Date <b>20150701</b>	
OPR <b>N/A</b>	Surveyed By <b>Barry Rogers</b>	Pre-Cleaning <b>Jetting</b>		Media label	
OPRI <b>N/A</b>	Certificate Number <b>U-1012-16405</b>	Time <b>10:44</b>		Weather <b>Saturated</b>	
Date Cleaned <b>20150701</b>			End Time <b>10:50</b>		Additional Info

			Structural Ratings			O & M Ratings			Combined Ratings		
			Grade Rating	No. Occur.	Rating	Grade Rating	No. Occur.	Rating	Grade Rating	No. Occur.	Rating
Normal Defects											
Continuous Defects			1	0	0	1	0	0	1	0	0
			2	0	0	2	0	0	2	0	0
			3	0	0	3	0	0	3	0	0
			4	0	0	4	0	0	4	0	0
			5	0	0	5	0	0	5	0	0
Code	ID	Length									