



Defect Listing

Pipe Segment Refere... D10-3_D10-2	City Oliver Springs	Street White Oak Ave	Material Concrete Pipe (non-...	Location C... Light High...	Sewer Use Sanitary
Upstream MH D10-3	Total Length 189.2	Year Laid	Shape Circular	Location Details	
DS Manhole D10-2	Length surveyed 189.2	Year Renewed	Height 8	Width 8	Pipe Joint... 4

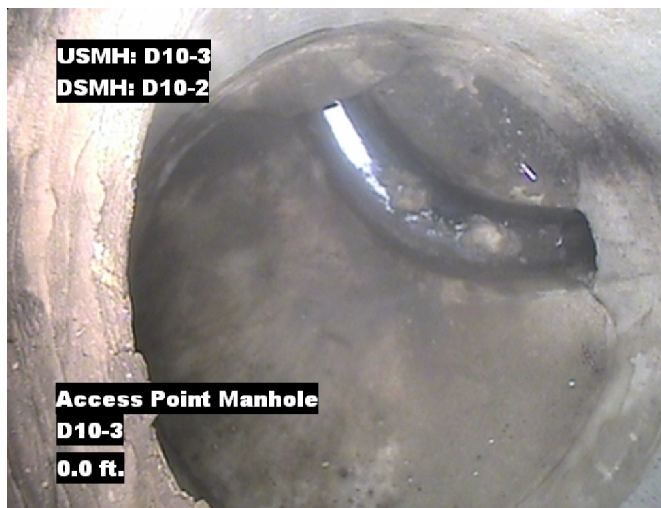
SPR N/A	MPR 6	PO Number 4397-03	Customer GRW
SPRI N/A	MPRI 2	Work Order 4397-02	Purpose Pre-Rehabilitation Survey
QSR N/A	QMR 3121		
OPR 6	Surveyed By Barry Rogers	Direction Downstream	Date 20150629
OPRI 2	Certificate Number U-1012-16405	Pre-Cleaning Jetting	Time 08:40
	Date Cleaned 20150629	End Time 08:54	Weather Dry
			Additional Info

Distance	Condition	Cont. Dfct.	Values			Joint	Clock Position		Grade
			1st	2nd	%		At/From	To	
0.0 ft.	Access Point Manhole				0	<input type="checkbox"/>			
Remarks: D10-3									
0.0 ft.	Water Level				5	<input type="checkbox"/>			
66.8 ft.	Tap Factory Made		6		0	<input type="checkbox"/>	9		
78.7 ft.	Tap Factory Made		6		0	<input type="checkbox"/>	9		
129.7 ft.	Roots Tap Joint				5	<input checked="" type="checkbox"/>	2		2
185.1 ft.	Roots Fine Joint				0	<input checked="" type="checkbox"/>	9		1
185.1 ft.	Tap Break-In Defective		6			<input type="checkbox"/>	9		3
Remarks: tap has fallen and is defective									
187.2 ft.	Water Level				5	<input type="checkbox"/>			
188.5 ft.	Tap Factory Made		8			<input type="checkbox"/>	6		
Remarks: Drop Line									
189.2 ft.	Access Point Manhole					<input type="checkbox"/>			
Remarks: D10-2									



Image Report 4/Page

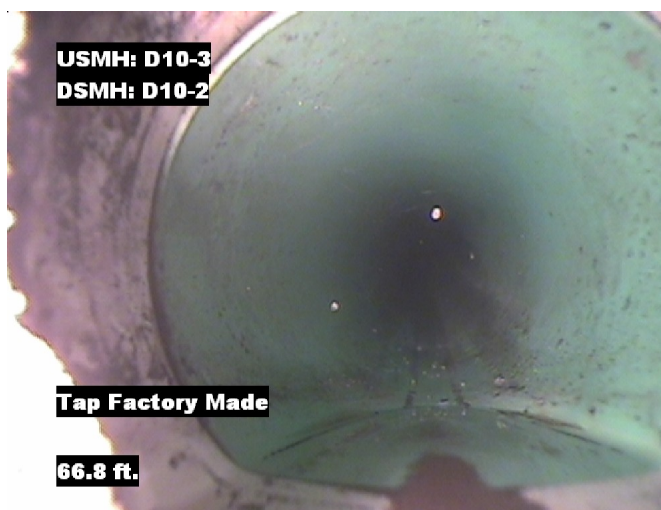
Pipe Segment Refere... D10-3_D10-2	City Oliver Springs	Street White Oak Ave	Material Concrete Pipe (non-...		Location C... Light High...	Sewer Use Sanitary
Upstream MH D10-3	Total Length 189.2	Year Laid	Shape Circular		Location Details	
DS Manhole D10-2	Length surveyed 189.2	Year Renewed	Height 8	Width 8	Pipe Joint...	4



Distance: 0.0 ft. Grade: 0
Condition: Access Point Manhole
Remarks: D10-3



Distance: 0.0 ft. Grade: 0
Condition: Water Level
Remarks: N/A



Distance: 66.8 ft. Grade: 0
Condition: Tap Factory Made
Remarks: N/A



Distance: 78.7 ft. Grade: 0
Condition: Tap Factory Made
Remarks: N/A

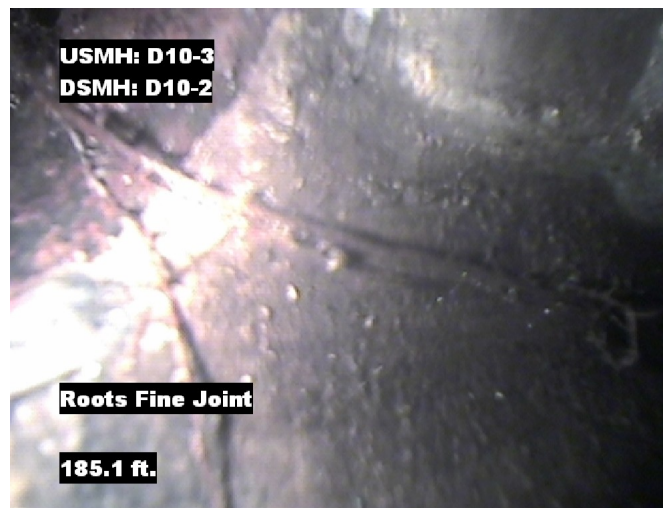


Image Report 4/Page

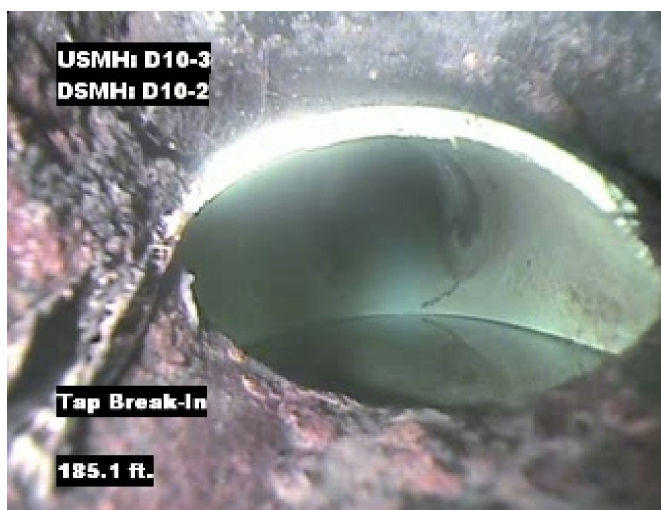
Pipe Segment Refere... D10-3_D10-2	City Oliver Springs	Street White Oak Ave	Material Concrete Pipe (non-...		Location C... Light High...	Sewer Use Sanitary
Upstream MH D10-3	Total Length 189.2	Year Laid	Shape Circular		Location Details	
DS Manhole D10-2	Length surveyed 189.2	Year Renewed	Height 8	Width 8	Pipe Joint... 4	



Distance: 129.7 ft. Grade: 2
Condition: Roots Tap Joint
Remarks: N/A



Distance: 185.1 ft. Grade: 1
Condition: Roots Fine Joint
Remarks: N/A



Distance: 185.1 ft. Grade: 3
Condition: Tap Break-In Defective
Remarks: tap has fallen and is defective

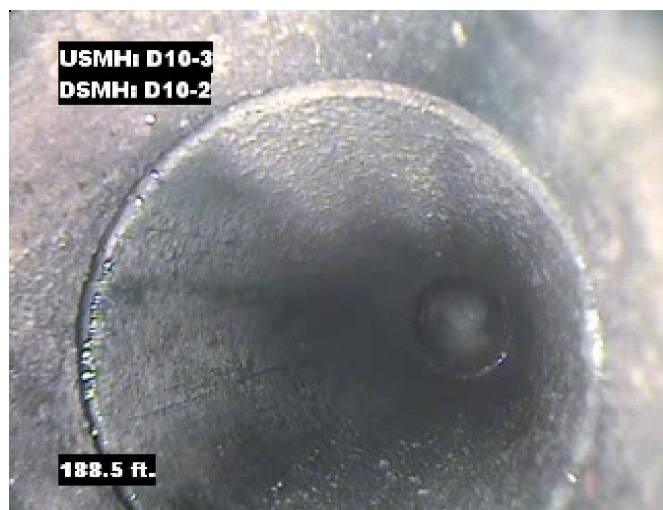


Distance: 187.2 ft. Grade: 0
Condition: Water Level
Remarks: N/A



Image Report 4/Page

Pipe Segment Refere...	City	Street	Material	Location C...	Sewer Use
D10-3_D10-2	Oliver Springs	White Oak Ave	Concrete Pipe (non-...	Light High...	Sanitary
Upstream MH	Total Length	Year Laid	Shape	Location Details	
D10-3	189.2		Circular		
DS Manhole	Length surveyed	Year Renewed	Height	Width	Pipe Joint...
D10-2	189.2		8	8	4



Distance: 188.5 ft. Grade: 0
Condition: Tap Factory Made
Remarks: Drop Line



Distance: 189.2 ft. Grade: 0
Condition: Access Point Manhole
Remarks: D10-2



Pipe Segment Refere...	City	Street	Material	Location C...	Sewer Use
D10-3_D10-2	Oliver Springs	White Oak Ave	Concrete Pipe (non-...	Light High...	Sanitary
Upstream MH	Total Length	Year Laid	Shape	Location Details	
D10-3	189.2		Circular		
DS Manhole	Length surveyed	Year Renewed	Height	Width	Pipe Joint...
D10-2	189.2		8	8	4
SPR	N/A	MPR	6	Customer	
SPRI	N/A	MPRI	2	GRW	
QSR	N/A	QMR	3121	Purpose	
			4397-02	Pre-Rehabilitation Survey	
OPR	Surveyed By	Direction	Date	Media label	
6	Barry_Rogers	Downstream	20150629		
OPRI	Certificate Number	Pre-Cleaning	Time	Weather	
2	U-1012-16405	Jetting	08:40	Dry	
Date Cleaned			End Time	Additional Info	
20150629			08:54		

Page #: 5