



## Defect Listing

Pipe Segment Refere... <b>D10-2_D10-1</b>	City <b>Oliver Springs</b>	Street <b>White Oak ave</b>	Material <b>Concrete Pipe (non-...</b>	Location C... <b>Light High...</b>	Sewer Use <b>Sanitary</b>
Upstream MH <b>D10-2</b>	Total Length <b>267.3</b>	Year Laid	Shape <b>Circular</b>	Location Details	
DS Manhole <b>D10-1</b>	Length surveyed <b>267.3</b>	Year Renewed	Height <b>8</b>	Width <b>8</b>	Pipe Joint... <b>4</b>

SPR <b>N/A</b>	MPR <b>2</b>	PO Number <b>4397-03</b>	Customer <b>GRW</b>
SPRI <b>N/A</b>	MPRI <b>2</b>	Work Order <b>4397-02</b>	Purpose <b>Pre-Rehabilitation Survey</b>
QSR <b>N/A</b>	QMR <b>2100</b>		
OPR <b>2</b>	Surveyed By <b>Barry Rogers</b>	Direction <b>Downstream</b>	Date <b>20150629</b>
OPRI <b>2</b>	Certificate Number <b>U-1012-16405</b>	Pre-Cleaning <b>Jetting</b>	Time <b>09:05</b>
	Date Cleaned <b>20150629</b>	End Time <b>09:22</b>	Weather <b>Dry</b>
			Additional Info

Distance	Condition	Cont. Dfct.	Values			Joint	Clock Position		Grade
			1st	2nd	%		At/From	To	
0.0 ft.	Access Point Manhole				0	<input type="checkbox"/>			
Remarks: D10-2									
0.0 ft.	Water Level				5	<input type="checkbox"/>			
75.9 ft.	Tap Factory Made		6		0	<input type="checkbox"/>	3		
258.5 ft.	Deposits Attached Grease				10	<input type="checkbox"/>	3	9	2
264.4 ft.	Water Level				5	<input type="checkbox"/>			
267.3 ft.	Access Point Manhole				0	<input type="checkbox"/>			
Remarks: D10-1									



## Image Report 4/Page

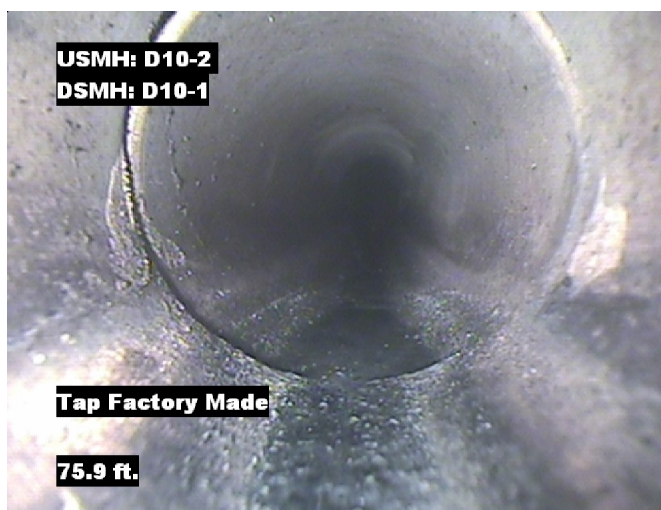
Pipe Segment Refere...	City	Street	Material	Location C...	Sewer Use
D10-2 D10-1	Oliver Springs	White Oak ave	Concrete Pipe (non-...	Light High...	Sanitary
Upstream MH	Total Length	Year Laid	Shape	Location Details	
D10-2	267.3		Circular		
DS Manhole	Length surveyed	Year Renewed	Height	Width	Pipe Joint...
D10-1	267.3		8	8	4



Distance: 0.0 ft. Grade: 0  
Condition: Access Point Manhole  
Remarks: D10-2



Distance: 0.0 ft. Grade: 0  
Condition: Water Level  
Remarks: N/A



Distance: 75.9 ft. Grade: 0  
Condition: Tap Factory Made  
Remarks: N/A



Distance: 258.5 ft. Grade: 2  
Condition: Deposits Attached Grease  
Remarks: N/A



## Image Report 4/Page

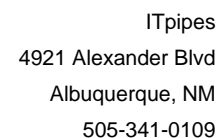
Pipe Segment Refere...	City	Street	Material	Location C...	Sewer Use
D10-2_D10-1	Oliver Springs	White Oak ave	Concrete Pipe (non-...	Light High...	Sanitary
Upstream MH D10-2	Total Length 267.3	Year Laid	Shape Circular	Location Details	
DS Manhole D10-1	Length surveyed 267.3	Year Renewed	Height 8	Width 8	Pipe Joint... 4



Distance: 264.4 ft. Grade: 0  
Condition: Water Level  
Remarks: N/A



Distance: 267.3 ft. Grade: 0  
Condition: Access Point Manhole  
Remarks: D10-1



## PACP Conditions

Pipe Segment Refere...	City	Street	Material	Location C...	Sewer Use
D10-2_D10-1	Oliver Springs	White Oak ave	Concrete Pipe (non-...	Light High...	Sanitary
Upstream MH	Total Length	Year Laid	Shape	Location Details	
D10-2	267.3		Circular		
DS Manhole	Length surveyed	Year Renewed	Height	Width	Pipe Joint...
D10-1	267.3		8	8	4
SPR	N/A	MPR	2	Customer	
SPRI	N/A	MPRI	2	GRW	
QSR	N/A	QMR	2100	Purpose	
				Pre-Rehabilitation Survey	
OPR	Surveyed By	Direction	Date	Media label	
2	Barry_Rogers	Downstream	20150629		
OPRI	Certificate Number	Pre-Cleaning	Time	Weather	
2	U-1012-16405	Jetting	09:05	Dry	
Date Cleaned			End Time	Additional Info	
20150629			09:22		

[illegible]