



## Defect Listing

Pipe Segment Refere...	City	Street	Material	Location C...	Sewer Use
D-18_D-17	Oliver Springs	ClowersLN	Concrete Pipe (non-...	Yard	Sanitary
Upstream MH	Total Length	Year Laid	Shape	Location Details	
D-18	230.4		Circular		
DS Manhole	Length surveyed	Year Renewed	Height	Width	Pipe Joint...
D-17	230.4		8	8	4

SPR	N/A	MPR	8	PO Number	Customer
SPRI	N/A	MPRI	2	4397-03	GRW
QSR	N/A	QMR	2400	Work Order	Purpose
				4397-02	Pre-Rehabilitation Survey
OPR	Surveyed By	Direction	Date	Media label	
8	Barry_Rogers	Downstream	20150625		
OPRI	Certificate Number	Pre-Cleaning	Time	Weather	
2	U-1012-16405	Jetting	14:03	Dry	
Date Cleaned			End Time	Additional Info	
20150625			14:13		

Distance	Condition	Cont. Dfct.	Values			Joint	Clock Position		Grade
			1st	2nd	%		At/From	To	
0.0 ft.	Access Point Manhole				0	<input type="checkbox"/>			
Remarks: D-18									
0.0 ft.	Water Level				10	<input type="checkbox"/>			
19.9 ft.	Tap Factory Made		6		0	<input type="checkbox"/>	3		
52.4 ft.	Water Level Sag				20	<input type="checkbox"/>			2
115.4 ft.	Water Level Sag				20	<input type="checkbox"/>			2
130.8 ft.	Tap Factory Made Defective		6			<input type="checkbox"/>	3		2
Remarks: offset connection									
141.4 ft.	Tap Saddle		6		0	<input type="checkbox"/>	10		
223.5 ft.	Water Level Sag				20	<input type="checkbox"/>			2
230.4 ft.	Access Point Manhole				0	<input type="checkbox"/>			
Remarks: D-17									

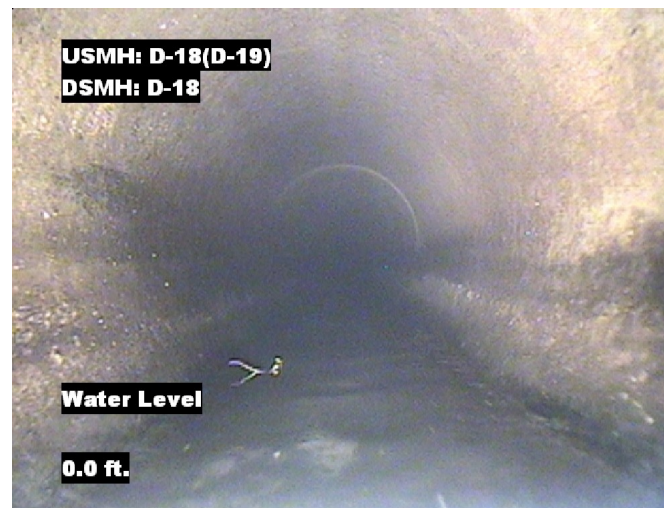


## Image Report 4/Page

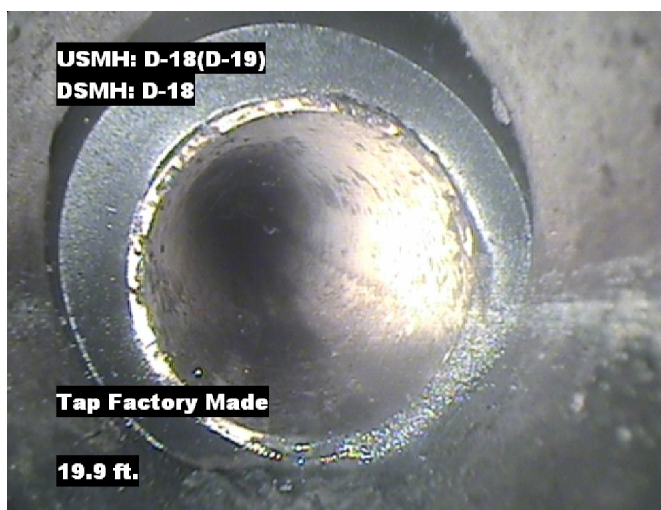
Pipe Segment Refere...	City	Street	Material	Location C...	Sewer Use
D-18_D-17	Oliver Springs	ClowersLN	Concrete Pipe (non-...	Yard	Sanitary
Upstream MH	Total Length	Year Laid	Shape	Location Details	
D-18	230.4		Circular		
DS Manhole	Length surveyed	Year Renewed	Height	Width	Pipe Joint...
D-17	230.4		8	8	4



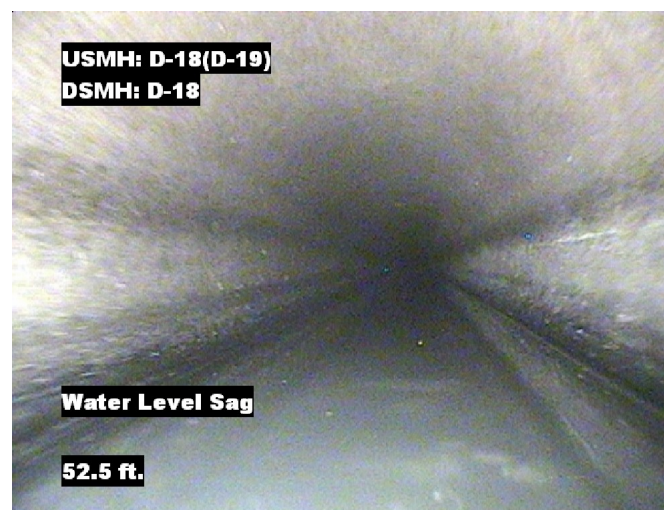
Distance: 0.0 ft. Grade: 0  
Condition: Access Point Manhole  
Remarks: D-18



Distance: 0.0 ft. Grade: 0  
Condition: Water Level  
Remarks: N/A



Distance: 19.9 ft. Grade: 0  
Condition: Tap Factory Made  
Remarks: N/A



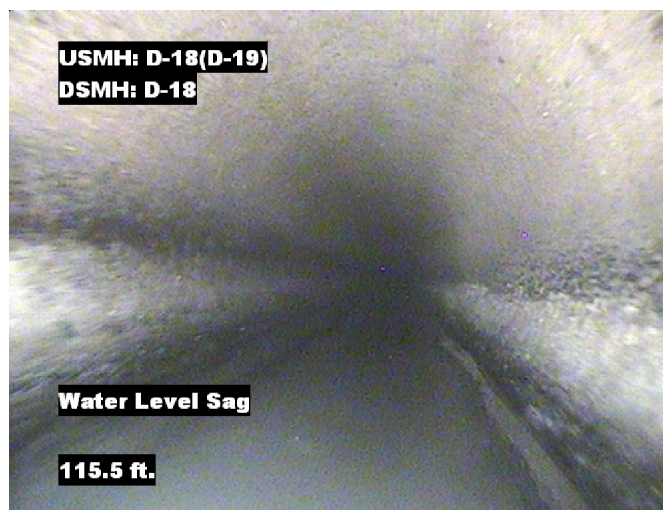
Distance: 52.4 ft. Grade: 2  
Condition: Water Level Sag  
Remarks: N/A





## Image Report 4/Page

Pipe Segment Refere...	City	Street	Material	Location C...	Sewer Use
D-18_D-17	Oliver Springs	ClowersLN	Concrete Pipe (non-...	Yard	Sanitary
Upstream MH	Total Length	Year Laid	Shape	Location Details	
D-18	230.4		Circular		
DS Manhole	Length surveyed	Year Renewed	Height	Width	Pipe Joint...
D-17	230.4		8	8	4



Distance: 115.4 ft. Grade: 2  
Condition: Water Level Sag  
Remarks: N/A



Distance: 130.8 ft. Grade: 2  
Condition: Tap Factory Made Defective  
Remarks: offset connection



Distance: 141.4 ft. Grade: 0  
Condition: Tap Saddle  
Remarks: N/A

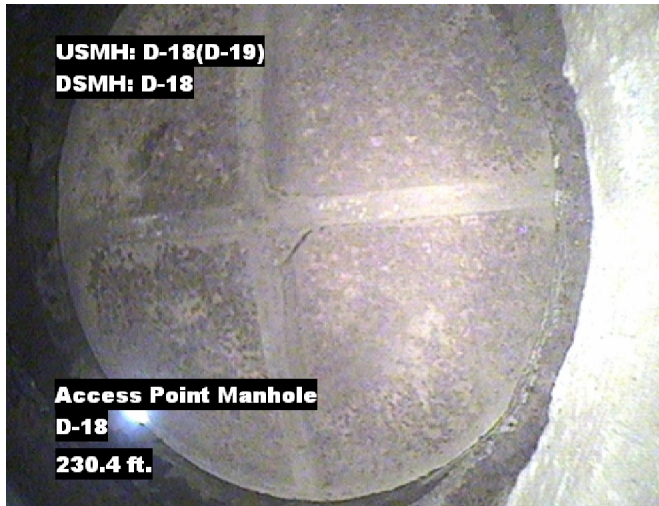


Distance: 223.5 ft. Grade: 2  
Condition: Water Level Sag  
Remarks: N/A



## Image Report 4/Page

Pipe Segment Refere...	City	Street	Material	Location C...	Sewer Use
D-18_D-17	Oliver Springs	ClowersLN	Concrete Pipe (non-...	Yard	Sanitary
Upstream MH	Total Length	Year Laid	Shape	Location Details	
D-18	230.4		Circular		
DS Manhole	Length surveyed	Year Renewed	Height	Width	Pipe Joint...
D-17	230.4		8	8	4



Distance: 230.4 ft. Grade: 0  
Condition: Access Point Manhole  
Remarks: D-17



## PACP Conditions

Pipe Segment Refere... <b>D-18_D-17</b>	City <b>Oliver Springs</b>	Street <b>ClowersLN</b>	Material <b>Concrete Pipe (non-...</b>	Location C... <b>Yard</b>	Sewer Use <b>Sanitary</b>
Upstream MH <b>D-18</b>	Total Length <b>230.4</b>	Year Laid	Shape <b>Circular</b>	Location Details	
DS Manhole <b>D-17</b>	Length surveyed <b>230.4</b>	Year Renewed	Height <b>8</b>	Width <b>8</b>	Pipe Joint... <b>4</b>
SPR <b>N/A</b>	MPR <b>8</b>	PO Number <b>4397-03</b>		Customer <b>GRW</b>	
SPRI <b>N/A</b>	MPRI <b>2</b>	Work Order <b>4397-02</b>		Purpose <b>Pre-Rehabilitation Survey</b>	
QSR <b>N/A</b>	QMR <b>2400</b>				
OPR <b>8</b>	Surveyed By <b>Barry Rogers</b>	Direction <b>Downstream</b>	Date <b>20150625</b>	Media label	
OPRI <b>2</b>	Certificate Number <b>U-1012-16405</b>	Pre-Cleaning <b>Jetting</b>	Time <b>14:03</b>	Weather <b>Dry</b>	
Date Cleaned <b>20150625</b>			End Time <b>14:13</b>	Additional Info	

			Structural Ratings			O & M Ratings			Combined Ratings		
			Grade Rating	No. Occur.	Rating	Grade Rating	No. Occur.	Rating	Grade Rating	No. Occur.	Rating
Normal Defects											
Continuous Defects			1	0	0	1	0	0	1	0	0
			2	0	0	2	4	8	2	4	8
			3	0	0	3	0	0	3	0	0
			4	0	0	4	0	0	4	0	0
			5	0	0	5	0	0	5	0	0
Code	ID	Length									