



## Defect Listing

Pipe Segment Refere... <b>D-17_D-17-1</b>	City <b>Oliver Springs</b>	Street <b>Airport Rd</b>	Material <b>Concrete Pipe (non-...</b>	Location C... <b>Light High...</b>	Sewer Use <b>Sanitary</b>
Upstream MH <b>D-17</b>	Total Length <b>237.9</b>	Year Laid	Shape <b>Circular</b>	Location Details	
DS Manhole <b>D-17-1</b>	Length surveyed <b>237.9</b>	Year Renewed	Height <b>8</b>	Width <b>8</b>	Pipe Joint... <b>4</b>

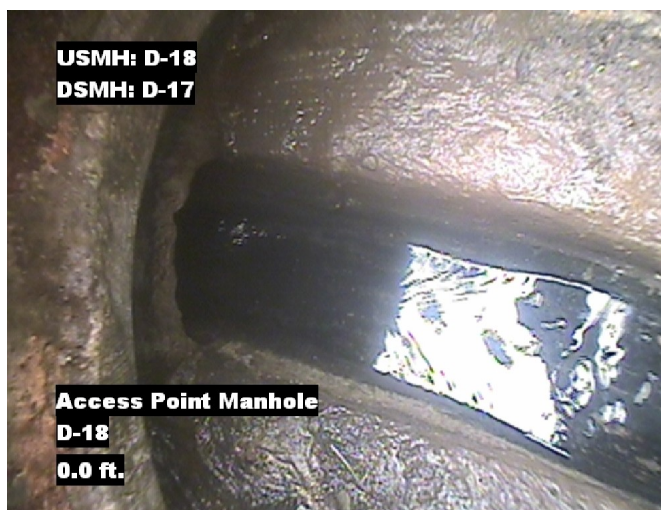
SPR <b>N/A</b>	MPR <b>10</b>	PO Number <b>4397-03</b>	Customer <b>GRW</b>
SPRI <b>N/A</b>	MPRI <b>2</b>	Work Order <b>4397-02</b>	Purpose <b>Pre-Rehabilitation Survey</b>
QSR <b>N/A</b>	QMR <b>2500</b>		
OPR <b>10</b>	Surveyed By <b>Barry Rogers</b>	Direction <b>Downstream</b>	Date <b>20150701</b>
OPRI <b>2</b>	Certificate Number <b>U-1012-16405</b>	Pre-Cleaning <b>Jetting</b>	Time <b>12:31</b>
	Date Cleaned <b>20150701</b>	End Time <b>12:40</b>	Weather <b>Saturated</b>
			Media label
			Additional Info

Distance	Condition	Cont. Dfct.	Values			Joint	Clock Position		Grade
			1st	2nd	%		At/From	To	
0.0 ft.	Access Point Manhole				0	<input type="checkbox"/>			
Remarks: D-17									
0.0 ft.	Water Level				5	<input type="checkbox"/>			
39.6 ft.	Tap Factory Made		6		0	<input type="checkbox"/>	9		
92.0 ft.	Water Level Sag				15	<input type="checkbox"/>			2
140.1 ft.	Water Level Sag				25	<input type="checkbox"/>			2
186.8 ft.	Water Level Sag				20	<input type="checkbox"/>			2
206.1 ft.	Water Level Sag				15	<input type="checkbox"/>			2
237.7 ft.	Water Level Sag				10	<input type="checkbox"/>			2
237.9 ft.	Access Point Manhole				0	<input type="checkbox"/>			
Remarks: D17-1									

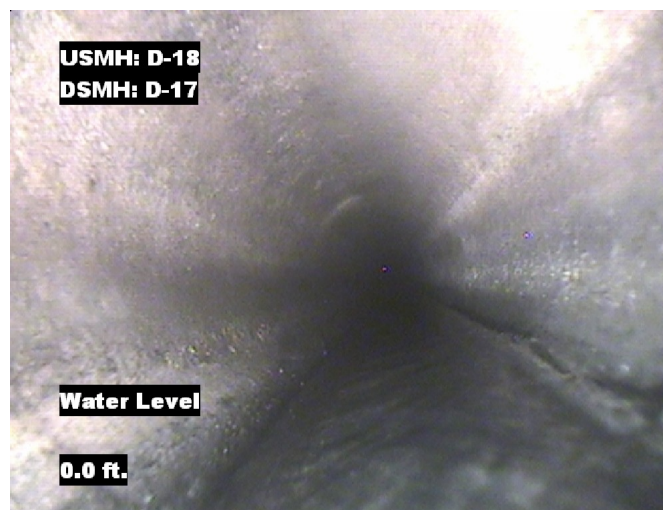


## Image Report 4/Page

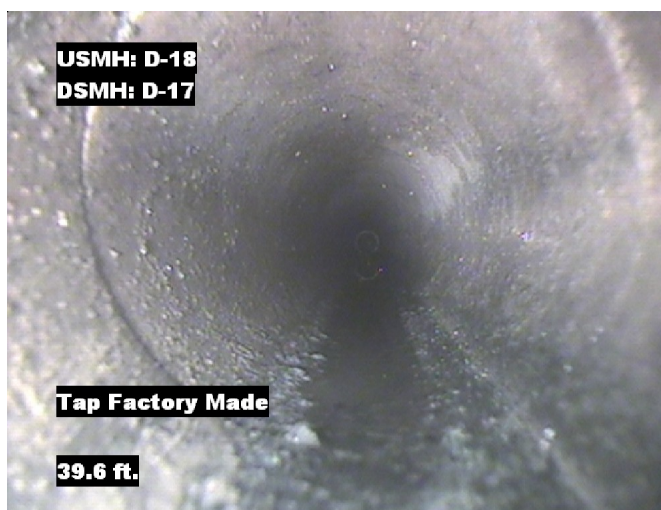
Pipe Segment Refere...	City	Street	Material	Location C...	Sewer Use
D-17_D-17-1	Oliver Springs	Airport Rd	Concrete Pipe (non-...	Light High...	Sanitary
Upstream MH D-17	Total Length 237.9	Year Laid	Shape Circular	Location Details	
DS Manhole D-17-1	Length surveyed 237.9	Year Renewed	Height 8	Width 8	Pipe Joint... 4



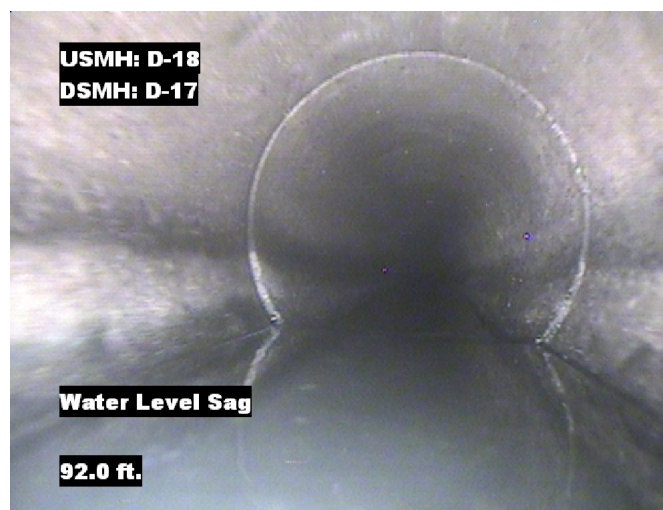
Distance: 0.0 ft. Grade: 0  
Condition: Access Point Manhole  
Remarks: D-17



Distance: 0.0 ft. Grade: 0  
Condition: Water Level  
Remarks: N/A



Distance: 39.6 ft. Grade: 0  
Condition: Tap Factory Made  
Remarks: N/A

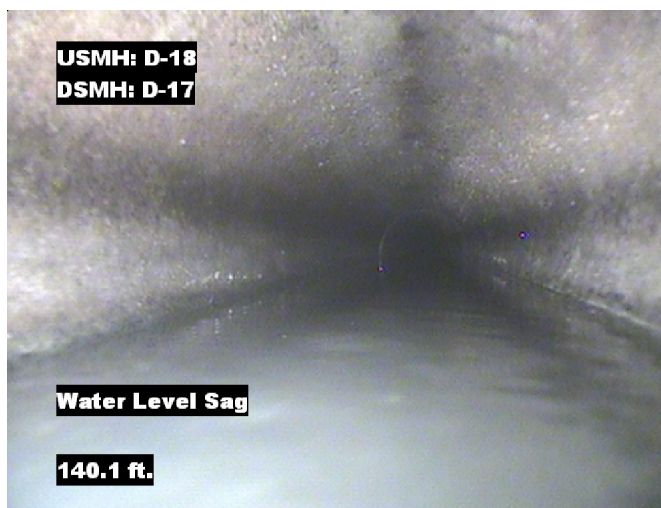


Distance: 92.0 ft. Grade: 2  
Condition: Water Level Sag  
Remarks: N/A

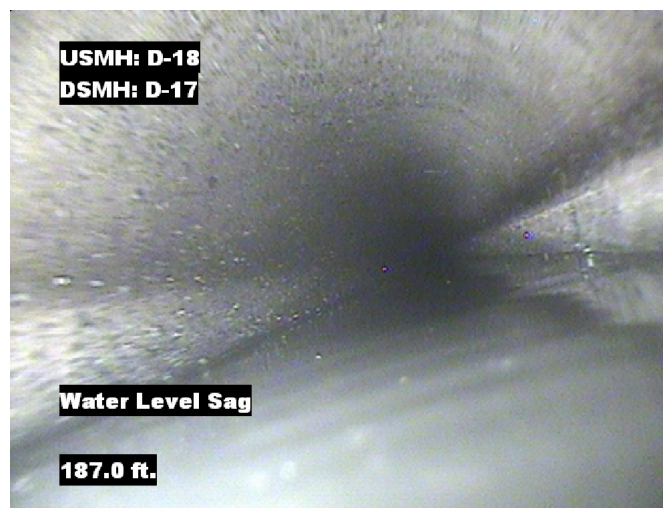


## Image Report 4/Page

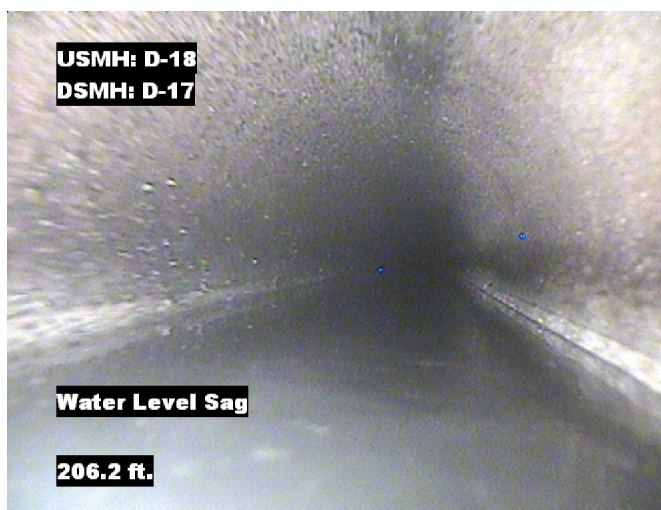
Pipe Segment Refere...	City	Street	Material	Location C...	Sewer Use
D-17_D-17-1	Oliver Springs	Airport Rd	Concrete Pipe (non-...	Light High...	Sanitary
Upstream MH	Total Length	Year Laid	Shape	Location Details	
D-17	237.9		Circular		
DS Manhole	Length surveyed	Year Renewed	Height	Width	Pipe Joint...
D-17-1	237.9		8	8	4



Distance: 140.1 ft. Grade: 2  
Condition: Water Level Sag  
Remarks: N/A



Distance: 186.8 ft. Grade: 2  
Condition: Water Level Sag  
Remarks: N/A



Distance: 206.1 ft. Grade: 2  
Condition: Water Level Sag  
Remarks: N/A



Distance: 237.7 ft. Grade: 2  
Condition: Water Level Sag  
Remarks: N/A





## Image Report 4/Page

Pipe Segment Refere... <b>D-17_D-17-1</b>	<b>City</b> <b>Oliver Springs</b>	<b>Street</b> <b>Airport Rd</b>	<b>Material</b> <b>Concrete Pipe (non-...</b>		<b>Location C...</b> <b>Light High...</b>	<b>Sewer Use</b> <b>Sanitary</b>
<b>Upstream MH</b> <b>D-17</b>	Total Length <b>237.9</b>	Year Laid	<b>Shape</b> <b>Circular</b>		Location Details	
<b>DS Manhole</b> <b>D-17-1</b>	<b>Length surveyed</b> <b>237.9</b>	Year Renewed	<b>Height</b> <b>8</b>	Width <b>8</b>	Pipe Joint...	<b>4</b>



Distance: 237.9 ft.      Grade: 0  
Condition: Access Point Manhole  
Remarks: D17-1



## PACP Conditions

Pipe Segment Refere... D-17_D-17-1	City Oliver Springs	Street Airport Rd	Material Concrete Pipe (non-...		Location C... Light High...	Sewer Use Sanitary
Upstream MH D-17	Total Length 237.9	Year Laid	Shape Circular		Location Details	
DS Manhole D-17-1	Length surveyed 237.9	Year Renewed	Height 8	Width 8	Pipe Joint... 4	
SPR N/A	MPR 10	PO Number 4397-03		Customer GRW		
SPRI N/A	MPRI 2	Work Order 4397-02		Purpose		
QSR N/A	QMR 2500			Pre-Rehabilitation Survey		
OPR 10	Surveyed By Barry_Rogers	Direction Downstream	Date 20150701		Media label	
OPRI 2	Certificate Number U-1012-16405	Pre-Cleaning Jetting	Time 12:31		Weather Saturated	
Date Cleaned 20150701			End Time 12:40		Additional Info	

			Structural Ratings			O & M Ratings			Combined Ratings		
			Grade Rating	No. Occur.	Rating	Grade Rating	No. Occur.	Rating	Grade Rating	No. Occur.	Rating
Normal Defects											
<div>Continuous Defects</div> <div>CodeIDLength</div> <div></div> <div></div>			1	0	0	1	0	0	1	0	0
			2	0	0	2	5	10	2	5	10
			3	0	0	3	0	0	3	0	0
			4	0	0	4	0	0	4	0	0
			5	0	0	5	0	0	5	0	0
			Subtotals	0		Subtotals	5		Subtotals	5	
SUMMARY			Pipe Rating Structural Index Str. Quick Rating	0 0 0000		Pipe Rating O&M Index O&M Quick Rating	10 2.0 2500		Overall Pipe Rating Overall Index Ovrl. Quick Rating	10 2.0 2500	