



## Defect Listing

Pipe Segment Refere... <b>D-17-1_D-16</b>	City <b>Oliver Springs</b>	Street <b>Airport Rd</b>	Material <b>Concrete Pipe (non-...</b>	Location C... <b>Light High...</b>	Sewer Use <b>Sanitary</b>
Upstream MH <b>D-17-1</b>	Total Length <b>185.4</b>	Year Laid	Shape <b>Circular</b>	Location Details	
DS Manhole <b>D-16</b>	Length surveyed <b>185.4</b>	Year Renewed	Height <b>8</b>	Width <b>8</b>	Pipe Joint... <b>4</b>

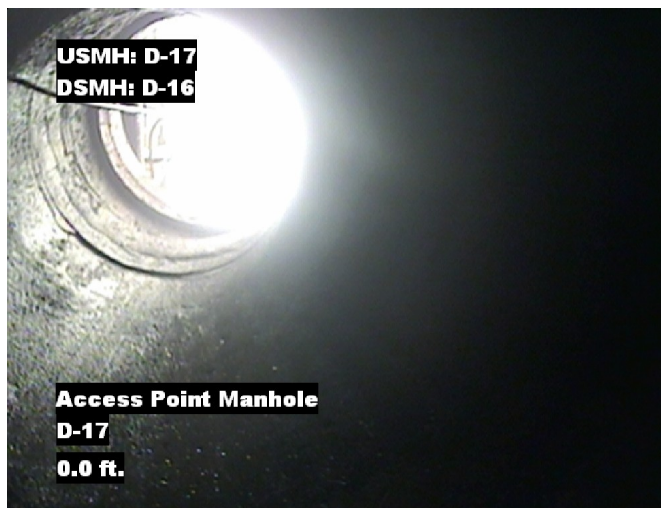
SPR <b>N/A</b>	MPR <b>N/A</b>	PO Number <b>4397-03</b>	Customer <b>GRW</b>
SPRI <b>N/A</b>	MPRI <b>N/A</b>	Work Order <b>4397-02</b>	Purpose <b>Pre-Rehabilitation Survey</b>
QSR <b>N/A</b>	QMR <b>N/A</b>		
OPR <b>N/A</b>	Surveyed By <b>Barry Rogers</b>	Direction <b>Downstream</b>	Date <b>20150701</b>
OPRI <b>N/A</b>	Certificate Number <b>U-1012-16405</b>	Pre-Cleaning <b>Jetting</b>	Time <b>13:00</b>
	Date Cleaned <b>20150601</b>	End Time <b>13:12</b>	Weather <b>Saturated</b>
			Media label
			Additional Info

Distance	Condition	Cont. Dfct.	Values			Joint	Clock Position		Grade
			1st	2nd	%		At/From	To	
0.0 ft.	Access Point Manhole				0	<input type="checkbox"/>			
Remarks: D17-1									
0.0 ft.	Water Level				10	<input type="checkbox"/>			
167.0 ft.	Tap Factory Made Capped		6		0	<input type="checkbox"/>	3		
183.0 ft.	Water Level				10	<input type="checkbox"/>			
183.0 ft.	Tap Factory Made		8			<input type="checkbox"/>	6		
Remarks: drop line									
185.4 ft.	Access Point Manhole				0	<input type="checkbox"/>			
Remarks: D-16									

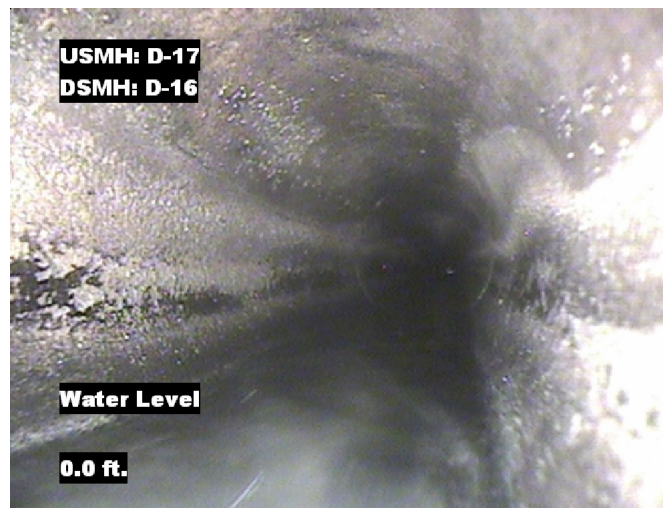


## Image Report 4/Page

Pipe Segment Refere...	City	Street	Material	Location C...	Sewer Use
D-17-1_D-16	Oliver Springs	Airport Rd	Concrete Pipe (non-...	Light High...	Sanitary
Upstream MH D-17-1	Total Length 185.4	Year Laid	Shape Circular	Location Details	
DS Manhole D-16	Length surveyed 185.4	Year Renewed	Height 8	Width 8	Pipe Joint... 4



Distance: 0.0 ft. Grade: 0  
Condition: Access Point Manhole  
Remarks: D17-1



Distance: 0.0 ft. Grade: 0  
Condition: Water Level  
Remarks: N/A



Distance: 167.0 ft. Grade: 0  
Condition: Tap Factory Made Capped  
Remarks: N/A



Distance: 183.0 ft. Grade: 0  
Condition: Water Level  
Remarks: N/A

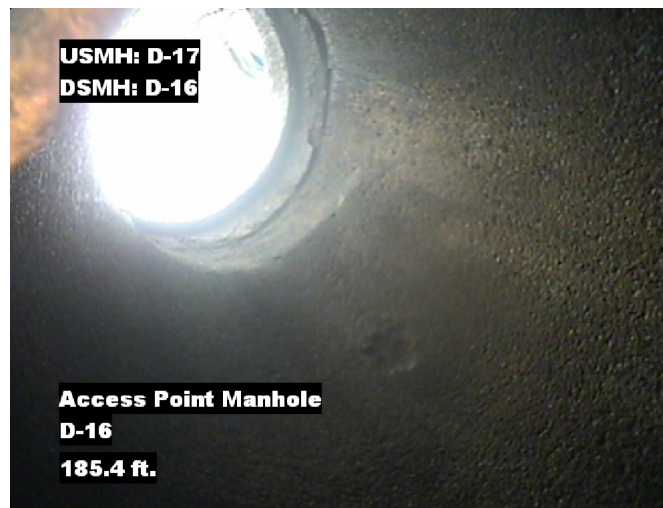


## Image Report 4/Page

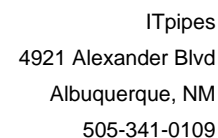
Pipe Segment Refere...	City	Street	Material	Location C...	Sewer Use
D-17-1_D-16	Oliver Springs	Airport Rd	Concrete Pipe (non-...	Light High...	Sanitary
Upstream MH D-17-1	Total Length 185.4	Year Laid	Shape Circular	Location Details	
DS Manhole D-16	Length surveyed 185.4	Year Renewed	Height 8	Width 8	Pipe Joint... 4



Distance: 183.0 ft. Grade: 0  
Condition: Tap Factory Made  
Remarks: drop line



Distance: 185.4 ft. Grade: 0  
Condition: Access Point Manhole  
Remarks: D-16



Pipe Segment Refere... D-17-1_D-16	City Oliver Springs	Street Airport Rd	Material Concrete Pipe (non-...		Location C... Light High...	Sewer Use Sanitary
Upstream MH D-17-1	Total Length 185.4	Year Laid	Shape Circular		Location Details	
DS Manhole D-16	Length surveyed 185.4	Year Renewed	Height 8	Width 8	Pipe Joint... 4	
SPR N/A	MPR N/A	PO Number 4397-03		Customer GRW		
SPRI N/A	MPRI N/A	Work Order 4397-02		Purpose		
QSR N/A	QMR N/A			Pre-Rehabilitation Survey		
OPR N/A	Surveyed By Barry_Rogers	Direction Downstream	Date 20150701		Media label	
OPRI N/A	Certificate Number U-1012-16405	Pre-Cleaning Jetting	Time 13:00		Weather Saturated	
Date Cleaned 20150601			End Time 13:12		Additional Info	

[illegible]