



## Defect Listing

Pipe Segment Refere... <b>C7-2_C7-1</b>	City <b>Oliver Springs</b>	Street <b>Mcghee St</b>	Material <b>Concrete Pipe (non-...</b>	Location C... <b>Light High...</b>	Sewer Use <b>Sanitary</b>
Upstream MH <b>C7-2</b>	Total Length <b>114.8</b>	Year Laid	Shape <b>Circular</b>	Location Details	
DS Manhole <b>C7-1</b>	Length surveyed <b>114.8</b>	Year Renewed	Height <b>8</b>	Width <b>8</b>	Pipe Joint... <b>4</b>

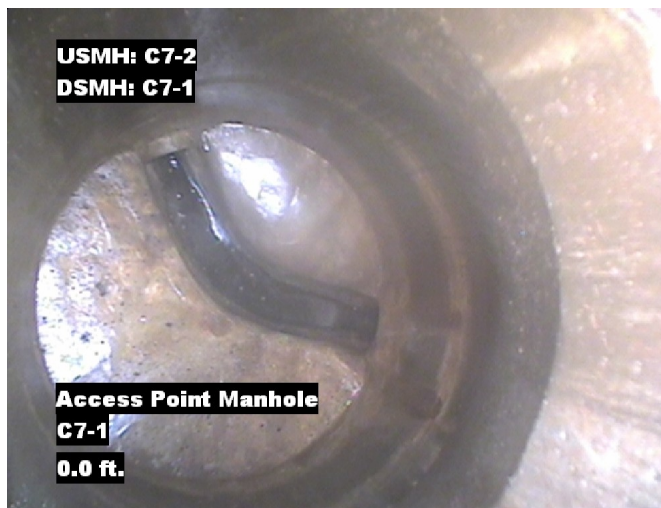
SPR <b>N/A</b>	MPR <b>4</b>	PO Number <b>4397-03</b>	Customer <b>GRW</b>
SPRI <b>N/A</b>	MPRI <b>4</b>	Work Order <b>4397-02</b>	Purpose <b>Pre-Rehabilitation Survey</b>
QSR <b>N/A</b>	QMR <b>4100</b>		
OPR <b>4</b>	Surveyed By <b>Barry Rogers</b>	Direction <b>Upstream</b>	Date <b>20150722</b>
OPRI <b>4</b>	Certificate Number <b>U-1012-16405</b>	Pre-Cleaning <b>Jetting</b>	Time <b>09:18</b>
	Date Cleaned <b>20150722</b>	End Time <b>09:25</b>	Weather <b>Dry</b>
			Media label
			Additional Info

Distance	Condition	Cont. Dfct.	Values			Joint	Clock Position		Grade
			1st	2nd	%		At/From	To	
0.0 ft.	Access Point Manhole				0	<input type="checkbox"/>			
Remarks: C7-1									
0.0 ft.	Water Level				5	<input type="checkbox"/>			
33.4 ft.	Roots Ball Joint				55	<input checked="" type="checkbox"/>	7		4
71.0 ft.	Tap Factory Made		6		0	<input type="checkbox"/>	3		
113.2 ft.	Water Level				0	<input type="checkbox"/>			
114.8 ft.	Access Point Manhole				0	<input type="checkbox"/>			
Remarks: C7-2									

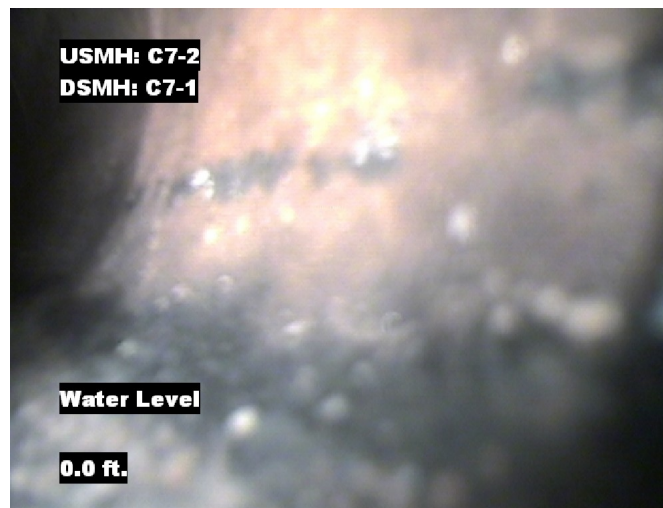


## Image Report 4/Page

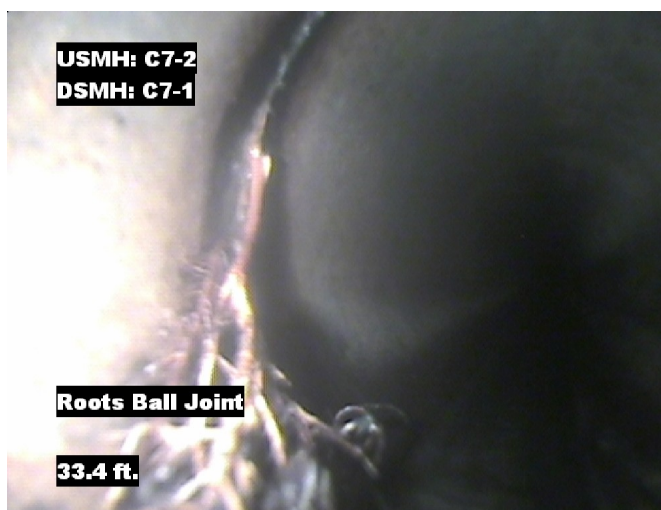
Pipe Segment Refere... <b>C7-2 C7-1</b>	<b>City</b> <b>Oliver Springs</b>	<b>Street</b> <b>Mcghee St</b>	<b>Material</b> <b>Concrete Pipe (non-...</b>		<b>Location C...</b> <b>Light High...</b>	<b>Sewer Use</b> <b>Sanitary</b>
<b>Upstream MH</b> <b>C7-2</b>	Total Length <b>114.8</b>	Year Laid	<b>Shape</b> <b>Circular</b>		Location Details	
<b>DS Manhole</b> <b>C7-1</b>	<b>Length surveyed</b> <b>114.8</b>	Year Renewed	<b>Height</b> <b>8</b>	Width <b>8</b>	Pipe Joint...	



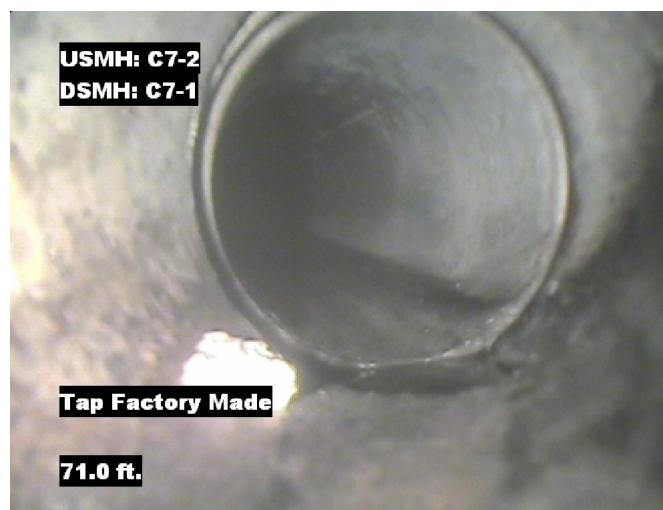
Distance: 0.0 ft. Grade: 0  
Condition: Access Point Manhole  
Remarks: C7-1



Distance: 0.0 ft. Grade: 0  
Condition: Water Level  
Remarks: N/A



Distance: 33.4 ft. Grade: 4  
Condition: Roots Ball Joint  
Remarks: N/A

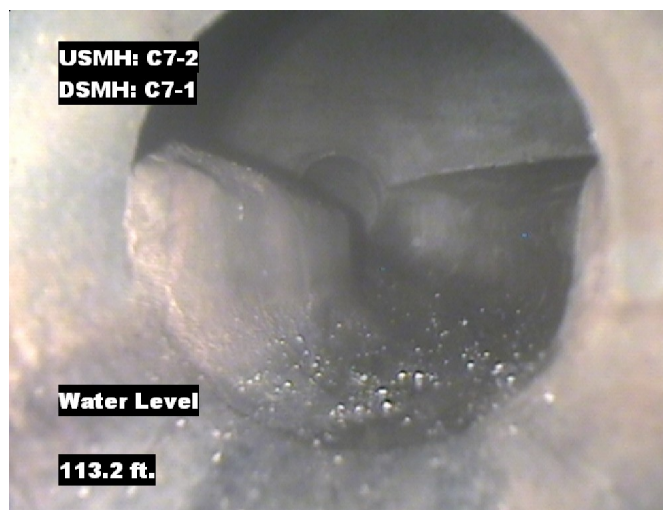


Distance: 71.0 ft. Grade: 0  
Condition: Tap Factory Made  
Remarks: N/A



## Image Report 4/Page

Pipe Segment Refere... <b>C7-2_C7-1</b>	<b>City</b> <b>Oliver Springs</b>	<b>Street</b> <b>Mcghee St</b>	<b>Material</b> <b>Concrete Pipe (non-...</b>		<b>Location C...</b> <b>Light High...</b>	<b>Sewer Use</b> <b>Sanitary</b>
<b>Upstream MH</b> <b>C7-2</b>	Total Length <b>114.8</b>	Year Laid	<b>Shape</b> <b>Circular</b>		Location Details	
<b>DS Manhole</b> <b>C7-1</b>	<b>Length surveyed</b> <b>114.8</b>	Year Renewed	<b>Height</b> <b>8</b>	Width <b>8</b>	Pipe Joint... <b>4</b>	



Distance: 113.2 ft.      Grade: 0  
Condition: Water Level  
Remarks: N/A



Distance: 114.8 ft.      Grade: 0  
Condition: Access Point Manhole  
Remarks: C7-2



## PACP Conditions

Pipe Segment Refere... <b>C7-2_C7-1</b>	City <b>Oliver Springs</b>	Street <b>Mcghee St</b>	Material <b>Concrete Pipe (non-...</b>	Location C... <b>Light High...</b>	Sewer Use <b>Sanitary</b>
Upstream MH <b>C7-2</b>	Total Length <b>114.8</b>	Year Laid	Shape <b>Circular</b>	Location Details	
DS Manhole <b>C7-1</b>	Length surveyed <b>114.8</b>	Year Renewed	Height <b>8</b>	Width <b>8</b>	Pipe Joint... <b>4</b>
SPR <b>N/A</b>	MPR <b>4</b>	PO Number <b>4397-03</b>		Customer <b>GRW</b>	
SPRI <b>N/A</b>	MPRI <b>4</b>	Work Order <b>4397-02</b>		Purpose <b>Pre-Rehabilitation Survey</b>	
QSR <b>N/A</b>	QMR <b>4100</b>				
OPR <b>4</b>	Surveyed By <b>Barry Rogers</b>	Direction <b>Upstream</b>	Date <b>20150722</b>	Media label	
OPRI <b>4</b>	Certificate Number <b>U-1012-16405</b>	Pre-Cleaning <b>Jetting</b>	Time <b>09:18</b>	Weather <b>Dry</b>	
Date Cleaned <b>20150722</b>			End Time <b>09:25</b>	Additional Info	

			Structural Ratings			O & M Ratings			Combined Ratings		
			Grade Rating	No. Occur.	Rating	Grade Rating	No. Occur.	Rating	Grade Rating	No. Occur.	Rating
Normal Defects											
Continuous Defects			1	0	0	1	0	0	1	0	0
			2	0	0	2	0	0	2	0	0
			3	0	0	3	0	0	3	0	0
			4	0	0	4	1	4	4	1	4
			5	0	0	5	0	0	5	0	0
Code	ID	Length									