



## Defect Listing

Pipe Segment Refere... <b>C7-1_C5-6</b>	City <b>Oliver Springs</b>	Street <b>Mcghee St</b>	Material <b>Concrete Pipe (non-...</b>	Location C... <b>Light High...</b>	Sewer Use <b>Sanitary</b>
Upstream MH <b>C7-1</b>	Total Length <b>325.6</b>	Year Laid	Shape <b>Circular</b>	Location Details	
DS Manhole <b>C5-6</b>	Length surveyed <b>325.6</b>	Year Renewed	Height <b>8</b>	Width <b>8</b>	Pipe Joint... <b>4</b>

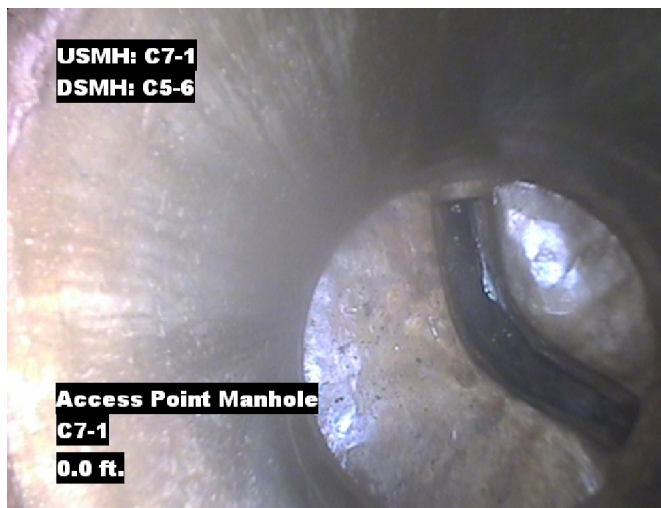
SPR <b>N/A</b>	MPR <b>N/A</b>	PO Number <b>4397-03</b>	Customer <b>GRW</b>
SPRI <b>N/A</b>	MPRI <b>N/A</b>	Work Order <b>4397-02</b>	Purpose <b>Pre-Rehabilitation Survey</b>
QSR <b>N/A</b>	QMR <b>N/A</b>		
OPR <b>N/A</b>	Surveyed By <b>Barry Rogers</b>	Direction <b>Downstream</b>	Date <b>20150722</b>
OPRI <b>N/A</b>	Certificate Number <b>U-1012-16405</b>	Pre-Cleaning <b>Jetting</b>	Time <b>09:29</b>
	Date Cleaned <b>20150722</b>	End Time <b>09:42</b>	Weather <b>Dry</b>
			Additional Info

Distance	Condition	Cont. Dfct.	Values			Joint	Clock Position		Grade
			1st	2nd	%		At/From	To	
0.0 ft.	Access Point Manhole				0	<input type="checkbox"/>			
Remarks: C7-1									
0.0 ft.	Water Level				5	<input type="checkbox"/>			
57.3 ft.	Tap Break-In		6		0	<input type="checkbox"/>	3		
174.4 ft.	Tap Factory Made		6		0	<input type="checkbox"/>	12		
246.4 ft.	Tap Factory Made		6		0	<input type="checkbox"/>	12		
323.2 ft.	Water Level				5	<input type="checkbox"/>			
325.6 ft.	Access Point Manhole				0	<input type="checkbox"/>			
Remarks: C5-6									

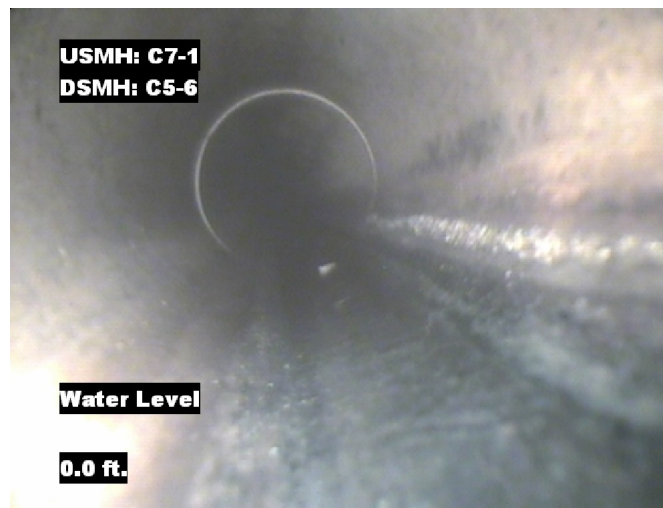


## Image Report 4/Page

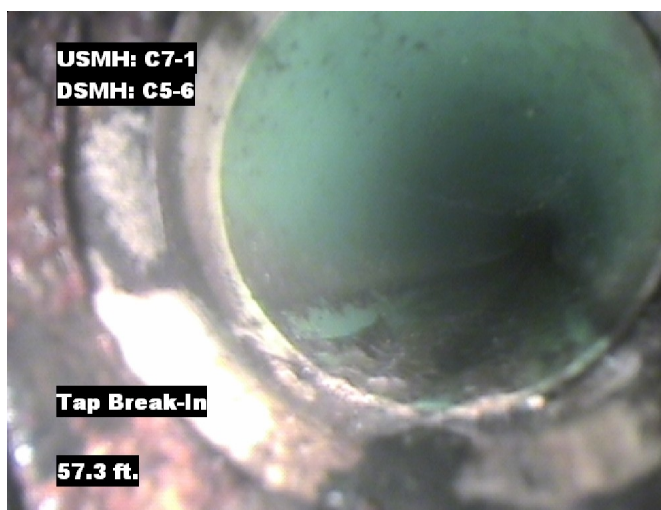
Pipe Segment Refere... <b>C7-1_C5-6</b>	City <b>Oliver Springs</b>	Street <b>Mcghee St</b>	Material <b>Concrete Pipe (non-...</b>		Location C... <b>Light High...</b>	Sewer Use <b>Sanitary</b>
Upstream MH <b>C7-1</b>	Total Length <b>325.6</b>	Year Laid	Shape <b>Circular</b>		Location Details	
DS Manhole <b>C5-6</b>	Length surveyed <b>325.6</b>	Year Renewed	Height <b>8</b>	Width <b>8</b>	Pipe Joint... <b>4</b>	



Distance: 0.0 ft. Grade: 0  
Condition: Access Point Manhole  
Remarks: C7-1



Distance: 0.0 ft. Grade: 0  
Condition: Water Level  
Remarks: N/A



Distance: 57.3 ft. Grade: 0  
Condition: Tap Break-In  
Remarks: N/A

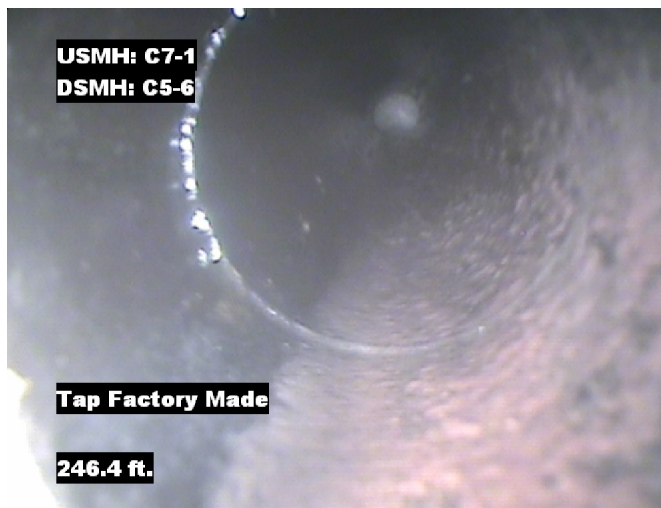


Distance: 174.4 ft. Grade: 0  
Condition: Tap Factory Made  
Remarks: N/A

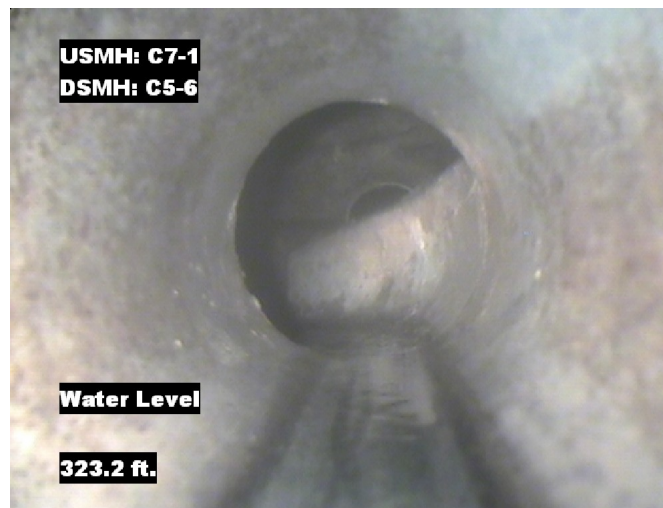


## Image Report 4/Page

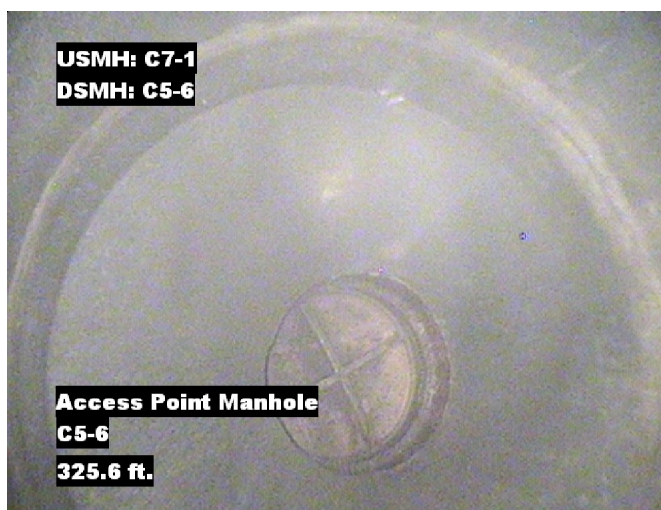
Pipe Segment Refere...	City	Street	Material	Location C...	Sewer Use
<b>C7-1_C5-6</b>	<b>Oliver Springs</b>	<b>Mcghee St</b>	<b>Concrete Pipe (non-...</b>	<b>Light High...</b>	<b>Sanitary</b>
<b>Upstream MH</b>	Total Length	Year Laid	<b>Shape</b>	Location Details	
<b>C7-1</b>	<b>325.6</b>		<b>Circular</b>		
<b>DS Manhole</b>	<b>Length surveyed</b>	Year Renewed	<b>Height</b>	Width	Pipe Joint...
<b>C5-6</b>	<b>325.6</b>		<b>8</b>	<b>8</b>	<b>4</b>



Distance: 246.4 ft. Grade: 0  
Condition: Tap Factory Made  
Remarks: N/A



Distance: 323.2 ft. Grade: 0  
Condition: Water Level  
Remarks: N/A



Distance: 325.6 ft. Grade: 0  
Condition: Access Point Manhole  
Remarks: C5-6



Pipe Segment Refere...	City	Street	Material	Location C...	Sewer Use
C7-1_C5-6	Oliver Springs	Mcghee St	Concrete Pipe (non-...	Light High...	Sanitary
Upstream MH	Total Length	Year Laid	Shape	Location Details	
C7-1	325.6		Circular		
DS Manhole	Length surveyed	Year Renewed	Height	Width	Pipe Joint...
C5-6	325.6		8	8	4
SPR	N/A	MPR	N/A	Customer	
SPRI	N/A	MPRI	N/A	GRW	
QSR	N/A	QMR	N/A	Purpose	
OPR	Surveyed By	Direction	Date	Media label	
N/A	Barry_Rogers	Downstream	20150722		
OPRI	Certificate Number	Pre-Cleaning	Time	Weather	
N/A	U-1012-16405	Jetting	09:29	Dry	
Date Cleaned			End Time	Additional Info	
20150722			09:42		

			Structural Ratings			O & M Ratings			Combined Ratings		
			Grade Rating	No. Occur.	Rating	Grade Rating	No. Occur.	Rating	Grade Rating	No. Occur.	Rating
Normal Defects											
<div>Continuous Defects</div> <div><div>CodeIDLength</div><div></div></div>			1	0	0	1	0	0	1	0	0
			2	0	0	2	0	0	2	0	0
			3	0	0	3	0	0	3	0	0
			4	0	0	4	0	0	4	0	0
			5	0	0	5	0	0	5	0	0
			Subtotals	0		Subtotals	0		Subtotals	0	
SUMMARY			Pipe Rating	0		Pipe Rating	0		Overall Pipe Rating	0	
			Structural Index	0		O&M Index	0		Overall Index	0	
			Str. Quick Rating	0000		O&M Quick Rating	0000		Ovrl. Quick Rating	0000	