



Defect Listing

Pipe Segment Refere... C5-14_C5-13	City Oliver Springs	Street Cherokee Place	Material PolyVinyl Chloride	Location C... Light High...	Sewer Use Sanitary
Upstream MH C5-14	Total Length 166.1	Year Laid	Shape Circular	Location Details Apartment Complex	
DS Manhole C5-13	Length surveyed 166.1	Year Renewed	Height 8	Width 8	Pipe Joint... 13

SPR N/A	MPR 13	PO Number 4397-03		Customer GRW	
SPRI N/A	MPRI 3.3	Work Order 4397-02		Purpose Pre-Rehabilitation Survey	
QSR N/A	QMR 4231				
OPR 13	Surveyed By Barry Rogers	Direction Downstream	Date 20150721	Media label	
OPRI 3.3	Certificate Number U-1012-16405	Pre-Cleaning Jetting	Time 10:35	Weather Damp	
Date Cleaned 20150721			End Time 10:43	Additional Info	

Distance	Condition	Cont. Dfct.	Values			Joint	Clock Position		Grade
			1st	2nd	%		At/From	To	
0.0 ft.	Access Point Manhole				0	<input type="checkbox"/>			
Remarks: C5-14									
0.0 ft.	Water Level				5	<input type="checkbox"/>			
98.5 ft.	Water Level Sag				35	<input type="checkbox"/>			3
102.7 ft.	Camera Underwater	S01			0	<input type="checkbox"/>			4
105.6 ft.	Deposits Attached Grease				5	<input type="checkbox"/>	12		2
114.1 ft.	Camera Underwater	F01			0	<input type="checkbox"/>			4
164.8 ft.	Water Level				5	<input type="checkbox"/>			
166.1 ft.	Access Point Manhole				0	<input type="checkbox"/>			
Remarks: C5-13									

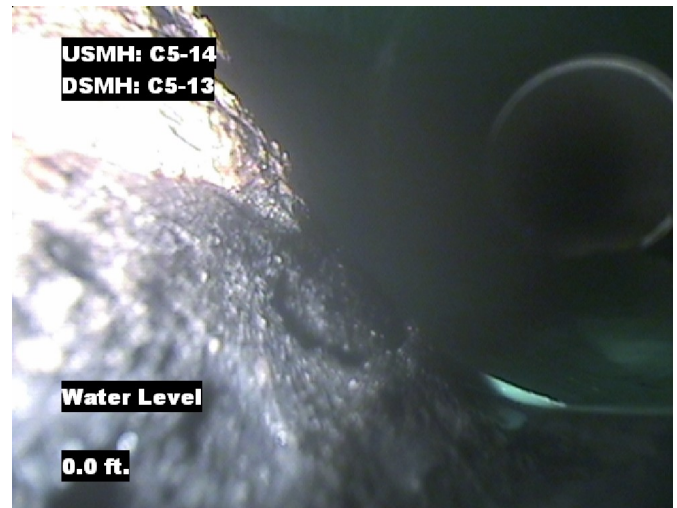


Image Report 4/Page

Pipe Segment Refere... C5-14_C5-13	City Oliver Springs	Street Cherokee Place	Material PolyVinyl Chloride		Location C... Light High...	Sewer Use Sanitary
Upstream MH C5-14	Total Length 166.1	Year Laid	Shape Circular		Location Details Apartment Complex	
DS Manhole C5-13	Length surveyed 166.1	Year Renewed	Height 8	Width 8	Pipe Joint... 13	



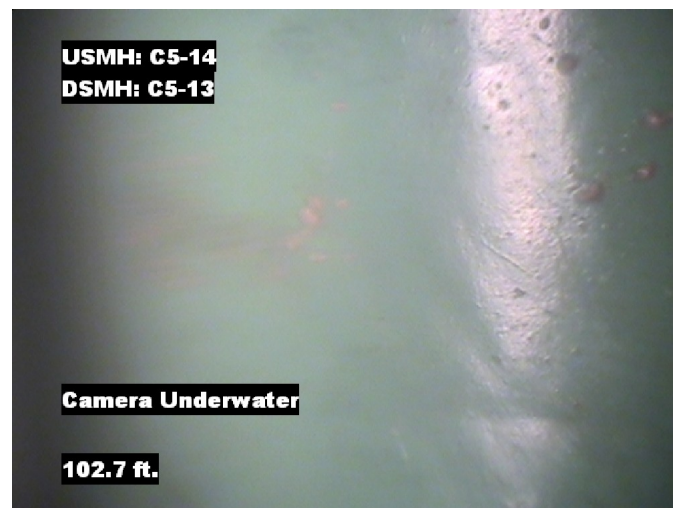
Distance: 0.0 ft. Grade: 0
Condition: Access Point Manhole
Remarks: C5-14



Distance: 0.0 ft. Grade: 0
Condition: Water Level
Remarks: N/A



Distance: 98.5 ft. Grade: 3
Condition: Water Level Sag
Remarks: N/A

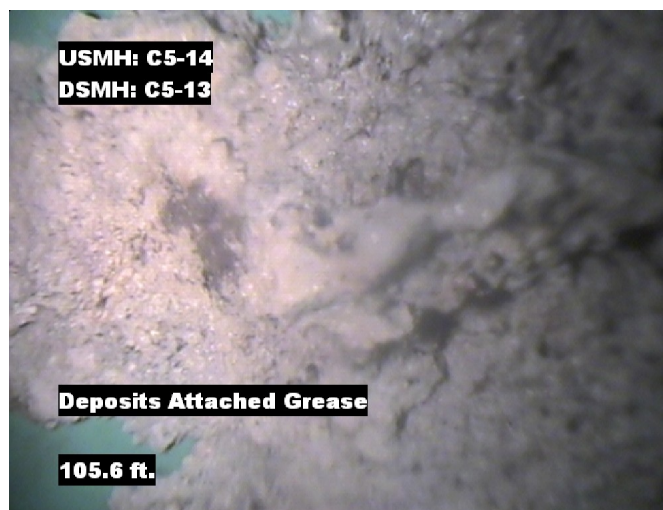


Distance: 102.7 ft. Grade: 4
Condition: Camera Underwater
Remarks: N/A

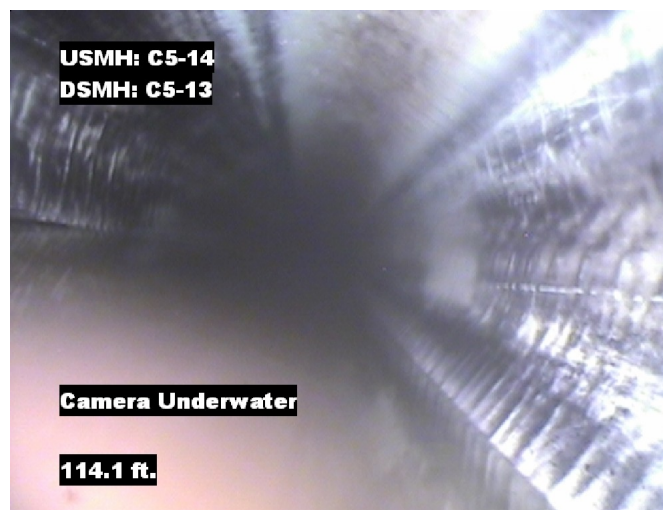


Image Report 4/Page

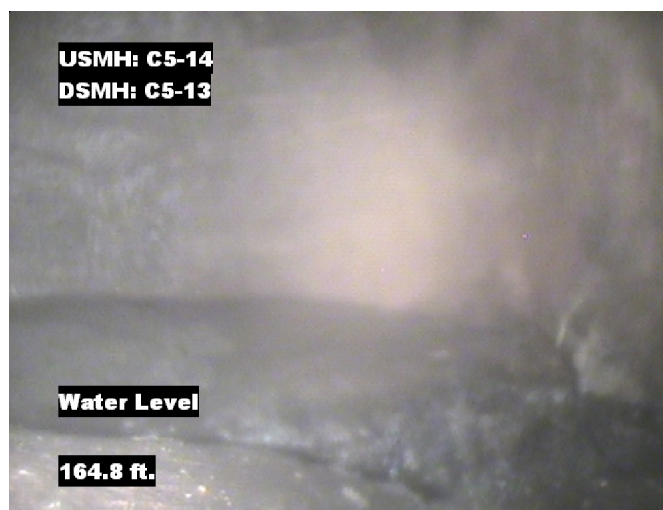
Pipe Segment Refere...	City	Street	Material	Location C...	Sewer Use
C5-14_C5-13	Oliver Springs	Cherokee Place	PolyVinyl Chloride	Light High...	Sanitary
Upstream MH	Total Length	Year Laid	Shape	Location Details	
C5-14	166.1		Circular	Apartment Complex	
DS Manhole	Length surveyed	Year Renewed	Height	Width	Pipe Joint...
C5-13	166.1		8	8	13



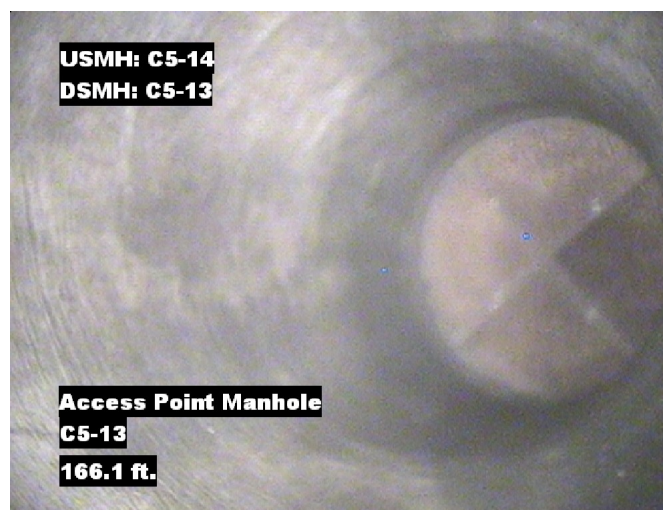
Distance: 105.6 ft. Grade: 2
Condition: Deposits Attached Grease
Remarks: N/A



Distance: 114.1 ft. Grade: 4
Condition: Camera Underwater
Remarks: N/A



Distance: 164.8 ft. Grade: 0
Condition: Water Level
Remarks: N/A



Distance: 166.1 ft. Grade: 0
Condition: Access Point Manhole
Remarks: C5-13



PACP Conditions

Pipe Segment Refere... C5-14_C5-13	City Oliver Springs	Street Cherokee Place	Material PolyVinyl Chloride	Location C... Light High...	Sewer Use Sanitary
Upstream MH C5-14	Total Length 166.1	Year Laid	Shape Circular	Location Details Apartment Complex	
DS Manhole C5-13	Length surveyed 166.1	Year Renewed	Height 8	Width 8	Pipe Joint... 13
SPR N/A	MPR 13	PO Number 4397-03		Customer GRW	
SPRI N/A	MPRI 3.3	Work Order 4397-02		Purpose Pre-Rehabilitation Survey	
QSR N/A	QMR 4231				
OPR 13	Surveyed By Barry Rogers	Direction Downstream	Date 20150721	Media label	
OPRI 3.3	Certificate Number U-1012-16405	Pre-Cleaning Jetting	Time 10:35	Weather Damp	
Date Cleaned 20150721			End Time 10:43	Additional Info	

Normal Defects			Structural Ratings			O & M Ratings			Combined Ratings		
			Grade Rating	No. Occur.	Rating	Grade Rating	No. Occur.	Rating	Grade Rating	No. Occur.	Rating
Continuous Defects			1	0	0	1	0	0	1	0	0
			2	0	0	2	1	2	2	1	2
			3	0	0	3	1	3	3	1	3
			4	0	0	4	0	0	4	0	0
			5	0	0	5	0	0	5	0	0
Code	ID	Length	0	0	0	4	2	8	4	2	8
MCU	F01	11.4									
			Subtotals	0		Subtotals	4		Subtotals	4	
SUMMARY			Pipe Rating		0	Pipe Rating		13	Overall Pipe Rating		13
			Structural Index		0	O&M Index		3.3	Overall Index		3.3
			Str. Quick Rating		0000	O&M Quick Rating		4231	Ovrl. Quick Rating		4231