



## Defect Listing

Pipe Segment Refere... <b>C5-12_C5-11</b>	City <b>Oliver Springs</b>	Street <b>Strutt St</b>	Material <b>Concrete Pipe (non-...</b>	Location C... <b>Light High...</b>	Sewer Use <b>Sanitary</b>
Upstream MH <b>C5-12</b>	Total Length <b>209.2</b>	Year Laid	Shape <b>Circular</b>	Location Details	
DS Manhole <b>C5-11</b>	Length surveyed <b>209.2</b>	Year Renewed	Height <b>8</b>	Width <b>8</b>	Pipe Joint... <b>4</b>

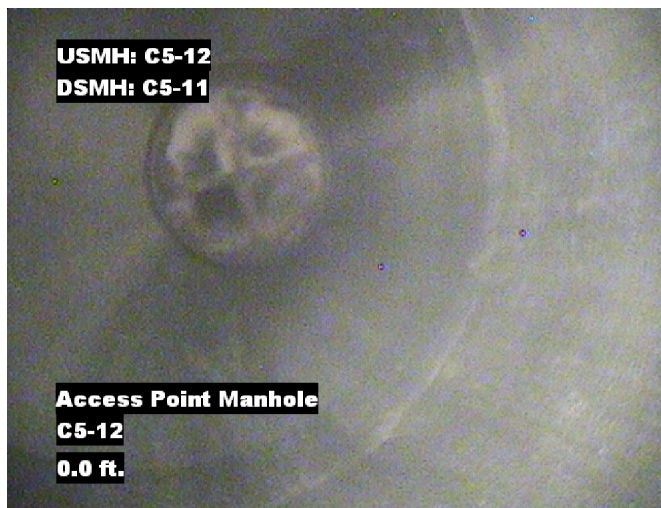
SPR <b>N/A</b>	MPR <b>50</b>	PO Number <b>4397-03</b>	Customer <b>GRW</b>
SPRI <b>N/A</b>	MPRI <b>2</b>	Work Order <b>4397-02</b>	Purpose <b>Pre-Rehabilitation Survey</b>
QSR <b>N/A</b>	QMR <b>2D00</b>		
OPR <b>50</b>	Surveyed By <b>Barry Rogers</b>	Direction <b>Downstream</b>	Date <b>20150721</b>
OPRI <b>2</b>	Certificate Number <b>U-1012-16405</b>	Pre-Cleaning <b>Jetting</b>	Time <b>12:36</b>
	Date Cleaned <b>20150721</b>	End Time <b>12:48</b>	Weather <b>Dry</b>
			Additional Info

Distance	Condition	Cont. Dfct.	Values			Joint	Clock Position		Grade
			1st	2nd	%		At/From	To	
0.0 ft.	Access Point Manhole				0	<input type="checkbox"/>			
Remarks: C5-12									
0.0 ft.	Water Level				5	<input type="checkbox"/>			
53.5 ft.	Deposits Attached Grease				5	<input type="checkbox"/>	3	10	2
86.6 ft.	Deposits Attached Grease	S01			5	<input type="checkbox"/>	2	10	2
208.1 ft.	Deposits Attached Grease	F01			5	<input type="checkbox"/>	2	10	2
208.1 ft.	Water Level				5	<input type="checkbox"/>			
209.2 ft.	Access Point Manhole				0	<input type="checkbox"/>			
Remarks: C5-11									

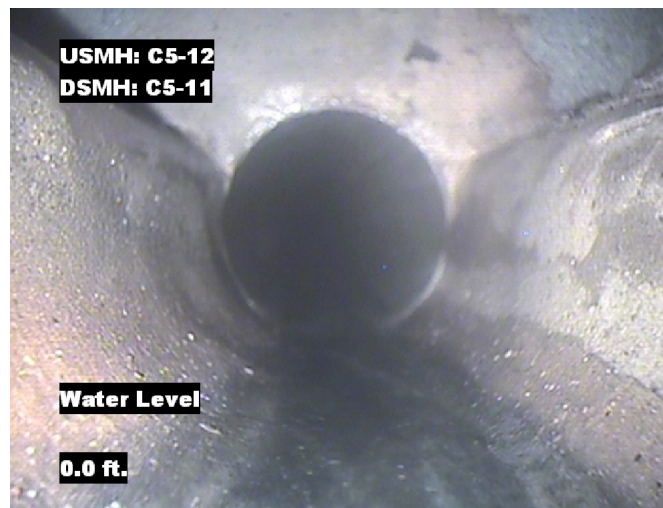


## Image Report 4/Page

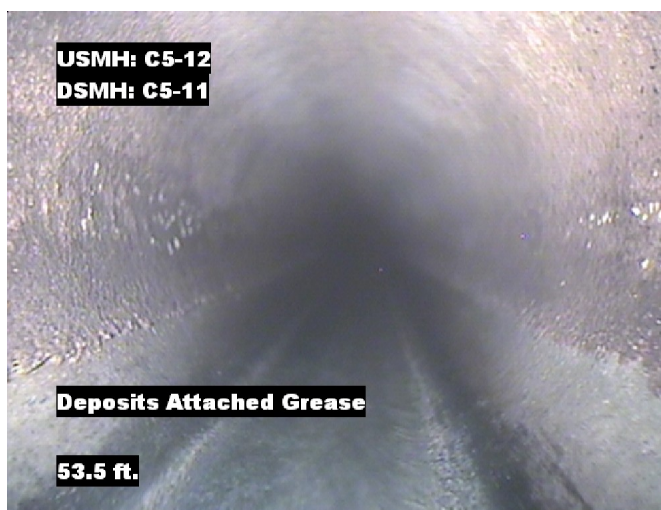
Pipe Segment Refere... <b>C5-12_C5-11</b>	<b>City</b> <b>Oliver Springs</b>	<b>Street</b> <b>Strutt St</b>	<b>Material</b> <b>Concrete Pipe (non-...</b>		<b>Location C...</b> <b>Light High...</b>	<b>Sewer Use</b> <b>Sanitary</b>
<b>Upstream MH</b> <b>C5-12</b>	Total Length <b>209.2</b>	Year Laid	<b>Shape</b> <b>Circular</b>		Location Details	
<b>DS Manhole</b> <b>C5-11</b>	<b>Length surveyed</b> <b>209.2</b>	Year Renewed	<b>Height</b> <b>8</b>	Width <b>8</b>	Pipe Joint...	



Distance: 0.0 ft. Grade: 0  
Condition: Access Point Manhole  
Remarks: C5-12



Distance: 0.0 ft. Grade: 0  
Condition: Water Level  
Remarks: N/A



Distance: 53.5 ft. Grade: 2  
Condition: Deposits Attached Grease  
Remarks: N/A



Distance: 86.6 ft. Grade: 2  
Condition: Deposits Attached Grease  
Remarks: N/A



## Image Report 4/Page

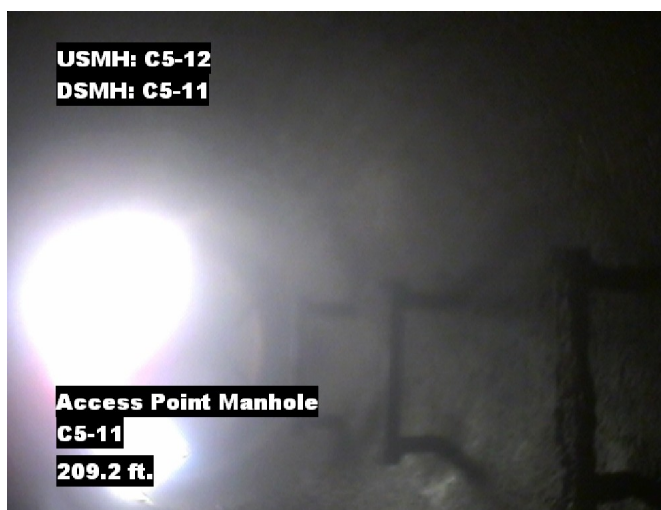
Pipe Segment Refere...	City	Street	Material	Location C...	Sewer Use
C5-12_C5-11	Oliver Springs	Strutt St	Concrete Pipe (non-...	Light High...	Sanitary
Upstream MH C5-12	Total Length 209.2	Year Laid	Shape Circular	Location Details	
DS Manhole C5-11	Length surveyed 209.2	Year Renewed	Height 8	Width 8	Pipe Joint... 4



Distance: 208.1 ft. Grade: 2  
Condition: Deposits Attached Grease  
Remarks: N/A



Distance: 208.1 ft. Grade: 0  
Condition: Water Level  
Remarks: N/A



Distance: 209.2 ft. Grade: 0  
Condition: Access Point Manhole  
Remarks: C5-11



## PACP Conditions

Pipe Segment Refere... <b>C5-12_C5-11</b>	City <b>Oliver Springs</b>	Street <b>Strutt St</b>	Material <b>Concrete Pipe (non-...</b>	Location C... <b>Light High...</b>	Sewer Use <b>Sanitary</b>
Upstream MH <b>C5-12</b>	Total Length <b>209.2</b>	Year Laid	Shape <b>Circular</b>	Location Details	
DS Manhole <b>C5-11</b>	Length surveyed <b>209.2</b>	Year Renewed	Height <b>8</b>	Width <b>8</b>	Pipe Joint... <b>4</b>
SPR <b>N/A</b>	MPR <b>50</b>	PO Number <b>4397-03</b>		Customer <b>GRW</b>	
SPRI <b>N/A</b>	MPRI <b>2</b>	Work Order <b>4397-02</b>		Purpose <b>Pre-Rehabilitation Survey</b>	
QSR <b>N/A</b>	QMR <b>2D00</b>				
OPR <b>50</b>	Surveyed By <b>Barry Rogers</b>	Direction <b>Downstream</b>	Date <b>20150721</b>	Media label	
OPRI <b>2</b>	Certificate Number <b>U-1012-16405</b>	Pre-Cleaning <b>Jetting</b>	Time <b>12:36</b>	Weather <b>Dry</b>	
Date Cleaned <b>20150721</b>			End Time <b>12:48</b>	Additional Info	

Normal Defects			Structural Ratings			O & M Ratings			Combined Ratings		
			Grade Rating	No. Occur.	Rating	Grade Rating	No. Occur.	Rating	Grade Rating	No. Occur.	Rating
Continuous Defects			1	0	0	1	0	0	1	0	0
			2	0	0	2	1	2	2	1	2
			3	0	0	3	0	0	3	0	0
			4	0	0	4	0	0	4	0	0
			5	0	0	5	0	0	5	0	0
Code	ID	Length	0	0	0	2	24	48	2	24	48
DAGS	F01	121.5									
			Subtotals	0		Subtotals	25		Subtotals	25	
SUMMARY			Pipe Rating		0	Pipe Rating		50	Overall Pipe Rating		50
			Structural Index		0	O&M Index		2.0	Overall Index		2.0
			Str. Quick Rating		0000	O&M Quick Rating		2D00	Ovrl. Quick Rating		2D00