



## Defect Listing

Pipe Segment Refere... <b>C17-3_C17-2</b>	City <b>Oliver Springs</b>	Street <b>Park Lane</b>	Material <b>Concrete Pipe (non-...</b>	Location C... <b>Light High...</b>	Sewer Use <b>Sanitary</b>
Upstream MH <b>C17-3</b>	Total Length <b>356.3</b>	Year Laid	Shape <b>Circular</b>	Location Details	
DS Manhole <b>C17-2</b>	Length surveyed <b>356.3</b>	Year Renewed	Height <b>8</b>	Width <b>8</b>	Pipe Joint... <b>4</b>

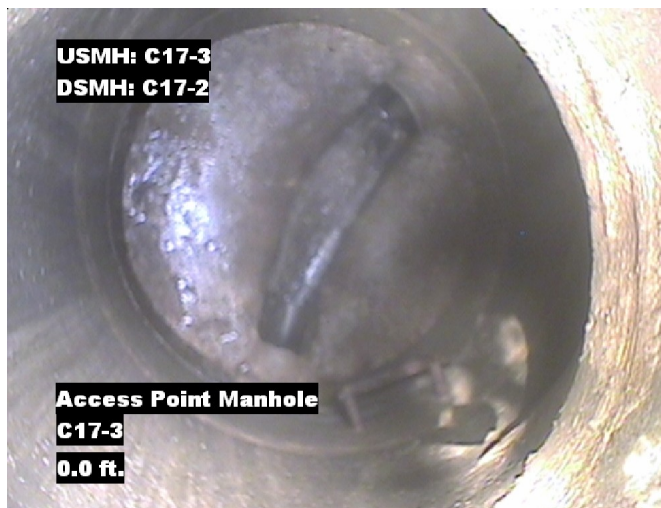
SPR <b>N/A</b>	MPR <b>N/A</b>	PO Number <b>4397-03</b>	Customer <b>GRW</b>
SPRI <b>N/A</b>	MPRI <b>N/A</b>	Work Order <b>4397-02</b>	Purpose <b>Pre-Rehabilitation Survey</b>
QSR <b>N/A</b>	QMR <b>N/A</b>		
OPR <b>N/A</b>	Surveyed By <b>Barry Rogers</b>	Direction <b>Downstream</b>	Date <b>20150710</b>
OPRI <b>N/A</b>	Certificate Number <b>U-1012-16405</b>	Pre-Cleaning <b>Jetting</b>	Time <b>14:38</b>
	Date Cleaned <b>20150710</b>	End Time <b>14:58</b>	Weather <b>Dry</b>
			Additional Info

Distance	Condition	Cont. Dfct.	Values			Joint	Clock Position		Grade
			1st	2nd	%		At/From	To	
0.0 ft.	Access Point Manhole				0	<input type="checkbox"/>			
Remarks: C17-3									
0.0 ft.	Water Level				5	<input type="checkbox"/>			
109.2 ft.	Tap Factory Made Capped		8		0	<input type="checkbox"/>	9		
218.7 ft.	Tap Factory Made		4		0	<input type="checkbox"/>	9		
300.3 ft.	Tap Factory Made		6		0	<input type="checkbox"/>	10		
353.4 ft.	Water Level				5	<input type="checkbox"/>			
356.3 ft.	Access Point Manhole				0	<input type="checkbox"/>			
Remarks: C17-2									



## Image Report 4/Page

Pipe Segment Refere...	City	Street	Material	Location C...	Sewer Use
<b>C17-3_C17-2</b>	<b>Oliver Springs</b>	<b>Park Lane</b>	<b>Concrete Pipe (non-...</b>	<b>Light High...</b>	<b>Sanitary</b>
<b>Upstream MH</b>	Total Length	Year Laid	<b>Shape</b>	Location Details	
<b>C17-3</b>	<b>356.3</b>		<b>Circular</b>		
<b>DS Manhole</b>	<b>Length surveyed</b>	Year Renewed	<b>Height</b>	Width	Pipe Joint...
<b>C17-2</b>	<b>356.3</b>		<b>8</b>	<b>8</b>	<b>4</b>



Distance: 0.0 ft. Grade: 0  
Condition: Access Point Manhole  
Remarks: C17-3



Distance: 0.0 ft. Grade: 0  
Condition: Water Level  
Remarks: N/A



Distance: 109.2 ft. Grade: 0  
Condition: Tap Factory Made Capped  
Remarks: N/A



Distance: 218.7 ft. Grade: 0  
Condition: Tap Factory Made  
Remarks: N/A





## Image Report 4/Page

Pipe Segment Refere...	City	Street	Material	Location C...	Sewer Use
<b>C17-3_C17-2</b>	<b>Oliver Springs</b>	<b>Park Lane</b>	<b>Concrete Pipe (non-...</b>	<b>Light High...</b>	<b>Sanitary</b>
<b>Upstream MH</b>	Total Length	Year Laid	<b>Shape</b>	Location Details	
<b>C17-3</b>	<b>356.3</b>		<b>Circular</b>		
<b>DS Manhole</b>	Length surveyed	Year Renewed	<b>Height</b>	Width	Pipe Joint...
<b>C17-2</b>	<b>356.3</b>		<b>8</b>	<b>8</b>	<b>4</b>



Distance: 300.3 ft. Grade: 0  
Condition: Tap Factory Made  
Remarks: N/A



Distance: 353.4 ft. Grade: 0  
Condition: Water Level  
Remarks: N/A



Distance: 356.3 ft. Grade: 0  
Condition: Access Point Manhole  
Remarks: C17-2



Pipe Segment Refere... C17-3_C17-2	City Oliver Springs	Street Park Lane	Material Concrete Pipe (non-...		Location C... Light High...	Sewer Use Sanitary
Upstream MH C17-3	Total Length 356.3	Year Laid	Shape Circular		Location Details	
DS Manhole C17-2	Length surveyed 356.3	Year Renewed	Height 8	Width 8	Pipe Joint... 4	
SPR N/A	MPR N/A	PO Number 4397-03		Customer GRW		
SPRI N/A	MPRI N/A	Work Order 4397-02		Purpose		
QSR N/A	QMR N/A			Pre-Rehabilitation Survey		
OPR N/A	Surveyed By Barry_Rogers	Direction Downstream	Date 20150710		Media label	
OPRI N/A	Certificate Number U-1012-16405	Pre-Cleaning Jetting	Time 14:38		Weather Dry	
Date Cleaned 20150710		End Time 14:58		Additional Info		

			Structural Ratings			O & M Ratings			Combined Ratings		
			Grade Rating	No. Occur.	Rating	Grade Rating	No. Occur.	Rating	Grade Rating	No. Occur.	Rating
Normal Defects											
<div>Continuous Defects</div> <div>CodeIDLength</div>			1	0	0	1	0	0	1	0	0
			2	0	0	2	0	0	2	0	0
			3	0	0	3	0	0	3	0	0
			4	0	0	4	0	0	4	0	0
			5	0	0	5	0	0	5	0	0
			Subtotals	0		Subtotals	0		Subtotals	0	
SUMMARY			Pipe Rating	0		Pipe Rating	0		Overall Pipe Rating	0	
			Structural Index	0		O&M Index	0		Overall Index	0	
			Str. Quick Rating	0000		O&M Quick Rating	0000		Ovrl. Quick Rating	0000	