



## Defect Listing

Pipe Segment Refere... <b>C17-1_C-26</b>	City <b>Oliver Springs</b>	Street <b>Foxwood Cir</b>	Material <b>Concrete Pipe (non-...</b>	Location C... <b>Easement/R...</b>	Sewer Use <b>Sanitary</b>
Upstream MH <b>C17-1</b>	Total Length <b>67.5</b>	Year Laid	Shape <b>Circular</b>	Location Details	
DS Manhole <b>C-26</b>	Length surveyed <b>67.5</b>	Year Renewed	Height <b>8</b>	Width <b>8</b>	Pipe Joint... <b>4</b>

SPR <b>N/A</b>	MPR <b>3</b>	PO Number <b>4397-03</b>	Customer <b>GRW</b>
SPRI <b>N/A</b>	MPRI <b>1.5</b>	Work Order <b>4397-02</b>	Purpose <b>Pre-Rehabilitation Survey</b>
QSR <b>N/A</b>	QMR <b>2111</b>		
OPR <b>3</b>	Surveyed By <b>Barry Rogers</b>	Direction <b>Upstream</b>	Date <b>20150713</b>
OPRI <b>1.5</b>	Certificate Number <b>U-1012-16405</b>	Pre-Cleaning <b>Jetting</b>	Time <b>08:24</b>
	Date Cleaned <b>20150713</b>	End Time <b>08:33</b>	Weather <b>Damp</b>
			Media label
			Additional Info

Distance	Condition	Cont. Dfct.	Values			Joint	Clock Position		Grade
			1st	2nd	%		At/From	To	
0.0 ft.	Access Point Manhole				0	<input type="checkbox"/>			
Remarks: C-26									
0.0 ft.	Water Level				5	<input type="checkbox"/>			
30.5 ft.	Roots Fine Barrell				0	<input type="checkbox"/>	3	9	2
32.5 ft.	Roots Fine Joint				0	<input checked="" type="checkbox"/>	1	11	1
65.8 ft.	Water Level				5	<input type="checkbox"/>			
67.5 ft.	Access Point Manhole				0	<input type="checkbox"/>			
Remarks: C17-1									



## Image Report 4/Page

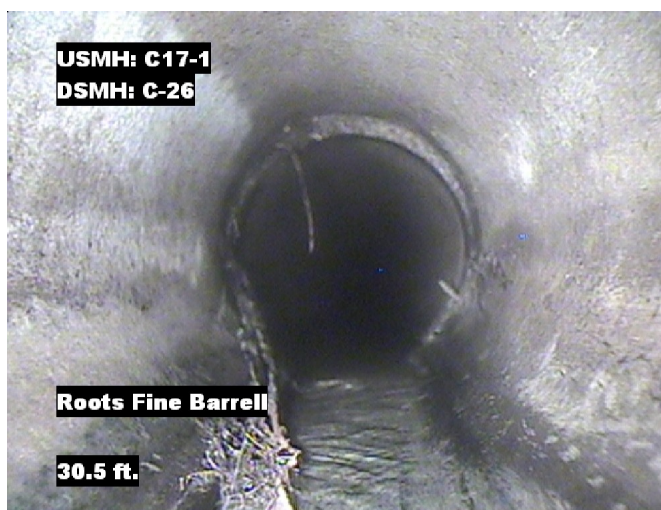
Pipe Segment Refere... <b>C17-1_C-26</b>	<b>City</b> <b>Oliver Springs</b>	<b>Street</b> <b>Foxwood Cir</b>	<b>Material</b> <b>Concrete Pipe (non-...</b>		<b>Location C...</b> <b>Easement/R...</b>	<b>Sewer Use</b> <b>Sanitary</b>
<b>Upstream MH</b> <b>C17-1</b>	Total Length <b>67.5</b>	Year Laid	<b>Shape</b> <b>Circular</b>		Location Details	
<b>DS Manhole</b> <b>C-26</b>	<b>Length surveyed</b> <b>67.5</b>	Year Renewed	<b>Height</b> <b>8</b>	Width <b>8</b>	Pipe Joint...	



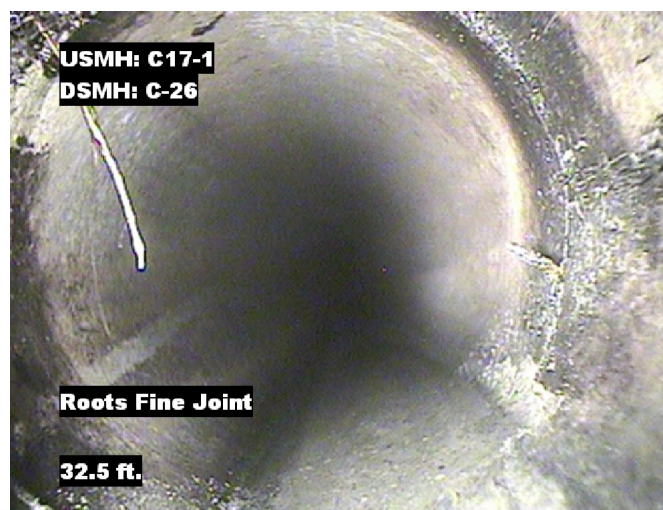
Distance: 0.0 ft. Grade: 0  
Condition: Access Point Manhole  
Remarks: C-26



Distance: 0.0 ft. Grade: 0  
Condition: Water Level  
Remarks: N/A



Distance: 30.5 ft. Grade: 2  
Condition: Roots Fine Barrell  
Remarks: N/A

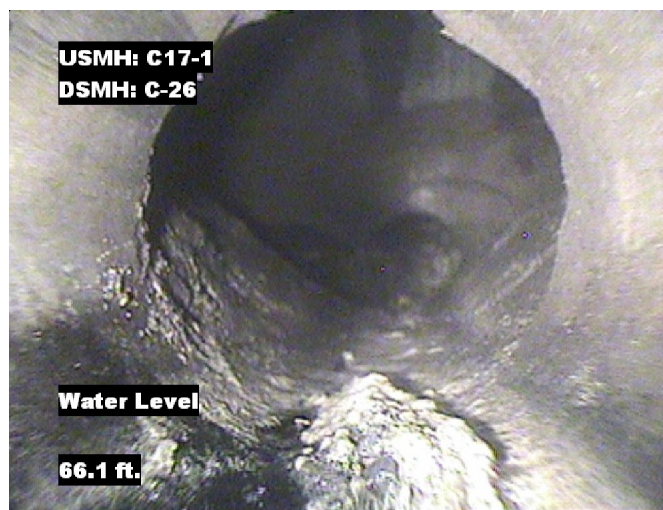


Distance: 32.5 ft. Grade: 1  
Condition: Roots Fine Joint  
Remarks: N/A



## Image Report 4/Page

Pipe Segment Refere...	City	Street	Material	Location C...	Sewer Use
<b>C17-1_C-26</b>	<b>Oliver Springs</b>	<b>Foxwood Cir</b>	<b>Concrete Pipe (non-...</b>	<b>Easement/R...</b>	<b>Sanitary</b>
<b>Upstream MH</b> <b>C17-1</b>	Total Length <b>67.5</b>	Year Laid	<b>Shape</b> <b>Circular</b>	Location Details	
<b>DS Manhole</b> <b>C-26</b>	<b>Length surveyed</b> <b>67.5</b>	Year Renewed	<b>Height</b> <b>8</b>	Width <b>8</b>	Pipe Joint... <b>4</b>



Distance: 65.8 ft.      Grade: 0  
Condition: Water Level  
Remarks: N/A



Distance: 67.5 ft.      Grade: 0  
Condition: Access Point Manhole  
Remarks: C17-1



## PACP Conditions

Pipe Segment Refere... C17-1_C-26	City Oliver Springs	Street Foxwood Cir	Material Concrete Pipe (non-...		Location C... Easement/R...	Sewer Use Sanitary
Upstream MH C17-1	Total Length 67.5	Year Laid	Shape Circular		Location Details	
DS Manhole C-26	Length surveyed 67.5	Year Renewed	Height 8	Width 8	Pipe Joint... 4	
SPR N/A	MPR 3	PO Number 4397-03		Customer GRW		
SPRI N/A	MPRI 1.5	Work Order 4397-02		Purpose Pre-Rehabilitation Survey		
QSR N/A	QMR 2111					
OPR 3	Surveyed By Barry_Rogers	Direction Upstream	Date 20150713		Media label	
OPRI 1.5	Certificate Number U-1012-16405	Pre-Cleaning Jetting	Time 08:24		Weather Damp	
Date Cleaned 20150713			End Time 08:33		Additional Info	

			Structural Ratings			O & M Ratings			Combined Ratings		
			Grade Rating	No. Occur.	Rating	Grade Rating	No. Occur.	Rating	Grade Rating	No. Occur.	Rating
Normal Defects											
Continuous Defects			1	0	0	1	1	1	1	1	1
			2	0	0	2	1	2	2	1	2
			3	0	0	3	0	0	3	0	0
			4	0	0	4	0	0	4	0	0
			5	0	0	5	0	0	5	0	0
Code	ID	Length									
			Subtotals	0		Subtotals	2		Subtotals	2	
SUMMARY			Pipe Rating	0		Pipe Rating	3		Overall Pipe Rating	3	
			Structural Index	0		O&M Index	1.5		Overall Index	1.5	
			Str. Quick Rating	0000		O&M Quick Rating	2111		Ovrl. Quick Rating	2111	