



## Defect Listing

Pipe Segment Refere... <b>C12-1A_C-20</b>	City <b>Oliver Springs</b>	Street <b>Maple Ave</b>	Material <b>Concrete Pipe (non-...</b>	Location C... <b>Railway</b>	Sewer Use <b>Sanitary</b>
Upstream MH <b>C12-1A</b>	Total Length <b>243.5</b>	Year Laid	Shape <b>Circular</b>	Location Details <b>Runs under RailRoad</b>	
DS Manhole <b>C-20</b>	Length surveyed <b>243.5</b>	Year Renewed	Height <b>8</b>	Width <b>8</b>	Pipe Joint... <b>4</b>

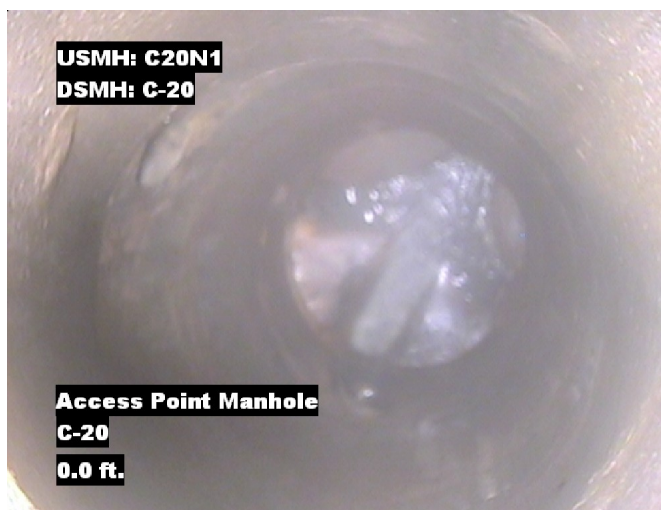
SPR <b>3</b>	MPR <b>8</b>	PO Number <b>4397-03</b>	Customer <b>GRW</b>
SPRI <b>3</b>	MPRI <b>4</b>	Work Order <b>4397-02</b>	Purpose <b>Pre-Rehabilitation Survey</b>
QSR <b>3100</b>	QMR <b>4200</b>		
OPR <b>11</b>	Surveyed By <b>Barry Rogers</b>	Direction <b>Upstream</b>	Date <b>20150716</b>
OPRI <b>3.7</b>	Certificate Number <b>U-1012-16405</b>	Pre-Cleaning <b>Jetting</b>	Time <b>15:08</b>
	Date Cleaned <b>20150716</b>	End Time <b>15:18</b>	Weather <b>Dry</b>
			Media label
			Additional Info

Distance	Condition	Cont. Dfct.	Values			Joint	Clock Position		Grade
			1st	2nd	%		At/From	To	
0.0 ft.	Access Point Manhole				0	<input type="checkbox"/>			
Remarks: C-20									
0.0 ft.	Water Level				45	<input type="checkbox"/>			
6.0 ft.	Camera Underwater	S01			0	<input type="checkbox"/>			4
17.8 ft.	Camera Underwater	F01			0	<input type="checkbox"/>			4
72.8 ft.	Lining Failure Delaminating				0	<input type="checkbox"/>	3	6	3
92.0 ft.	Tap Factory Made		6		0	<input type="checkbox"/>	9		
239.8 ft.	Water Level				5	<input type="checkbox"/>			
243.5 ft.	Access Point Manhole				0	<input type="checkbox"/>			
Remarks: C12-1A									

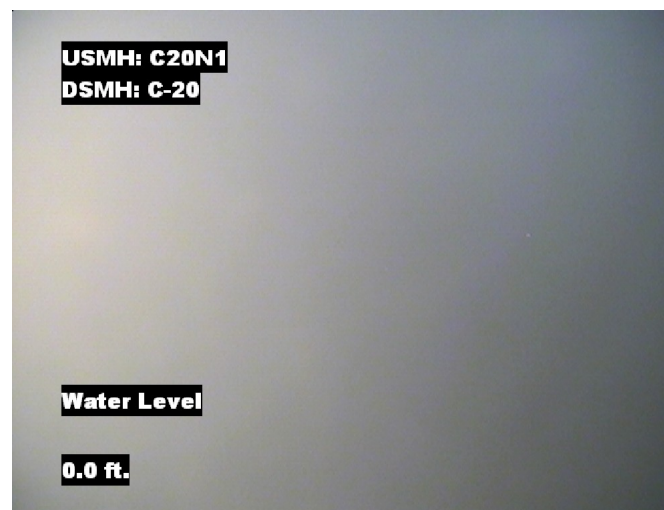


## Image Report 4/Page

Pipe Segment Refere... <b>C12-1A_C-20</b>	City <b>Oliver Springs</b>	Street <b>Maple Ave</b>	Material <b>Concrete Pipe (non-...</b>		Location C... <b>Railway</b>	Sewer Use <b>Sanitary</b>
Upstream MH <b>C12-1A</b>	Total Length <b>243.5</b>	Year Laid	Shape <b>Circular</b>		Location Details <b>Runs under RailRoad</b>	
DS Manhole <b>C-20</b>	Length surveyed <b>243.5</b>	Year Renewed	Height <b>8</b>	Width <b>8</b>	Pipe Joint... <b>4</b>	



Distance: 0.0 ft. Grade: 0  
Condition: Access Point Manhole  
Remarks: C-20



Distance: 0.0 ft. Grade: 0  
Condition: Water Level  
Remarks: N/A



Distance: 6.0 ft. Grade: 4  
Condition: Camera Underwater  
Remarks: N/A



Distance: 17.8 ft. Grade: 4  
Condition: Camera Underwater  
Remarks: N/A



## Image Report 4/Page

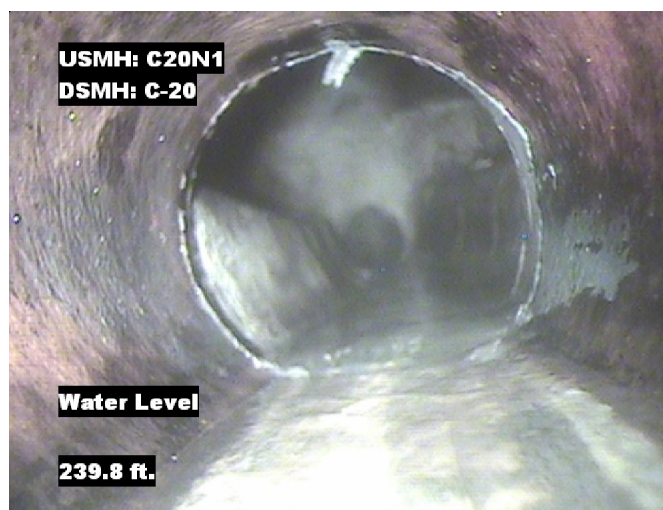
Pipe Segment Refere...	City	Street	Material	Location C...	Sewer Use
<b>C12-1A_C-20</b>	<b>Oliver Springs</b>	<b>Maple Ave</b>	<b>Concrete Pipe (non-...</b>	<b>Railway</b>	<b>Sanitary</b>
<b>Upstream MH</b>	Total Length	Year Laid	<b>Shape</b>	Location Details	
<b>C12-1A</b>	<b>243.5</b>		<b>Circular</b>	<b>Runs under RailRoad</b>	
<b>DS Manhole</b>	<b>Length surveyed</b>	Year Renewed	<b>Height</b>	Width	Pipe Joint...
<b>C-20</b>	<b>243.5</b>		<b>8</b>	<b>8</b>	<b>4</b>



Distance: 72.8 ft. Grade: 3  
Condition: Lining Failure Delaminating  
Remarks: N/A



Distance: 92.0 ft. Grade: 0  
Condition: Tap Factory Made  
Remarks: N/A



Distance: 239.8 ft. Grade: 0  
Condition: Water Level  
Remarks: N/A



Distance: 243.5 ft. Grade: 0  
Condition: Access Point Manhole  
Remarks: C12-1A





## PACP Conditions

Pipe Segment Refere... <b>C12-1A_C-20</b>	City <b>Oliver Springs</b>	Street <b>Maple Ave</b>	Material <b>Concrete Pipe (non-...</b>	Location C... <b>Railway</b>	Sewer Use <b>Sanitary</b>
Upstream MH <b>C12-1A</b>	Total Length <b>243.5</b>	Year Laid	Shape <b>Circular</b>	Location Details <b>Runs under RailRoad</b>	
DS Manhole <b>C-20</b>	Length surveyed <b>243.5</b>	Year Renewed	Height <b>8</b>	Width <b>8</b>	Pipe Joint... <b>4</b>
SPR <b>3</b>	MPR <b>8</b>	PO Number <b>4397-03</b>		Customer <b>GRW</b>	
SPRI <b>3</b>	MPRI <b>4</b>	Work Order <b>4397-02</b>		Purpose <b>Pre-Rehabilitation Survey</b>	
QSR <b>3100</b>	QMR <b>4200</b>	Direction <b>Upstream</b>		Date <b>20150716</b>	
OPR <b>11</b>	Surveyed By <b>Barry Rogers</b>	Pre-Cleaning <b>Jetting</b>		Time <b>15:08</b>	
OPRI <b>3.7</b>	Certificate Number <b>U-1012-16405</b>	Date Cleaned <b>20150716</b>		Weather <b>Dry</b>	
			End Time <b>15:18</b>		Additional Info

Normal Defects			Structural Ratings			O & M Ratings			Combined Ratings		
			Grade Rating	No. Occur.	Rating	Grade Rating	No. Occur.	Rating	Grade Rating	No. Occur.	Rating
Continuous Defects			1	0	0	1	0	0	1	0	0
			2	0	0	2	0	0	2	0	0
			3	1	3	3	0	0	3	1	3
			4	0	0	4	0	0	4	0	0
			5	0	0	5	0	0	5	0	0
Code	ID	Length	0	0	0	4	2	8	4	2	8
MCU	F01	11.8									
			Subtotals	1		Subtotals	2		Subtotals	3	
SUMMARY			Pipe Rating		3	Pipe Rating		8	Overall Pipe Rating		11
			Structural Index		3.0	O&M Index		4.0	Overall Index		3.7
			Str. Quick Rating		3100	O&M Quick Rating		4200	Ovrl. Quick Rating		4231