



## Defect Listing

Pipe Segment Refere... <b>C12-1_C12-1A</b>	City <b>Oliver Springs</b>	Street <b>hannah dr</b>	Material <b>Concrete Pipe (non-...</b>	Location C... <b>Easement/R...</b>	Sewer Use <b>Sanitary</b>
Upstream MH <b>C12-1</b>	Total Length <b>61.3</b>	Year Laid	Shape <b>Circular</b>	Location Details	
DS Manhole <b>C12-1A</b>	Length surveyed <b>61.3</b>	Year Renewed	Height <b>8</b>	Width <b>8</b>	Pipe Joint... <b>4</b>

SPR <b>N/A</b>	MPR <b>N/A</b>	PO Number <b>4397-03</b>		Customer <b>GRW</b>	
SPRI <b>N/A</b>	MPRI <b>N/A</b>	Work Order <b>4397-02</b>		Purpose <b>Pre-Rehabilitation Survey</b>	
QSR <b>N/A</b>	QMR <b>N/A</b>				
OPR <b>N/A</b>	Surveyed By <b>Barry Rogers</b>	Direction <b>Downstream</b>	Date <b>20150716</b>	Media label	
OPRI <b>N/A</b>	Certificate Number <b>U-1012-16405</b>	Pre-Cleaning <b>Jetting</b>	Time <b>14:34</b>	Weather <b>Dry</b>	
Date Cleaned <b>20150716</b>			End Time <b>14:48</b>	Additional Info	

Distance	Condition	Cont. Dfct.	Values			Joint	Clock Position		Grade
			1st	2nd	%		At/From	To	
0.0 ft.	Access Point Manhole				0	<input type="checkbox"/>			
Remarks: c12-1									
0.0 ft.	Water Level				5	<input type="checkbox"/>			
59.9 ft.	Tap Factory Made Active		8		0	<input type="checkbox"/>	6		
61.3 ft.	Water Level				5	<input type="checkbox"/>			
61.3 ft.	Access Point Manhole				0	<input type="checkbox"/>			
Remarks: C12-1A									

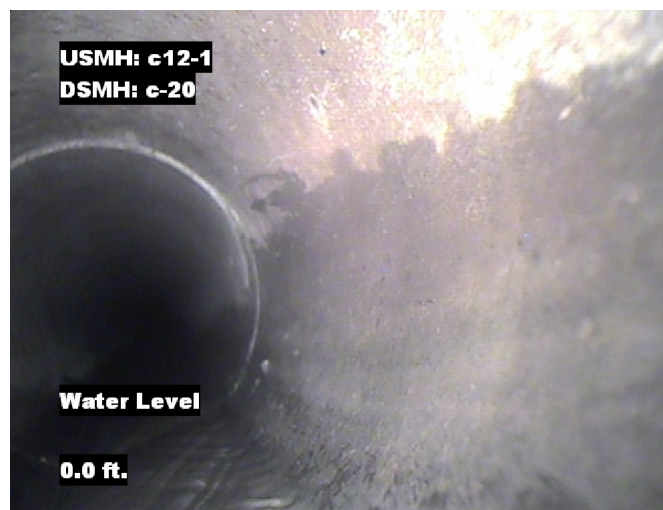


## Image Report 4/Page

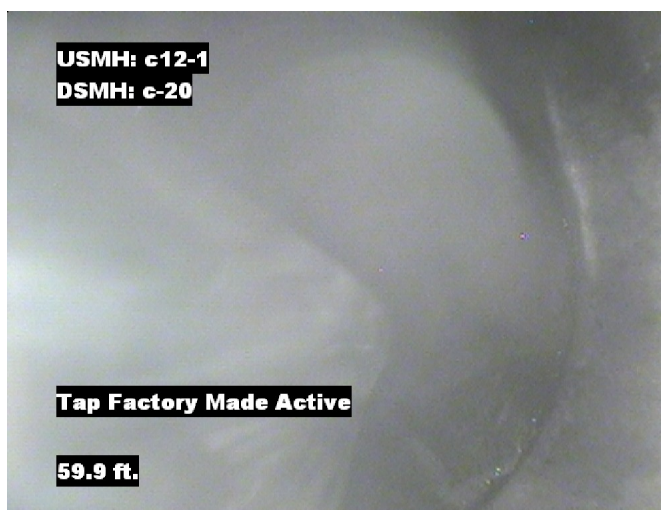
Pipe Segment Refere...	City	Street	Material	Location C...	Sewer Use
C12-1_C12-1A	Oliver Springs	hannah dr	Concrete Pipe (non-...	Easement/R...	Sanitary
Upstream MH C12-1	Total Length 61.3	Year Laid	Shape Circular	Location Details	
DS Manhole C12-1A	Length surveyed 61.3	Year Renewed	Height 8	Width 8	Pipe Joint... 4



Distance: 0.0 ft. Grade: 0  
Condition: Access Point Manhole  
Remarks: c12-1



Distance: 0.0 ft. Grade: 0  
Condition: Water Level  
Remarks: N/A



Distance: 59.9 ft. Grade: 0  
Condition: Tap Factory Made Active  
Remarks: N/A



Distance: 61.3 ft. Grade: 0  
Condition: Water Level  
Remarks: N/A



## Image Report 4/Page

Pipe Segment Refere...	City	Street	Material	Location C...	Sewer Use
<b>C12-1_C12-1A</b>	<b>Oliver Springs</b>	<b>hannah dr</b>	<b>Concrete Pipe (non-...</b>	<b>Easement/R...</b>	<b>Sanitary</b>
<b>Upstream MH</b> <b>C12-1</b>	Total Length <b>61.3</b>	Year Laid	<b>Shape</b> <b>Circular</b>	Location Details	
<b>DS Manhole</b> <b>C12-1A</b>	<b>Length surveyed</b> <b>61.3</b>	Year Renewed	<b>Height</b> <b>8</b>	Width <b>8</b>	Pipe Joint... <b>4</b>



Distance: 61.3 ft. Grade: 0  
Condition: Access Point Manhole  
Remarks: C12-1A



## PACP Conditions

Pipe Segment Refere...	City	Street	Material		Location C...	Sewer Use
C12-1_C12-1A	Oliver Springs	hannah dr	Concrete Pipe (non-...		Easement/R...	Sanitary
Upstream MH	Total Length	Year Laid	Shape		Location Details	
C12-1	61.3		Circular			
DS Manhole	Length surveyed	Year Renewed	Height	Width	Pipe Joint...	
C12-1A	61.3		8	8	4	

SPR	N/A	MPR	N/A	PO Number		Customer	
SPRI	N/A	MPRI	N/A	4397-03		GRW	
QSR	N/A	QMR	N/A	Work Order		Purpose	
				4397-02		Pre-Rehabilitation Survey	
OPR	N/A	Surveyed By Barry_Rogers		Direction Downstream	Date 20150716	Media label	
OPRI	N/A	Certificate Number U-1012-16405		Pre-Cleaning Jetting	Time 14:34	Weather Dry	
Date Cleaned 20150716					End Time 14:48	Additional Info	

[illegible]