



## Defect Listing

Pipe Segment Refere... <b>B4-2 B4-1</b>	City <b>Oliver Springs</b>	Street <b>Butler St</b>	Material <b>Concrete Pipe (non-...</b>	Location C... <b>Light High...</b>	Sewer Use <b>Sanitary</b>
Upstream MH <b>B4-2</b>	Total Length <b>343.1</b>	Year Laid	Shape <b>Circular</b>	Location Details	
DS Manhole <b>B4-1</b>	Length surveyed <b>343.1</b>	Year Renewed	Height <b>8</b>	Width <b>8</b>	Pipe Joint... <b>4</b>

SPR <b>7</b>	MPR <b>2</b>	PO Number <b>4397-03</b>	Customer <b>GRW</b>
SPRI <b>3.5</b>	MPRI <b>2</b>	Work Order <b>4397-02</b>	Purpose <b>Pre-Rehabilitation Survey</b>
QSR <b>5121</b>	QMR <b>2100</b>		
OPR <b>9</b>	Surveyed By <b>Charlie Gordon</b>	Direction <b>Downstream</b>	Date <b>20150904</b>
OPRI <b>3</b>	Certificate Number <b>U-615-07000491</b>	Pre-Cleaning <b>Jetting</b>	Time <b>12:06</b>
	Date Cleaned <b>20150904</b>	End Time <b>12:30</b>	Weather <b>Dry</b>
		Additional Info	

Distance	Condition	Cont. Dfct.	Values			Joint	Clock Position		Grade
			1st	2nd	%		At/From	To	
0.0 ft.	Access Point Manhole				0	<input type="checkbox"/>			
Remarks: B4-2									
0.0 ft.	Water Level				5	<input type="checkbox"/>			
16.6 ft.	Tap Factory Made		6		0	<input type="checkbox"/>	9		
83.3 ft.	Tap Factory Made		6		0	<input type="checkbox"/>	3		
100.9 ft.	Tap Factory Made		6		0	<input type="checkbox"/>	9		
209.3 ft.	Tap Factory Made		6		0	<input type="checkbox"/>	9		
233.2 ft.	Tap Factory Made		6		0	<input type="checkbox"/>	3		
282.4 ft.	Water Level Sag	S01			10	<input type="checkbox"/>			2
287.7 ft.	Water Level Sag	F01			10	<input type="checkbox"/>			2
302.4 ft.	Tap Factory Made		6		0	<input type="checkbox"/>	3		
331.9 ft.	Tap Factory Made		6		0	<input type="checkbox"/>	9		
338.9 ft.	Hole Soil Visible				0	<input type="checkbox"/>	9	2	5
338.9 ft.	Joint Offset Large				0	<input type="checkbox"/>			2
342.7 ft.	Water Level				5	<input type="checkbox"/>			
343.1 ft.	Access Point Manhole				0	<input type="checkbox"/>			
Remarks: B4-1									

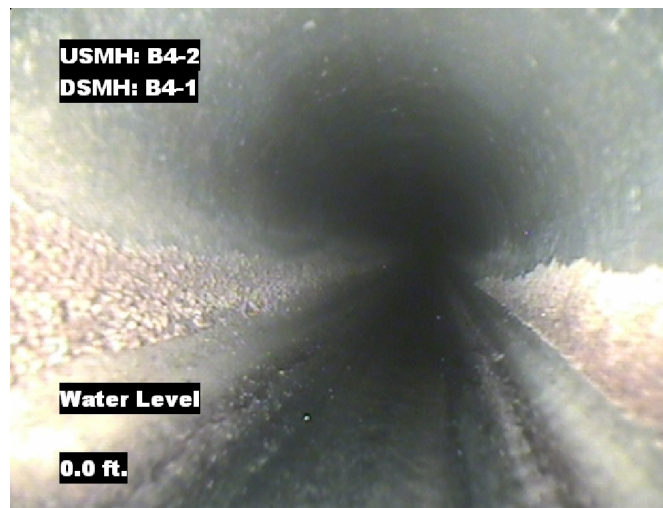


## Image Report 4/Page

Pipe Segment Refere...	City	Street	Material	Location C...	Sewer Use
B4-2 B4-1	Oliver Springs	Butler St	Concrete Pipe (non-...	Light High...	Sanitary
Upstream MH	Total Length	Year Laid	Shape	Location Details	
B4-2	343.1		Circular		
DS Manhole	Length surveyed	Year Renewed	Height	Width	Pipe Joint...
B4-1	343.1		8	8	4



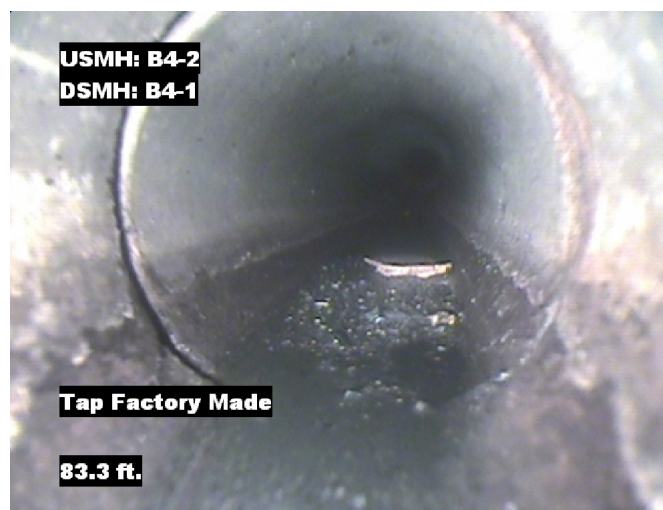
Distance: 0.0 ft. Grade: 0  
Condition: Access Point Manhole  
Remarks: B4-2



Distance: 0.0 ft. Grade: 0  
Condition: Water Level  
Remarks: N/A



Distance: 16.6 ft. Grade: 0  
Condition: Tap Factory Made  
Remarks: N/A

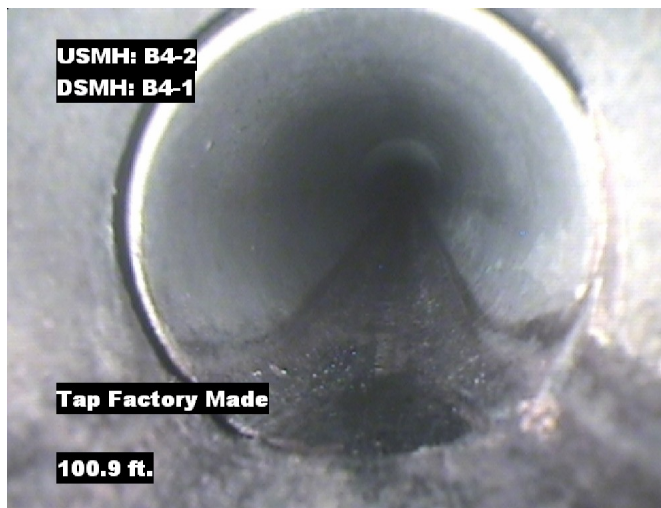


Distance: 83.3 ft. Grade: 0  
Condition: Tap Factory Made  
Remarks: N/A



## Image Report 4/Page

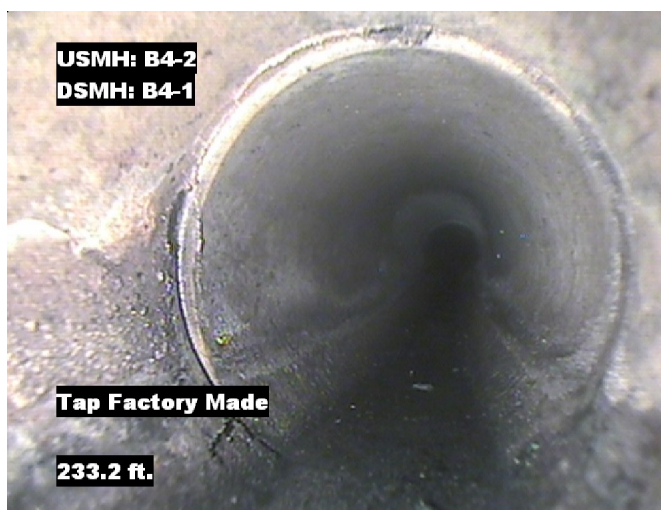
Pipe Segment Refere...	City	Street	Material	Location C...	Sewer Use
B4-2 B4-1	Oliver Springs	Butler St	Concrete Pipe (non-...	Light High...	Sanitary
Upstream MH	Total Length	Year Laid	Shape	Location Details	
B4-2	343.1		Circular		
DS Manhole	Length surveyed	Year Renewed	Height	Width	Pipe Joint...
B4-1	343.1		8	8	4



Distance: 100.9 ft. Grade: 0  
Condition: Tap Factory Made  
Remarks: N/A



Distance: 209.3 ft. Grade: 0  
Condition: Tap Factory Made  
Remarks: N/A



Distance: 233.2 ft. Grade: 0  
Condition: Tap Factory Made  
Remarks: N/A



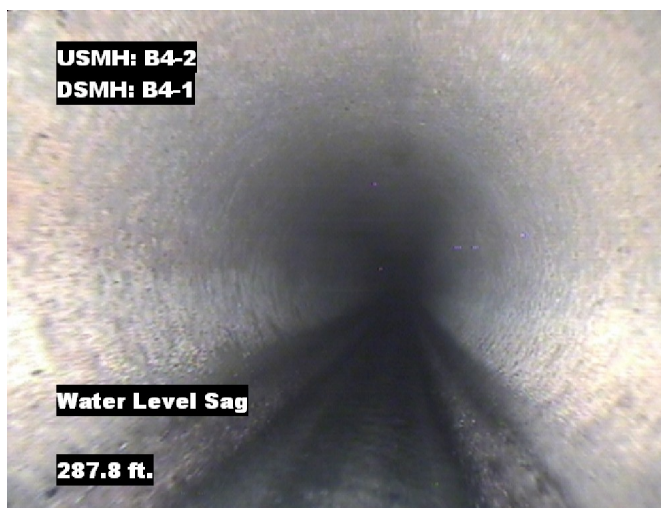
Distance: 282.4 ft. Grade: 2  
Condition: Water Level Sag  
Remarks: N/A



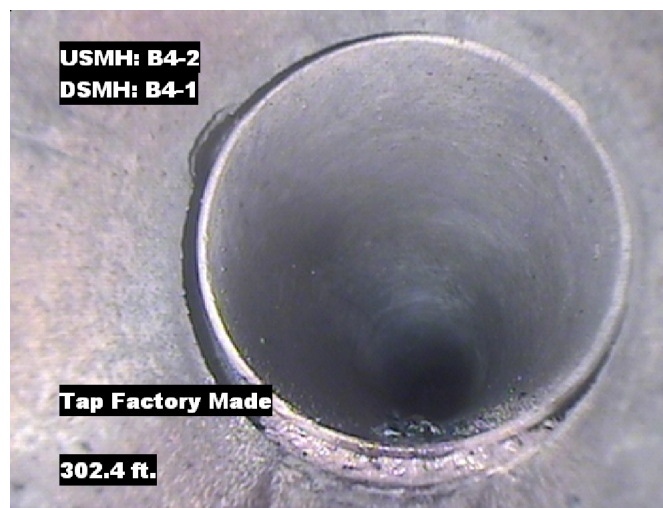


## Image Report 4/Page

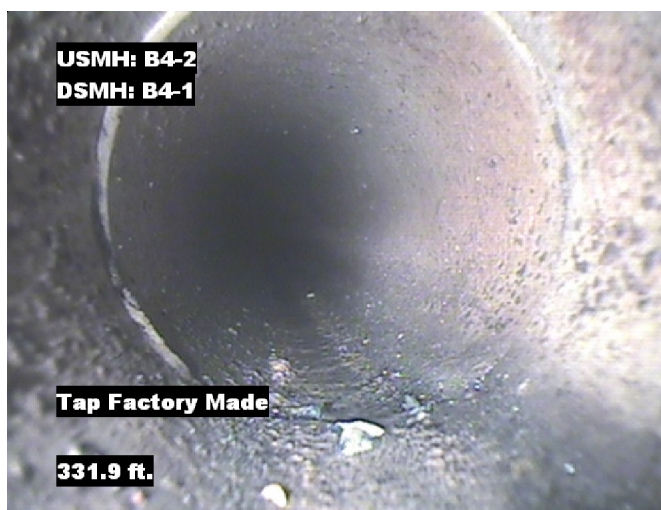
Pipe Segment Refere...	City	Street	Material	Location C...	Sewer Use
B4-2_B4-1	Oliver Springs	Butler St	Concrete Pipe (non-...	Light High...	Sanitary
Upstream MH	Total Length	Year Laid	Shape	Location Details	
B4-2	343.1		Circular		
DS Manhole	Length surveyed	Year Renewed	Height	Width	Pipe Joint...
B4-1	343.1		8	8	4



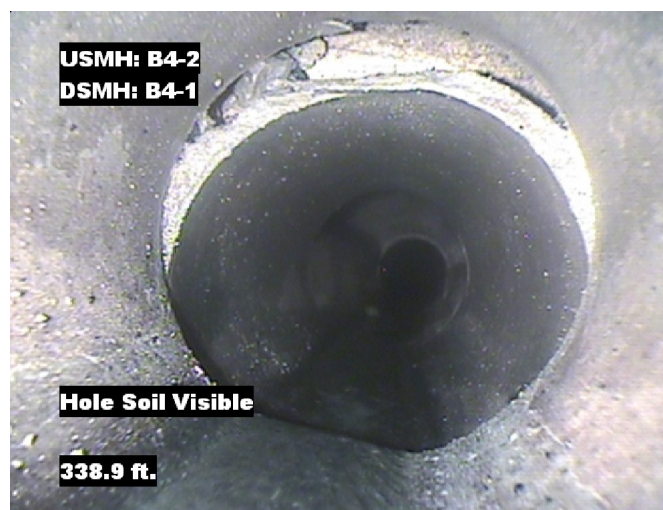
Distance: 287.7 ft. Grade: 2  
Condition: Water Level Sag  
Remarks: N/A



Distance: 302.4 ft. Grade: 0  
Condition: Tap Factory Made  
Remarks: N/A



Distance: 331.9 ft. Grade: 0  
Condition: Tap Factory Made  
Remarks: N/A

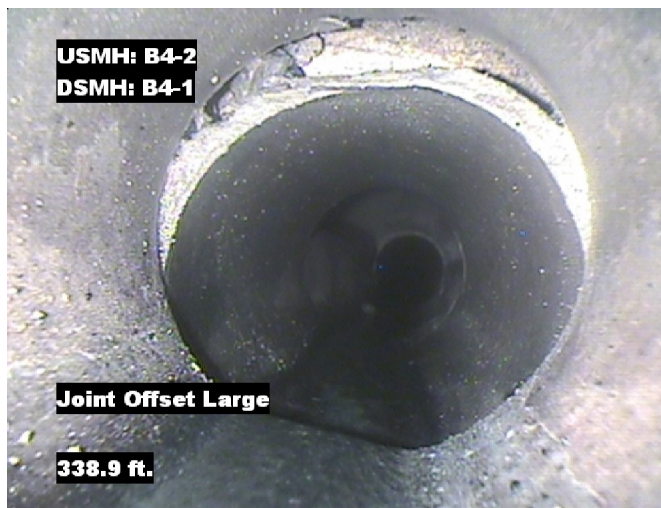


Distance: 338.9 ft. Grade: 5  
Condition: Hole Soil Visible  
Remarks: N/A

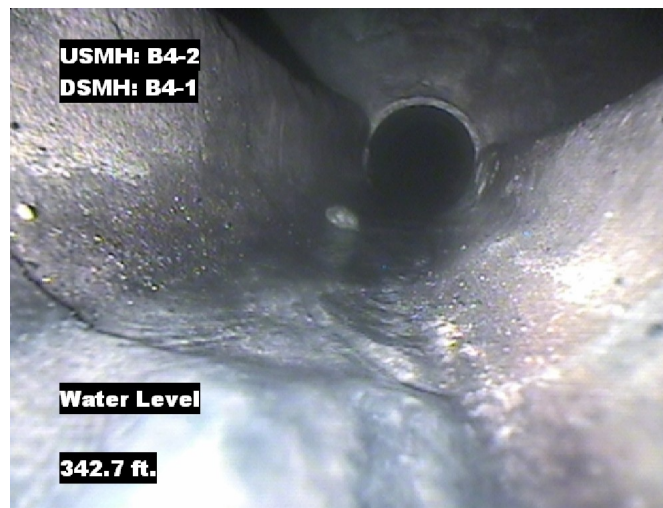


## Image Report 4/Page

Pipe Segment Refere...	City	Street	Material	Location C...	Sewer Use
<b>B4-2 B4-1</b>	<b>Oliver Springs</b>	<b>Butler St</b>	<b>Concrete Pipe (non-...</b>	<b>Light High...</b>	<b>Sanitary</b>
<b>Upstream MH</b>	Total Length	Year Laid	<b>Shape</b>	Location Details	
<b>B4-2</b>	<b>343.1</b>		<b>Circular</b>		
<b>DS Manhole</b>	Length surveyed	Year Renewed	<b>Height</b>	Width	Pipe Joint...
<b>B4-1</b>	<b>343.1</b>		<b>8</b>	<b>8</b>	<b>4</b>



Distance: 338.9 ft. Grade: 2  
Condition: Joint Offset Large  
Remarks: N/A



Distance: 342.7 ft. Grade: 0  
Condition: Water Level  
Remarks: N/A



Distance: 343.1 ft. Grade: 0  
Condition: Access Point Manhole  
Remarks: B4-1



## PACP Conditions

Pipe Segment Refere... <b>B4-2_B4-1</b>	City <b>Oliver Springs</b>	Street <b>Butler St</b>	Material <b>Concrete Pipe (non-...</b>	Location C... <b>Light High...</b>	Sewer Use <b>Sanitary</b>
Upstream MH <b>B4-2</b>	Total Length <b>343.1</b>	Year Laid	Shape <b>Circular</b>	Location Details	
DS Manhole <b>B4-1</b>	Length surveyed <b>343.1</b>	Year Renewed	Height <b>8</b>	Width <b>8</b>	Pipe Joint... <b>4</b>
SPR <b>7</b>	MPR <b>2</b>	PO Number <b>4397-03</b>		Customer <b>GRW</b>	
SPRI <b>3.5</b>	MPRI <b>2</b>	Work Order <b>4397-02</b>		Purpose <b>Pre-Rehabilitation Survey</b>	
QSR <b>5121</b>	QMR <b>2100</b>	Direction <b>Downstream</b>		Date <b>20150904</b>	
OPR <b>9</b>	Surveyed By <b>Charlie Gordon</b>	Pre-Cleaning <b>Jetting</b>		Media label	
OPRI <b>3</b>	Certificate Number <b>U-615-07000491</b>	Time <b>12:06</b>		Weather <b>Dry</b>	
Date Cleaned <b>20150904</b>			End Time <b>12:30</b>		Additional Info

Normal Defects			Structural Ratings			O & M Ratings			Combined Ratings		
			Grade Rating	No. Occur.	Rating	Grade Rating	No. Occur.	Rating	Grade Rating	No. Occur.	Rating
Continuous Defects			1	0	0	1	0	0	1	0	0
			2	1	2	2	0	0	2	1	2
			3	0	0	3	0	0	3	0	0
			4	0	0	4	0	0	4	0	0
			5	1	5	5	0	0	5	1	5
Code	ID	Length	0	0	0	2	1	2	2	1	2
MWLS	F01	5.3									
			Subtotals	2		Subtotals	1		Subtotals	3	
SUMMARY			Pipe Rating	7		Pipe Rating	2		Overall Pipe Rating	9	
			Structural Index	3.5		O&M Index	2.0		Overall Index	3.0	
			Str. Quick Rating	5121		O&M Quick Rating	2100		Ovrl. Quick Rating	5122	