



## Defect Listing

Pipe Segment Refere... <b>B-10_B-9</b>	City <b>Oliver Sprtngs</b>	Street <b>Cemetery Rd</b>	Material <b>Fibreglass Reinforc...</b>	Location C... <b>Easement/R...</b>	Sewer Use <b>Sanitary</b>
Upstream MH <b>B-10</b>	Total Length <b>257.1</b>	Year Laid	Shape <b>Circular</b>	Location Details	
DS Manhole <b>B-9</b>	Length surveyed <b>257.1</b>	Year Renewed	Height <b>8</b>	Width <b>8</b>	Pipe Joint... <b>N/A</b>

SPR <b>N/A</b>	MPR <b>6</b>	PO Number <b>4397-03</b>	Customer <b>GRW</b>
SPRI <b>N/A</b>	MPRI <b>2</b>	Work Order <b>4397-02</b>	Purpose <b>Pre-Rehabilitation Survey</b>
QSR <b>N/A</b>	QMR <b>2300</b>		
OPR <b>6</b>	Surveyed By <b>Charlie Gordon</b>	Direction <b>Downstream</b>	Date <b>20150914</b>
OPRI <b>2</b>	Certificate Number <b>U-615-07000491</b>	Pre-Cleaning <b>Jetting</b>	Time <b>11:19</b>
	Date Cleaned <b>20150914</b>	End Time <b>11:29</b>	Weather <b>Damp</b>
			Media label
			Additional Info

Distance	Condition	Cont. Dfct.	Values			Joint	Clock Position		Grade
			1st	2nd	%		At/From	To	
0.0 ft.	Access Point Manhole				0	<input type="checkbox"/>			
Remarks: B-10									
0.0 ft.	Water Level				20	<input type="checkbox"/>			
12.3 ft.	Water Level				5	<input type="checkbox"/>			
69.8 ft.	Water Level Sag	S01			15	<input type="checkbox"/>			2
84.6 ft.	Water Level Sag	F01			15	<input type="checkbox"/>			2
99.8 ft.	Water Level				5	<input type="checkbox"/>			
255.8 ft.	Water Level				10	<input type="checkbox"/>			
257.1 ft.	Access Point Manhole				0	<input type="checkbox"/>			
Remarks: B-9									

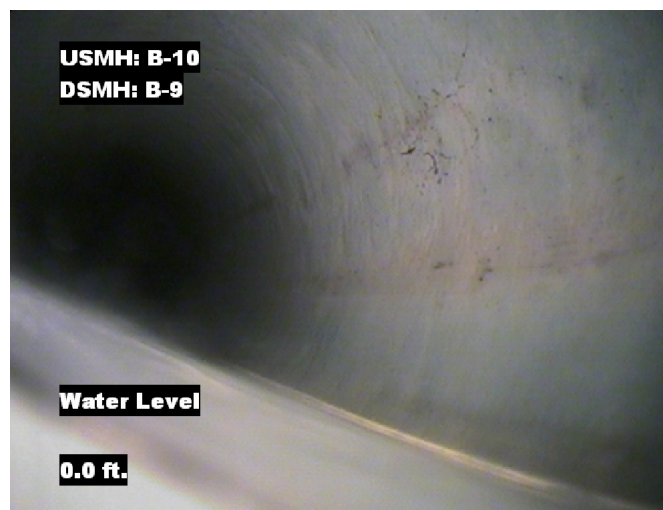


## Image Report 4/Page

Pipe Segment Refere...	City	Street	Material	Location C...	Sewer Use
<b>B-10_B-9</b>	<b>Oliver Sprtngs</b>	<b>Cemetery Rd</b>	<b>Fibreglass Reinforc...</b>	<b>Easement/R...</b>	<b>Sanitary</b>
<b>Upstream MH</b>	Total Length	Year Laid	<b>Shape</b>	Location Details	
<b>B-10</b>	<b>257.1</b>		<b>Circular</b>		
<b>DS Manhole</b>	<b>Length surveyed</b>	Year Renewed	<b>Height</b>	Width	Pipe Joint...
<b>B-9</b>	<b>257.1</b>		<b>8</b>	<b>8</b>	<b>N/A</b>



Distance: 0.0 ft. Grade: 0  
Condition: Access Point Manhole  
Remarks: B-10



Distance: 0.0 ft. Grade: 0  
Condition: Water Level  
Remarks: N/A



Distance: 12.3 ft. Grade: 0  
Condition: Water Level  
Remarks: N/A



Distance: 69.8 ft. Grade: 2  
Condition: Water Level Sag  
Remarks: N/A



## Image Report 4/Page

Pipe Segment Refere...	City	Street	Material	Location C...	Sewer Use
B-10_B-9	Oliver Sprtings	Cemetery Rd	Fibreglass Reinforc...	Easement/R...	Sanitary
Upstream MH B-10	Total Length 257.1	Year Laid	Shape Circular	Location Details	
DS Manhole B-9	Length surveyed 257.1	Year Renewed	Height 8	Width 8	Pipe Joint... N/A



Distance: 84.6 ft. Grade: 2  
Condition: Water Level Sag  
Remarks: N/A



Distance: 99.8 ft. Grade: 0  
Condition: Water Level  
Remarks: N/A



Distance: 255.8 ft. Grade: 0  
Condition: Water Level  
Remarks: N/A



Distance: 257.1 ft. Grade: 0  
Condition: Access Point Manhole  
Remarks: B-9



## PACP Conditions

Pipe Segment Refere... <b>B-10_B-9</b>	City <b>Oliver Sprtngs</b>	Street <b>Cemetery Rd</b>	Material <b>Fibreglass Reinforc...</b>	Location C... <b>Easement/R...</b>	Sewer Use <b>Sanitary</b>
Upstream MH <b>B-10</b>	Total Length <b>257.1</b>	Year Laid	Shape <b>Circular</b>	Location Details	
DS Manhole <b>B-9</b>	Length surveyed <b>257.1</b>	Year Renewed	Height <b>8</b>	Width <b>8</b>	Pipe Joint... <b>N/A</b>
SPR <b>N/A</b>	MPR <b>6</b>	PO Number <b>4397-03</b>		Customer <b>GRW</b>	
SPRI <b>N/A</b>	MPRI <b>2</b>	Work Order <b>4397-02</b>		Purpose <b>Pre-Rehabilitation Survey</b>	
QSR <b>N/A</b>	QMR <b>2300</b>				
OPR <b>6</b>	Surveyed By <b>Charlie Gordon</b>	Direction <b>Downstream</b>	Date <b>20150914</b>	Media label	
OPRI <b>2</b>	Certificate Number <b>U-615-07000491</b>	Pre-Cleaning <b>Jetting</b>	Time <b>11:19</b>	Weather <b>Damp</b>	
Date Cleaned <b>20150914</b>			End Time <b>11:29</b>	Additional Info	

Normal Defects			Structural Ratings			O & M Ratings			Combined Ratings		
			Grade Rating	No. Occur.	Rating	Grade Rating	No. Occur.	Rating	Grade Rating	No. Occur.	Rating
Continuous Defects			1	0	0	1	0	0	1	0	0
			2	0	0	2	0	0	2	0	0
			3	0	0	3	0	0	3	0	0
			4	0	0	4	0	0	4	0	0
			5	0	0	5	0	0	5	0	0
Code	ID	Length	0	0	0	2	3	6	2	3	6
MWLS	F01	14.8									
			Subtotals	0		Subtotals	3		Subtotals	3	
SUMMARY			Pipe Rating		0	Pipe Rating		6	Overall Pipe Rating		6
			Structural Index		0	O&M Index		2.0	Overall Index		2.0
			Str. Quick Rating		0000	O&M Quick Rating		2300	Ovrl. Quick Rating		2300