



## Defect Listing

Pipe Segment Refere...	City	Street	Material	Location C...	Sewer Use
<b>A9-1_A8-2</b>	<b>Oliver Springs</b>	<b>Central Ave</b>	<b>Concrete Pipe (non-...</b>	<b>Light High...</b>	<b>Sanitary</b>
Upstream MH	Total Length	Year Laid	Shape	Location Details	
<b>A9-1</b>	<b>207.1</b>		<b>Circular</b>		
DS Manhole	Length surveyed	Year Renewed	Height	Width	Pipe Joint...
<b>A8-2</b>	<b>207.1</b>		<b>8</b>	<b>8</b>	<b>4</b>

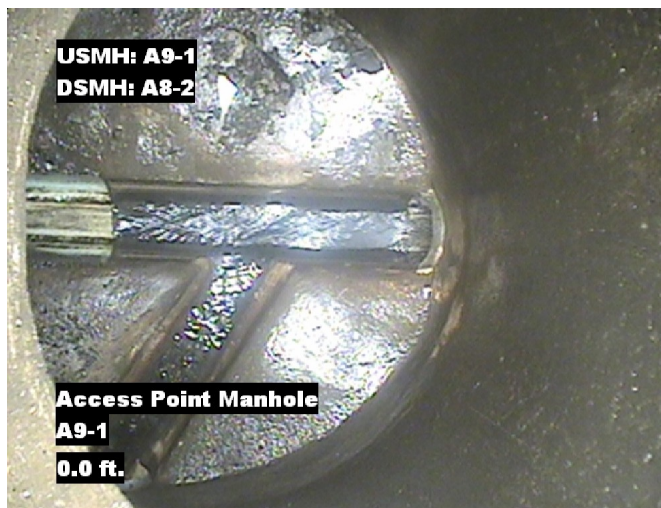
SPR	<b>N/A</b>	MPR	<b>6</b>	PO Number	Customer
SPRI	<b>N/A</b>	MPRI	<b>2</b>	<b>4397-03</b>	<b>GRW</b>
QSR	<b>N/A</b>	QMR	<b>2300</b>	Work Order	Purpose
				<b>4397-02</b>	<b>Pre-Rehabilitation Survey</b>
OPR	Surveyed By	Direction	Date	Media label	
<b>6</b>	<b>Charlie Gordon</b>	<b>Downstream</b>	<b>20150818</b>		
OPRI	Certificate Number	Pre-Cleaning	Time	Weather	
<b>2</b>	<b>U-615-07000491</b>	<b>Jetting</b>	<b>06:59</b>	<b>Damp</b>	
Date Cleaned			End Time	Additional Info	
<b>20150818</b>			<b>07:10</b>		

Distance	Condition	Cont. Dfct.	Values			Joint	Clock Position		Grade
			1st	2nd	%		At/From	To	
0.0 ft.	Access Point Manhole				0	<input type="checkbox"/>			
Remarks: A9-1									
0.0 ft.	Water Level				5	<input type="checkbox"/>			
8.6 ft.	Water Level Sag				15	<input type="checkbox"/>			2
122.6 ft.	Tap Factory Made		6		0	<input type="checkbox"/>	9		
144.9 ft.	Water Level Sag				15	<input type="checkbox"/>			2
157.1 ft.	Water Level Sag				20	<input type="checkbox"/>			2
206.8 ft.	Water Level				5	<input type="checkbox"/>			
207.1 ft.	Access Point Manhole				0	<input type="checkbox"/>			
Remarks: A8-2									

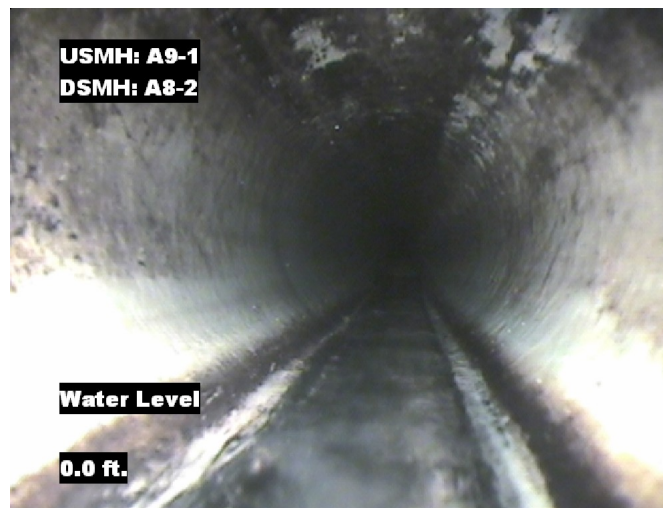


## Image Report 4/Page

Pipe Segment Refere...	City	Street	Material	Location C...	Sewer Use
A9-1_A8-2	Oliver Springs	Central Ave	Concrete Pipe (non-...	Light High...	Sanitary
Upstream MH	Total Length	Year Laid	Shape	Location Details	
A9-1	207.1		Circular		
DS Manhole	Length surveyed	Year Renewed	Height	Width	Pipe Joint...
A8-2	207.1		8	8	4



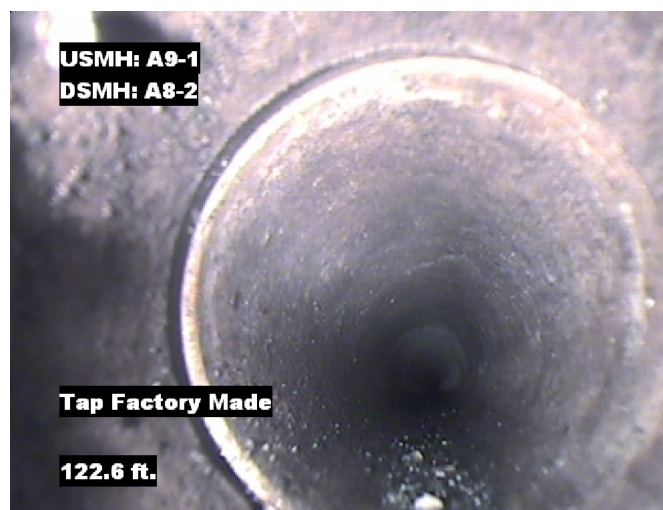
Distance: 0.0 ft. Grade: 0  
Condition: Access Point Manhole  
Remarks: A9-1



Distance: 0.0 ft. Grade: 0  
Condition: Water Level  
Remarks: N/A



Distance: 8.6 ft. Grade: 2  
Condition: Water Level Sag  
Remarks: N/A

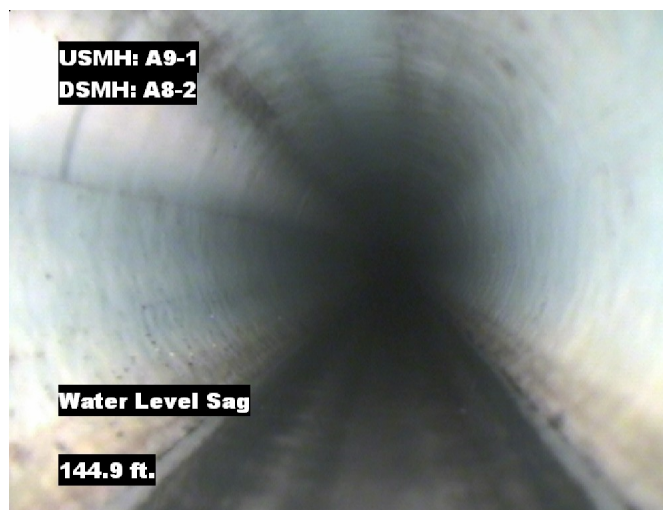


Distance: 122.6 ft. Grade: 0  
Condition: Tap Factory Made  
Remarks: N/A



## Image Report 4/Page

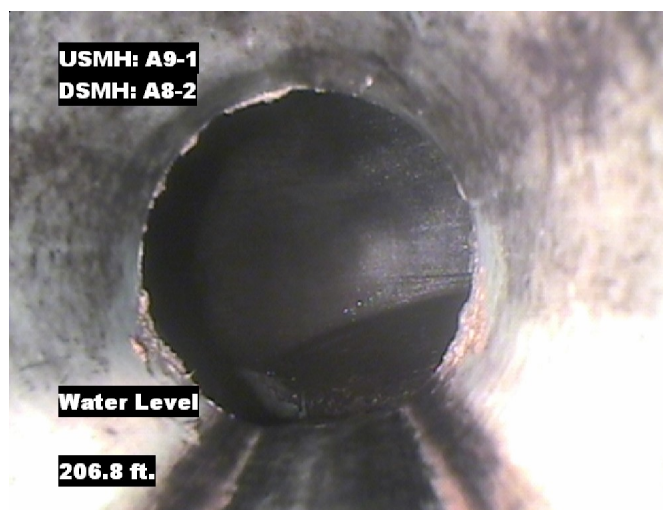
Pipe Segment Refere...	City	Street	Material	Location C...	Sewer Use
A9-1_A8-2	Oliver Springs	Central Ave	Concrete Pipe (non-...	Light High...	Sanitary
Upstream MH	Total Length	Year Laid	Shape	Location Details	
A9-1	207.1		Circular		
DS Manhole	Length surveyed	Year Renewed	Height	Width	Pipe Joint...
A8-2	207.1		8	8	4



Distance: 144.9 ft. Grade: 2  
Condition: Water Level Sag  
Remarks: N/A



Distance: 157.1 ft. Grade: 2  
Condition: Water Level Sag  
Remarks: N/A



Distance: 206.8 ft. Grade: 0  
Condition: Water Level  
Remarks: N/A



Distance: 207.1 ft. Grade: 0  
Condition: Access Point Manhole  
Remarks: A8-2



## PACP Conditions

Pipe Segment Refere... <b>A9-1_A8-2</b>	City <b>Oliver Springs</b>	Street <b>Central Ave</b>	Material <b>Concrete Pipe (non-...</b>	Location C... <b>Light High...</b>	Sewer Use <b>Sanitary</b>
Upstream MH <b>A9-1</b>	Total Length <b>207.1</b>	Year Laid	Shape <b>Circular</b>	Location Details	
DS Manhole <b>A8-2</b>	Length surveyed <b>207.1</b>	Year Renewed	Height <b>8</b>	Width <b>8</b>	Pipe Joint... <b>4</b>
SPR <b>N/A</b>	MPR <b>6</b>	PO Number <b>4397-03</b>		Customer <b>GRW</b>	
SPRI <b>N/A</b>	MPRI <b>2</b>	Work Order <b>4397-02</b>		Purpose <b>Pre-Rehabilitation Survey</b>	
QSR <b>N/A</b>	QMR <b>2300</b>				
OPR <b>6</b>	Surveyed By <b>Charlie Gordon</b>	Direction <b>Downstream</b>	Date <b>20150818</b>	Media label	
OPRI <b>2</b>	Certificate Number <b>U-615-07000491</b>	Pre-Cleaning <b>Jetting</b>	Time <b>06:59</b>	Weather <b>Damp</b>	
Date Cleaned <b>20150818</b>			End Time <b>07:10</b>	Additional Info	

			Structural Ratings			O & M Ratings			Combined Ratings		
			Grade Rating	No. Occur.	Rating	Grade Rating	No. Occur.	Rating	Grade Rating	No. Occur.	Rating
Normal Defects											
			1	0	0	1	0	0	1	0	0
			2	0	0	2	3	6	2	3	6
			3	0	0	3	0	0	3	0	0
			4	0	0	4	0	0	4	0	0
			5	0	0	5	0	0	5	0	0
Continuous Defects											
Code	ID	Length									