



## Defect Listing

Pipe Segment Refere... <b>A7-6_A7-5</b>	City <b>Oliver Springs</b>	Street <b>Lookout Ave</b>	Material <b>PolyVinyl Chloride</b>	Location C... <b>Easement/R...</b>	Sewer Use <b>Sanitary</b>
Upstream MH <b>A7-6</b>	Total Length <b>187</b>	Year Laid	Shape <b>Circular</b>	Location Details	
DS Manhole <b>A7-5</b>	Length surveyed <b>187</b>	Year Renewed	Height <b>8</b>	Width <b>8</b>	Pipe Joint... <b>13</b>

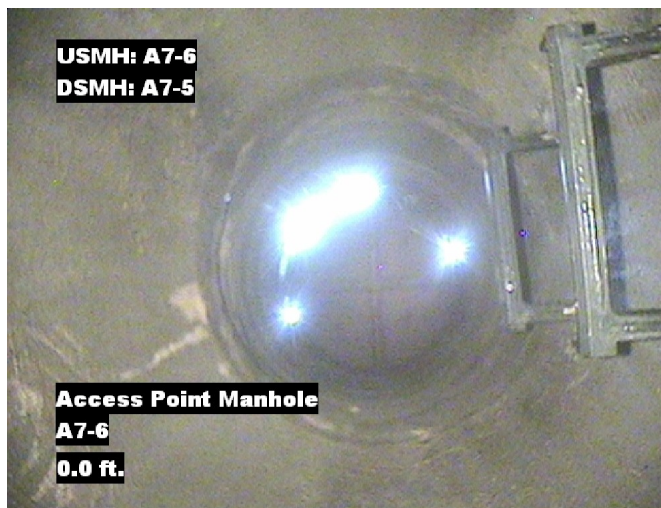
SPR <b>5</b>	MPR <b>12</b>	PO Number <b>4397-03</b>	Customer <b>GRW</b>
SPRI <b>2.5</b>	MPRI <b>2.4</b>	Work Order <b>4397-02</b>	Purpose <b>Pre-Rehabilitation Survey</b>
QSR <b>3121</b>	QMR <b>4124</b>		
OPR <b>17</b>	Surveyed By <b>Barry Rogers</b>	Direction <b>Downstream</b>	Date <b>20150806</b>
OPRI <b>2.4</b>	Certificate Number <b>U-1012-16405</b>	Pre-Cleaning <b>Jetting</b>	Time <b>08:38</b>
	Date Cleaned <b>20150806</b>	End Time <b>08:53</b>	Weather <b>Damp</b>
			Media label
			Additional Info

Distance	Condition	Cont. Dfct.	Values			Joint	Clock Position		Grade
			1st	2nd	%		At/From	To	
0.0 ft.	Access Point Manhole				0	<input type="checkbox"/>			
Remarks: A7-6									
0.0 ft.	Water Level				5	<input type="checkbox"/>			
7.3 ft.	Water Level Sag				10	<input type="checkbox"/>			2
40.0 ft.	Water Level Sag				30	<input type="checkbox"/>			2
100.1 ft.	Water Level Sag				20	<input type="checkbox"/>			2
124.0 ft.	Tap Factory Made		4		0	<input type="checkbox"/>	3		
135.7 ft.	Lining Failure Buckled					<input type="checkbox"/>	2	5	3
176.7 ft.	Water Level Sag				25	<input type="checkbox"/>			2
181.7 ft.	Crack Longitudinal				0	<input type="checkbox"/>	12		2
181.7 ft.	Infiltration Runner				0	<input type="checkbox"/>	12		4
186.4 ft.	Water Level				5	<input type="checkbox"/>			
187.0 ft.	Access Point Manhole				0	<input type="checkbox"/>			
Remarks: A7-5									

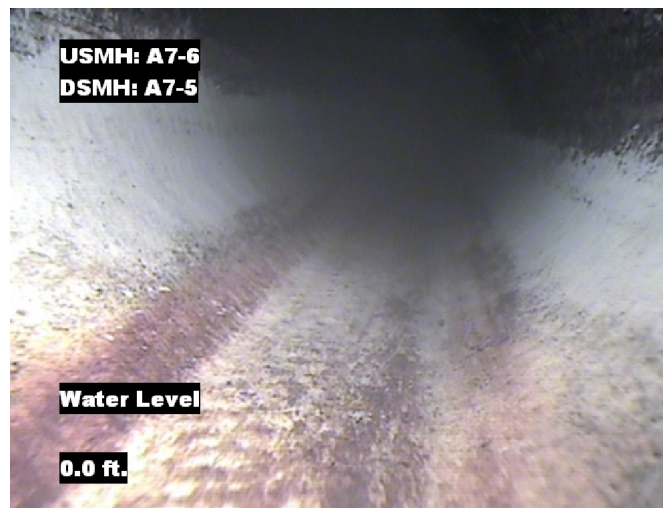


## Image Report 4/Page

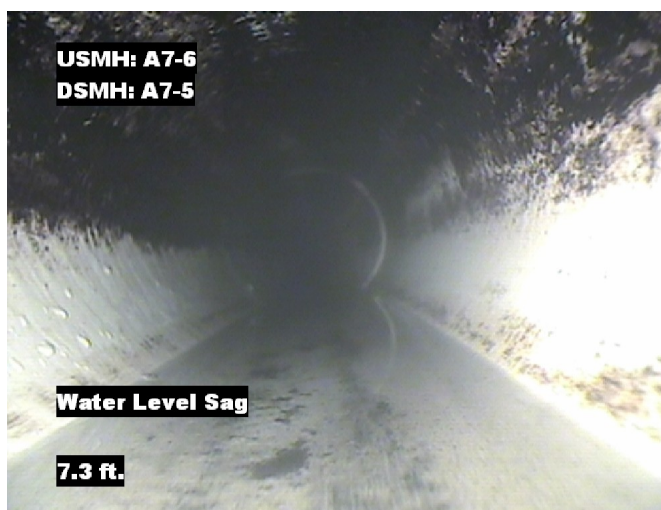
Pipe Segment Refere... <b>A7-6_A7-5</b>	<b>City</b> <b>Oliver Springs</b>	<b>Street</b> <b>Lookout Ave</b>	<b>Material</b> <b>PolyVinyl Chloride</b>		<b>Location C...</b> <b>Easement/R...</b>	<b>Sewer Use</b> <b>Sanitary</b>
<b>Upstream MH</b> <b>A7-6</b>	Total Length <b>187</b>	Year Laid	<b>Shape</b> <b>Circular</b>		Location Details	
<b>DS Manhole</b> <b>A7-5</b>	<b>Length surveyed</b> <b>187</b>	Year Renewed	<b>Height</b> <b>8</b>	Width <b>8</b>	Pipe Joint...	<b>13</b>



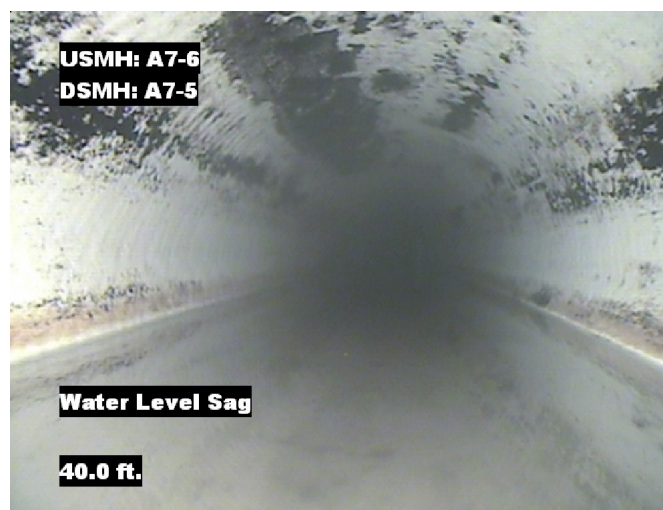
Distance: 0.0 ft. Grade: 0  
Condition: Access Point Manhole  
Remarks: A7-6



Distance: 0.0 ft. Grade: 0  
Condition: Water Level  
Remarks: N/A



Distance: 7.3 ft. Grade: 2  
Condition: Water Level Sag  
Remarks: N/A



Distance: 40.0 ft. Grade: 2  
Condition: Water Level Sag  
Remarks: N/A

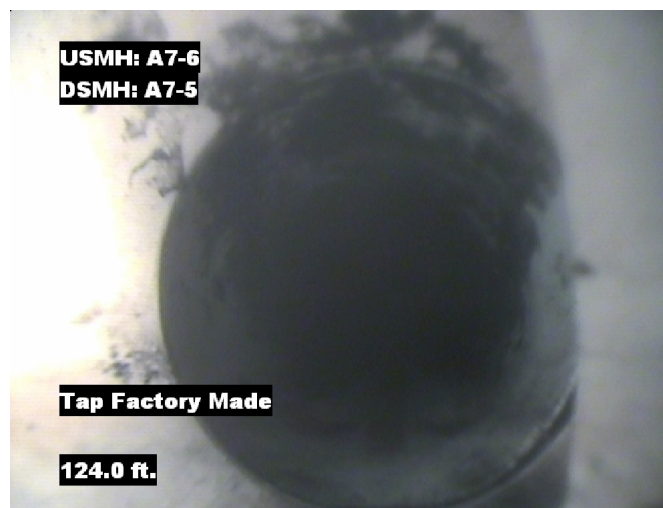


## Image Report 4/Page

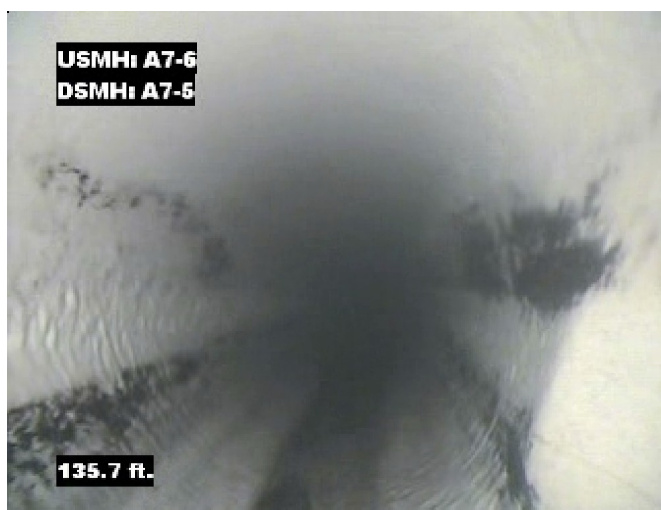
Pipe Segment Refere...	City	Street	Material	Location C...	Sewer Use
A7-6_A7-5	Oliver Springs	Lookout Ave	PolyVinyl Chloride	Easement/R...	Sanitary
Upstream MH	Total Length	Year Laid	Shape	Location Details	
A7-6	187		Circular		
DS Manhole	Length surveyed	Year Renewed	Height	Width	Pipe Joint...
A7-5	187		8	8	13



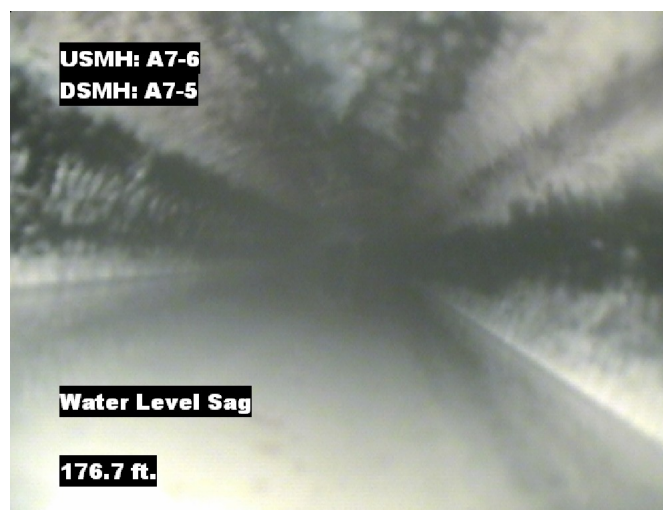
Distance: 100.1 ft. Grade: 2  
Condition: Water Level Sag  
Remarks: N/A



Distance: 124.0 ft. Grade: 0  
Condition: Tap Factory Made  
Remarks: N/A



Distance: 135.7 ft. Grade: 3  
Condition: Lining Failure Buckled  
Remarks: N/A



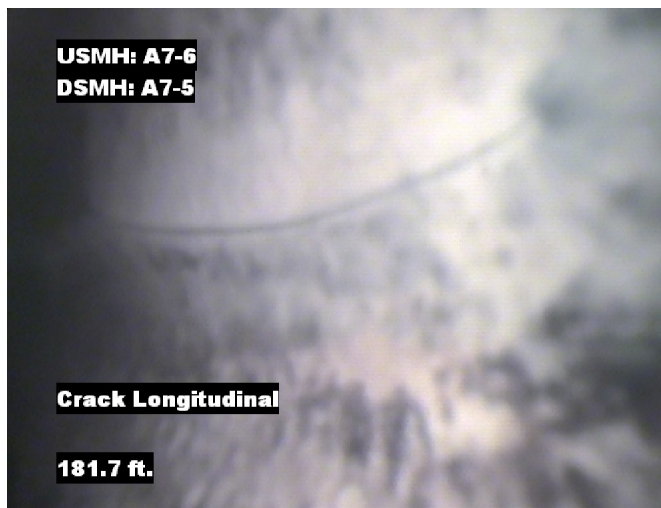
Distance: 176.7 ft. Grade: 2  
Condition: Water Level Sag  
Remarks: N/A





## Image Report 4/Page

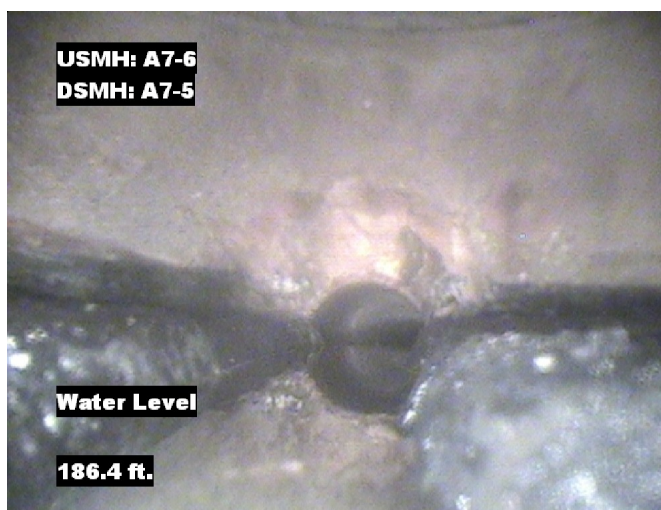
Pipe Segment Refere... <b>A7-6_A7-5</b>	<b>City</b> <b>Oliver Springs</b>	<b>Street</b> <b>Lookout Ave</b>	<b>Material</b> <b>PolyVinyl Chloride</b>		<b>Location C...</b> <b>Easement/R...</b>	<b>Sewer Use</b> <b>Sanitary</b>
<b>Upstream MH</b> <b>A7-6</b>	Total Length <b>187</b>	Year Laid	<b>Shape</b> <b>Circular</b>		Location Details	
<b>DS Manhole</b> <b>A7-5</b>	<b>Length surveyed</b> <b>187</b>	Year Renewed	<b>Height</b> <b>8</b>	Width <b>8</b>	Pipe Joint...	<b>13</b>



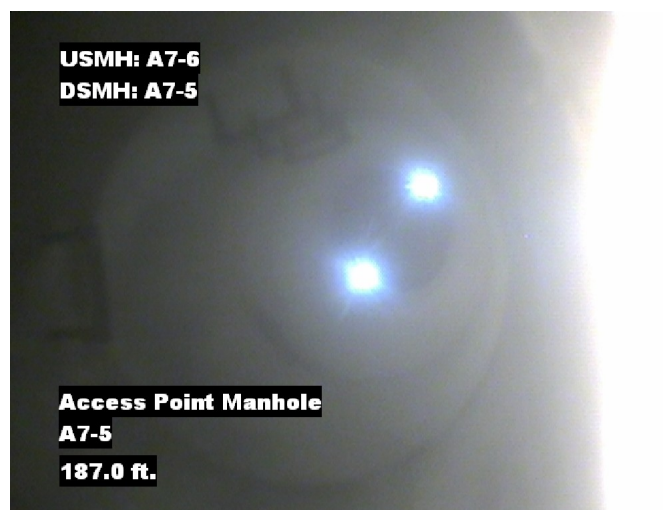
Distance: 181.7 ft. Grade: 2  
Condition: Crack Longitudinal  
Remarks: N/A



Distance: 181.7 ft. Grade: 4  
Condition: Infiltration Runner  
Remarks: N/A



Distance: 186.4 ft. Grade: 0  
Condition: Water Level  
Remarks: N/A



Distance: 187.0 ft. Grade: 0  
Condition: Access Point Manhole  
Remarks: A7-5



## PACP Conditions

Pipe Segment Refere... <b>A7-6_A7-5</b>	City <b>Oliver Springs</b>	Street <b>Lookout Ave</b>	Material <b>PolyVinyl Chloride</b>	Location C... <b>Easement/R...</b>	Sewer Use <b>Sanitary</b>
Upstream MH <b>A7-6</b>	Total Length <b>187</b>	Year Laid	Shape <b>Circular</b>	Location Details	
DS Manhole <b>A7-5</b>	Length surveyed <b>187</b>	Year Renewed	Height <b>8</b>	Width <b>8</b>	Pipe Joint... <b>13</b>
SPR <b>5</b>	MPR <b>12</b>	PO Number <b>4397-03</b>		Customer <b>GRW</b>	
SPRI <b>2.5</b>	MPRI <b>2.4</b>	Work Order <b>4397-02</b>		Purpose <b>Pre-Rehabilitation Survey</b>	
QSR <b>3121</b>	QMR <b>4124</b>				
OPR <b>17</b>	Surveyed By <b>Barry Rogers</b>	Direction <b>Downstream</b>	Date <b>20150806</b>	Media label	
OPRI <b>2.4</b>	Certificate Number <b>U-1012-16405</b>	Pre-Cleaning <b>Jetting</b>	Time <b>08:38</b>	Weather <b>Damp</b>	
Date Cleaned <b>20150806</b>			End Time <b>08:53</b>	Additional Info	

Normal Defects			Structural Ratings			O & M Ratings			Combined Ratings		
			Grade Rating	No. Occur.	Rating	Grade Rating	No. Occur.	Rating	Grade Rating	No. Occur.	Rating
Continuous Defects			1	0	0	1	0	0	1	0	0
			2	1	2	2	4	8	2	5	10
			3	1	3	3	0	0	3	1	3
			4	0	0	4	1	4	4	1	4
			5	0	0	5	0	0	5	0	0
Code	ID	Length									