



Defect Listing

Pipe Segment Refere... A7-4_A7-3	City Oliver Springs	Street highway 62	Material Vitrified Clay Pipe	Location C... Easement/R...	Sewer Use Sanitary
Upstream MH A7-4	Total Length	Year Laid	Shape Circular	Location Details	
DS Manhole A7-3	Length surveyed 100.2	Year Renewed	Height 8	Width 8	Pipe Joint... 13

SPR N/A	MPR 12	PO Number 4397-03	Customer GRW
SPRI N/A	MPRI 2	Work Order	Purpose
QSR N/A	QMR 2600	4397-02	Pre-Rehabilitation Survey
OPR 12	Surveyed By Charlie Gordon	Direction Upstream	Date 20150831
OPRI 2	Certificate Number U-615-07000491	Pre-Cleaning Jetting	Time 08:13
Date Cleaned 20150831		End Time 08:32	Weather Dry
Additional Info UPSTREAM MANHOLE A7...			

Distance	Condition	Cont. Dfct.	Values			Joint	Clock Position		Grade
			1st	2nd	%		At/From	To	
0.0 ft.	Access Point Manhole				0	<input type="checkbox"/>			
Remarks: A7-3									
0.0 ft.	Water Level				10	<input type="checkbox"/>			
6.0 ft.	Water Level Sag	S01			15	<input type="checkbox"/>			2
14.0 ft.	Water Level Sag	F01			15	<input type="checkbox"/>			2
32.5 ft.	Water Level Sag	S02			15	<input type="checkbox"/>			2
41.9 ft.	Water Level Sag	F02			15	<input type="checkbox"/>			2
68.3 ft.	Water Level Sag				10	<input type="checkbox"/>			2
88.6 ft.	Water Level Sag				10	<input type="checkbox"/>			2
100.2 ft.	Water Level				10	<input type="checkbox"/>			
100.2 ft.	Access Point End of Pipe				0	<input type="checkbox"/>			
100.2 ft.	Tap Factory Made Active		8		0	<input type="checkbox"/>	3		
Remarks: MAIN LINE COMES IN END OF LINE									

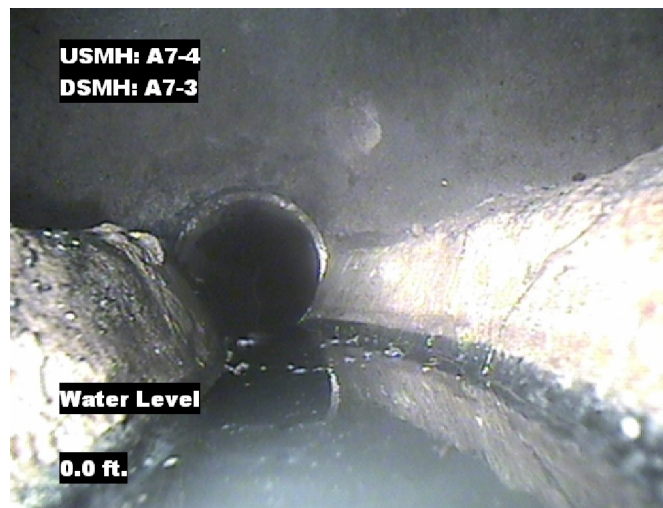


Image Report 4/Page

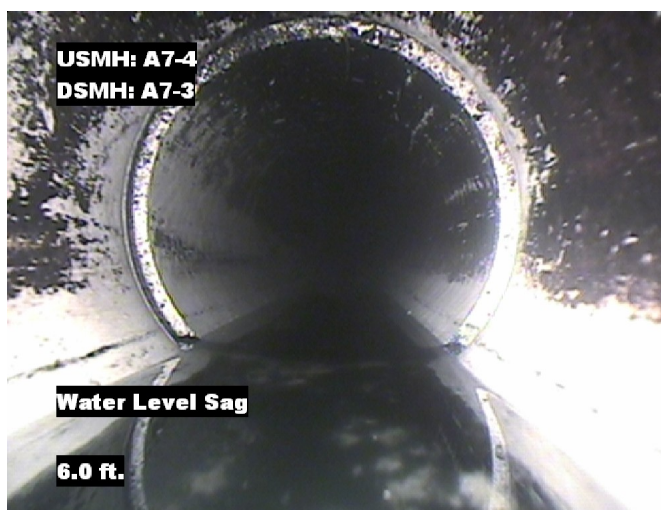
Pipe Segment Refere... A7-4_A7-3	City Oliver Springs	Street highway 62	Material Vitrified Clay Pipe		Location C... Easement/R...	Sewer Use Sanitary
Upstream MH A7-4	Total Length	Year Laid	Shape Circular		Location Details	
DS Manhole A7-3	Length surveyed 100.2	Year Renewed	Height 8	Width 8	Pipe Joint...	13



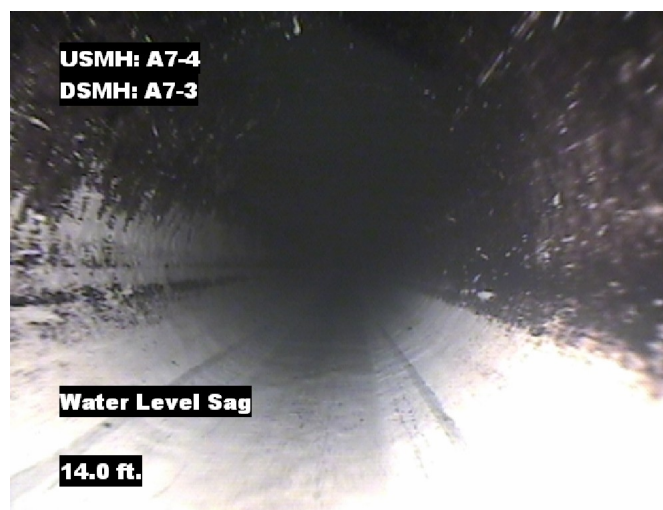
Distance: 0.0 ft. Grade: 0
Condition: Access Point Manhole
Remarks: A7-3



Distance: 0.0 ft. Grade: 0
Condition: Water Level
Remarks: N/A



Distance: 6.0 ft. Grade: 2
Condition: Water Level Sag
Remarks: N/A

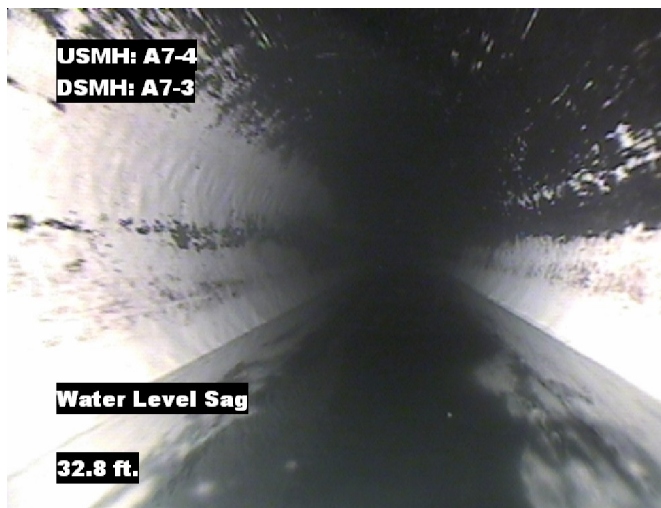


Distance: 14.0 ft. Grade: 2
Condition: Water Level Sag
Remarks: N/A

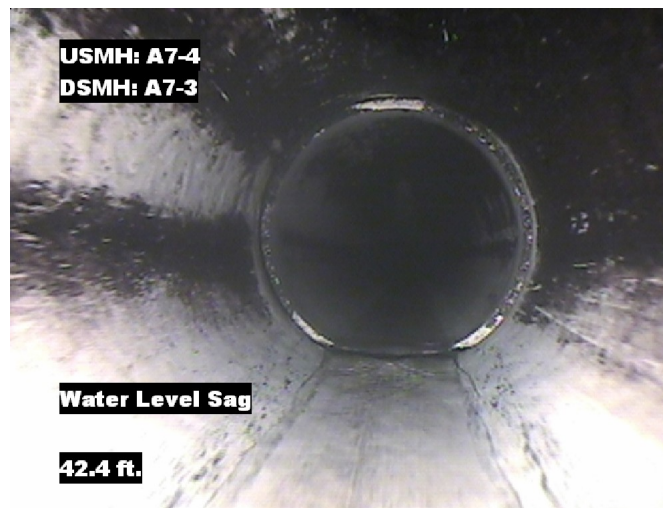


Image Report 4/Page

Pipe Segment Refere... A7-4_A7-3	City Oliver Springs	Street highway 62	Material Vitrified Clay Pipe		Location C... Easement/R...	Sewer Use Sanitary
Upstream MH A7-4	Total Length	Year Laid	Shape Circular		Location Details	
DS Manhole A7-3	Length surveyed 100.2	Year Renewed	Height 8	Width 8	Pipe Joint...	13



Distance: 32.5 ft. Grade: 2
Condition: Water Level Sag
Remarks: N/A



Distance: 41.9 ft. Grade: 2
Condition: Water Level Sag
Remarks: N/A



Distance: 68.3 ft. Grade: 2
Condition: Water Level Sag
Remarks: N/A

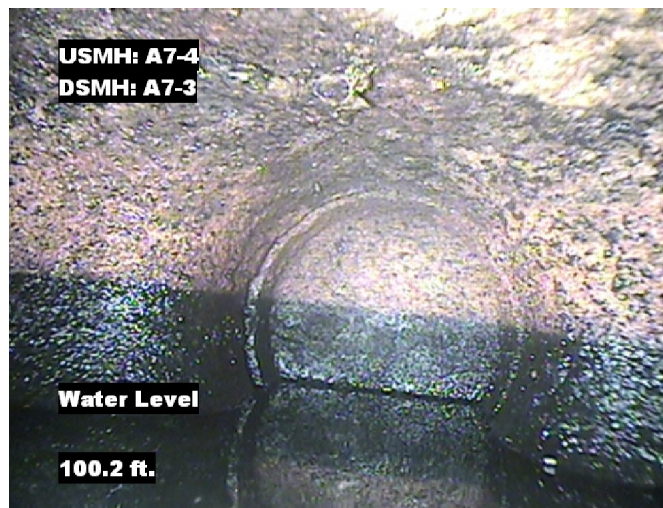


Distance: 88.6 ft. Grade: 2
Condition: Water Level Sag
Remarks: N/A

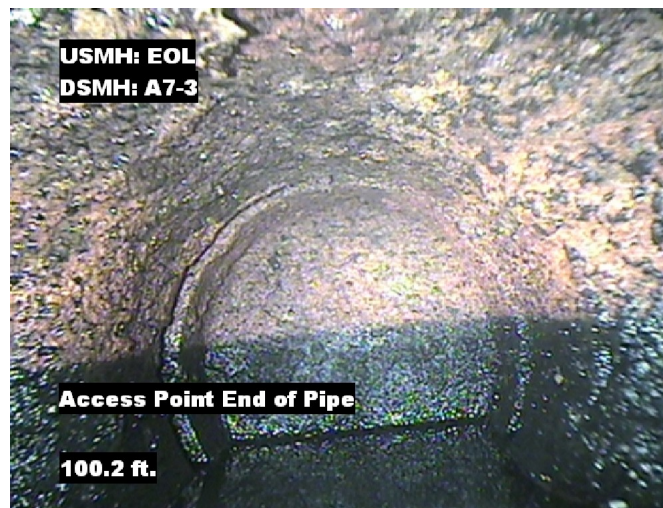


Image Report 4/Page

Pipe Segment Refere... A7-4_A7-3	City Oliver Springs	Street highway 62	Material Vitrified Clay Pipe		Location C... Easement/R...	Sewer Use Sanitary
Upstream MH A7-4	Total Length	Year Laid	Shape Circular		Location Details	
DS Manhole A7-3	Length surveyed 100.2	Year Renewed	Height 8	Width 8	Pipe Joint...	13



Distance: 100.2 ft. Grade: 0
Condition: Water Level
Remarks: N/A



Distance: 100.2 ft. Grade: 0
Condition: Access Point End of Pipe
Remarks: N/A



Distance: 100.2 ft. Grade: 0
Condition: Tap Factory Made Active
Remarks: MAIN LINE COMES IN END OF LINE



Pipe Segment Refere... A7-4_A7-3	City Oliver Springs	Street highway 62	Material Vitrified Clay Pipe		Location C... Easement/R...	Sewer Use Sanitary
Upstream MH A7-4	Total Length	Year Laid	Shape Circular		Location Details	
DS Manhole A7-3	Length surveyed 100.2	Year Renewed	Height 8	Width 8	Pipe Joint... 13	
SPR N/A	MPR 12	PO Number 4397-03		Customer GRW		
SPRI N/A	MPRI 2	Work Order 4397-02		Purpose		
QSR N/A	QMR 2600			Pre-Rehabilitation Survey		
OPR 12	Surveyed By Charlie_Gordon	Direction Upstream	Date 20150831		Media label	
OPRI 2	Certificate Number U-615-07000491	Pre-Cleaning Jetting	Time 08:13		Weather Dry	
Date Cleaned 20150831			End Time 08:32		Additional Info UPSTREAM MANHOLE A7..	

Normal Defects			Structural Ratings			O & M Ratings			Combined Ratings		
			Grade Rating	No. Occur.	Rating	Grade Rating	No. Occur.	Rating	Grade Rating	No. Occur.	Rating
Continuous Defects			1	0	0	1	0	0	1	0	0
			2	0	0	2	2	4	2	2	4
			3	0	0	3	0	0	3	0	0
			4	0	0	4	0	0	4	0	0
			5	0	0	5	0	0	5	0	0
Code	ID	Length	0	0	0	2	2	4	2	2	4
MWLS	F01	8.0									
MWLS	F02	9.4									