



Defect Listing

Pipe Segment Refere... A7-3_A7-2	City Oliver Springs	Street HIGHWAY 62	Material Concrete Pipe (non-...	Location C... Easement/R...	Sewer Use Sanitary
Upstream MH A7-3	Total Length 198.3	Year Laid	Shape Circular	Location Details	
DS Manhole A7-2	Length surveyed 198.3	Year Renewed	Height 8	Width 8	Pipe Joint... 4

SPR 2	MPR 10	PO Number 4397-03	Customer GRW
SPRI 2	MPRI 2	Work Order 4397-02	Purpose Pre-Rehabilitation Survey
QSR 2100	QMR 2500		
OPR 12	Surveyed By Charlie Gordon	Direction Upstream	Date 20150831
OPRI 2	Certificate Number U-615-07000491	Pre-Cleaning Jetting	Time 07:56
	Date Cleaned 20150831	End Time 08:09	Weather Dry
		Additional Info	

Distance	Condition	Cont. Dfct.	Values			Joint	Clock Position		Grade
			1st	2nd	%		At/From	To	
0.0 ft.	Access Point Manhole				0	<input type="checkbox"/>			
Remarks: A7-2									
0.0 ft.	Water Level				5	<input type="checkbox"/>			
11.6 ft.	Water Level Sag	S01			15	<input type="checkbox"/>			2
26.8 ft.	Water Level Sag	F01			15	<input type="checkbox"/>			2
35.1 ft.	Water Level Sag				15	<input type="checkbox"/>			2
75.7 ft.	Joint Offset Large				0	<input type="checkbox"/>			2
169.4 ft.	Water Level Sag				10	<input type="checkbox"/>			2
197.1 ft.	Water Level				5	<input type="checkbox"/>			
198.3 ft.	Access Point Manhole				0	<input type="checkbox"/>			
Remarks: A7-3									

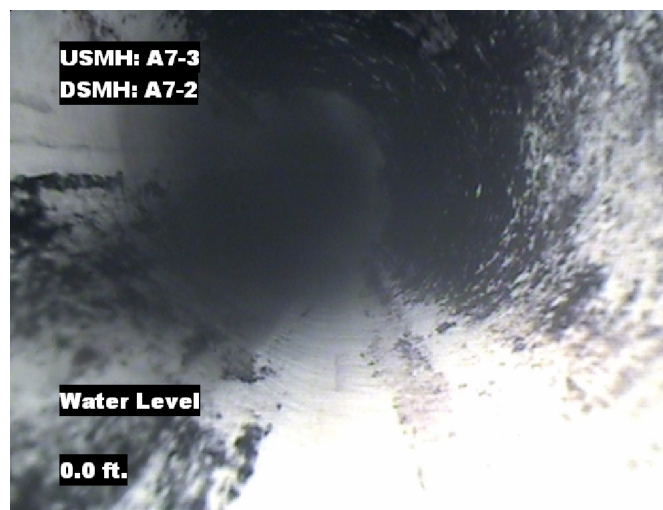


Image Report 4/Page

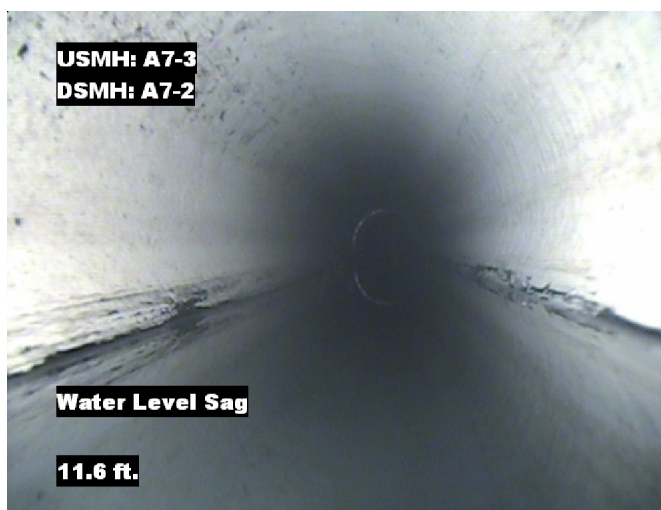
Pipe Segment Refere... A7-3_A7-2	City Oliver Springs	Street HIGHWAY 62	Material Concrete Pipe (non-...		Location C... Easement/R...	Sewer Use Sanitary
Upstream MH A7-3	Total Length 198.3	Year Laid	Shape Circular		Location Details	
DS Manhole A7-2	Length surveyed 198.3	Year Renewed	Height 8	Width 8	Pipe Joint...	4



Distance: 0.0 ft. Grade: 0
Condition: Access Point Manhole
Remarks: A7-2



Distance: 0.0 ft. Grade: 0
Condition: Water Level
Remarks: N/A



Distance: 11.6 ft. Grade: 2
Condition: Water Level Sag
Remarks: N/A



Distance: 26.8 ft. Grade: 2
Condition: Water Level Sag
Remarks: N/A

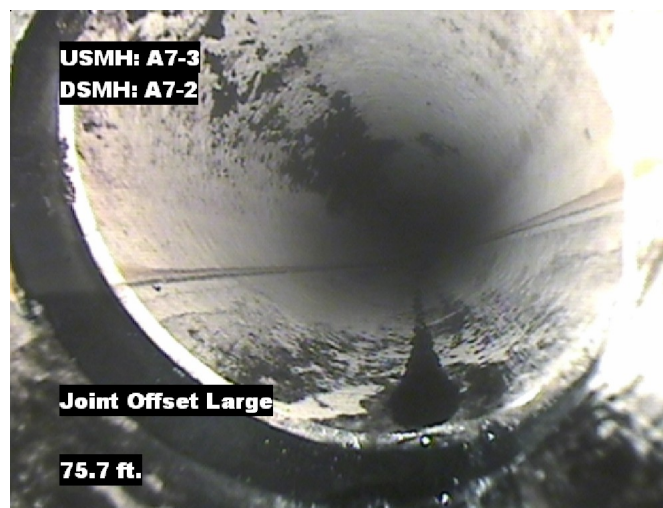


Image Report 4/Page

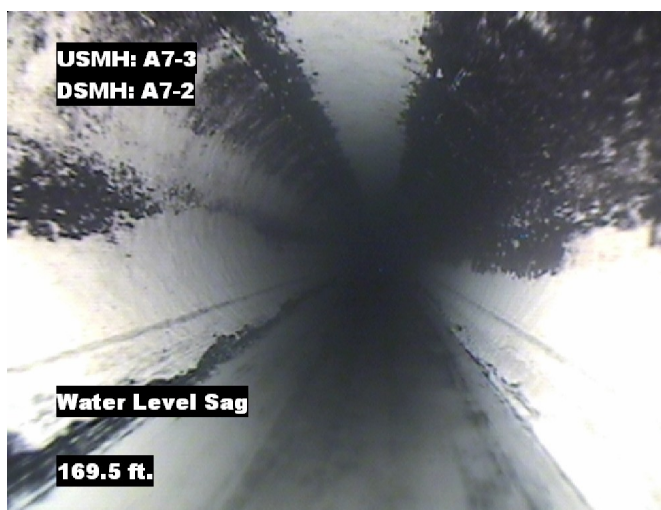
Pipe Segment Refere... A7-3_A7-2	City Oliver Springs	Street HIGHWAY 62	Material Concrete Pipe (non-...	Location C... Easement/R...	Sewer Use Sanitary
Upstream MH A7-3	Total Length 198.3	Year Laid	Shape Circular	Location Details	
DS Manhole A7-2	Length surveyed 198.3	Year Renewed	Height 8	Width 8	Pipe Joint... 4



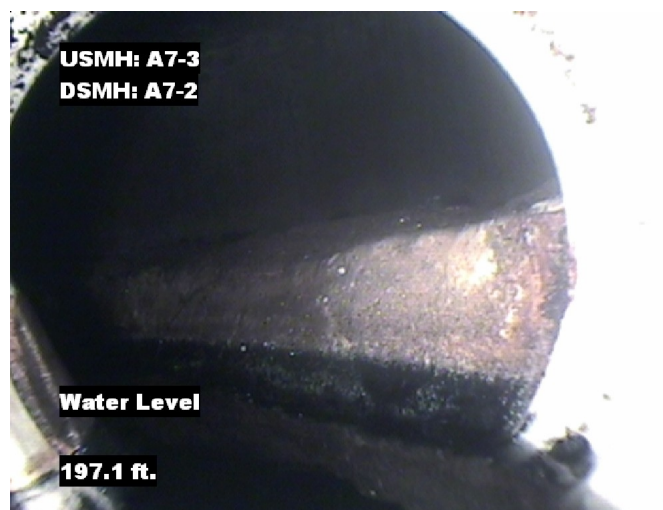
Distance: 35.1 ft. Grade: 2
Condition: Water Level Sag
Remarks: N/A



Distance: 75.7 ft. Grade: 2
Condition: Joint Offset Large
Remarks: N/A



Distance: 169.4 ft. Grade: 2
Condition: Water Level Sag
Remarks: N/A



Distance: 197.1 ft. Grade: 0
Condition: Water Level
Remarks: N/A



Image Report 4/Page

Pipe Segment Refere... A7-3_A7-2	City Oliver Springs	Street HIGHWAY 62	Material Concrete Pipe (non-...		Location C... Easement/R...	Sewer Use Sanitary
Upstream MH A7-3	Total Length 198.3	Year Laid	Shape Circular		Location Details	
DS Manhole A7-2	Length surveyed 198.3	Year Renewed	Height 8	Width 8	Pipe Joint...	4



Distance: 198.3 ft. Grade: 0
Condition: Access Point Manhole
Remarks: A7-3



PACP Conditions

Pipe Segment Refere... A7-3_A7-2	City Oliver Springs	Street HIGHWAY 62	Material Concrete Pipe (non-...	Location C... Easement/R...	Sewer Use Sanitary
Upstream MH A7-3	Total Length 198.3	Year Laid	Shape Circular	Location Details	
DS Manhole A7-2	Length surveyed 198.3	Year Renewed	Height 8	Width 8	Pipe Joint... 4
SPR 2	MPR 10	PO Number 4397-03		Customer GRW	
SPRI 2	MPRI 2	Work Order 4397-02		Purpose Pre-Rehabilitation Survey	
QSR 2100	QMR 2500				
OPR 12	Surveyed By Charlie Gordon	Direction Upstream	Date 20150831	Media label	
OPRI 2	Certificate Number U-615-07000491	Pre-Cleaning Jetting	Time 07:56	Weather Dry	
Date Cleaned 20150831			End Time 08:09	Additional Info	

Normal Defects			Structural Ratings			O & M Ratings			Combined Ratings		
			Grade Rating	No. Occur.	Rating	Grade Rating	No. Occur.	Rating	Grade Rating	No. Occur.	Rating
Continuous Defects			1	0	0	1	0	0	1	0	0
			2	1	2	2	2	4	2	3	6
			3	0	0	3	0	0	3	0	0
			4	0	0	4	0	0	4	0	0
			5	0	0	5	0	0	5	0	0
Code	ID	Length	0	0	0	2	3	6	2	3	6
MWLS	F01	15.2									
Subtotals			1			Subtotals	5		Subtotals	6	
SUMMARY			Pipe Rating	2		Pipe Rating	10		Overall Pipe Rating	12	
			Structural Index	2.0		O&M Index	2.0		Overall Index	2.0	
			Str. Quick Rating	2100		O&M Quick Rating	2500		Ovrl. Quick Rating	2600	